



2015

**MTCF**  
Michigan Traffic  
Crash Facts

# Michigan Traffic Crash Facts

## Reporting Criteria

Please pay particular attention to the wording when interpreting the three levels of data gathered for this report.

### Crash

The Crash Level analyzes data related to crash events and returns one result per crash.

Examples: Time, weather, and location.

### Units

The Units Level analyzes the experience of the units in the crash and returns one result per vehicle, driver, pedestrian, bicyclist, or train.

Examples: Vehicle type, driver condition, and unit events.

### People

The People Level analyzes the experience of the people involved in the crash and returns one result per occupant/person/party.

Examples: Age, injury severity, and seat belt or helmet use.

### **KABCO Injury Indicator:**

K = Killed

A = Incapacitating Injury

B = Non-incapacitating Injury

C = Possible Injury

O = No Injury

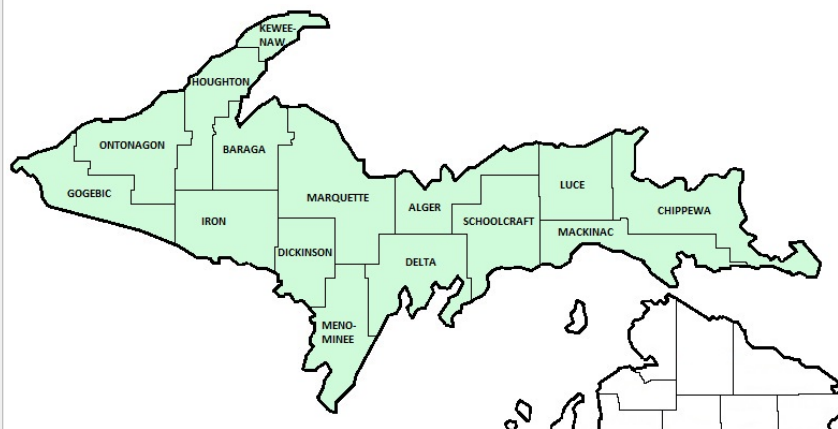
Property Damage Only (PDO)



## Michigan State Police (MSP) District 8 - Upper Peninsula

### 2015 Traffic Crash Data & 2011-2015 5-Year Trends

Beginning in 2011, District 8 is comprised of Alger, Baraga, Chippewa, Delta, Dickinson, Gogebic, Houghton, Iron, Keweenaw, Luce, Mackinac, Marquette, Menominee, Ontonagon, and Schoolcraft counties. Trend tables for this report are based on those counties.



### Sources:

The crashes in this report occurred on public roadways in Michigan and resulted in injuries, fatalities, or property damage (with \$1,000 as a reporting threshold). The information was gathered from Michigan Traffic Crash Report Forms (UD-10) submitted by local police departments, sheriff's offices, and the Michigan State Police. Other related information was obtained from the departments of Transportation, State, and Community Health.

This page left intentionally blank

## District 8 Experience

In 2015:

There were 11,662 drivers involved in 8,099 motor vehicle crashes in MSP District 8. Of those crashes, 25 were classified as fatal, resulting in 25 fatalities. An additional 1,603 persons were injured.

District 8 experienced the highest number of motor vehicle crashes (992) in January, the highest number of fatal crashes (6) and the highest number of persons killed (6) in July.

Michigan driver statistics indicate 6.0 percent of licensed drivers in District 8 were age 16-20, and 11.3 percent of drivers in crashes were also in that age group.

## 2015 - Crashes and Injuries by Month

Month	Crashes				Persons	
	Total	Fatal	Injury	Property Damage Only (PDO)	Fatalities	Injuries
January	992	2	110	880	2	158
February	952	0	133	819	0	170
March	600	0	82	518	0	105
April	525	2	67	456	2	85
May	473	1	75	397	1	94
June	579	1	102	476	1	141
July	592	6	101	485	6	142
August	568	4	127	437	4	180
September	604	1	100	503	1	142
October	703	4	94	605	4	134
November	841	2	113	726	2	149
December	670	2	83	585	2	103
<b>Total</b>	<b>8,099</b>	<b>25</b>	<b>1,187</b>	<b>6,887</b>	<b>25</b>	<b>1,603</b>

## 2015 - Driver Statistics

Age Group	Statewide			Driver Rates	
	2015 Population	Licensed Drivers	Drivers in Crashes	Per 10k Population	Per 10k Licensed
0 - 15	49,199	1,551	30	6.1	193.4
16 - 20	22,063	13,471	1,321	598.7	980.6
21 - 24	19,500	12,770	1,040	533.3	814.4
25 - 64	152,644	139,904	6,877	450.5	491.6
65 +	62,325	55,944	1,641	263.3	293.3
Unknown	--	--	753	--	--
<b>Total</b>	<b>305,731</b>	<b>223,640</b>	<b>11,662</b>	<b>381.4</b>	<b>521.5</b>

## 2015 - Vehicles in Crashes

Vehicle Type	Motor Vehicles		Fatal Crashes		Injury Crashes	PDO Crashes
	Number of Vehicles	% of Total	Number	% of Total	Number	Number
Passenger car & station wagon	7,936	68.1	23	57.5	1,197	6,716
Van & motorhome	412	3.5	1	2.5	68	343
Pickup truck	2,439	20.9	9	22.5	351	2,079
Small truck under 10,000 lbs. GVWR	203	1.7	0	0.0	34	169
Cycle	99	0.8	4	10.0	73	22
Moped	15	0.1	0	0.0	11	4
Go Cart	0	0.0	0	0.0	0	0
Snowmobile	40	0.3	0	0.0	26	14
Off-Road Vehicle (ORV) & All-Terrain Vehicle (ATV)	50	0.4	0	0.0	42	8
Other	45	0.4	0	0.0	10	35
Truck/bus over 10,000 lbs.	260	2.2	3	7.5	49	208
Unknown	163	1.4	0	0.0	5	158
<b>Total</b>	<b>11,662</b>	<b>100.0</b>	<b>40</b>	<b>100.0</b>	<b>1,866</b>	<b>9,756</b>

## MSP District 8 - Upper Peninsula (continued)

### 5-Year Trend - Crashes by Month

Month	2011		2012		2013		2014		2015	
	Total Crashes	Fatal Crashes	Total Crashes	Fatal Crashes	Total Crashes	Fatal Crashes	Total Crashes	Fatal Crashes	Total Crashes	Fatal Crashes
January	1,193	4	1,009	3	1,120	5	1,152	2	992	2
February	706	2	702	2	930	0	869	2	952	0
March	746	3	589	1	660	3	779	0	600	0
April	590	0	516	0	721	3	609	0	525	2
May	604	2	582	1	617	4	539	1	473	1
June	838	6	761	4	705	2	650	3	579	1
July	807	4	765	5	707	3	591	1	592	6
August	750	7	709	2	639	4	512	3	568	4
September	917	2	886	1	696	4	591	0	604	1
October	1,030	3	1,063	2	801	2	767	3	703	4
November	1,208	2	1,260	4	1,156	3	1,087	3	841	2
December	1,159	4	1,103	5	1,204	3	980	2	670	2
<b>Total</b>	<b>10,548</b>	<b>39</b>	<b>9,945</b>	<b>30</b>	<b>9,956</b>	<b>36</b>	<b>9,126</b>	<b>20</b>	<b>8,099</b>	<b>25</b>

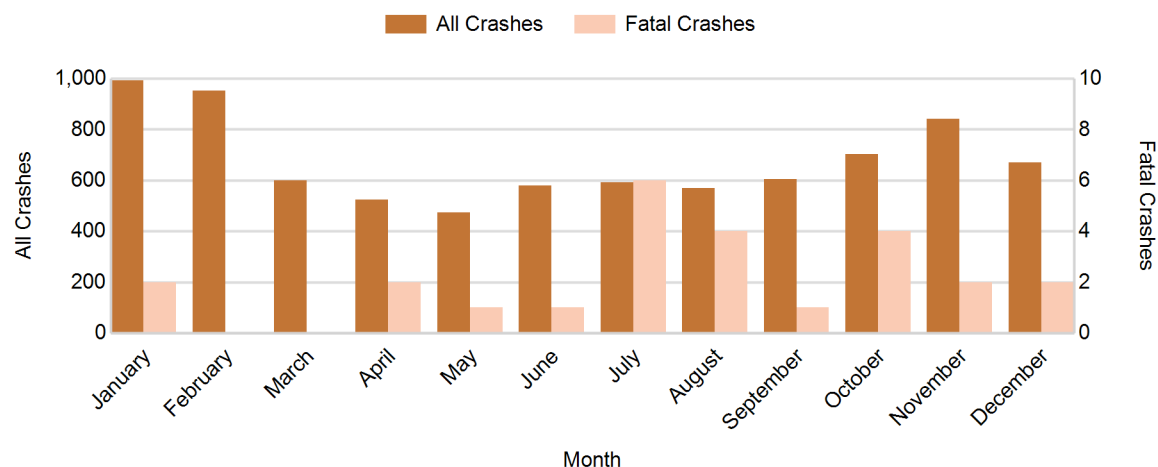
Note: † Indicates that the highest number of total crashes reported in the 5-year period occurred in the same month

### 5-Year Trend - Crashes by Day of Week

Day	2011		2012		2013		2014		2015	
	Total Crashes	Fatal Crashes	Total Crashes	Fatal Crashes	Total Crashes	Fatal Crashes	Total Crashes	Fatal Crashes	Total Crashes	Fatal Crashes
Monday	1,491	3	1,518	5	1,450	4	1,289	2	1,094	1
Tuesday	1,424	2	1,454	5	1,437	5	1,297	3	1,096	3
Wednesday	1,530	8	1,281	4	1,447	8	1,284	2	1,192	4
Thursday	1,644	6	1,463	2	1,479	4	1,367	3	1,277	2
Friday	1,663 †	6	1,645 †	4	1,634 †	1	1,588 †	1	1,362 †	5
Saturday	1,511	7	1,315	6	1,342	7	1,264	8	1,115	4
Sunday	1,285	7	1,269	4	1,167	7	1,037	1	963	6
<b>Total</b>	<b>10,548</b>	<b>39</b>	<b>9,945</b>	<b>30</b>	<b>9,956</b>	<b>36</b>	<b>9,126</b>	<b>20</b>	<b>8,099</b>	<b>25</b>

Note: † Indicates that the highest number of total crashes reported in the 5-year period occurred on the same day of the week

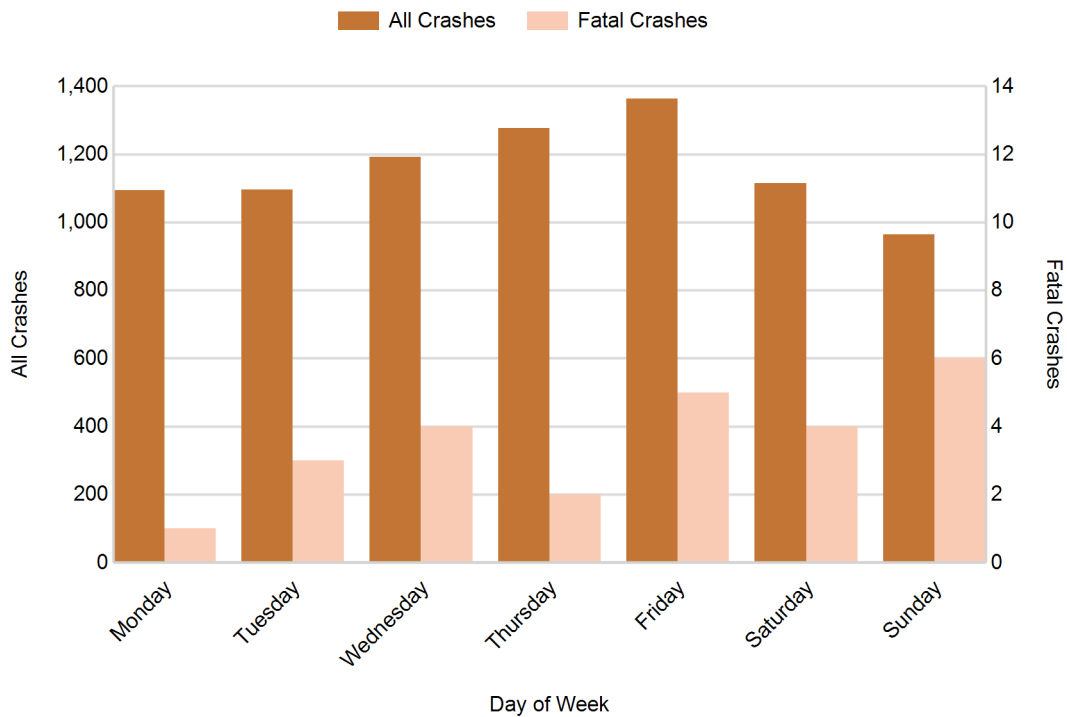
### 2015 Crashes by Month



## 2015 - Crashes by Day of Week

Day	All Crashes		Fatal Crashes		Injury Crashes			PDO Crashes
	Number	% of Total	Number	% of Fatal	A	B	C	Number
Monday	1,094	13.5	1	4.0	20	44	101	928
Tuesday	1,096	13.5	3	12.0	27	30	96	940
Wednesday	1,192	14.7	4	16.0	21	35	103	1,029
Thursday	1,277	15.8	2	8.0	18	40	117	1,100
Friday	1,362	16.8	5	20.0	34	42	115	1,166
Saturday	1,115	13.8	4	16.0	26	52	103	930
Sunday	963	11.9	6	24.0	20	43	100	794
<b>Total</b>	<b>8,099</b>	<b>100.0</b>	<b>25</b>	<b>100.0</b>	<b>166</b>	<b>286</b>	<b>735</b>	<b>6,887</b>

## 2015 Day of Week and Severity

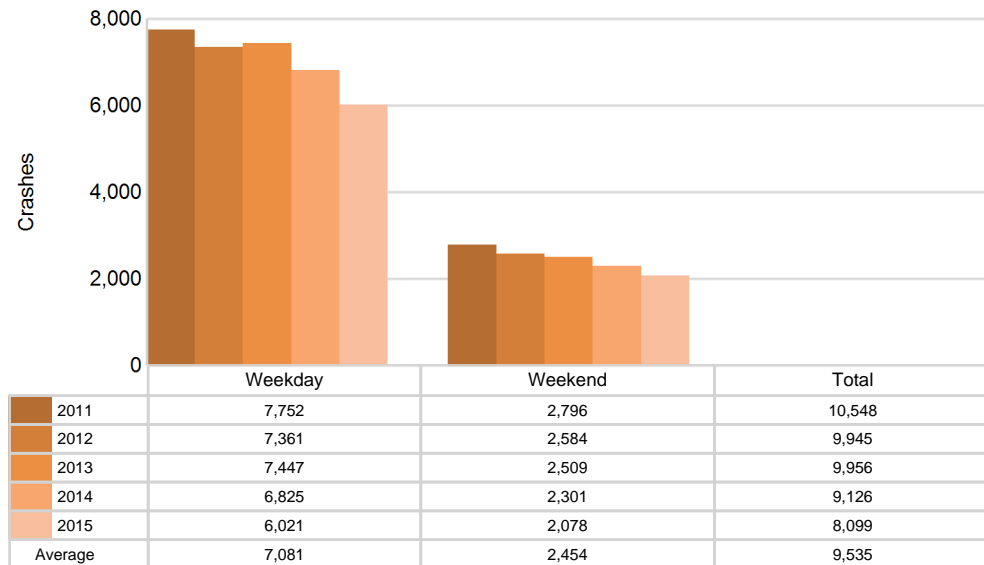


## MSP District 8 - Upper Peninsula (continued)

### 5-Year Trend - Crashes by Weekday and Weekend

Portion of Week	2011		2012		2013		2014		2015	
	Total Crashes	Fatal Crashes	Total Crashes	Fatal Crashes	Total Crashes	Fatal Crashes	Total Crashes	Fatal Crashes	Total Crashes	Fatal Crashes
Weekday	7,752	25	7,361	20	7,447	22	6,825	11	6,021	15
Weekend	2,796	14	2,584	10	2,509	14	2,301	9	2,078	10
<b>Total</b>	<b>10,548</b>	<b>39</b>	<b>9,945</b>	<b>30</b>	<b>9,956</b>	<b>36</b>	<b>9,126</b>	<b>20</b>	<b>8,099</b>	<b>25</b>

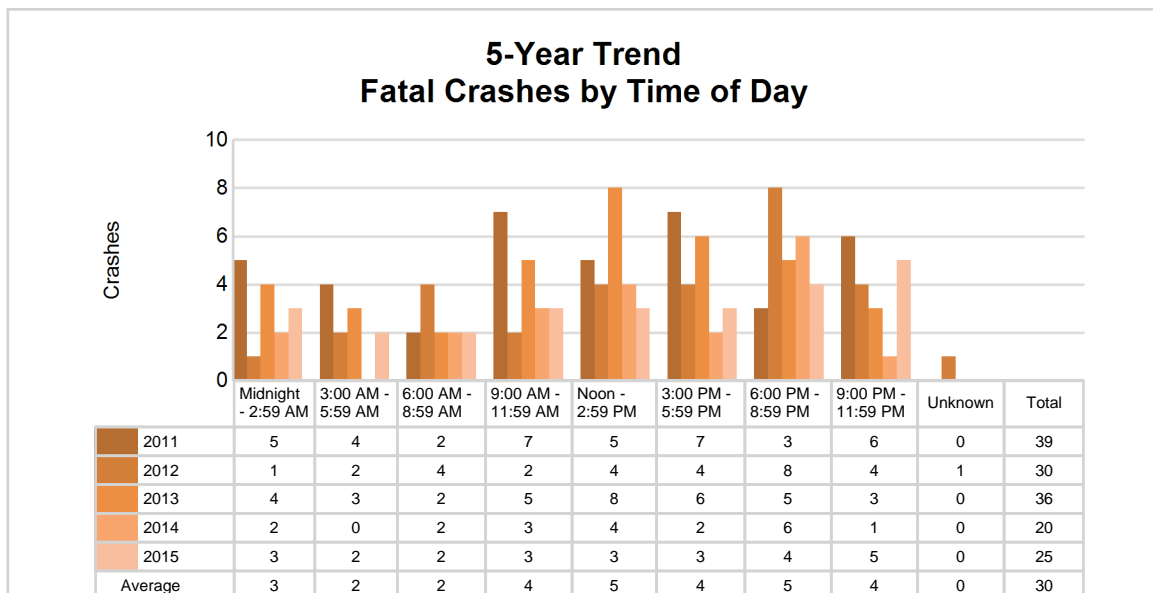
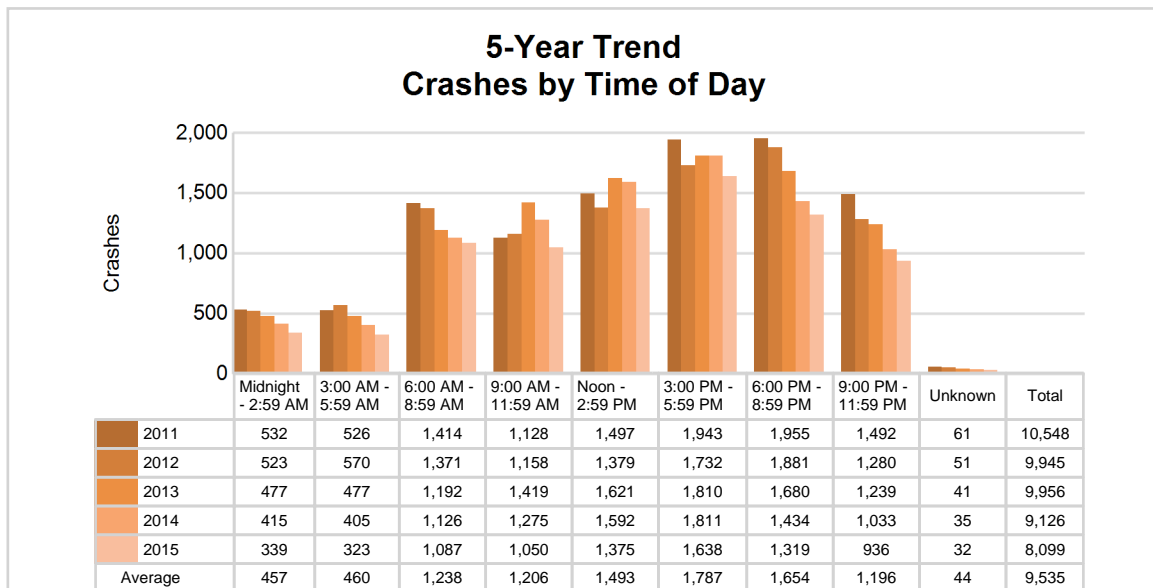
### 5-Year Crash Trends by Weekday (Monday - Friday) and Weekend (Saturday & Sunday)



## 5-Year Trend - Crashes by Time of Day

Time of Day	2011		2012		2013		2014		2015	
	Total Crashes	Fatal Crashes	Total Crashes	Fatal Crashes	Total Crashes	Fatal Crashes	Total Crashes	Fatal Crashes	Total Crashes	Fatal Crashes
Midnight - 2:59 AM	532	5	523	1	477	4	415	2	339	3
3:00 AM - 5:59 AM	526	4	570	2	477	3	405	0	323	2
6:00 AM - 8:59 AM	1,414	2	1,371	4	1,192	2	1,126	2	1,087	2
9:00 AM - 11:59 AM	1,128	7	1,158	2	1,419	5	1,275	3	1,050	3
Noon - 2:59 PM	1,497	5	1,379	4	1,621	8	1,592	4	1,375	3
3:00 PM - 5:59 PM	1,943	7	1,732	4	1,810	6	1,811	2	1,638	3
6:00 PM - 8:59 PM	1,955	3	1,881	8	1,680	5	1,434	6	1,319	4
9:00 PM - 11:59 PM	1,492	6	1,280	4	1,239	3	1,033	1	936	5
Unknown	61	0	51	1	41	0	35	0	32	0
<b>Total</b>	<b>10,548</b>	<b>39</b>	<b>9,945</b>	<b>30</b>	<b>9,956</b>	<b>36</b>	<b>9,126</b>	<b>20</b>	<b>8,099</b>	<b>25</b>

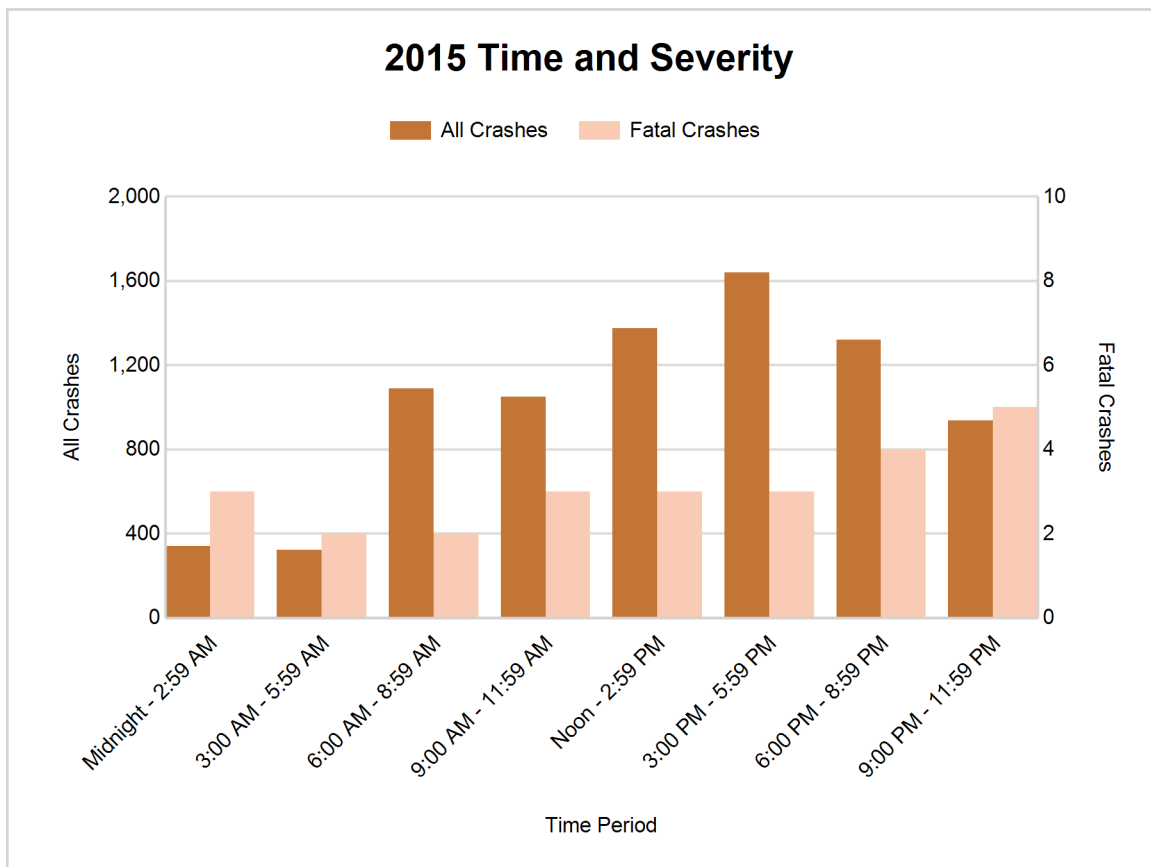
Note: † Indicates that the highest number of total crashes reported in the 5-year period occurred in the same time period



## MSP District 8 - Upper Peninsula (continued)

### 2015 - Time and Severity

Time of Day	All Crashes		Fatal Crashes		Injury Crashes			PDO Crashes
	Number	% of Total	Number	% of Fatal	A	B	C	Number
Midnight - 2:59 AM	339	4.2	3	12.0	9	20	21	286
3:00 AM - 5:59 AM	323	4.0	2	8.0	7	15	25	274
6:00 AM - 8:59 AM	1,087	13.4	2	8.0	13	36	74	962
9:00 AM - 11:59 AM	1,050	13.0	3	12.0	20	43	123	861
Noon - 2:59 PM	1,375	17.0	3	12.0	33	55	169	1,115
3:00 PM - 5:59 PM	1,638	20.2	3	12.0	42	59	182	1,352
6:00 PM - 8:59 PM	1,319	16.3	4	16.0	28	35	98	1,154
9:00 PM - 11:59 PM	936	11.6	5	20.0	14	23	41	853
Unknown	32	0.4	0	0.0	0	0	2	30
<b>Total</b>	<b>8,099</b>	<b>100.0</b>	<b>25</b>	<b>100.0</b>	<b>166</b>	<b>286</b>	<b>735</b>	<b>6,887</b>

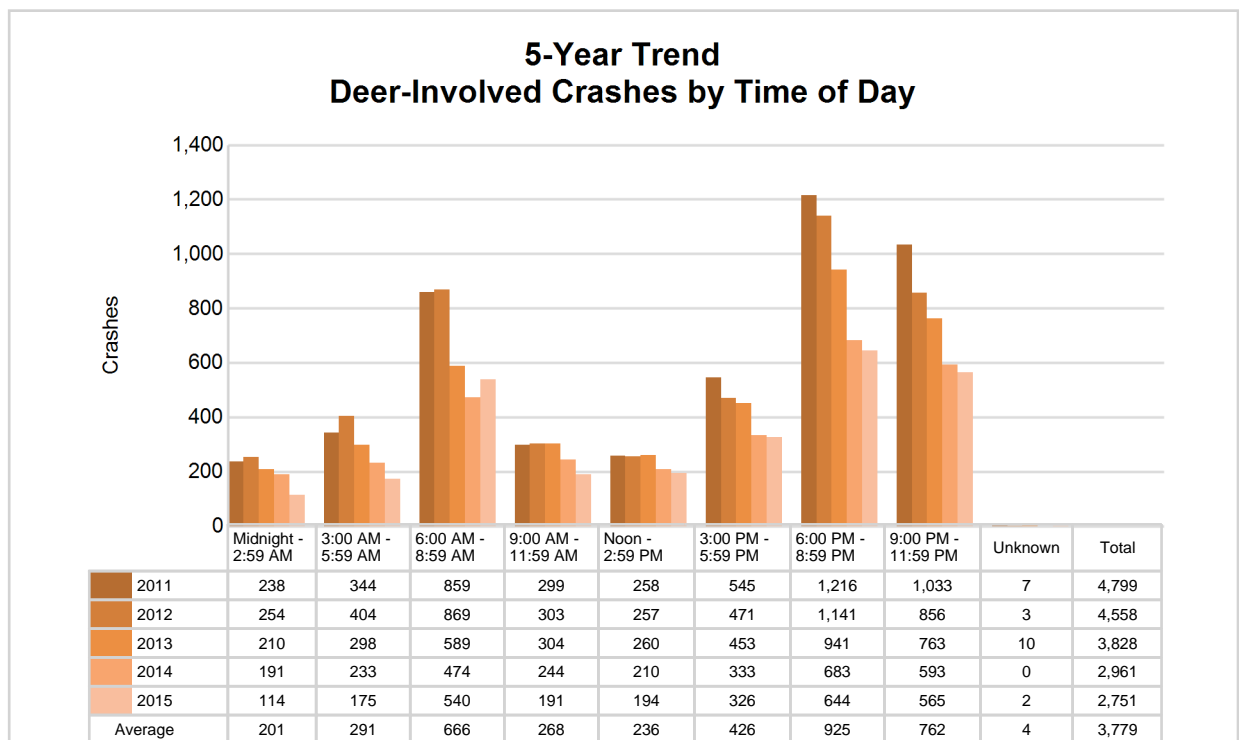




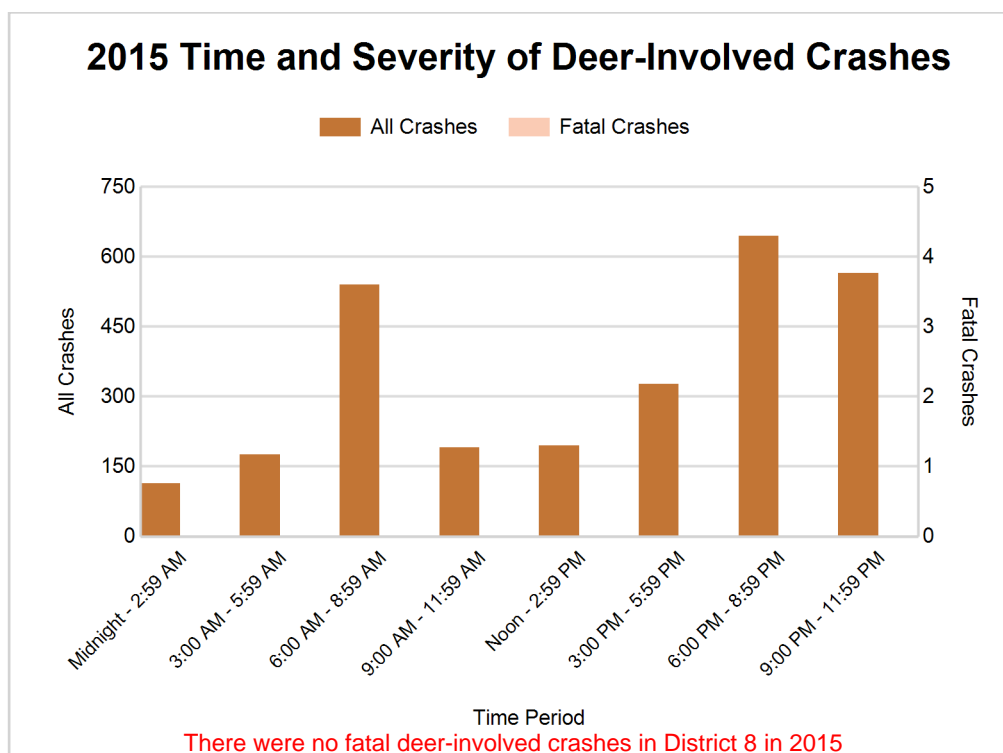
## 5-Year Trend - Deer-Involved Crashes by Time of Day

Time of Day	2011		2012		2013		2014		2015	
	Total Crashes	Fatal Crashes	Total Crashes	Fatal Crashes	Total Crashes	Fatal Crashes	Total Crashes	Fatal Crashes	Total Crashes	Fatal Crashes
Midnight - 2:59 AM	238	0	254	0	210	0	191	0	114	0
3:00 AM - 5:59 AM	344	0	404	0	298	0	233	0	175	0
6:00 AM - 8:59 AM	859	0	869	0	589	0	474	0	540	0
9:00 AM - 11:59 AM	299	0	303	0	304	0	244	0	191	0
Noon - 2:59 PM	258	0	257	0	260	0	210	0	194	0
3:00 PM - 5:59 PM	545	0	471	0	453	1	333	0	326	0
6:00 PM - 8:59 PM	1,216 †	0	1,141 †	1	941 †	1	683 †	0	644 †	0
9:00 PM - 11:59 PM	1,033	1	856	0	763	0	593	0	565	0
Unknown	7	0	3	0	10	0	0	0	2	0
<b>Total</b>	<b>4,799</b>	<b>1</b>	<b>4,558</b>	<b>1</b>	<b>3,828</b>	<b>2</b>	<b>2,961</b>	<b>0</b>	<b>2,751</b>	<b>0</b>

Note: † Indicates that the highest number of total crashes reported in the 5-year period occurred in the same time period



## MSP District 8 - Upper Peninsula (continued)



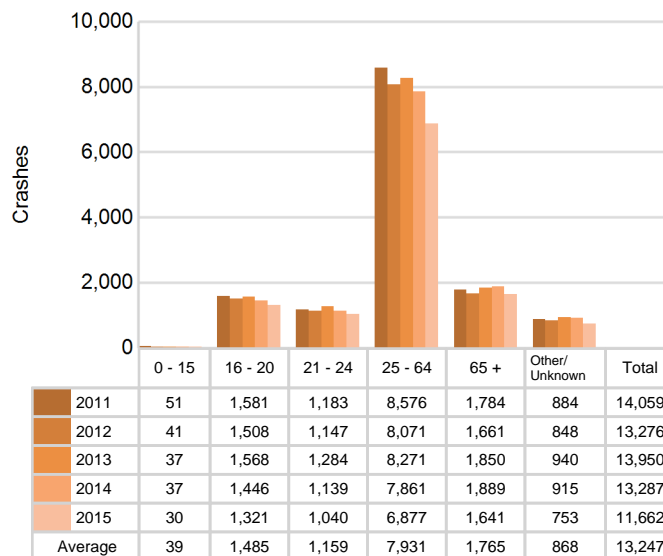
### 2015 - Reported Motor Vehicle Crashes by County

County	Crashes											Persons	
	Total	Fatal	Injury	Property Damage	Inter-state	US Route	State Route	Local Street	Alcohol-Involved	Drug-Involved	Deer-Involved	Fatalities	Injuries
Alger	248	2	33	213	0	19	132	97	6	0	78	2	44
Baraga	259	1	36	222	0	117	50	92	12	3	137	1	41
Chippewa	867	6	121	740	218	0	193	456	36	5	224	6	160
Delta	1,148	3	138	1,007	0	424	194	530	30	15	488	3	203
Dickinson	781	1	105	675	0	296	223	262	27	6	400	1	136
Gogebic	219	1	46	172	0	104	18	97	17	5	42	1	55
Houghton	836	3	130	703	0	302	227	307	29	6	146	3	165
Iron	395	0	48	347	0	171	62	162	14	2	229	0	62
Keweenaw	64	0	8	56	0	31	6	27	2	0	18	0	12
Luce	165	2	25	138	0	0	88	77	8	0	54	2	40
Mackinac	428	1	58	369	110	108	92	118	12	4	221	1	71
Marquette	1,772	2	295	1,475	0	518	271	983	70	18	295	2	422
Menominee	428	2	86	340	0	182	58	188	22	5	160	2	115
Ontonagon	253	1	31	221	0	75	113	65	7	2	140	1	42
Schoolcraft	236	0	27	209	0	84	71	81	12	5	119	0	35
<b>Total</b>	<b>8,099</b>	<b>25</b>	<b>1,187</b>	<b>6,887</b>	<b>328</b>	<b>2,431</b>	<b>1,798</b>	<b>3,542</b>	<b>304</b>	<b>76</b>	<b>2,751</b>	<b>25</b>	<b>1,603</b>

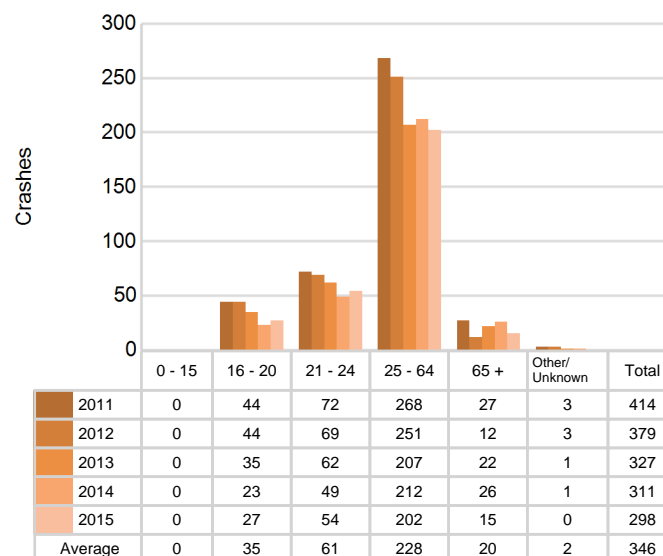
## 5-Year Trend - Drivers in Crashes Coded Drinking by Driver Age

Driver Age	2011		2012		2013		2014		2015	
	Total Drivers in Crashes	Total Drivers Coded Drinking	Total Drivers in Crashes	Total Drivers Coded Drinking	Total Drivers in Crashes	Total Drivers Coded Drinking	Total Drivers in Crashes	Total Drivers Coded Drinking	Total Drivers in Crashes	Total Drivers Coded Drinking
0 - 15	51	0	41	0	37	0	37	0	30	0
16 - 20	1,581	44	1,508	44	1,568	35	1,446	23	1,321	27
21 - 24	1,183	72	1,147	69	1,284	62	1,139	49	1,040	54
25 - 64	8,576	268	8,071	251	8,271	207	7,861	212	6,877	202
65 +	1,784	27	1,661	12	1,850	22	1,889	26	1,641	15
Unknown	884	3	848	3	940	1	915	1	753	0
<b>Total</b>	<b>14,059</b>	<b>414</b>	<b>13,276</b>	<b>379</b>	<b>13,950</b>	<b>327</b>	<b>13,287</b>	<b>311</b>	<b>11,662</b>	<b>298</b>

**5-Year Trend  
Total Drivers in Crashes by Age**



**5-Year Trend  
Total Drivers Coded Drinking by Age**



# MSP District 8 - Upper Peninsula (continued)

## 2015 - Bodily Alcohol Concentration (BAC) Results Among All Vehicle Drivers in Alcohol-Involved Crashes by Age

Age Group	Drivers				BAC Result Range for Drivers Coded Drinking				
	Total Drivers in Alcohol-Involved Crashes	Total Drivers Tested in all Crashes	Total Drivers Coded Drinking, Tested	Total Drivers Coded Drinking	BAC = 0.00	BAC 0.01 g/dL to 0.07 g/dL	BAC 0.08 g/dL to 0.16 g/dL	BAC 0.17 g/dL and Above	BAC Not Reported
0 - 15	0	0	0	0	0	0	0	0	0
16 - 20	37	32	24	27	1	4	8	8	6
21 - 24	64	54	40	54	0	6	14	13	21
25 - 64	251	235	163	202	0	20	49	59	74
65 +	21	18	11	15	0	1	3	6	5
Unknown	32	0	0	0	0	0	0	0	0
<b>Total</b>	<b>405</b>	<b>339</b>	<b>238</b>	<b>298</b>	<b>1</b>	<b>31</b>	<b>74</b>	<b>86</b>	<b>106</b>

Notes: BAC measured in grams (g) per deciliter (dL).

BAC may not be reported if drivers are not tested or if the results are not available immediately (as in the case of a blood test).

A driver may be coded by the officer as drinking even though no test is administered.

## Alcohol-Involved Crashes

In 2015, there were 405 drivers in alcohol-involved crashes; 298 (73.6%) of those drivers were coded as had-been-drinking by the officer on the crash form.

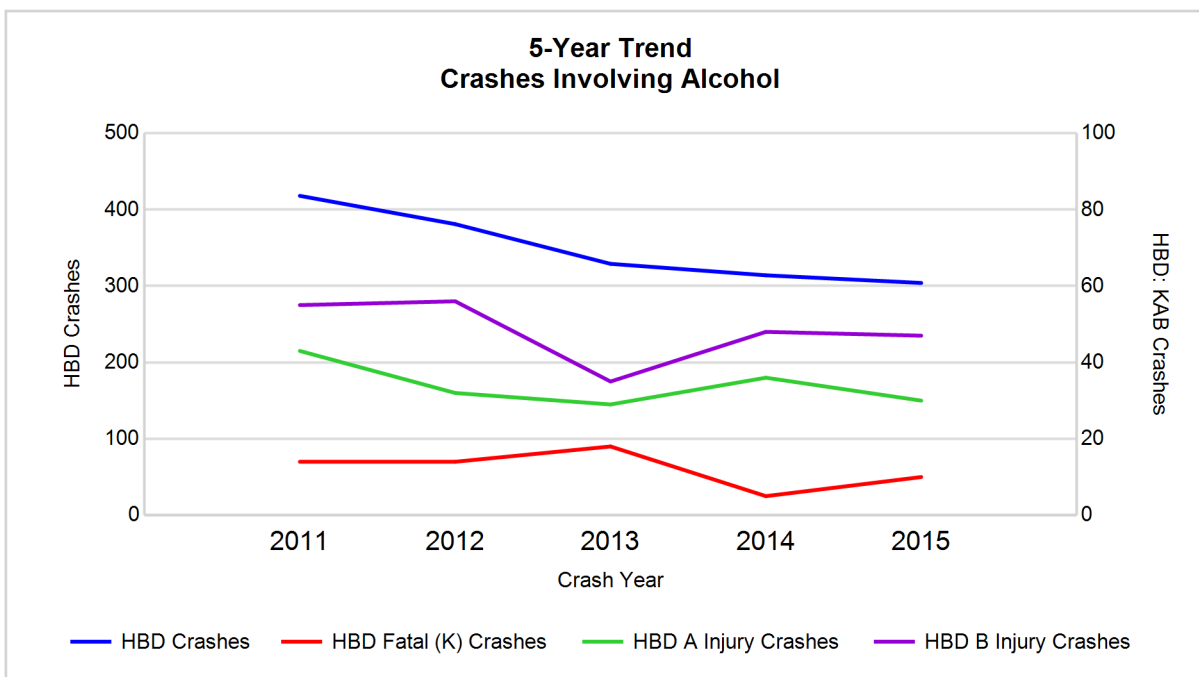
- 160 (53.7%) of the 298 drivers had a blood alcohol concentration (BAC) of 0.08 g/dL (grams per deciliter) or greater, and 86 (53.8%) of the 160 drivers had a BAC at or above 0.17 g/dL.
- 238 (79.9%) of the 298 drivers were coded as had-been-drinking and were tested for alcohol consumption.

## 5-Year Trend - Crashes Involving Alcohol

Year	All Crashes	HBD Crashes	% HBD	Fatal Crashes	HBD Fatal Crashes	% HBD	A Injury Crashes	HBD A Injury Crashes	% HBD	B Injury Crashes	HBD B Injury Crashes	% HBD
2011	10,548	418	4.0	39	14	35.9	234	43	18.4	393	55	14.0
2012	9,945	381	3.8	30	14	46.7	185	32	17.3	392	56	14.3
2013	9,956	329	3.3	36	18	50.0	168	29	17.3	323	35	10.8
2014	9,126	314	3.4	20	5	25.0	165	36	21.8	326	48	14.7
2015	8,099*	304*	3.8	25	10	40.0	166	30	18.1	286*	47	16.4**

Note: \* Indicates that the most recent year is the lowest number or percentage reported in the 5-year period in that column

\*\* Indicates that the most recent year is the highest number or percentage reported in the 5-year period in that column



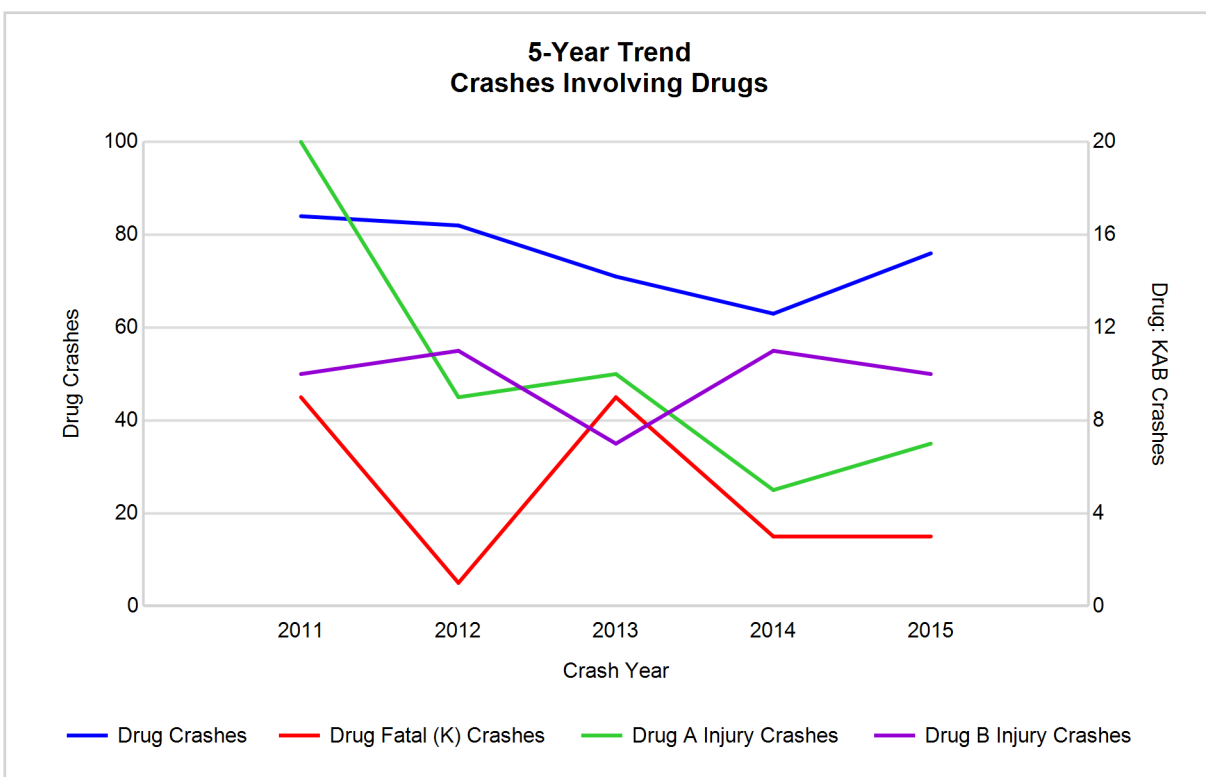
Note: Had-Been-Drinking (HBD)

## 5-Year Trend - Crashes Involving Drugs

Year	All Crashes	Drug Crashes	% Drug	Fatal Crashes	Drug Fatal Crashes	% Drug	A Injury Crashes	Drug A Injury Crashes	% Drug	B Injury Crashes	Drug B Injury Crashes	% Drug
2011	10,548	84	0.8	39	9	23.1	234	20	8.5	393	10	2.5
2012	9,945	82	0.8	30	1	3.3	185	9	4.9	392	11	2.8
2013	9,956	71	0.7	36	9	25.0	168	10	6.0	323	7	2.2
2014	9,126	63	0.7	20	3	15.0	165	5	3.0	326	11	3.4
2015	8,099*	76	0.9**	25	3	12.0	166	7	4.2	286*	10	3.5**

Note: \* Indicates that the most recent year is the lowest number or percentage reported in the 5-year period in that column

\*\* Indicates that the most recent year is the highest number or percentage reported in the 5-year period in that column



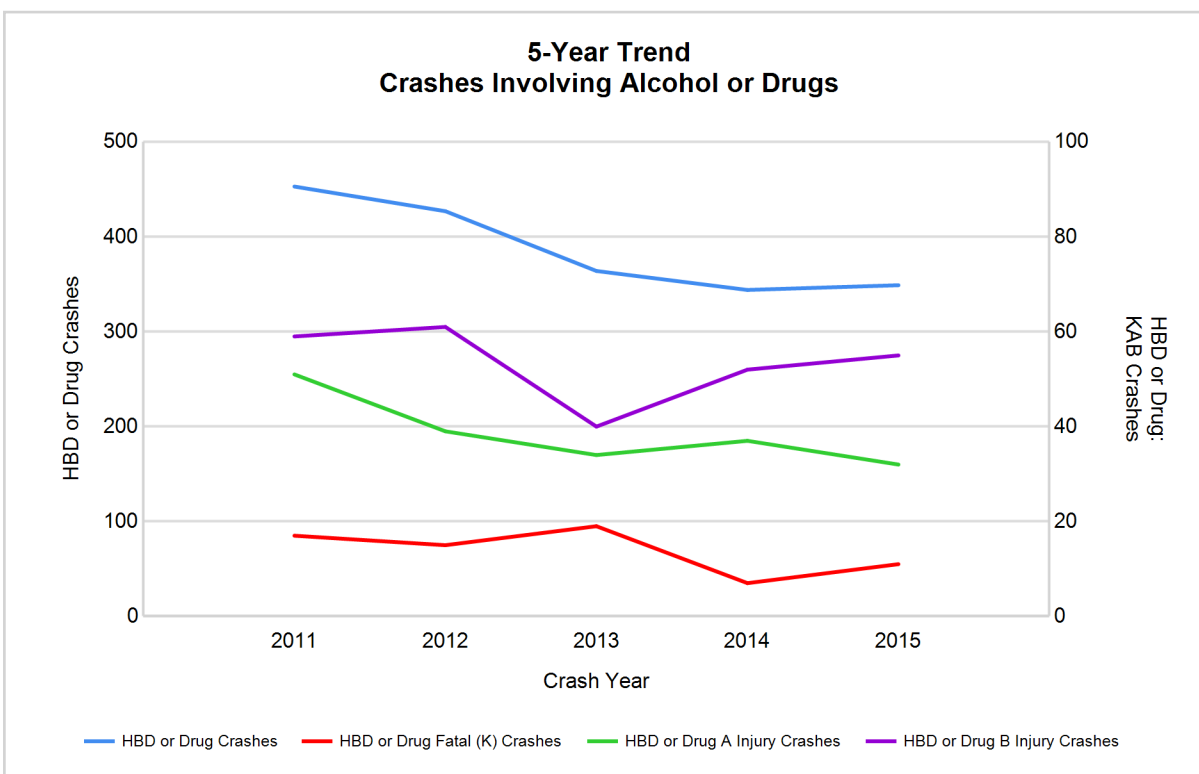
# MSP District 8 - Upper Peninsula (continued)

## 5-Year Trend - Crashes Involving Alcohol or Drugs

Year	All Crashes	HBD or Drug Crashes	% HBD or Drug	Fatal Crashes	HBD or Drug Fatal Crashes	% HBD or Drug	A Injury Crashes	HBD or Drug A Injury Crashes	% HBD or Drug	B Injury Crashes	HBD or Drug B Injury Crashes	% HBD or Drug
2011	10,548	453	4.3	39	17	43.6	234	51	21.8	393	59	15.0
2012	9,945	427	4.3	30	15	50.0	185	39	21.1	392	61	15.6
2013	9,956	364	3.7	36	19	52.8	168	34	20.2	323	40	12.4
2014	9,126	344	3.8	20	7	35.0	165	37	22.4	326	52	16.0
2015	8,099*	349	4.3	25	11	44.0	166	32*	19.3*	286*	55	19.2**

Note: \* Indicates that the most recent year is the lowest number or percentage reported in the 5-year period in that column

\*\* Indicates that the most recent year is the highest number or percentage reported in the 5-year period in that column



Note: Had-Been-Drinking (HBD)

# MSP District 8 - Upper Peninsula (continued)

13

## 2015 - Restraints Worn Among Vehicle Drivers and Injured Passengers by Vehicle Type

Vehicle Type	Total Occupants			Fatalities			A - Incapacitating			B - Non-incapacitating			C - Possible Injury			No Injury		
	Total	Used Restraint	%	Total	Used Restraint	%	Total	Used Restraint	%	Total	Used Restraint	%	Total	Used Restraint	%	Total	Used Restraint	%
Passenger car & station wagon	8,240	7,500	91.0	17	7	41.2	80	60	75.0	225	191	84.9	726	669	92.1	6,811	6,571	96.5
Van & motorhome	427	400	93.7	0	0	0.0	3	3	100.0	14	13	92.9	42	40	95.2	353	344	97.5
Pickup truck	2,502	2,234	89.3	3	1	33.3	38	23	60.5	49	35	71.4	145	132	91.0	2,148	2,040	95.0
Small truck under 10,000 lbs. GVWR	210	187	89.0	0	0	0.0	3	1	33.3	5	4	80.0	19	18	94.7	172	164	95.3
Cycle	112	75	67.0	4	2	50.0	25	17	68.0	30	19	63.3	26	18	69.2	27	19	70.4
Moped	15	5	33.3	0	0	0.0	3	1	33.3	4	1	25.0	4	2	50.0	3	1	33.3
Go Cart	0	0	0.0	0	0	0.0	0	0	0.0	0	0	0.0	0	0	0.0	0	0	0.0
Snowmobile	40	35	87.5	0	0	0.0	9	8	88.9	3	2	66.7	11	10	90.9	15	15	100.0
Off-Road Vehicle (ORV) & All-Terrain Vehicle (ATV)	58	32	55.2	0	0	0.0	15	10	66.7	17	8	47.1	15	9	60.0	9	5	55.6
Other	47	21	44.7	0	0	0.0	3	0	0.0	0	0	0.0	2	1	50.0	39	20	51.3
Truck/bus over 10,000 lbs.	267	238	89.1	0	0	0.0	4	2	50.0	1	1	100.0	17	13	76.5	237	222	93.7
Unknown	163	1	0.6	0	0	0.0	0	0	0.0	0	0	0.0	0	0	0.0	3	1	33.3
<b>Total</b>	<b>12,081</b>	<b>10,728</b>	<b>88.8</b>	<b>24</b>	<b>10</b>	<b>41.7</b>	<b>183</b>	<b>125</b>	<b>68.3</b>	<b>348</b>	<b>274</b>	<b>78.7</b>	<b>1,007</b>	<b>912</b>	<b>90.6</b>	<b>9,817</b>	<b>9,402</b>	<b>95.8</b>

Note: Restraint Use includes shoulder belt only used, lap belt only used, both lap and shoulder belts used, child restraint used, restraint failure, and helmet worn.

## 2015 - Restraints Worn Among Vehicle Drivers and Injured Passengers by Age

Age Group	Total Occupants			Fatalities			A - Incapacitating			B - Non-incapacitating			C - Possible Injury			No Injury		
	Total	Used Restraint	%	Total	Used Restraint	%	Total	Used Restraint	%	Total	Used Restraint	%	Total	Used Restraint	%	Total	Used Restraint	%
0 - 15	102	85	83.3	0	0	0.0	11	7	63.6	29	21	72.4	47	43	91.5	15	14	93.3
16 - 20	1,386	1,316	94.9	4	1	25.0	34	24	70.6	46	35	76.1	133	122	91.7	1,169	1,134	97.0
21 - 24	1,084	1,021	94.2	0	0	0.0	16	10	62.5	33	27	81.8	91	77	84.6	942	906	96.2
25 - 64	7,058	6,690	94.8	14	7	50.0	97	64	66.0	197	154	78.2	572	521	91.1	6,168	5,942	96.3
65 +	1,695	1,610	95.0	6	2	33.3	25	20	80.0	43	37	86.0	161	146	90.7	1,457	1,404	96.4
Unknown	756	6	0.8	0	0	0.0	0	0	0.0	0	0	0.0	3	3	100.0	66	2	3.0
<b>Total</b>	<b>12,081</b>	<b>10,728</b>	<b>88.8</b>	<b>24</b>	<b>10</b>	<b>41.7</b>	<b>183</b>	<b>125</b>	<b>68.3</b>	<b>348</b>	<b>274</b>	<b>78.7</b>	<b>1,007</b>	<b>912</b>	<b>90.6</b>	<b>9,817</b>	<b>9,402</b>	<b>95.8</b>

Note: Restraint Use includes shoulder belt only used, lap belt only used, both lap and shoulder belts used, child restraint used, restraint failure, and helmet worn.

## MSP District 8 - Upper Peninsula (continued)

## 5-Year Trend - Restraint Use Among Drivers

Restraint Use	2011			2012			2013			2014			2015		
	Drivers	Fatal Drivers	Injured Drivers	Drivers	Fatal Drivers	Injured Drivers	Drivers	Fatal Drivers	Injured Drivers	Drivers	Fatal Drivers	Injured Drivers	Drivers	Fatal Drivers	Injured Drivers
No belts available	151	0	15	181	0	18	129	1	13	80	0	9	96	0	17
Shoulder belt only used	34	0	7	46	0	3	37	1	8	55	0	4	43	0	6
Lap belt only used	31	0	4	37	0	6	52	0	3	62	1	6	33	0	3
Both lap & shoulder belts used	12,225	11	1,065	11,462	7	948	12,118	10	1,015	11,515	7	967	10,176	6	876
No belts used	160	7	77	116	5	53	118	9	41	112	4	39	97	8	39
Child restraint used	0	0	0	0	0	0	0	0	0	0	0	0	0	0	0
Child restraint not used, unavailable or improper use	5	0	0	0	0	0	1	0	0	0	0	0	0	0	0
Restraint failure	12	0	0	10	0	0	10	0	0	6	0	0	8	0	0
Restraint use unknown	326	2	40	302	0	46	298	2	26	300	0	39	257	2	45
Helmet worn	189	9	134	216	2	168	170	4	113	194	1	130	131	2	91
Helmet not worn	17	1	14	58	6	42	60	4	42	39	2	29	50	2	39
Helmet use unknown	7	1	3	11	0	4	12	0	9	12	0	7	9	0	6
Uncoded & errors	902	0	3	837	0	2	945	0	2	912	0	3	762	0	1
<b>Total</b>	<b>14,059</b>	<b>31</b>	<b>1,362</b>	<b>13,276</b>	<b>20</b>	<b>1,290</b>	<b>13,950</b>	<b>31</b>	<b>1,272</b>	<b>13,287</b>	<b>15</b>	<b>1,233</b>	<b>11,662</b>	<b>20</b>	<b>1,123</b>

## 5-Year Trend - Restraint Use Among Drivers Coded Drinking

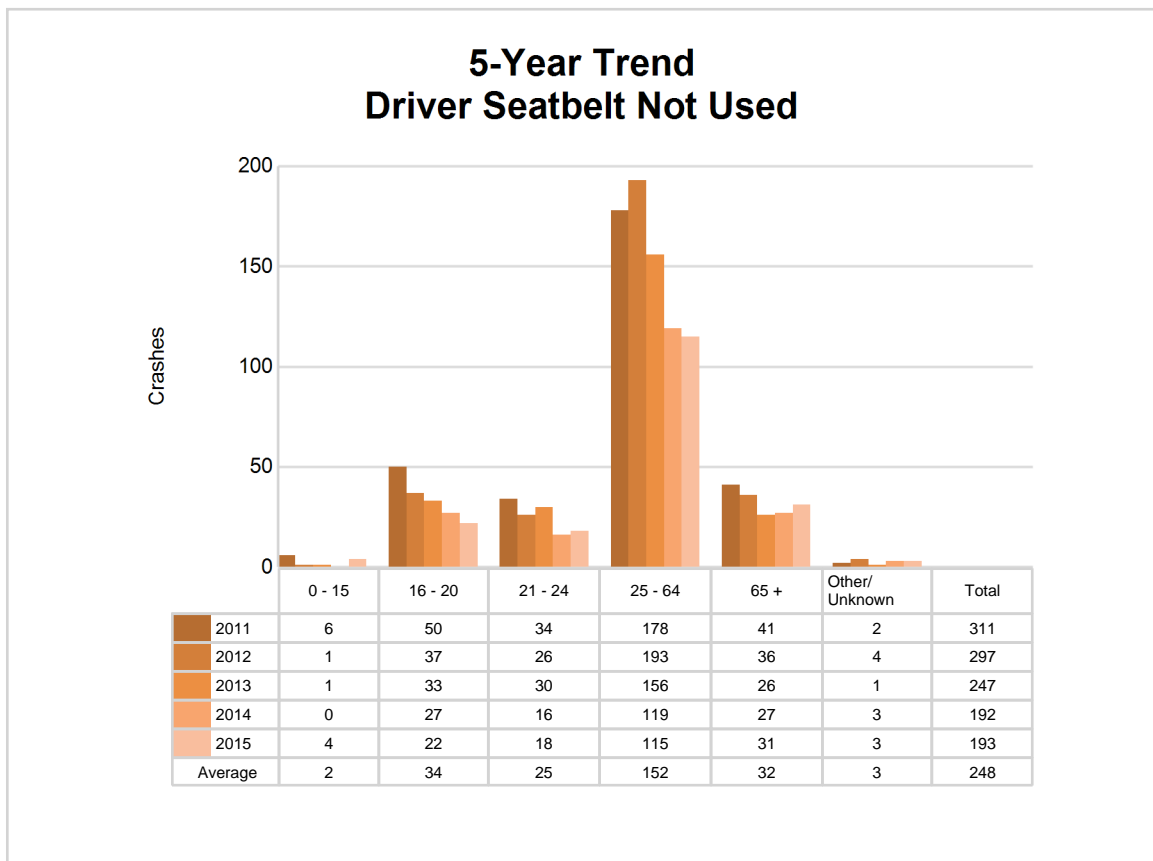
Restraint Use	2011			2012			2013			2014			2015		
	Drivers	Fatal Drivers	Injured Drivers	Drivers	Fatal Drivers	Injured Drivers	Drivers	Fatal Drivers	Injured Drivers	Drivers	Fatal Drivers	Injured Drivers	Drivers	Fatal Drivers	Injured Drivers
No belts available	3	0	1	6	0	1	3	1	0	1	0	1	3	0	1
Shoulder belt only used	1	0	0	1	0	0	3	0	1	1	0	0	1	0	1
Lap belt only used	1	0	1	1	0	1	2	0	0	0	0	0	1	0	1
Both lap & shoulder belts used	283	2	84	244	2	61	206	3	50	204	0	57	198	1	51
No belts used	43	3	30	27	3	19	27	6	13	26	2	16	19	4	12
Child restraint used	0	0	0	0	0	0	0	0	0	0	0	0	0	0	0
Child restraint not used, unavailable or improper use	0	0	0	0	0	0	0	0	0	0	0	0	0	0	0
Restraint failure	0	0	0	1	0	0	1	0	0	0	0	0	1	0	0
Restraint use unknown	59	0	16	68	0	17	61	1	11	56	0	16	56	0	17
Helmet worn	10	4	5	17	1	15	9	2	2	13	1	9	9	1	7
Helmet not worn	7	0	6	10	2	8	11	2	9	7	0	6	8	1	6
Helmet use unknown	3	1	2	1	0	0	2	0	2	2	0	2	2	0	2
Uncoded & errors	4	0	1	3	0	0	2	0	0	1	0	0	0	0	0
<b>Total</b>	<b>414</b>	<b>10</b>	<b>146</b>	<b>379</b>	<b>8</b>	<b>122</b>	<b>327</b>	<b>15</b>	<b>88</b>	<b>311</b>	<b>3</b>	<b>107</b>	<b>298</b>	<b>7</b>	<b>98</b>



## 5-Year Trend - Seatbelt Not Used Among Drivers by Age

Age Group	2011			2012			2013			2014			2015		
	Drivers	Fatal Drivers	Injured Drivers	Drivers	Fatal Drivers	Injured Drivers	Drivers	Fatal Drivers	Injured Drivers	Drivers	Fatal Drivers	Injured Drivers	Drivers	Fatal Drivers	Injured Drivers
0 - 15	6	0	2	1	0	1	1	0	1	0	0	0	4	0	3
16 - 20	50	0	20	37	0	10	33	0	9	27	0	10	22	2	8
21 - 24	34	1	8	26	0	11	30	2	6	16	1	7	18	0	5
25 - 64	178	4	49	193	4	43	156	8	29	119	3	27	115	4	31
65 +	41	2	13	36	1	6	26	0	9	27	0	4	31	2	9
Unknown	2	0	0	4	0	0	1	0	0	3	0	0	3	0	0
<b>Total</b>	<b>311</b>	<b>7</b>	<b>92</b>	<b>297</b>	<b>5</b>	<b>71</b>	<b>247</b>	<b>10</b>	<b>54</b>	<b>192</b>	<b>4</b>	<b>48</b>	<b>193</b>	<b>8</b>	<b>56</b>

Note: Seatbelt Not Used includes no belts available or no belts used.



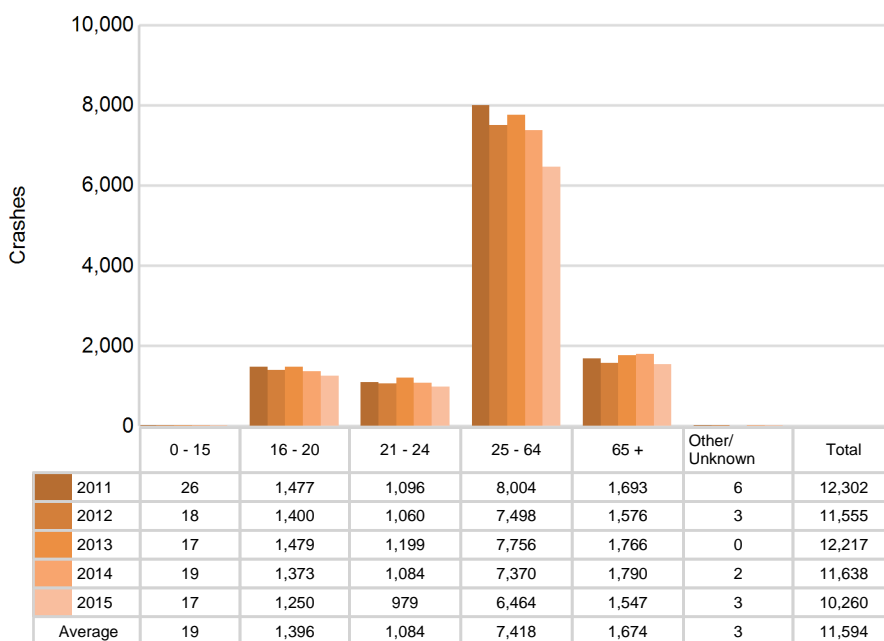
## MSP District 8 - Upper Peninsula (continued)

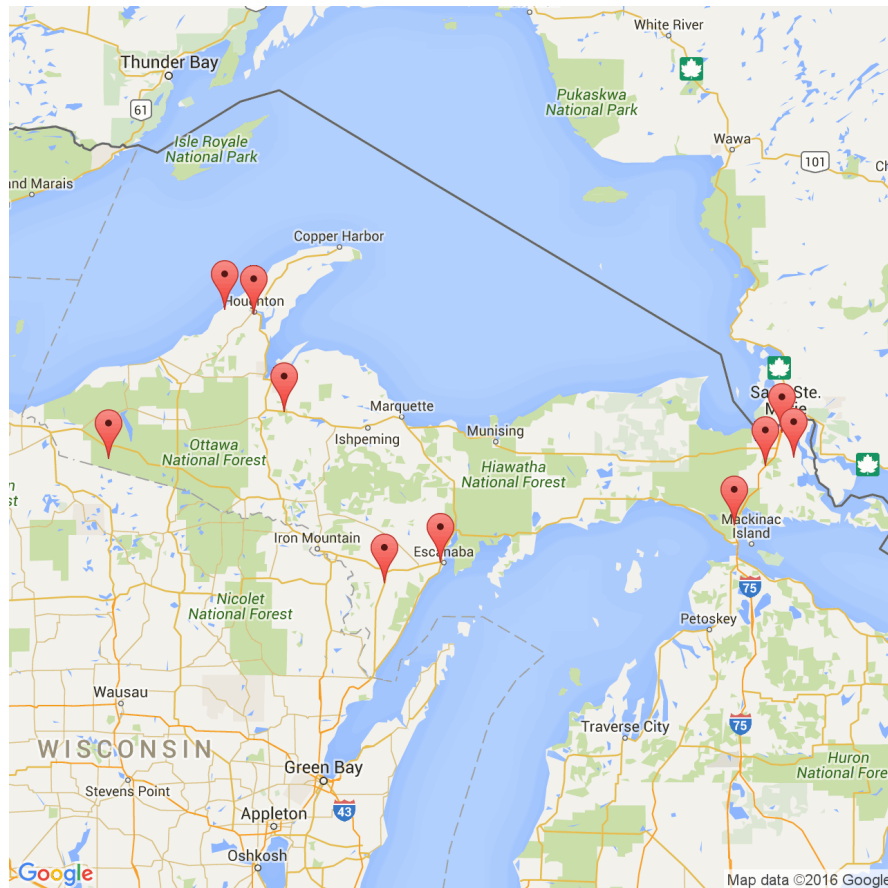
### 5-Year Trend - Seatbelt Used Among Drivers by Age

Age Group	2011			2012			2013			2014			2015		
	Drivers	Fatal Drivers	Injured Drivers	Drivers	Fatal Drivers	Injured Drivers	Drivers	Fatal Drivers	Injured Drivers	Drivers	Fatal Drivers	Injured Drivers	Drivers	Fatal Drivers	Injured Drivers
0 - 15	26	0	1	18	0	2	17	0	3	19	0	2	17	0	3
16 - 20	1,477	0	157	1,400	0	148	1,479	4	134	1,373	1	130	1,250	1	119
21 - 24	1,096	1	132	1,060	0	85	1,199	0	108	1,084	0	101	979	0	76
25 - 64	8,004	8	631	7,498	5	573	7,756	1	616	7,370	4	600	6,464	3	543
65 +	1,693	2	155	1,576	2	149	1,766	6	165	1,790	3	144	1,547	2	144
Unknown	6	0	0	3	0	0	0	0	0	2	0	0	3	0	0
<b>Total</b>	<b>12,302</b>	<b>11</b>	<b>1,076</b>	<b>11,555</b>	<b>7</b>	<b>957</b>	<b>12,217</b>	<b>11</b>	<b>1,026</b>	<b>11,638</b>	<b>8</b>	<b>977</b>	<b>10,260</b>	<b>6</b>	<b>885</b>

Note: Seatbelt Used includes shoulder belt only used, lap belt only used, both lap and shoulder belts used, and restraint failure.

### 5-Year Trend Driver Seatbelt Used





The picture above represents all 2015 alcohol-involved fatal crashes in District 8.

In 2015, there were 304 alcohol-involved crashes in District 8:

- 10 K - Fatal Crashes
- 30 A - Incapacitating Injury Crashes
- 47 B - Non-incapacitating Injury Crashes
- 42 C - Possible Injury Crashes
- 175 O - Property Damage Only/No Injury Crashes

### Office of Highway Safety Planning

Physical Address:  
7150 Harris Drive  
Dimondale, Michigan 48821

Mailing Address:  
P.O. Box 30634  
Lansing, Michigan 48909

Phone: (517) 284-3140  
Fax: (517) 284-3151

Find us on the web:  
[MichiganTrafficCrashFacts.org](http://MichiganTrafficCrashFacts.org)

