



2015

**MTCF**  
Michigan Traffic  
Crash Facts

# Michigan Traffic Crash Facts

## Reporting Criteria

Please pay particular attention to the wording when interpreting the three levels of data gathered for this report.

### Crash

The Crash Level analyzes data related to crash events and returns one result per crash.

Examples: Time, weather, and location.

### Units

The Units Level analyzes the experience of the units in the crash and returns one result per vehicle, driver, pedestrian, bicyclist, or train.

Examples: Vehicle type, driver condition, and unit events.

### People

The People Level analyzes the experience of the people involved in the crash and returns one result per occupant/person/party.

Examples: Age, injury severity, and seat belt or helmet use.

### **KABCO Injury Indicator:**

K = Killed

A = Incapacitating Injury

B = Non-incapacitating Injury

C = Possible Injury

O = No Injury

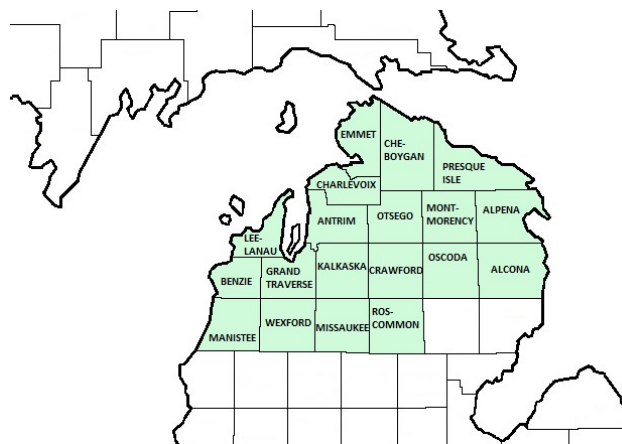
Property Damage Only (PDO)



## Michigan State Police (MSP) District 7 - Northern Lower Peninsula

### 2015 Traffic Crash Data & 2011-2015 5-Year Trends

Beginning in 2011, District 7 is comprised of Alcona, Alpena, Antrim, Benzie, Charlevoix, Cheboygan, Crawford, Emmet, Grand Traverse, Kalkaska, Leelanau, Manistee, Missaukee, Montmorency, Oscoda, Otsego, Presque Isle, Roscommon, and Wexford counties. Trend tables for this report are based on those counties.



### Sources:

The crashes in this report occurred on public roadways in Michigan and resulted in injuries, fatalities, or property damage (with \$1,000 as a reporting threshold). The information was gathered from Michigan Traffic Crash Report Forms (UD-10) submitted by local police departments, sheriff's offices, and the Michigan State Police. Other related information was obtained from the departments of Transportation, State, and Community Health.

This page left intentionally blank

## District 7 Experience

In 2015:

There were 22,840 drivers involved in 16,435 motor vehicle crashes in MSP District 7. Of those crashes, 56 were classified as fatal, resulting in 61 fatalities. An additional 3,000 persons were injured.

District 7 experienced the highest number of motor vehicle crashes (1,992) in November, the highest number of fatal crashes (8) in July and August, and the highest number of persons killed (9) in August.

Michigan driver statistics indicate 5.7 percent of licensed drivers in District 7 were age 16-20, and 11.0 percent of drivers in crashes were also in that age group.

## 2015 - Crashes and Injuries by Month

Month	Crashes				Persons	
	Total	Fatal	Injury	Property Damage Only (PDO)	Fatalities	Injuries
January	1,712	5	189	1,518	6	257
February	1,440	4	158	1,278	5	226
March	1,050	2	125	923	2	165
April	989	2	107	880	2	132
May	1,081	5	184	892	6	246
June	1,477	3	179	1,295	3	228
July	1,389	8	262	1,119	8	368
August	1,274	8	247	1,019	9	360
September	1,163	7	187	969	8	266
October	1,533	1	180	1,352	1	248
November	1,992	7	185	1,800	7	273
December	1,335	4	166	1,165	4	231
<b>Total</b>	<b>16,435</b>	<b>56</b>	<b>2,169</b>	<b>14,210</b>	<b>61</b>	<b>3,000</b>

## 2015 - Driver Statistics

Age Group	Statewide			Driver Rates	
	2015 Population	Licensed Drivers	Drivers in Crashes	Per 10k Population	Per 10k Licensed
0 - 15	77,679	2,606	41	5.3	157.3
16 - 20	24,806	20,846	2,507	1,010.6	1,202.6
21 - 24	19,353	19,411	1,803	931.6	928.9
25 - 64	234,289	226,237	14,380	613.8	635.6
65 +	104,009	99,017	3,241	311.6	327.3
Unknown	--	--	868	--	--
<b>Total</b>	<b>460,136</b>	<b>368,117</b>	<b>22,840</b>	<b>496.4</b>	<b>620.5</b>

## 2015 - Vehicles in Crashes

Vehicle Type	Motor Vehicles		Fatal Crashes		Injury Crashes	PDO Crashes
	Number of Vehicles	% of Total	Number	% of Total	Number	Number
Passenger car & station wagon	16,206	71.0	48	57.8	2,352	13,806
Van & motorhome	806	3.5	2	2.4	110	694
Pickup truck	4,331	19.0	13	15.7	595	3,723
Small truck under 10,000 lbs. GVWR	416	1.8	0	0.0	54	362
Cycle	182	0.8	6	7.2	125	51
Moped	20	0.1	0	0.0	17	3
Go Cart	1	0.0	0	0.0	1	0
Snowmobile	47	0.2	1	1.2	31	15
Off-Road Vehicle (ORV) & All-Terrain Vehicle (ATV)	68	0.3	3	3.6	59	6
Other	84	0.4	1	1.2	16	67
Truck/bus over 10,000 lbs.	445	1.9	9	10.8	62	374
Unknown	234	1.0	0	0.0	17	217
<b>Total</b>	<b>22,840</b>	<b>100.0</b>	<b>83</b>	<b>100.0</b>	<b>3,439</b>	<b>19,318</b>

## MSP District 7 - Northern Lower Peninsula (continued)

### 5-Year Trend - Crashes by Month

Month	2011		2012		2013		2014		2015	
	Total Crashes	Fatal Crashes	Total Crashes	Fatal Crashes	Total Crashes	Fatal Crashes	Total Crashes	Fatal Crashes	Total Crashes	Fatal Crashes
January	1,774	8	1,726	4	1,718	5	2,027	3	1,712	5
February	1,154	5	1,368	4	1,365	8	1,481	3	1,440	4
March	1,192	5	945	2	1,162	2	1,488	1	1,050	2
April	1,003	3	799	2	1,147	3	1,089	4	989	2
May	980	5	1,008	5	1,049	3	1,073	4	1,081	5
June	1,401	6	1,304	5	1,349	6	1,310	4	1,477	3
July	1,326	5	1,260	7	1,290	7	1,267	5	1,389	8
August	1,112	1	1,158	5	1,226	9	1,178	5	1,274	8
September	1,268	4	1,252	2	1,248	12	1,098	9	1,163	7
October	1,628	2	1,650	2	1,553	3	1,520	3	1,533	1
November	1,914 †	3	2,032 †	6	2,303 †	8	2,387 †	4	1,992 †	7
December	1,826	8	1,622	5	2,145	4	1,667	4	1,335	4
<b>Total</b>	<b>16,578</b>	<b>55</b>	<b>16,124</b>	<b>49</b>	<b>17,555</b>	<b>70</b>	<b>17,585</b>	<b>49</b>	<b>16,435</b>	<b>56</b>

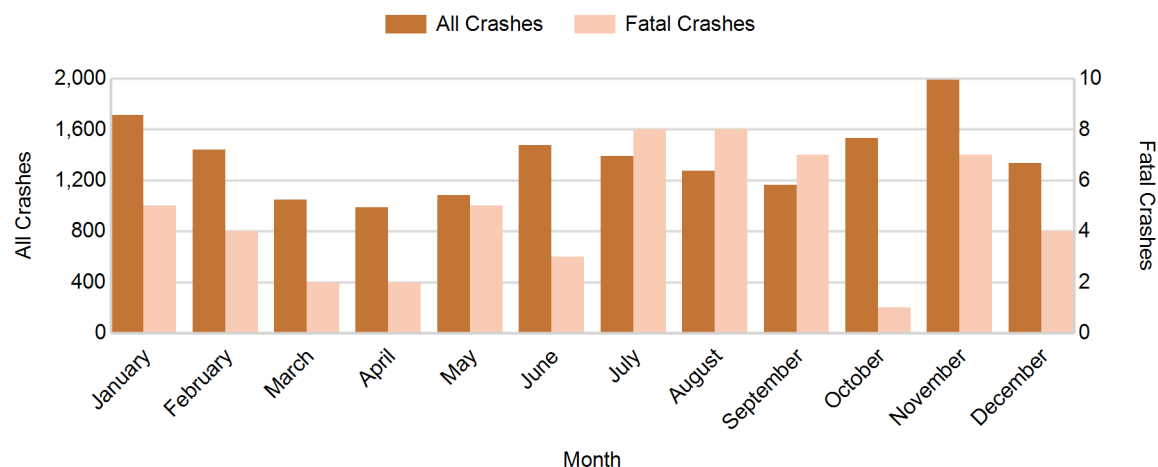
Note: † Indicates that the highest number of total crashes reported in the 5-year period occurred in the same month

### 5-Year Trend - Crashes by Day of Week

Day	2011		2012		2013		2014		2015	
	Total Crashes	Fatal Crashes	Total Crashes	Fatal Crashes	Total Crashes	Fatal Crashes	Total Crashes	Fatal Crashes	Total Crashes	Fatal Crashes
Monday	2,274	5	2,281	5	2,518	12	2,439	8	2,277	6
Tuesday	2,369	6	2,171	5	2,629	7	2,607	5	2,272	8
Wednesday	2,273	5	2,196	7	2,604	7	2,648	6	2,498	15
Thursday	2,579	10	2,407	4	2,760	6	2,590	5	2,531	8
Friday	2,697 †	9	2,924 †	10	2,814 †	14	3,049 †	5	2,678 †	9
Saturday	2,445	10	2,216	9	2,336	14	2,232	12	2,245	6
Sunday	1,941	10	1,929	9	1,894	10	2,020	8	1,934	4
<b>Total</b>	<b>16,578</b>	<b>55</b>	<b>16,124</b>	<b>49</b>	<b>17,555</b>	<b>70</b>	<b>17,585</b>	<b>49</b>	<b>16,435</b>	<b>56</b>

Note: † Indicates that the highest number of total crashes reported in the 5-year period occurred on the same day of the week

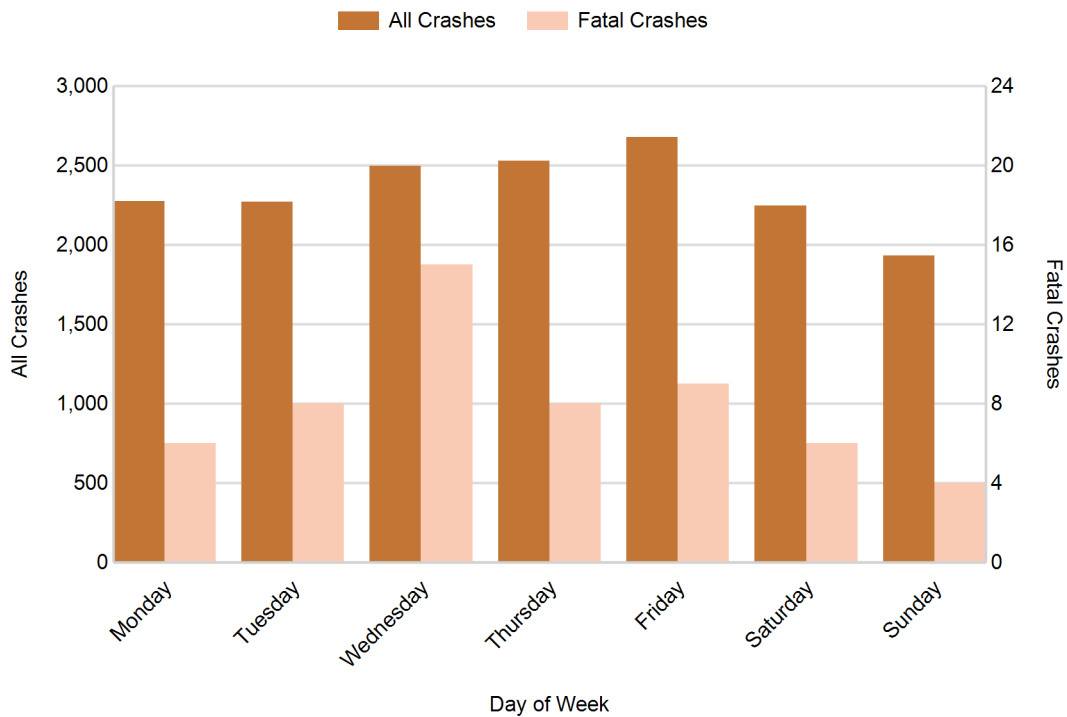
### 2015 Crashes by Month



## 2015 - Crashes by Day of Week

Day	All Crashes		Fatal Crashes		Injury Crashes			PDO Crashes
	Number	% of Total	Number	% of Fatal	A	B	C	Number
Monday	2,277	13.9	6	10.7	23	71	191	1,986
Tuesday	2,272	13.8	8	14.3	29	78	163	1,994
Wednesday	2,498	15.2	15	26.8	31	92	179	2,181
Thursday	2,531	15.4	8	14.3	32	91	195	2,205
Friday	2,678	16.3	9	16.1	40	111	213	2,305
Saturday	2,245	13.7	6	10.7	47	99	175	1,918
Sunday	1,934	11.8	4	7.1	39	103	167	1,621
<b>Total</b>	<b>16,435</b>	<b>100.0</b>	<b>56</b>	<b>100.0</b>	<b>241</b>	<b>645</b>	<b>1,283</b>	<b>14,210</b>

## 2015 Day of Week and Severity

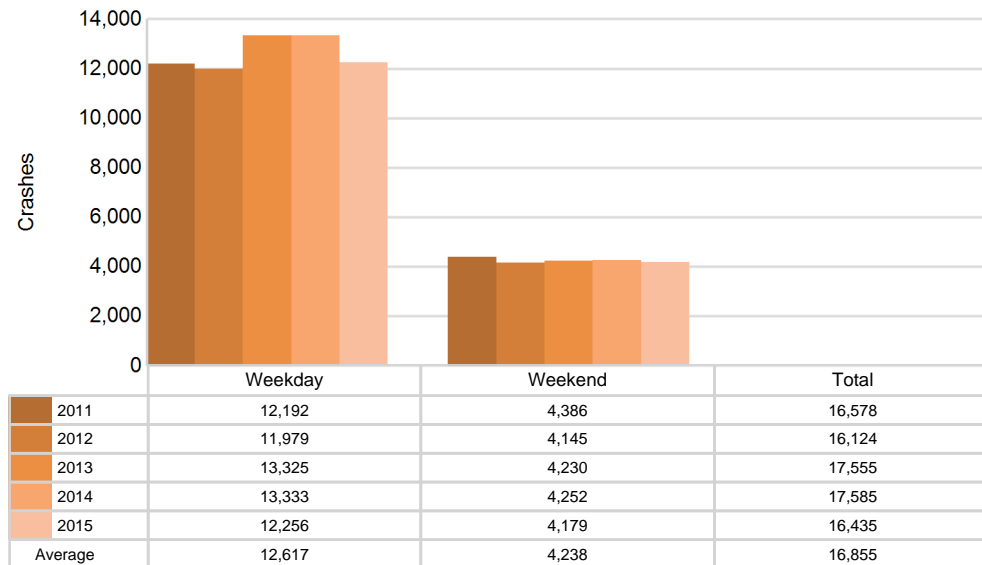


## MSP District 7 - Northern Lower Peninsula (continued)

### 5-Year Trend - Crashes by Weekday and Weekend

Portion of Week	2011		2012		2013		2014		2015	
	Total Crashes	Fatal Crashes	Total Crashes	Fatal Crashes	Total Crashes	Fatal Crashes	Total Crashes	Fatal Crashes	Total Crashes	Fatal Crashes
Weekday	12,192	35	11,979	31	13,325	46	13,333	29	12,256	46
Weekend	4,386	20	4,145	18	4,230	24	4,252	20	4,179	10
<b>Total</b>	<b>16,578</b>	<b>55</b>	<b>16,124</b>	<b>49</b>	<b>17,555</b>	<b>70</b>	<b>17,585</b>	<b>49</b>	<b>16,435</b>	<b>56</b>

### 5-Year Crash Trends by Weekday (Monday - Friday) and Weekend (Saturday & Sunday)



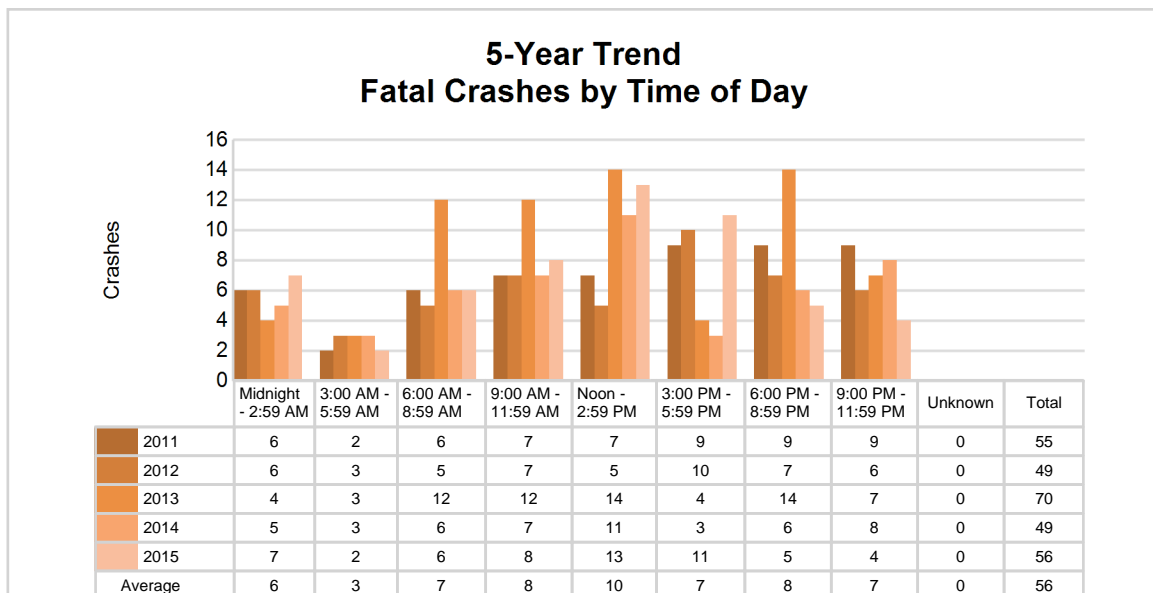
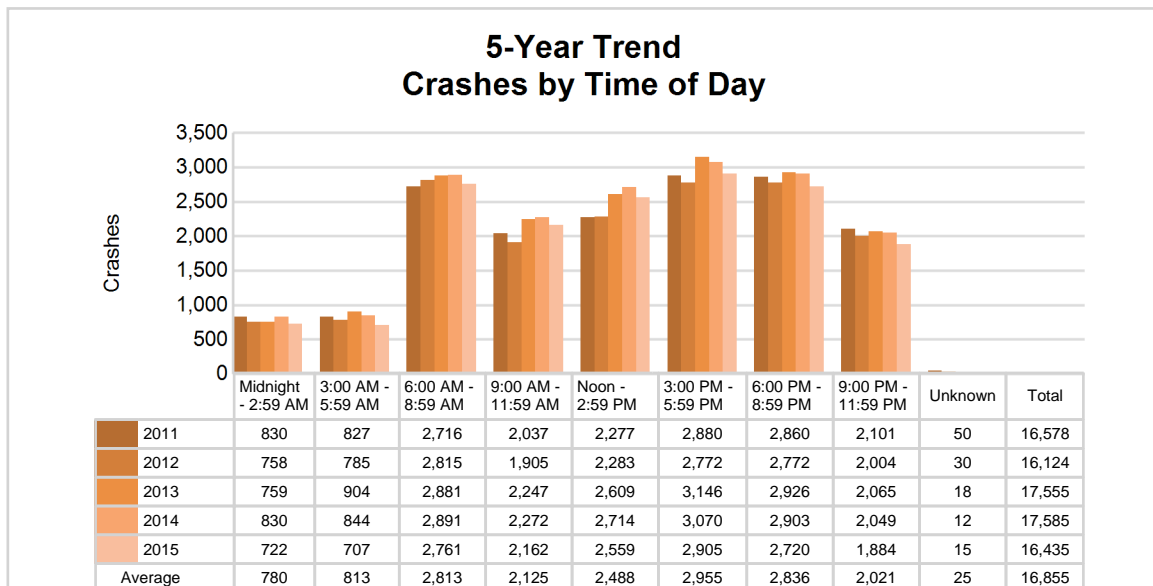
# MSP District 7 - Northern Lower Peninsula (continued)

5

## 5-Year Trend - Crashes by Time of Day

Time of Day	2011		2012		2013		2014		2015	
	Total Crashes	Fatal Crashes	Total Crashes	Fatal Crashes	Total Crashes	Fatal Crashes	Total Crashes	Fatal Crashes	Total Crashes	Fatal Crashes
Midnight - 2:59 AM	830	6	758	6	759	4	830	5	722	7
3:00 AM - 5:59 AM	827	2	785	3	904	3	844	3	707	2
6:00 AM - 8:59 AM	2,716	6	2,815	5	2,881	12	2,891	6	2,761	6
9:00 AM - 11:59 AM	2,037	7	1,905	7	2,247	12	2,272	7	2,162	8
Noon - 2:59 PM	2,277	7	2,283	5	2,609	14	2,714	11	2,559	13
3:00 PM - 5:59 PM	2,880	9	2,772	10	3,146	4	3,070	3	2,905	11
6:00 PM - 8:59 PM	2,860	9	2,772	7	2,926	14	2,903	6	2,720	5
9:00 PM - 11:59 PM	2,101	9	2,004	6	2,065	7	2,049	8	1,884	4
Unknown	50	0	30	0	18	0	12	0	15	0
<b>Total</b>	<b>16,578</b>	<b>55</b>	<b>16,124</b>	<b>49</b>	<b>17,555</b>	<b>70</b>	<b>17,585</b>	<b>49</b>	<b>16,435</b>	<b>56</b>

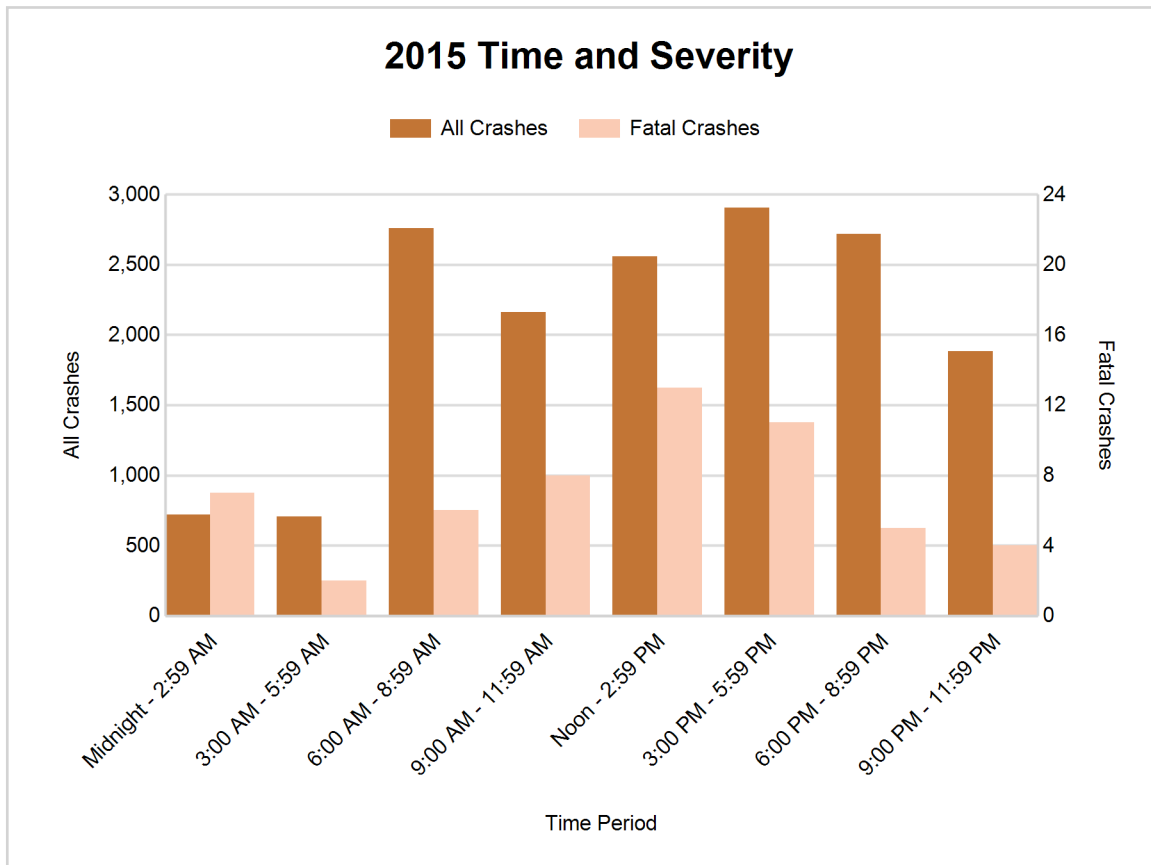
Note: † Indicates that the highest number of total crashes reported in the 5-year period occurred in the same time period



## MSP District 7 - Northern Lower Peninsula (continued)

### 2015 - Time and Severity

Time of Day	All Crashes		Fatal Crashes		Injury Crashes			PDO Crashes
	Number	% of Total	Number	% of Fatal	A	B	C	Number
Midnight - 2:59 AM	722	4.4	7	12.5	11	37	49	618
3:00 AM - 5:59 AM	707	4.3	2	3.6	13	20	26	646
6:00 AM - 8:59 AM	2,761	16.8	6	10.7	17	72	137	2,529
9:00 AM - 11:59 AM	2,162	13.2	8	14.3	35	80	224	1,815
Noon - 2:59 PM	2,559	15.6	13	23.2	50	150	284	2,062
3:00 PM - 5:59 PM	2,905	17.7	11	19.6	52	136	302	2,404
6:00 PM - 8:59 PM	2,720	16.6	5	8.9	40	89	157	2,429
9:00 PM - 11:59 PM	1,884	11.5	4	7.1	23	61	103	1,693
Unknown	15	0.1	0	0.0	0	0	1	14
<b>Total</b>	<b>16,435</b>	<b>100.0</b>	<b>56</b>	<b>100.0</b>	<b>241</b>	<b>645</b>	<b>1,283</b>	<b>14,210</b>



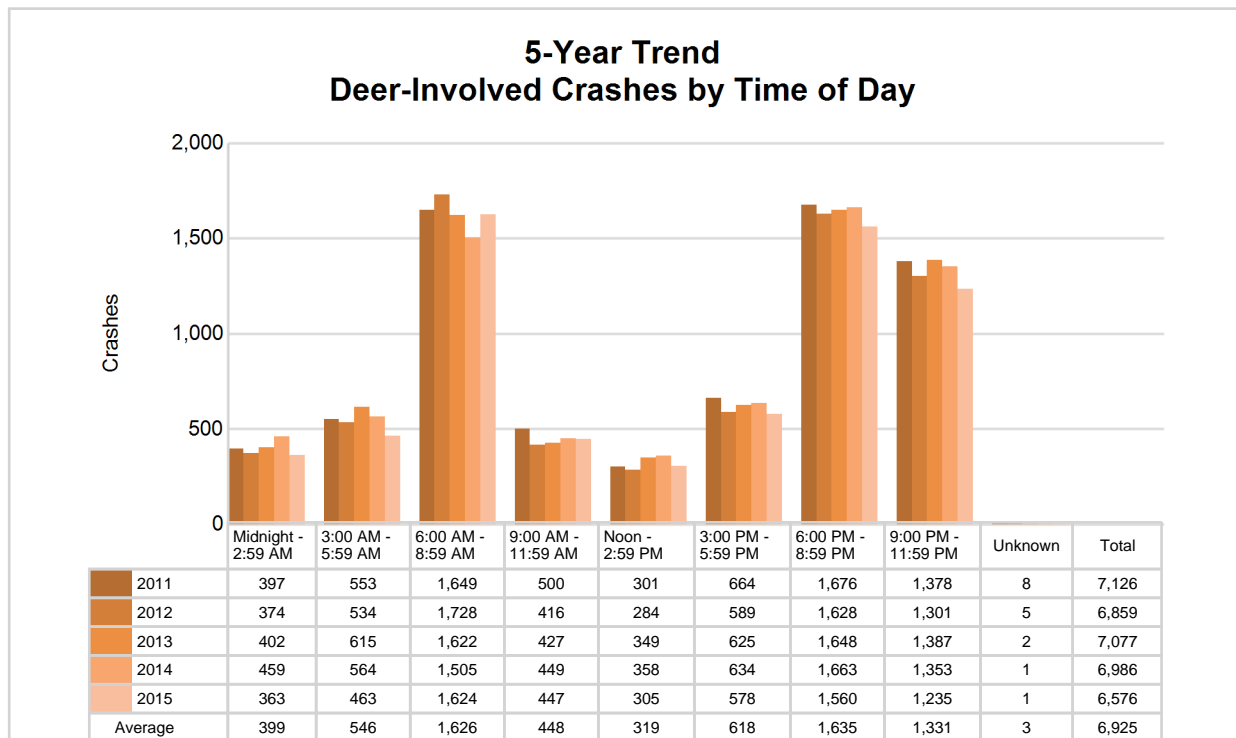


# MSP District 7 - Northern Lower Peninsula (continued)

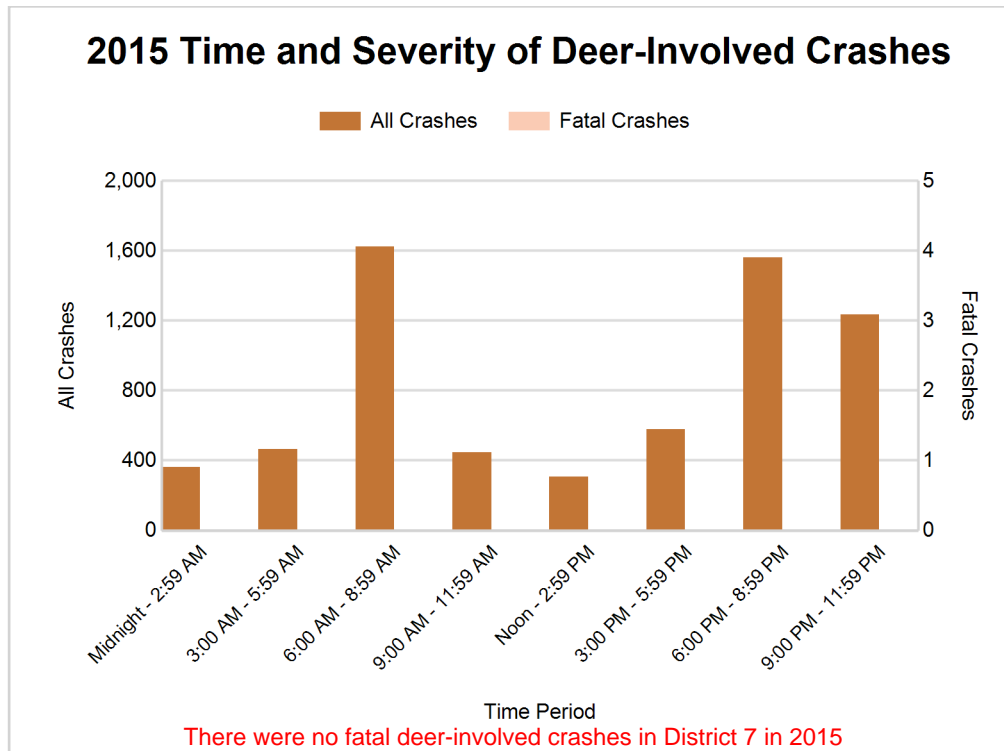
## 5-Year Trend - Deer-Involved Crashes by Time of Day

Time of Day	2011		2012		2013		2014		2015	
	Total Crashes	Fatal Crashes	Total Crashes	Fatal Crashes	Total Crashes	Fatal Crashes	Total Crashes	Fatal Crashes	Total Crashes	Fatal Crashes
Midnight - 2:59 AM	397	0	374	0	402	0	459	0	363	0
3:00 AM - 5:59 AM	553	0	534	0	615	0	564	0	463	0
6:00 AM - 8:59 AM	1,649	0	1,728	0	1,622	0	1,505	0	1,624	0
9:00 AM - 11:59 AM	500	0	416	0	427	0	449	0	447	0
Noon - 2:59 PM	301	0	284	0	349	0	358	0	305	0
3:00 PM - 5:59 PM	664	0	589	0	625	0	634	0	578	0
6:00 PM - 8:59 PM	1,676	0	1,628	0	1,648	0	1,663	0	1,560	0
9:00 PM - 11:59 PM	1,378	0	1,301	0	1,387	0	1,353	0	1,235	0
Unknown	8	0	5	0	2	0	1	0	1	0
<b>Total</b>	<b>7,126</b>	<b>0</b>	<b>6,859</b>	<b>0</b>	<b>7,077</b>	<b>0</b>	<b>6,986</b>	<b>0</b>	<b>6,576</b>	<b>0</b>

Note: † Indicates that the highest number of total crashes reported in the 5-year period occurred in the same time period



## MSP District 7 - Northern Lower Peninsula (continued)



### 2015 - Reported Motor Vehicle Crashes by County

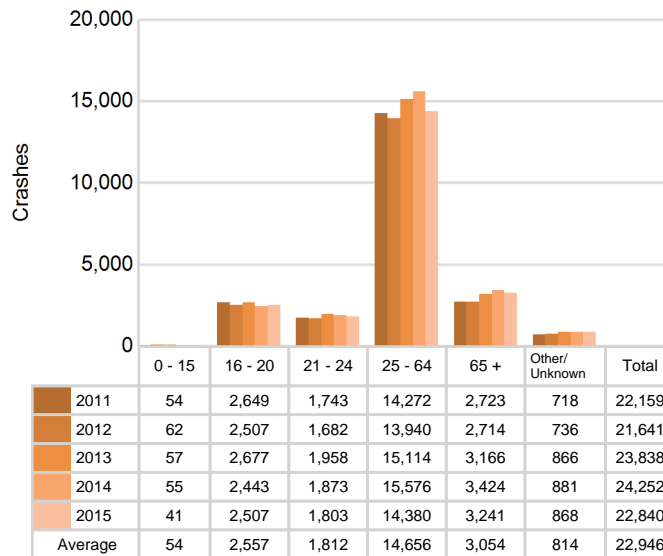
County	Crashes											Persons	
	Total	Fatal	Injury	Property Damage	Inter-state	US Route	State Route	Local Street	Alcohol-Involved	Drug-Involved	Deer-Involved	Fatalities	Injuries
Alcona	565	1	43	521	0	91	130	344	12	2	443	1	54
Alpena	798	2	120	676	0	176	170	452	33	6	291	2	154
Antrim	803	3	103	697	0	184	135	484	21	3	409	3	143
Benzie	557	4	68	485	0	146	123	288	16	4	281	4	92
Charlevoix	1,087	1	110	976	0	291	223	573	24	6	540	2	147
Cheboygan	885	0	136	749	191	54	214	426	33	3	409	0	177
Crawford	511	1	72	438	146	17	148	200	9	2	228	1	103
Emmet	1,393	3	175	1,215	11	498	111	773	46	14	442	4	238
Grand Traverse	3,439	10	490	2,939	0	1,015	431	1,993	104	29	629	11	697
Kalkaska	497	3	80	414	0	114	120	263	14	0	207	3	114
Leelanau	635	4	70	561	0	0	306	329	35	3	293	4	102
Manistee	910	0	107	803	0	280	154	476	29	4	455	0	154
Missaukee	589	4	65	520	0	0	244	345	20	4	368	5	80
Montmorency	318	0	37	281	0	0	141	177	6	0	198	0	44
Oscoda	262	0	39	223	0	0	131	131	5	1	144	0	49
Otsego	866	7	151	708	212	0	227	427	27	7	226	7	216
Presque Isle	526	2	41	483	0	98	157	271	18	4	364	2	60
Roscommon	701	2	102	597	85	88	220	308	26	4	306	2	149
Wexford	1,093	9	160	924	0	319	296	478	29	10	343	10	227
<b>Total</b>	<b>16,435</b>	<b>56</b>	<b>2,169</b>	<b>14,210</b>	<b>645</b>	<b>3,371</b>	<b>3,681</b>	<b>8,738</b>	<b>507</b>	<b>106</b>	<b>6,576</b>	<b>61</b>	<b>3,000</b>

# MSP District 7 - Northern Lower Peninsula (continued)

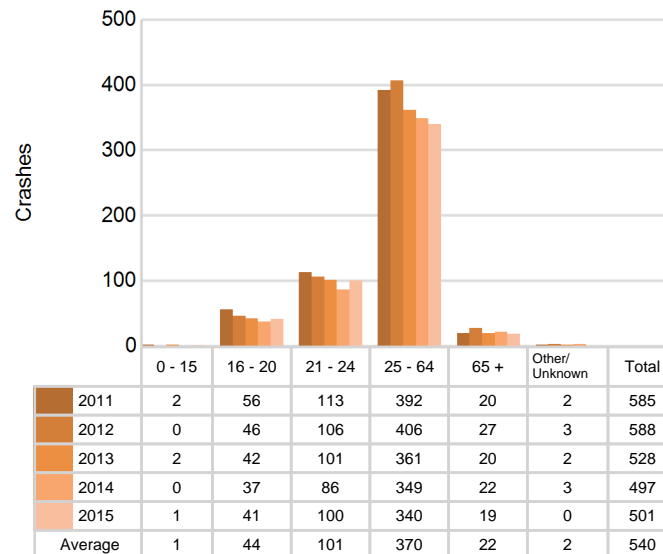
## 5-Year Trend - Drivers in Crashes Coded Drinking by Driver Age

Driver Age	2011		2012		2013		2014		2015	
	Total Drivers in Crashes	Total Drivers Coded Drinking	Total Drivers in Crashes	Total Drivers Coded Drinking	Total Drivers in Crashes	Total Drivers Coded Drinking	Total Drivers in Crashes	Total Drivers Coded Drinking	Total Drivers in Crashes	Total Drivers Coded Drinking
0 - 15	54	2	62	0	57	2	55	0	41	1
16 - 20	2,649	56	2,507	46	2,677	42	2,443	37	2,507	41
21 - 24	1,743	113	1,682	106	1,958	101	1,873	86	1,803	100
25 - 64	14,272	392	13,940	406	15,114	361	15,576	349	14,380	340
65 +	2,723	20	2,714	27	3,166	20	3,424	22	3,241	19
Unknown	718	2	736	3	866	2	881	3	868	0
<b>Total</b>	<b>22,159</b>	<b>585</b>	<b>21,641</b>	<b>588</b>	<b>23,838</b>	<b>528</b>	<b>24,252</b>	<b>497</b>	<b>22,840</b>	<b>501</b>

### 5-Year Trend Total Drivers in Crashes by Age



### 5-Year Trend Total Drivers Coded Drinking by Age



# MSP District 7 - Northern Lower Peninsula (continued)

## 2015 - Bodily Alcohol Concentration (BAC) Results Among All Vehicle Drivers in Alcohol-Involved Crashes by Age

Age Group	Drivers				BAC Result Range for Drivers Coded Drinking				
	Total Drivers in Alcohol-Involved Crashes	Total Drivers Tested in all Crashes	Total Drivers Coded Drinking, Tested	Total Drivers Coded Drinking	BAC = 0.00	BAC 0.01 g/dL to 0.07 g/dL	BAC 0.08 g/dL to 0.16 g/dL	BAC 0.17 g/dL and Above	BAC Not Reported
0 - 15	1	1	0	1	0	0	0	0	1
16 - 20	55	73	34	41	0	6	17	5	13
21 - 24	107	114	88	100	1	14	34	30	21
25 - 64	429	464	293	340	4	28	95	109	104
65 +	33	55	18	19	0	6	6	2	5
Unknown	28	0	0	0	0	0	0	0	0
<b>Total</b>	<b>653</b>	<b>707</b>	<b>433</b>	<b>501</b>	<b>5</b>	<b>54</b>	<b>152</b>	<b>146</b>	<b>144</b>

Notes: BAC measured in grams (g) per deciliter (dL).

BAC may not be reported if drivers are not tested or if the results are not available immediately (as in the case of a blood test).

A driver may be coded by the officer as drinking even though no test is administered.

## Alcohol-Involved Crashes

In 2015, there were 653 drivers in alcohol-involved crashes; 501 (76.7%) of those drivers were coded as had-been-drinking by the officer on the crash form.

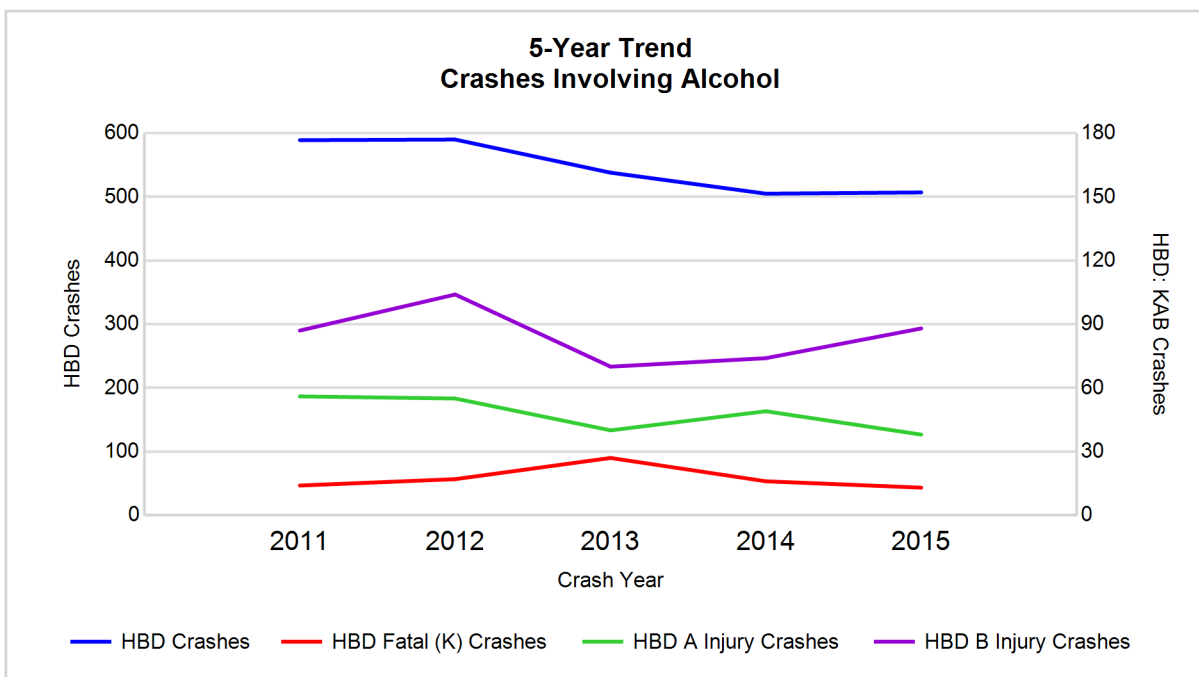
- 298 (59.5%) of the 501 drivers had a blood alcohol concentration (BAC) of 0.08 g/dL (grams per deciliter) or greater, and 146 (49.0%) of the 298 drivers had a BAC at or above 0.17 g/dL.
- 433 (86.4%) of the 501 drivers were coded as had-been-drinking and were tested for alcohol consumption.

## 5-Year Trend - Crashes Involving Alcohol

Year	All Crashes	HBD Crashes	% HBD	Fatal Crashes	HBD Fatal Crashes	% HBD	A Injury Crashes	HBD A Injury Crashes	% HBD	B Injury Crashes	HBD B Injury Crashes	% HBD
2011	16,578	589	3.6	55	14	25.5	318	56	17.6	721	87	12.1
2012	16,124	590	3.7	49	17	34.7	307	55	17.9	712	104	14.6
2013	17,555	538	3.1	70	27	38.6	284	40	14.1	671	70	10.4
2014	17,585	505	2.9	49	16	32.7	268	49	18.3	637	74	11.6
2015	16,435	507	3.1	56	13*	23.2*	241*	38*	15.8	645	88	13.6

Note: \* Indicates that the most recent year is the lowest number or percentage reported in the 5-year period in that column

\*\* Indicates that the most recent year is the highest number or percentage reported in the 5-year period in that column



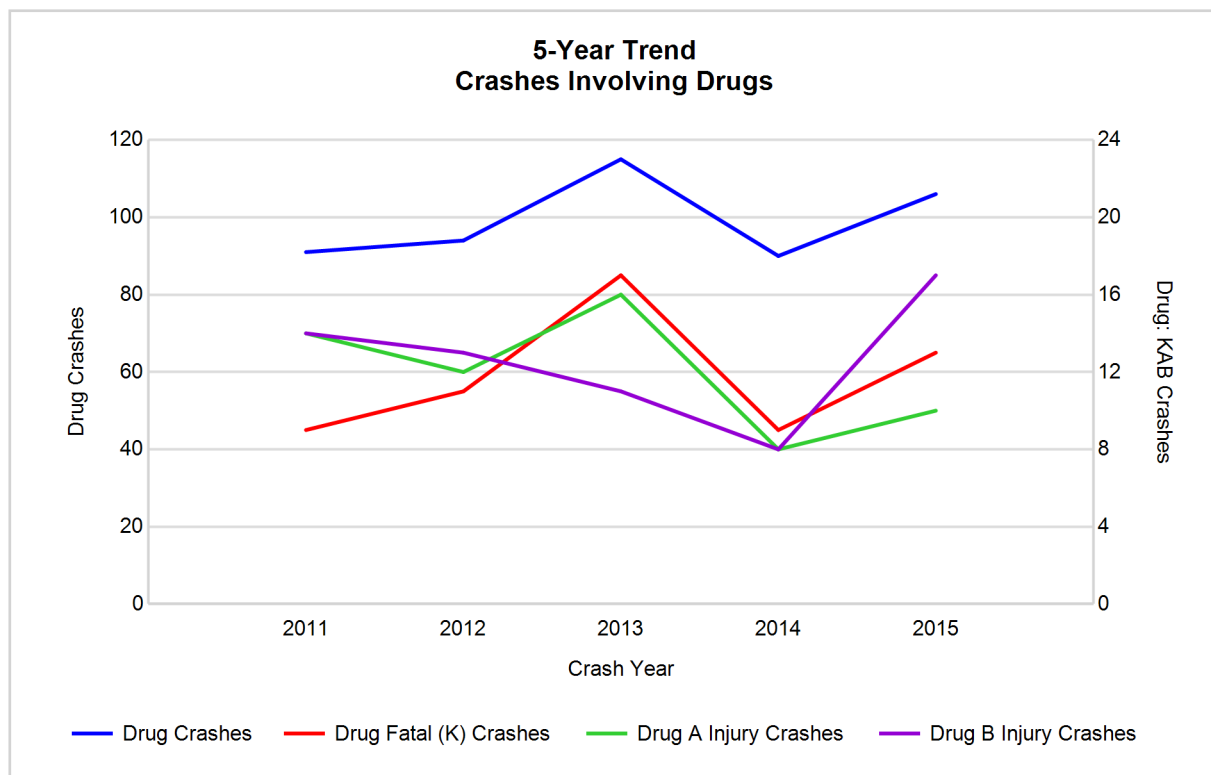
Note: Had-Been-Drinking (HBD)

## 5-Year Trend - Crashes Involving Drugs

Year	All Crashes	Drug Crashes	% Drug	Fatal Crashes	Drug Fatal Crashes	% Drug	A Injury Crashes	Drug A Injury Crashes	% Drug	B Injury Crashes	Drug B Injury Crashes	% Drug
2011	16,578	91	0.5	55	9	16.4	318	14	4.4	721	14	1.9
2012	16,124	94	0.6	49	11	22.4	307	12	3.9	712	13	1.8
2013	17,555	115	0.7	70	17	24.3	284	16	5.6	671	11	1.6
2014	17,585	90	0.5	49	9	18.4	268	8	3.0	637	8	1.3
2015	16,435	106	0.6	56	13	23.2	241*	10	4.1	645	17**	2.6**

Note: \* Indicates that the most recent year is the lowest number or percentage reported in the 5-year period in that column

\*\* Indicates that the most recent year is the highest number or percentage reported in the 5-year period in that column



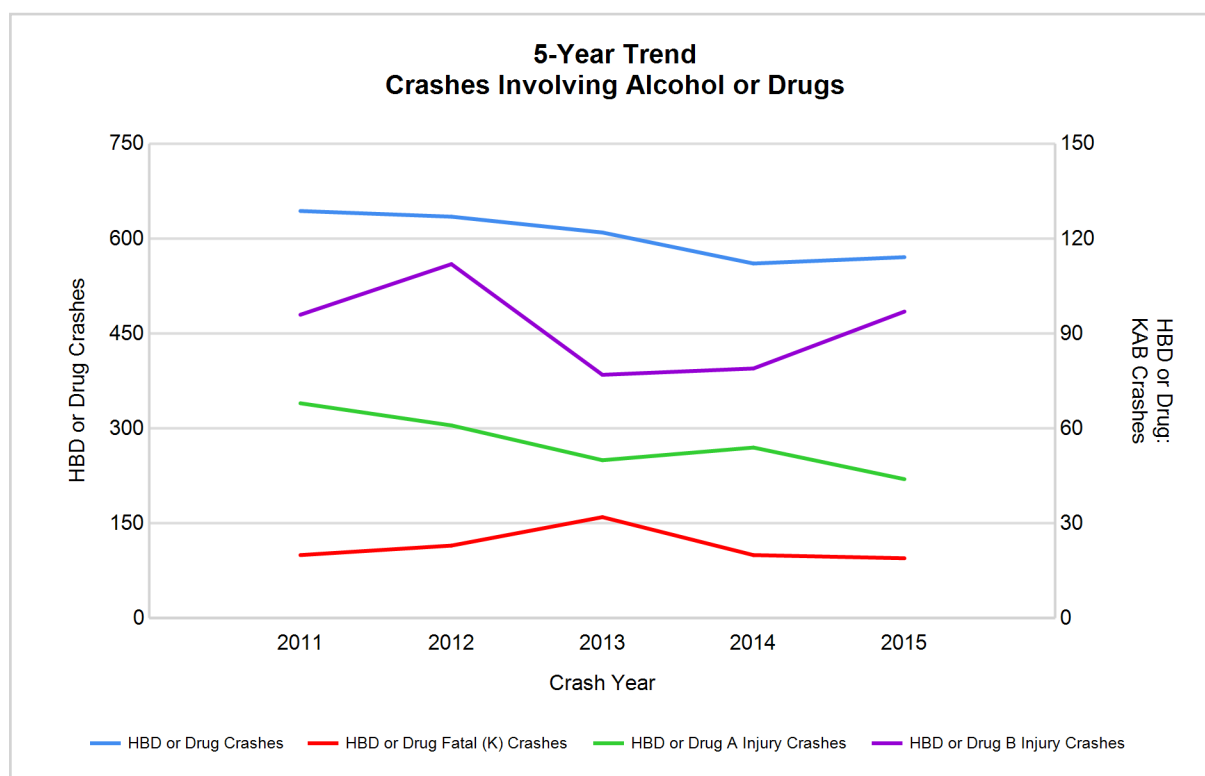
# MSP District 7 - Northern Lower Peninsula (continued)

## 5-Year Trend - Crashes Involving Alcohol or Drugs

Year	All Crashes	HBD or Drug Crashes	% HBD or Drug	Fatal Crashes	HBD or Drug Fatal Crashes	% HBD or Drug	A Injury Crashes	HBD or Drug A Injury Crashes	% HBD or Drug	B Injury Crashes	HBD or Drug B Injury Crashes	% HBD or Drug
2011	16,578	644	3.9	55	20	36.4	318	68	21.4	721	96	13.3
2012	16,124	635	3.9	49	23	46.9	307	61	19.9	712	112	15.7
2013	17,555	610	3.5	70	32	45.7	284	50	17.6	671	77	11.5
2014	17,585	561	3.2	49	20	40.8	268	54	20.1	637	79	12.4
2015	16,435	571	3.5	56	19*	33.9*	241*	44*	18.3	645	97	15.0

Note: \* Indicates that the most recent year is the lowest number or percentage reported in the 5-year period in that column

\*\* Indicates that the most recent year is the highest number or percentage reported in the 5-year period in that column



Note: Had-Been-Drinking (HBD)

# MSP District 7 - Northern Lower Peninsula (continued)

13

## 2015 - Restraints Worn Among Vehicle Drivers and Injured Passengers by Vehicle Type

Vehicle Type	Total Occupants			Fatalities			A - Incapacitating			B - Non-incapacitating			C - Possible Injury			No Injury		
	Total	Used Restraint	%	Total	Used Restraint	%	Total	Used Restraint	%	Total	Used Restraint	%	Total	Used Restraint	%	Total	Used Restraint	%
Passenger car & station wagon	16,786	15,887	94.6	35	18	51.4	165	120	72.7	514	472	91.8	1,376	1,311	95.3	14,287	13,956	97.7
Van & motorhome	843	790	93.7	2	1	50.0	9	7	77.8	25	17	68.0	64	61	95.3	720	703	97.6
Pickup truck	4,484	4,183	93.3	9	6	66.7	36	20	55.6	126	103	81.7	271	245	90.4	3,896	3,801	97.6
Small truck under 10,000 lbs. GVWR	424	390	92.0	0	0	0.0	3	0	0.0	9	9	100.0	21	20	95.2	375	360	96.0
Cycle	197	133	67.5	6	6	100.0	37	25	67.6	52	37	71.2	49	30	61.2	52	35	67.3
Moped	21	12	57.1	0	0	0.0	7	4	57.1	6	4	66.7	4	2	50.0	4	2	50.0
Go Cart	2	0	0.0	0	0	0.0	0	0	0.0	2	0	0.0	0	0	0.0	0	0	0.0
Snowmobile	51	40	78.4	1	1	100.0	8	8	100.0	13	10	76.9	10	7	70.0	18	14	77.8
Off-Road Vehicle (ORV) & All-Terrain Vehicle (ATV)	74	42	56.8	3	1	33.3	15	10	66.7	27	14	51.9	19	12	63.2	10	5	50.0
Other	84	54	64.3	0	0	0.0	0	0	0.0	2	0	0.0	3	1	33.3	73	53	72.6
Truck/bus over 10,000 lbs.	451	422	93.6	2	1	50.0	2	1	50.0	10	8	80.0	13	10	76.9	415	401	96.6
Unknown	234	4	1.7	0	0	0.0	0	0	0.0	0	0	0.0	0	0	0.0	5	3	60.0
<b>Total</b>	<b>23,651</b>	<b>21,957</b>	<b>92.8</b>	<b>58</b>	<b>34</b>	<b>58.6</b>	<b>282</b>	<b>195</b>	<b>69.1</b>	<b>786</b>	<b>674</b>	<b>85.8</b>	<b>1,830</b>	<b>1,699</b>	<b>92.8</b>	<b>19,855</b>	<b>19,333</b>	<b>97.4</b>

Note: Restraint Use includes shoulder belt only used, lap belt only used, both lap and shoulder belts used, child restraint used, restraint failure, and helmet worn.

## 2015 - Restraints Worn Among Vehicle Drivers and Injured Passengers by Age

Age Group	Total Occupants			Fatalities			A - Incapacitating			B - Non-incapacitating			C - Possible Injury			No Injury		
	Total	Used Restraint	%	Total	Used Restraint	%	Total	Used Restraint	%	Total	Used Restraint	%	Total	Used Restraint	%	Total	Used Restraint	%
0 - 15	238	198	83.2	2	1	50.0	15	8	53.3	60	46	76.7	137	123	89.8	24	20	83.3
16 - 20	2,649	2,536	95.7	7	5	71.4	41	24	58.5	125	108	86.4	277	250	90.3	2,194	2,146	97.8
21 - 24	1,861	1,770	95.1	3	1	33.3	25	19	76.0	78	68	87.2	144	130	90.3	1,610	1,552	96.4
25 - 64	14,683	14,174	96.5	29	15	51.7	156	108	69.2	410	349	85.1	988	922	93.3	13,071	12,768	97.7
65 +	3,350	3,265	97.5	17	12	70.6	45	36	80.0	110	103	93.6	281	272	96.8	2,891	2,838	98.2
Unknown	870	14	1.6	0	0	0.0	0	0	0.0	3	0	0.0	3	2	66.7	65	9	13.8
<b>Total</b>	<b>23,651</b>	<b>21,957</b>	<b>92.8</b>	<b>58</b>	<b>34</b>	<b>58.6</b>	<b>282</b>	<b>195</b>	<b>69.1</b>	<b>786</b>	<b>674</b>	<b>85.8</b>	<b>1,830</b>	<b>1,699</b>	<b>92.8</b>	<b>19,855</b>	<b>19,333</b>	<b>97.4</b>

Note: Restraint Use includes shoulder belt only used, lap belt only used, both lap and shoulder belts used, child restraint used, restraint failure, and helmet worn.

# MSP District 7 - Northern Lower Peninsula (continued)

## 5-Year Trend - Restraint Use Among Drivers

Restraint Use	2011			2012			2013			2014			2015		
	Drivers	Fatal Drivers	Injured Drivers	Drivers	Fatal Drivers	Injured Drivers	Drivers	Fatal Drivers	Injured Drivers	Drivers	Fatal Drivers	Injured Drivers	Drivers	Fatal Drivers	Injured Drivers
No belts available	160	0	26	186	0	30	105	1	22	187	0	21	114	1	18
Shoulder belt only used	11	0	1	13	0	4	13	0	2	38	0	9	45	0	11
Lap belt only used	91	0	5	78	0	7	60	0	10	83	0	5	73	0	3
Both lap & shoulder belts used	20,354	20	1,815	19,833	17	1,665	22,002	24	1,827	22,243	16	1,703	20,949	14	1,743
No belts used	179	13	83	167	11	83	142	14	60	179	4	67	165	13	73
Child restraint used	0	0	0	4	0	0	2	0	0	1	0	0	0	0	0
Child restraint not used, unavailable or improper use	5	0	1	4	0	0	3	0	0	1	0	0	1	0	1
Restraint failure	12	0	1	11	0	2	16	0	1	7	1	1	4	0	0
Restraint use unknown	392	2	62	413	3	51	453	2	53	483	2	59	435	5	43
Helmet worn	311	7	237	259	6	184	245	6	177	240	6	179	207	7	145
Helmet not worn	19	2	16	56	3	47	58	8	46	54	1	38	74	1	56
Helmet use unknown	6	0	2	12	1	4	11	2	5	9	0	3	16	1	8
Uncoded & errors	619	0	6	605	0	5	728	0	2	727	0	2	757	0	2
<b>Total</b>	<b>22,159</b>	<b>44</b>	<b>2,255</b>	<b>21,641</b>	<b>41</b>	<b>2,082</b>	<b>23,838</b>	<b>57</b>	<b>2,205</b>	<b>24,252</b>	<b>30</b>	<b>2,087</b>	<b>22,840</b>	<b>42</b>	<b>2,103</b>

## 5-Year Trend - Restraint Use Among Drivers Coded Drinking

Restraint Use	2011			2012			2013			2014			2015		
	Drivers	Fatal Drivers	Injured Drivers	Drivers	Fatal Drivers	Injured Drivers	Drivers	Fatal Drivers	Injured Drivers	Drivers	Fatal Drivers	Injured Drivers	Drivers	Fatal Drivers	Injured Drivers
No belts available	10	0	5	3	0	1	1	0	1	6	0	1	4	0	3
Shoulder belt only used	0	0	0	4	0	2	2	0	2	2	0	2	2	0	0
Lap belt only used	1	0	0	2	0	0	3	0	2	2	0	0	1	0	1
Both lap & shoulder belts used	406	5	108	416	3	114	366	5	95	345	3	94	360	2	111
No belts used	43	3	28	44	8	26	36	9	16	32	3	26	40	5	23
Child restraint used	0	0	0	0	0	0	0	0	0	0	0	0	0	0	0
Child restraint not used, unavailable or improper use	0	0	0	0	0	0	0	0	0	0	0	0	0	0	0
Restraint failure	0	0	0	0	0	0	0	0	0	2	0	0	0	0	0
Restraint use unknown	89	1	24	86	1	29	88	1	25	79	1	28	70	1	22
Helmet worn	18	4	9	19	3	14	16	3	11	16	3	11	11	3	8
Helmet not worn	10	0	10	10	0	9	14	4	9	10	0	10	11	0	11
Helmet use unknown	3	0	1	0	0	0	0	0	0	1	0	0	1	0	1
Uncoded & errors	5	0	1	4	0	0	2	0	0	2	0	0	1	0	0
<b>Total</b>	<b>585</b>	<b>13</b>	<b>186</b>	<b>588</b>	<b>15</b>	<b>195</b>	<b>528</b>	<b>22</b>	<b>161</b>	<b>497</b>	<b>10</b>	<b>172</b>	<b>501</b>	<b>11</b>	<b>180</b>

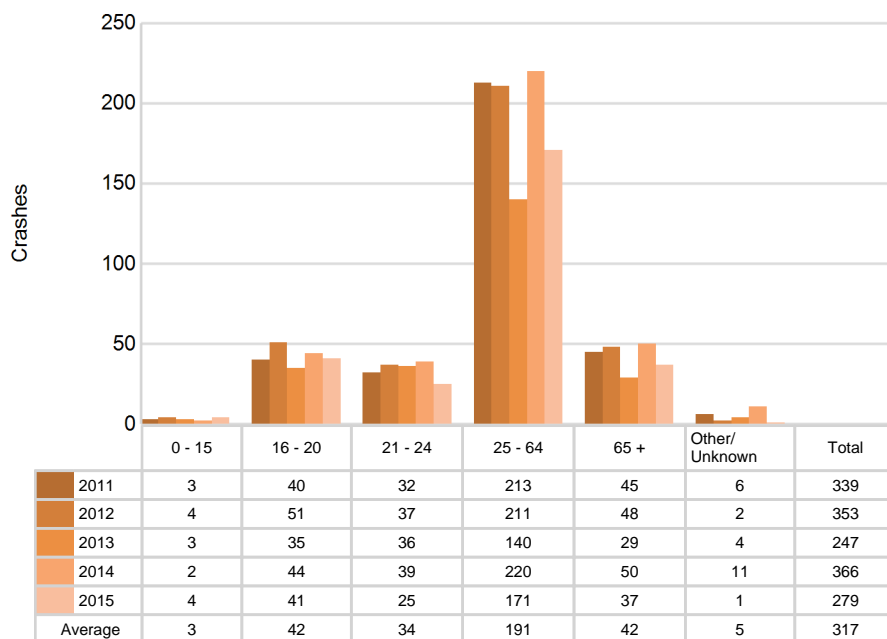


## 5-Year Trend - Seatbelt Not Used Among Drivers by Age

Age Group	2011			2012			2013			2014			2015		
	Drivers	Fatal Drivers	Injured Drivers	Drivers	Fatal Drivers	Injured Drivers	Drivers	Fatal Drivers	Injured Drivers	Drivers	Fatal Drivers	Injured Drivers	Drivers	Fatal Drivers	Injured Drivers
0 - 15	3	0	2	4	0	2	3	0	2	2	0	0	4	0	1
16 - 20	40	1	13	51	1	18	35	0	20	44	1	14	41	1	18
21 - 24	32	0	16	37	3	13	36	2	8	39	0	16	25	1	6
25 - 64	213	10	69	211	4	66	140	10	45	220	2	52	171	8	56
65 +	45	2	8	48	3	14	29	3	7	50	1	6	37	4	10
Unknown	6	0	1	2	0	0	4	0	0	11	0	0	1	0	0
<b>Total</b>	<b>339</b>	<b>13</b>	<b>109</b>	<b>353</b>	<b>11</b>	<b>113</b>	<b>247</b>	<b>15</b>	<b>82</b>	<b>366</b>	<b>4</b>	<b>88</b>	<b>279</b>	<b>14</b>	<b>91</b>

Note: Seatbelt Not Used includes no belts available or no belts used.

## 5-Year Trend Driver Seatbelt Not Used



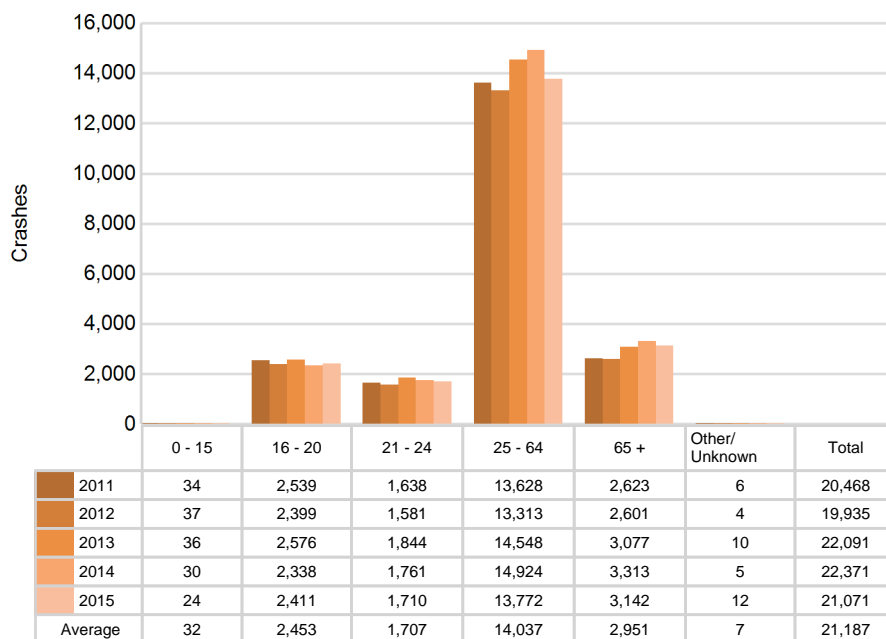
# MSP District 7 - Northern Lower Peninsula (continued)

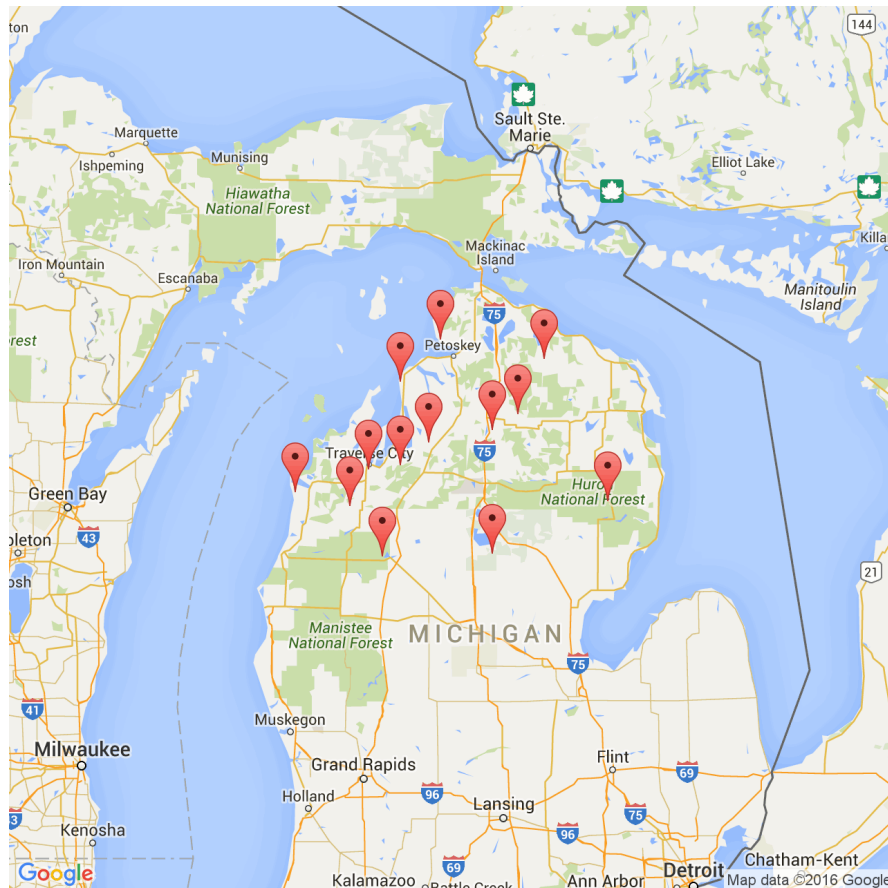
## 5-Year Trend - Seatbelt Used Among Drivers by Age

Age Group	2011			2012			2013			2014			2015		
	Drivers	Fatal Drivers	Injured Drivers	Drivers	Fatal Drivers	Injured Drivers	Drivers	Fatal Drivers	Injured Drivers	Drivers	Fatal Drivers	Injured Drivers	Drivers	Fatal Drivers	Injured Drivers
0 - 15	34	0	4	37	0	1	36	1	4	30	0	4	24	0	5
16 - 20	2,539	0	273	2,399	1	266	2,576	4	242	2,338	2	206	2,411	3	264
21 - 24	1,638	5	171	1,581	3	142	1,844	1	174	1,761	3	156	1,710	0	166
25 - 64	13,628	9	1,103	13,313	8	1,021	14,548	11	1,116	14,924	9	1,050	13,772	7	1,022
65 +	2,623	6	271	2,601	5	248	3,077	7	303	3,313	3	301	3,142	4	299
Unknown	6	0	0	4	0	0	10	0	1	5	0	1	12	0	1
<b>Total</b>	<b>20,468</b>	<b>20</b>	<b>1,822</b>	<b>19,935</b>	<b>17</b>	<b>1,678</b>	<b>22,091</b>	<b>24</b>	<b>1,840</b>	<b>22,371</b>	<b>17</b>	<b>1,718</b>	<b>21,071</b>	<b>14</b>	<b>1,757</b>

Note: Seatbelt Used includes shoulder belt only used, lap belt only used, both lap and shoulder belts used, and restraint failure.

## 5-Year Trend Driver Seatbelt Used





The picture above represents all 2015 alcohol-involved fatal crashes in District 7.

In 2015, there were 507 alcohol-involved crashes in District 7:

- 13 K - Fatal Crashes
- 38 A - Incapacitating Injury Crashes
- 88 B - Non-incapacitating Injury Crashes
- 94 C - Possible Injury Crashes
- 274 O - Property Damage Only/No Injury Crashes

### Office of Highway Safety Planning

Physical Address:  
7150 Harris Drive  
Dimondale, Michigan 48821

Mailing Address:  
P.O. Box 30634  
Lansing, Michigan 48909

Phone: (517) 284-3140  
Fax: (517) 284-3151

Find us on the web:  
[MichiganTrafficCrashFacts.org](http://MichiganTrafficCrashFacts.org)

