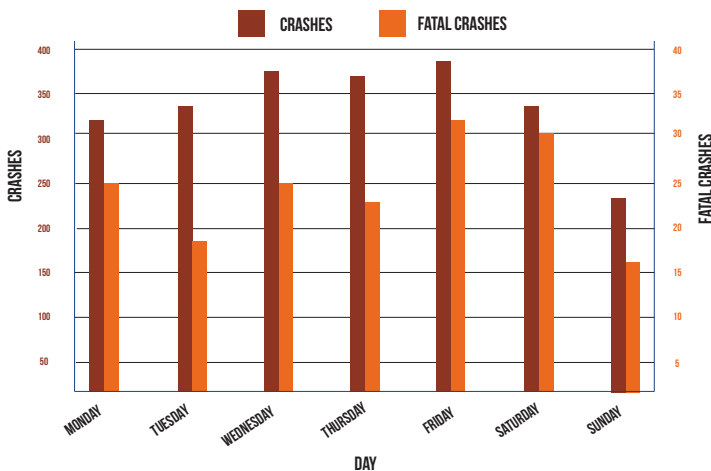


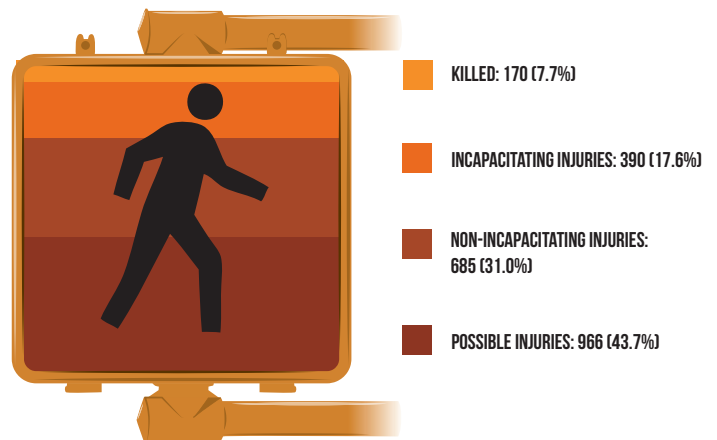
# 2015

*Pedestrians are defined as a person on foot, skis, skates, rollerblades, or a non-motorized wheelchair, or the rider of a horse or a horse and buggy. Each pedestrian is listed as a separate unit on the Traffic Crash Report.*

### PEDESTRIAN-INVOLVED CRASHES BY DAY OF THE WEEK



### PEDESTRIAN INJURY SEVERITY IN CRASHES



There were 2,482 pedestrians involved in 2,354 motor vehicle crashes.

Of the 2,482 pedestrians involved in crashes, 170 (6.8%) were killed and 2,041 (82.2%) were injured.

There were 112 (65.9%) male pedestrians killed and 58 (34.1%) female pedestrians killed.

Of all pedestrian actions prior to a crash, "crossing not at an intersection" is the most deadly, accounting for 55 (32.4%) of the pedestrian fatalities.

For each pedestrian killed, there were about 12 pedestrians injured.

The highest number of pedestrian-involved crashes occurred during October, with 237 (10.1%).

The time periods with the most pedestrian-involved crashes occurred from 5:00-5:59 PM and 6:00-6:59 PM, with 172 (7.3%).

Friday was the deadliest day for pedestrians with 31 (18.5%) pedestrian-involved fatal crashes and 31 (18.2%) pedestrian fatalities.

Of the 170 pedestrians killed, 51 (30.0%) of the deaths were the result of an alcohol-involved crash and 37 (72.5%) of those pedestrians had been drinking.