

# MTCF

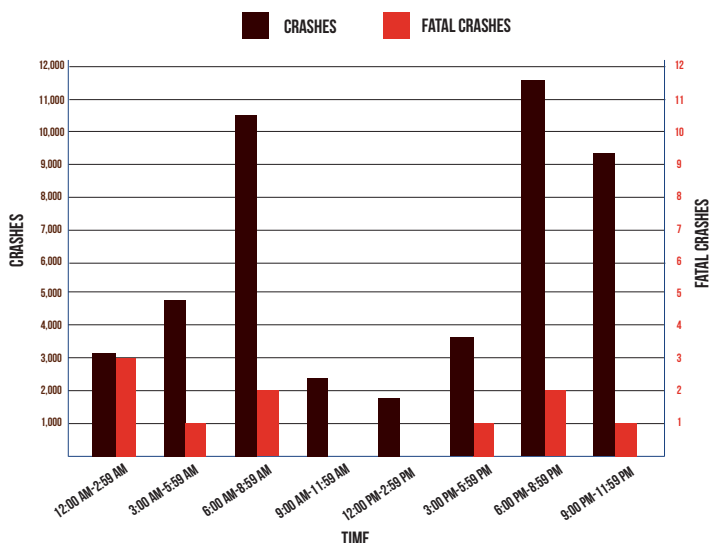
Michigan Traffic  
Crash Facts

# DEER

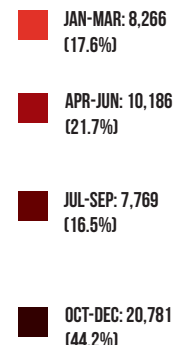
# 2015

*Deer crashes include situations where a deer is a contributing factor, but does not necessarily come in contact with a traffic unit.*

## MOTOR VEHICLE-DEER CRASHES BY TIME OF DAY



## MOTOR VEHICLE-DEER CRASHES BY TIME OF YEAR



Michigan had 47,002 (15.8% of the total crashes) motor vehicle-deer crashes.

Passenger cars and station wagons represented 76.4 percent (36,088) of the vehicles involved.

As a result of vehicle-deer crashes, 1,132 people were injured and 11 people were killed. Six (54.5%) of those killed were occupants in passenger vehicles and five (45.5%) killed were motorcyclists.

Motor vehicle-deer involved crashes were highest during the 7:00-7:59 PM time period (4,408).

The top 10 counties experiencing vehicle-deer crashes were: Oakland 1,873; Kent 1,528; Jackson 1,324; Lapeer 1,230; Ingham 1,087; Eaton 1,071; Washtenaw 1,062; Genesee 1,037; Calhoun 1,009; and Montcalm 999.

The highest number of vehicle-deer crashes occurred during November (9,292).

Of the motor vehicle-deer crashes, 20,781 (44.2%) occurred during the fourth quarter of the year.

Michigan Department of State Police  
Criminal Justice Information Center - Traffic Crash Reporting (517) 241-1699  
Office of Highway Safety Planning - Traffic Safety Programs (517) 284-3140  
WWW.MICHIGAN.GOV/OHSP

