



2015

MTCF
Michigan Traffic
Crash Facts

Michigan Traffic Crash Facts

Reporting Criteria

Please pay particular attention to the wording when interpreting the three levels of data gathered for this report.

Crash

The Crash Level analyzes data related to crash events and returns one result per crash.

Examples: Time, weather, and location.

Units

The Units Level analyzes the experience of the units in the crash and returns one result per vehicle, driver, pedestrian, bicyclist, or train.

Examples: Vehicle type, driver condition, and unit events.

People

The People Level analyzes the experience of the people involved in the crash and returns one result per occupant/person/party.

Examples: Age, injury severity, and seat belt or helmet use.

KABCO Injury Indicator:

K = Killed

A = Incapacitating Injury

B = Non-incapacitating Injury

C = Possible Injury

O = No Injury

Property Damage Only (PDO)



Michigan Commercial Motor Vehicles

2015 Traffic Crash Data & 2011-2015 5-Year Trends

Summary Trends

Year	Total Crashes	Fatal Crashes	Injury Crashes	Fatalities	Injuries
2011	10,511	69	1,830	73	2,591
2012	9,388	74	1,706	80	2,363
2013	10,773	80	1,885	94	2,805
2014	12,763	94	2,138	105	3,044
2015	11,890	78	2,031	85	2,901

Sources:

The crashes in this report occurred on public roadways in Michigan and resulted in injuries, fatalities, or property damage (with \$1,000 as a reporting threshold). The information was gathered from Michigan Traffic Crash Report Forms (UD-10) submitted by local police departments, sheriff's offices, and the Michigan State Police. Other related information was obtained from the departments of Transportation, State, and Community Health.

This page left intentionally blank

Commercial Motor Vehicle Experience

In 2015:

There were 23,164 drivers involved in 11,890 commercial motor vehicle crashes in Michigan. Of those crashes, 78 were classified as fatal, resulting in 85 fatalities. An additional 2,901 persons were injured.

Michigan experienced the highest number of commercial motor vehicle crashes (1,472) in January, the highest number of fatal crashes (11) and the highest number of persons killed (12) in July.

Michigan driver statistics indicate 6.6 percent of licensed drivers were age 16-20, and 4.7 percent of drivers in crashes were also in that age group.

2015 - Crashes and Injuries by Month

Month	Crashes				Persons	
	Total	Fatal	Injury	Property Damage Only (PDO)	Fatalities	Injuries
January	1,472	10	250	1,212	11	379
February	1,365	6	238	1,121	6	344
March	915	1	160	754	1	215
April	783	5	145	633	5	218
May	847	4	130	713	5	180
June	921	8	154	759	9	209
July	871	11	146	714	12	210
August	803	9	151	643	9	229
September	976	7	178	791	7	267
October	1,057	7	177	873	9	247
November	993	8	147	838	9	193
December	887	2	155	730	2	210
Total	11,890	78	2,031	9,781	85	2,901

2015 - Driver Statistics

Age Group	Statewide			Driver Rates	
	2015 Population	Licensed Drivers	Drivers in Crashes	Per 10k Population	Per 10k Licensed
0 - 15	1,938,950	52,553	15	0.1	2.9
16 - 20	675,253	474,427	1,089	16.1	23.0
21 - 24	580,519	480,600	1,446	24.9	30.1
25 - 64	5,157,183	4,760,526	17,291	33.5	36.3
65 +	1,570,671	1,390,210	1,793	11.4	12.9
Unknown	--	--	1,530	--	--
Total	9,922,576	7,158,316	23,164	23.3	32.4

2015 - Vehicles in Crashes

Vehicle Type	Motor Vehicles		Fatal Crashes		Injury Crashes	PDO Crashes
	Number of Vehicles	% of Total	Number	% of Total	Number	Number
Passenger car & station wagon	8,536	36.9	88	38.3	1,832	6,616
Van & motorhome	542	2.3	7	3.0	104	431
Pickup truck	1,228	5.3	10	4.3	241	977
Small truck under 10,000 lbs. GVWR	144	0.6	2	0.9	28	114
Cycle	33	0.1	10	4.3	16	7
Moped	3	0.0	1	0.4	2	0
Go Cart	1	0.0	0	0.0	0	1
Snowmobile	1	0.0	0	0.0	1	0
Off-Road Vehicle (ORV) & All-Terrain Vehicle (ATV)	1	0.0	0	0.0	1	0
Other	67	0.3	0	0.0	8	59
Truck/bus over 10,000 lbs.	12,486	53.9	112	48.7	2,191	10,183
Unknown	122	0.5	0	0.0	8	114
Total	23,164	100.0	230	100.0	4,432	18,502

Commercial Motor Vehicles (continued)

5-Year Trend - Crashes by Month

Month	2011		2012		2013		2014		2015	
	Total Crashes	Fatal Crashes	Total Crashes	Fatal Crashes	Total Crashes	Fatal Crashes	Total Crashes	Fatal Crashes	Total Crashes	Fatal Crashes
January	1,161	6	983	5	1,126	9	2,043	6	1,472	10
February	1,233	7	769	7	1,081	7	1,628	13	1,365	6
March	806	6	700	7	719	4	989	10	915	1
April	685	5	645	5	656	5	728	8	783	5
May	826	6	818	4	880	5	884	6	847	4
June	835	5	781	10	761	3	819	10	921	8
July	742	8	704	4	774	5	774	9	871	11
August	742	5	712	11	789	11	818	7	803	9
September	886	6	781	5	856	7	977	8	976	7
October	941	5	923	6	1,020	10	1,081	5	1,057	7
November	888	4	750	4	947	6	1,233	7	993	8
December	766	6	822	6	1,164	8	789	5	887	2
Total	10,511	69	9,388	74	10,773	80	12,763	94	11,890	78

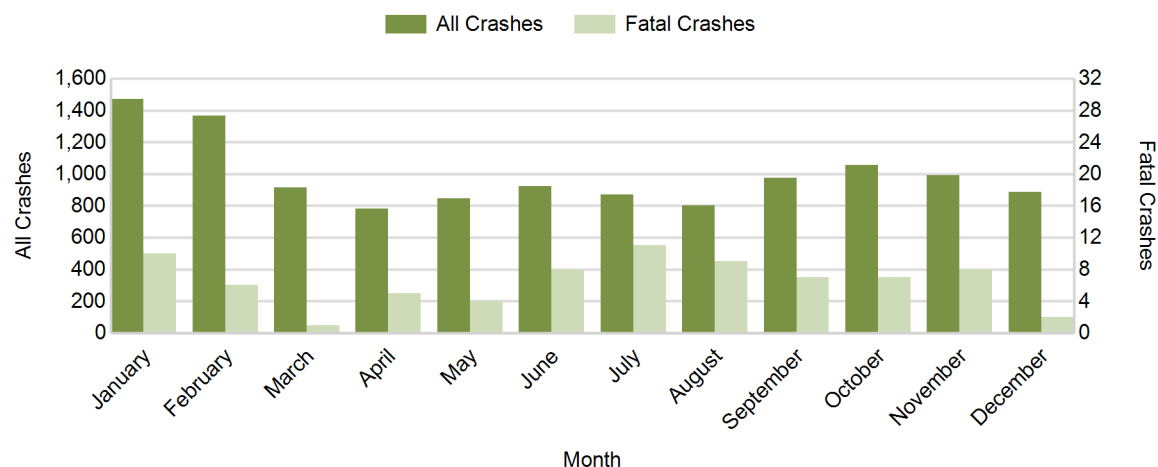
Note: † Indicates that the highest number of total crashes reported in the 5-year period occurred in the same month

5-Year Trend - Crashes by Day of Week

Day	2011		2012		2013		2014		2015	
	Total Crashes	Fatal Crashes	Total Crashes	Fatal Crashes	Total Crashes	Fatal Crashes	Total Crashes	Fatal Crashes	Total Crashes	Fatal Crashes
Monday	1,874	7	1,641	17	1,977	17	2,167	12	2,127	10
Tuesday	1,849	16	1,609	6	2,131	13	2,402	22	2,216	8
Wednesday	1,924	15	1,648	9	1,928	18	2,498	13	2,272	15
Thursday	1,957	12	1,685	10	1,877	11	2,381	21	2,084	18
Friday	1,906	8	1,893	22	1,793	11	2,109	13	2,041	16
Saturday	646	7	591	6	742	7	777	9	743	8
Sunday	355	4	321	4	325	3	429	4	407	3
Total	10,511	69	9,388	74	10,773	80	12,763	94	11,890	78

Note: † Indicates that the highest number of total crashes reported in the 5-year period occurred on the same day of the week

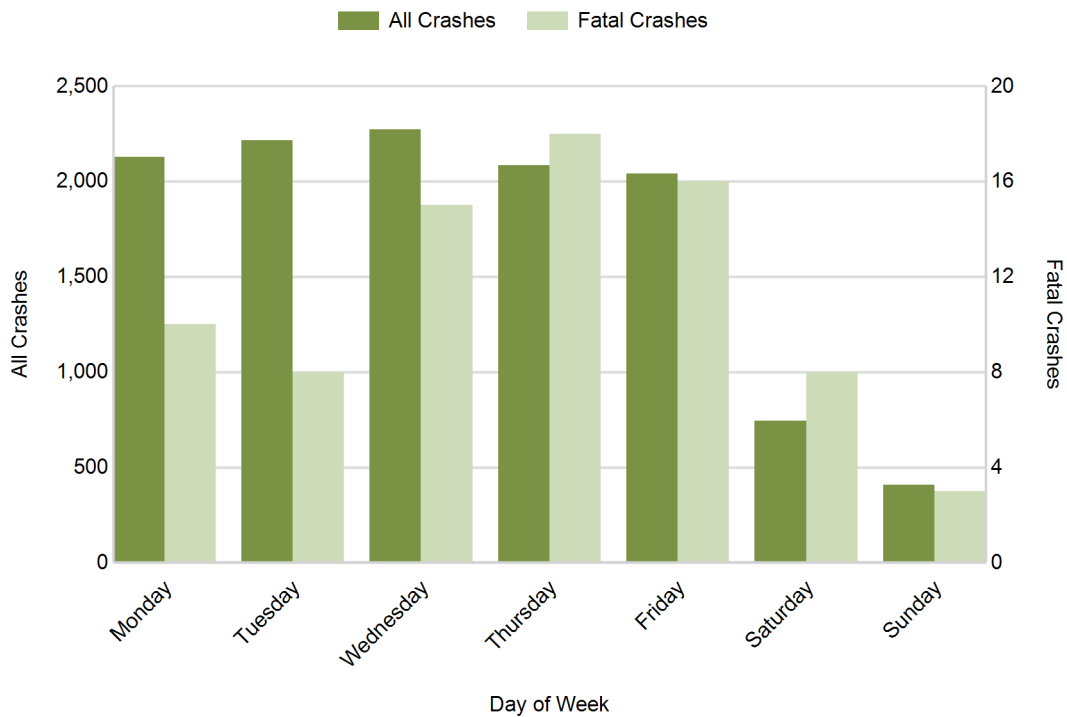
2015 Crashes by Month



2015 - Crashes by Day of Week

Day	All Crashes		Fatal Crashes		Injury Crashes			PDO Crashes
	Number	% of Total	Number	% of Fatal	A	B	C	Number
Monday	2,127	17.9	10	12.8	39	81	220	1,777
Tuesday	2,216	18.6	8	10.3	36	86	261	1,825
Wednesday	2,272	19.1	15	19.2	33	107	234	1,883
Thursday	2,084	17.5	18	23.1	26	101	231	1,708
Friday	2,041	17.2	16	20.5	31	79	229	1,686
Saturday	743	6.2	8	10.3	23	37	83	592
Sunday	407	3.4	3	3.8	15	32	47	310
Total	11,890	100.0	78	100.0	203	523	1,305	9,781

2015 Day of Week and Severity

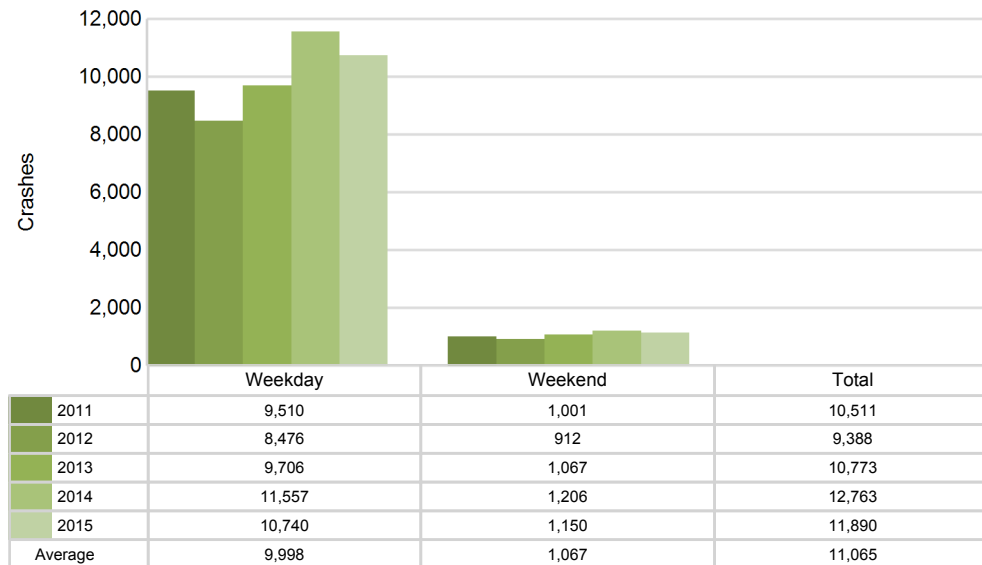


Commercial Motor Vehicles (continued)

5-Year Trend - Crashes by Weekday and Weekend

Portion of Week	2011		2012		2013		2014		2015	
	Total Crashes	Fatal Crashes	Total Crashes	Fatal Crashes	Total Crashes	Fatal Crashes	Total Crashes	Fatal Crashes	Total Crashes	Fatal Crashes
Weekday	9,510	58	8,476	64	9,706	70	11,557	81	10,740	67
Weekend	1,001	11	912	10	1,067	10	1,206	13	1,150	11
Total	10,511	69	9,388	74	10,773	80	12,763	94	11,890	78

5-Year Crash Trends by Weekday (Monday - Friday) and Weekend (Saturday & Sunday)



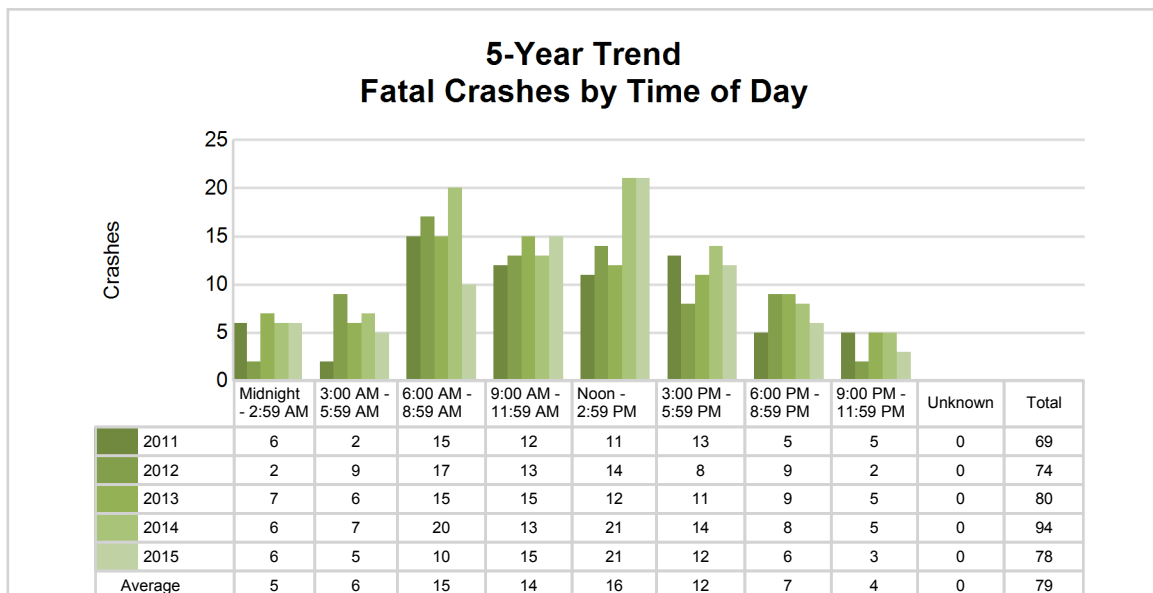
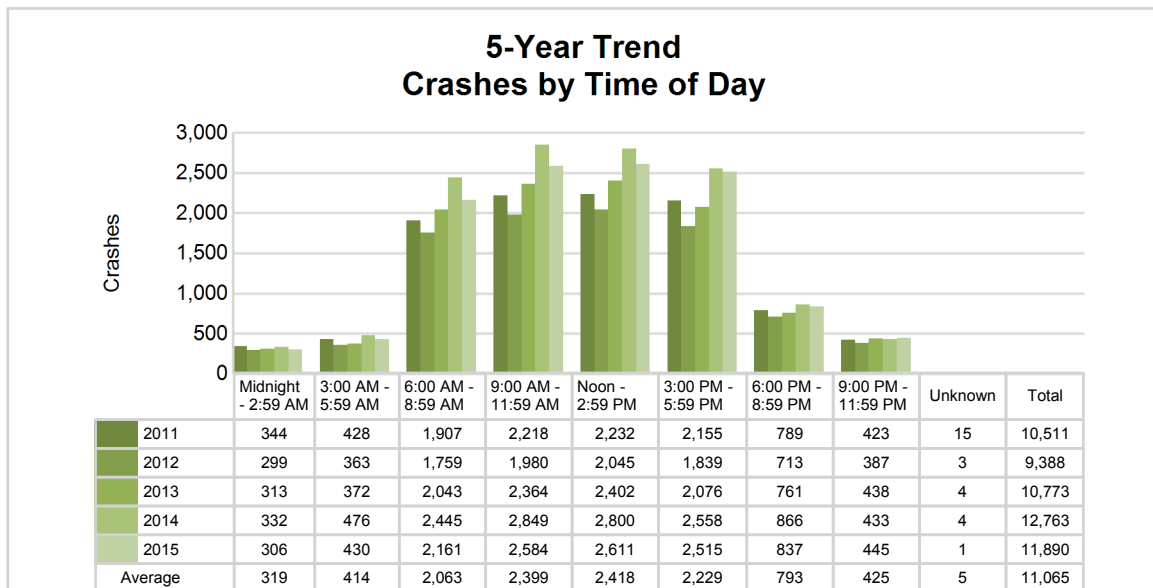
Commercial Motor Vehicles (continued)

5

5-Year Trend - Crashes by Time of Day

Time of Day	2011		2012		2013		2014		2015	
	Total Crashes	Fatal Crashes	Total Crashes	Fatal Crashes	Total Crashes	Fatal Crashes	Total Crashes	Fatal Crashes	Total Crashes	Fatal Crashes
Midnight - 2:59 AM	344	6	299	2	313	7	332	6	306	6
3:00 AM - 5:59 AM	428	2	363	9	372	6	476	7	430	5
6:00 AM - 8:59 AM	1,907	15	1,759	17	2,043	15	2,445	20	2,161	10
9:00 AM - 11:59 AM	2,218	12	1,980	13	2,364	15	2,849	13	2,584	15
Noon - 2:59 PM	2,232	11	2,045	14	2,402	12	2,800	21	2,611	21
3:00 PM - 5:59 PM	2,155	13	1,839	8	2,076	11	2,558	14	2,515	12
6:00 PM - 8:59 PM	789	5	713	9	761	9	866	8	837	6
9:00 PM - 11:59 PM	423	5	387	2	438	5	433	5	445	3
Unknown	15	0	3	0	4	0	4	0	1	0
Total	10,511	69	9,388	74	10,773	80	12,763	94	11,890	78

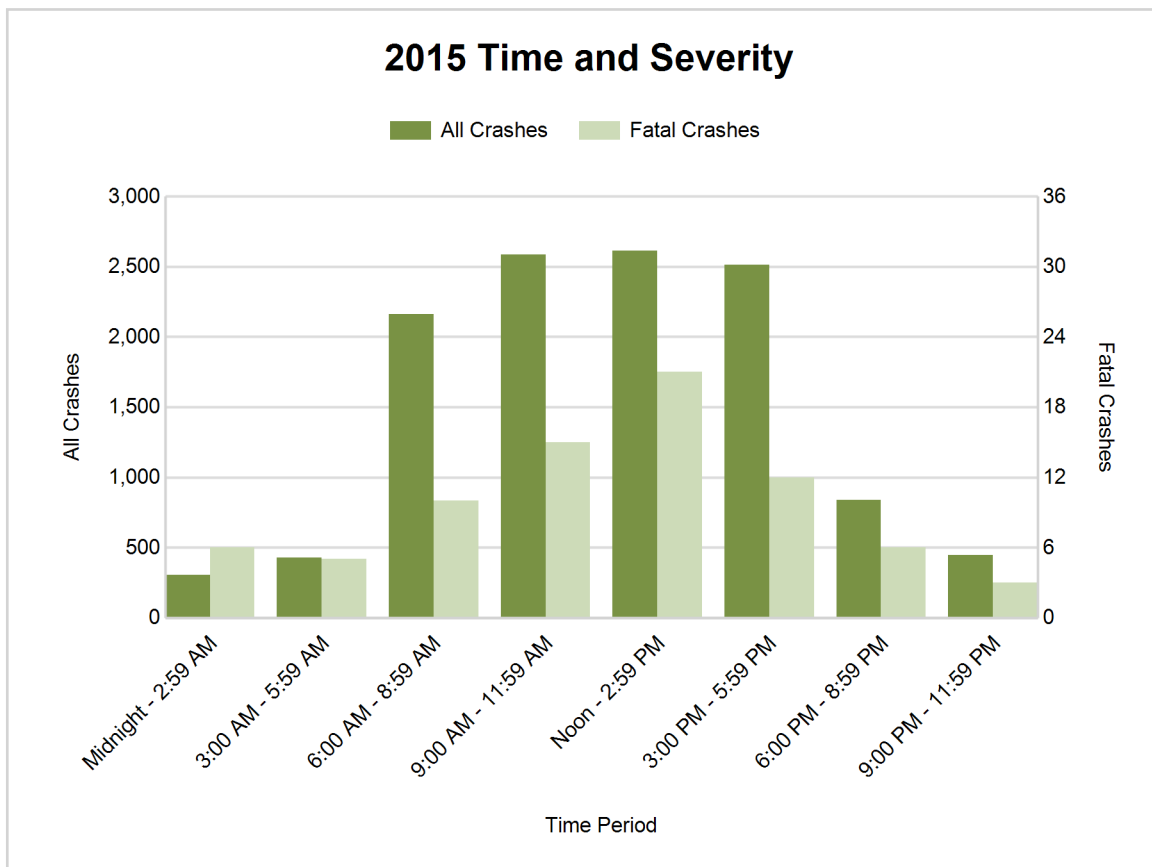
Note: † Indicates that the highest number of total crashes reported in the 5-year period occurred in the same time period



Commercial Motor Vehicles (continued)

2015 - Time and Severity

Time of Day	All Crashes		Fatal Crashes		Injury Crashes			PDO Crashes
	Number	% of Total	Number	% of Fatal	A	B	C	Number
Midnight - 2:59 AM	306	2.6	6	7.7	8	18	32	242
3:00 AM - 5:59 AM	430	3.6	5	6.4	13	24	40	348
6:00 AM - 8:59 AM	2,161	18.2	10	12.8	28	94	244	1,785
9:00 AM - 11:59 AM	2,584	21.7	15	19.2	54	109	261	2,145
Noon - 2:59 PM	2,611	22.0	21	26.9	38	110	311	2,131
3:00 PM - 5:59 PM	2,515	21.2	12	15.4	39	95	267	2,102
6:00 PM - 8:59 PM	837	7.0	6	7.7	13	41	97	680
9:00 PM - 11:59 PM	445	3.7	3	3.8	10	32	53	347
Unknown	1	0.0	0	0.0	0	0	0	1
Total	11,890	100.0	78	100.0	203	523	1,305	9,781

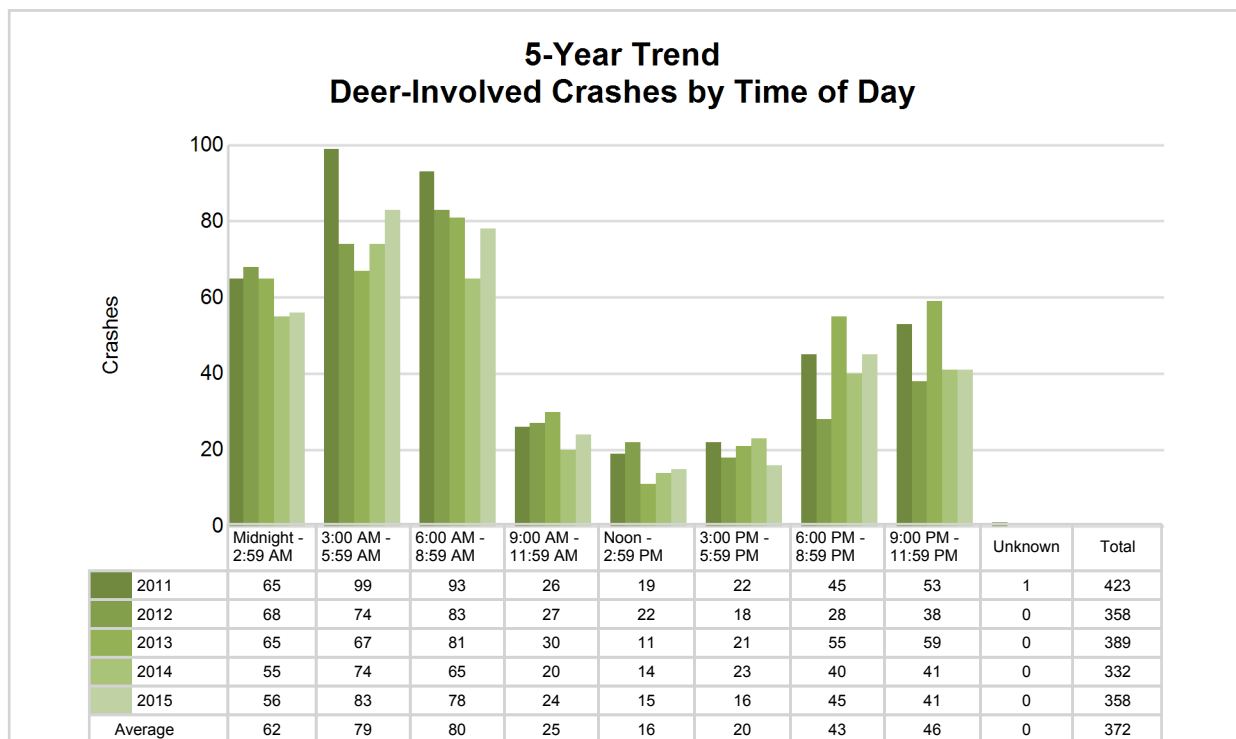


Commercial Motor Vehicles (continued)

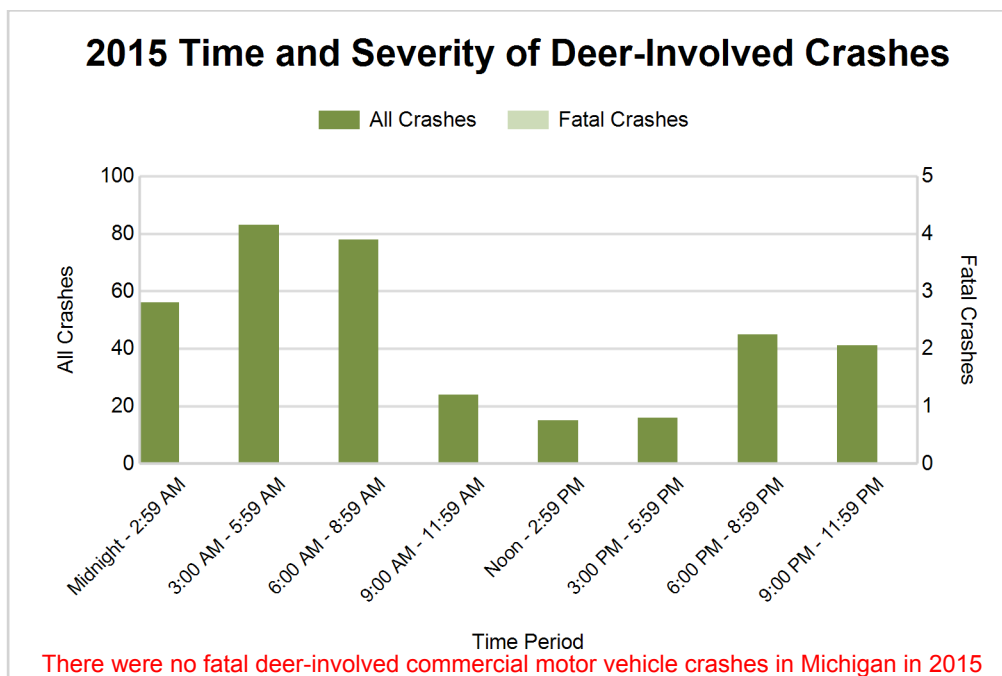
5-Year Trend - Deer-Involved Crashes by Time of Day

Time of Day	2011		2012		2013		2014		2015	
	Total Crashes	Fatal Crashes	Total Crashes	Fatal Crashes	Total Crashes	Fatal Crashes	Total Crashes	Fatal Crashes	Total Crashes	Fatal Crashes
Midnight - 2:59 AM	65	0	68	0	65	0	55	0	56	0
3:00 AM - 5:59 AM	99	0	74	0	67	0	74	0	83	0
6:00 AM - 8:59 AM	93	0	83	0	81	0	65	0	78	0
9:00 AM - 11:59 AM	26	0	27	0	30	0	20	0	24	0
Noon - 2:59 PM	19	0	22	0	11	0	14	0	15	0
3:00 PM - 5:59 PM	22	0	18	0	21	0	23	0	16	0
6:00 PM - 8:59 PM	45	0	28	0	55	0	40	0	45	0
9:00 PM - 11:59 PM	53	0	38	0	59	0	41	0	41	0
Unknown	1	0	0	0	0	0	0	0	0	0
Total	423	0	358	0	389	0	332	0	358	0

Note: † Indicates that the highest number of total crashes reported in the 5-year period occurred in the same time period



Commercial Motor Vehicles (continued)



2015 - Reported Motor Vehicle Crashes by County

County	Crashes											Persons	
	Total	Fatal	Injury	Property Damage	Inter-state	US Route	State Route	Local Street	Alcohol-Involved	Drug-Involved	Deer-Involved	Fatalities	Injuries
Alcona	6	0	1	5	0	2	3	1	0	0	2	0	1
Alger	6	0	2	4	0	1	4	1	0	0	0	0	3
Allegan	181	1	35	145	55	41	38	47	3	0	16	1	38
Alpena	21	1	1	19	0	6	5	10	1	0	1	1	2
Antrim	14	1	2	11	0	7	4	3	0	0	2	1	9
Arenac	12	0	2	10	2	7	2	1	1	0	3	0	2
Baraga	8	0	2	6	0	6	1	1	0	0	0	0	3
Barry	36	1	6	29	0	0	14	22	0	1	1	1	9
Bay	75	1	18	56	12	3	26	34	0	0	0	1	27
Benzie	11	0	6	5	0	4	2	5	0	0	1	0	7
Berrien	333	1	61	271	216	26	31	60	8	3	17	1	85
Branch	62	1	5	56	18	20	7	17	0	0	16	1	8
Calhoun	233	1	45	187	138	0	39	56	5	1	18	1	62
Cass	58	2	12	44	0	3	28	27	2	1	3	2	23
Charlevoix	29	0	2	27	0	8	10	11	0	0	3	0	3
Cheboygan	19	0	5	14	8	1	5	5	0	0	2	0	5
Chippewa	27	1	6	20	8	0	8	11	0	0	1	1	16
Clare	25	0	8	17	0	13	4	8	0	0	3	0	11
Clinton	89	0	19	70	32	14	13	30	0	1	10	0	23
Crawford	11	0	2	9	4	0	4	3	1	0	1	0	3
Delta	39	0	5	34	0	18	11	10	2	1	3	0	7
Dickinson	20	0	6	14	0	9	7	4	0	0	3	0	8
Eaton	126	0	23	103	59	0	30	37	2	0	11	0	32

Commercial Motor Vehicles (continued)

2015 - Reported Motor Vehicle Crashes by County (continued)

County	Crashes											Persons	
	Total	Fatal	Injury	Property Damage	Inter-state	US Route	State Route	Local Street	Alcohol-Involved	Drug-Involved	Deer-Involved	Fatalities	Injuries
Emmet	28	1	4	23	0	9	3	16	0	0	3	1	9
Genesee	358	3	81	274	115	20	47	176	9	3	12	3	106
Gladwin	20	0	2	18	0	0	7	13	0	0	1	0	2
Gogebic	9	0	2	7	0	3	1	5	0	0	1	0	2
Grand Traverse	121	2	11	108	0	45	23	53	1	1	8	2	20
Gratiot	37	1	9	27	0	10	15	12	0	0	4	1	13
Hillsdale	45	0	7	38	0	12	15	18	1	0	4	0	9
Houghton	28	1	2	25	0	13	9	6	0	0	1	1	2
Huron	32	0	9	23	0	0	16	16	1	0	6	0	10
Ingham	314	1	49	264	73	19	62	160	5	0	11	1	66
Ionia	70	0	8	62	38	0	14	18	1	1	3	0	13
Iosco	12	0	2	10	0	2	5	5	0	0	2	0	2
Iron	9	0	2	7	0	2	2	5	0	0	1	0	2
Isabella	60	1	5	54	0	16	13	31	0	1	4	1	17
Jackson	167	0	31	136	85	12	23	47	1	0	6	0	43
Kalamazoo	352	4	53	295	111	35	35	171	4	1	9	5	106
Kalkaska	16	0	2	14	0	5	3	8	0	0	0	0	2
Kent	905	4	139	762	138	131	162	474	13	2	5	4	159
Keweenaw	0	0	0	0	0	0	0	0	0	0	0	0	0
Lake	12	0	3	9	0	8	0	4	0	0	2	0	7
Lapeer	102	0	12	90	17	0	35	50	1	0	11	0	18
Leelanau	14	0	1	13	0	0	7	7	1	0	1	0	1
Lenawee	81	1	18	62	0	29	18	34	1	2	5	1	24
Livingston	210	1	32	177	72	37	20	81	3	1	7	1	46
Luce	5	0	2	3	0	0	4	1	0	0	0	0	2
Mackinac	15	0	3	12	4	6	3	2	1	0	5	0	3
Macomb	1,007	1	174	832	159	0	277	571	9	10	3	2	231
Manistee	20	0	1	19	0	9	1	10	0	0	5	0	3
Marquette	52	1	11	40	0	19	7	26	0	0	2	1	22
Mason	27	0	3	24	0	17	1	9	1	1	3	0	4

Commercial Motor Vehicles (continued)

2015 - Reported Motor Vehicle Crashes by County (continued)

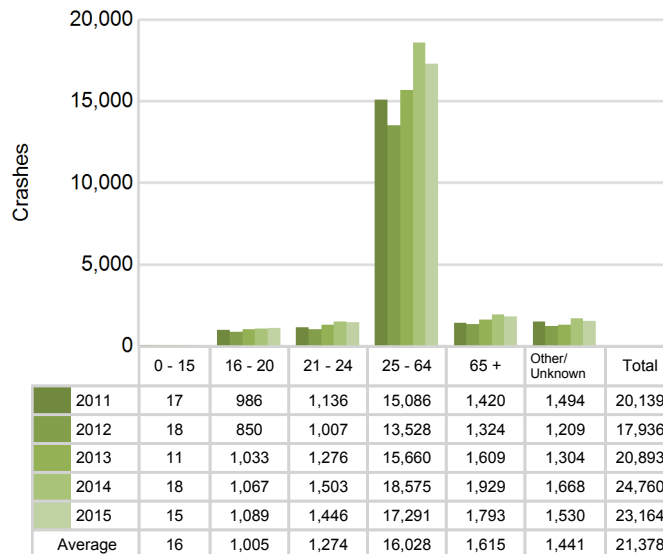
County	Crashes											Persons	
	Total	Fatal	Injury	Property Damage	Inter-state	US Route	State Route	Local Street	Alcohol-Involved	Drug-Involved	Deer-Involved	Fatalities	Injuries
Mecosta	43	1	2	40	0	11	22	10	2	0	3	1	3
Menominee	19	0	4	15	0	11	4	4	2	1	0	0	6
Midland	47	0	8	39	0	12	10	25	0	0	3	0	8
Missaukee	15	1	2	12	0	0	12	3	0	0	2	1	5
Monroe	303	3	42	258	173	54	13	63	3	2	1	3	55
Montcalm	44	0	5	39	0	5	20	19	1	0	6	0	8
Montmorency	9	0	0	9	0	0	3	6	0	0	1	0	0
Muskegon	127	0	26	101	1	34	16	76	4	0	0	0	42
Newaygo	28	0	3	25	0	0	14	14	0	0	3	0	3
Oakland	1,385	6	234	1,145	360	110	209	706	18	9	6	8	303
Oceana	16	0	1	15	0	6	1	9	0	0	3	0	1
Ogemaw	20	1	7	12	2	0	10	8	1	0	2	1	11
Ontonagon	5	0	0	5	0	2	2	1	0	0	1	0	0
Osceola	21	0	4	17	0	14	4	3	0	0	6	0	4
Oscoda	8	0	3	5	0	0	6	2	0	0	1	0	3
Otsego	30	1	6	23	8	0	6	16	0	1	2	1	10
Ottawa	347	1	50	296	50	64	27	206	7	1	6	1	66
Presque Isle	4	0	1	3	0	0	1	3	0	0	1	0	1
Roscommon	15	0	2	13	1	1	9	4	0	0	1	0	6
Saginaw	145	1	29	115	28	0	49	68	3	0	3	2	38
St. Clair	159	1	18	140	61	0	24	74	0	1	5	1	24
St. Joseph	74	1	16	57	0	35	22	17	1	2	3	1	22
Sanilac	42	1	11	30	0	0	21	21	1	2	13	1	16
Schoolcraft	10	0	1	9	0	4	2	4	1	0	6	0	1
Shiawassee	59	0	13	46	25	0	18	16	2	0	9	0	20
Tuscola	29	1	4	24	0	0	12	17	0	0	0	1	7
Van Buren	180	3	33	144	126	0	22	32	2	2	14	3	55
Washtenaw	521	2	85	434	104	110	31	276	5	5	10	2	141
Wayne	2,568	19	461	2,088	891	150	358	1,169	29	18	3	21	698
Wexford	48	2	8	38	0	19	11	18	0	0	2	2	13
Total	11,890	78	2,031	9,781	3,194	1,290	2,083	5,323	160	75	358	85	2,901

Commercial Motor Vehicles (continued)

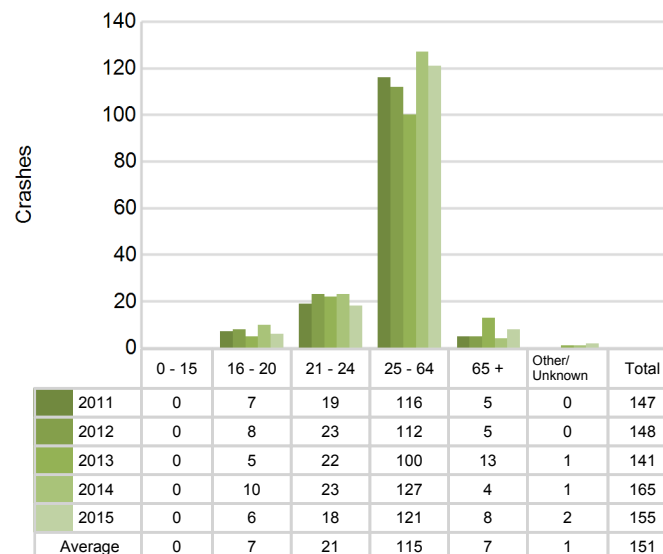
5-Year Trend - Drivers in Crashes Coded Drinking by Driver Age

Driver Age	2011		2012		2013		2014		2015	
	Total Drivers in Crashes	Total Drivers Coded Drinking	Total Drivers in Crashes	Total Drivers Coded Drinking	Total Drivers in Crashes	Total Drivers Coded Drinking	Total Drivers in Crashes	Total Drivers Coded Drinking	Total Drivers in Crashes	Total Drivers Coded Drinking
0 - 15	17	0	18	0	11	0	18	0	15	0
16 - 20	986	7	850	8	1,033	5	1,067	10	1,089	6
21 - 24	1,136	19	1,007	23	1,276	22	1,503	23	1,446	18
25 - 64	15,086	116	13,528	112	15,660	100	18,575	127	17,291	121
65 +	1,420	5	1,324	5	1,609	13	1,929	4	1,793	8
Unknown	1,494	0	1,209	0	1,304	1	1,668	1	1,530	2
Total	20,139	147	17,936	148	20,893	141	24,760	165	23,164	155

5-Year Trend Total Drivers in Crashes by Age



5-Year Trend Total Drivers Coded Drinking by Age



Commercial Motor Vehicles (continued)

2015 - Bodily Alcohol Concentration (BAC) Results Among All Vehicle Drivers in Alcohol-Involved Crashes by Age

Age Group	Drivers				BAC Result Range for Drivers Coded Drinking				
	Total Drivers in Alcohol-Involved Crashes	Total Drivers Tested in all Crashes	Total Drivers Coded Drinking, Tested	Total Drivers Coded Drinking	BAC = 0.00	BAC 0.01 g/dL to 0.07 g/dL	BAC 0.08 g/dL to 0.16 g/dL	BAC 0.17 g/dL and Above	BAC Not Reported
0 - 15	0	0	0	0	0	0	0	0	0
16 - 20	9	16	5	6	0	0	3	2	1
21 - 24	22	29	17	18	0	1	6	4	7
25 - 64	253	305	89	121	4	14	19	32	52
65 +	17	32	8	8	1	0	3	2	2
Unknown	17	1	0	2	0	0	0	0	2
Total	318	383	119	155	5	15	31	40	64

Notes: BAC measured in grams (g) per deciliter (dL).

BAC may not be reported if drivers are not tested or if the results are not available immediately (as in the case of a blood test).

A driver may be coded by the officer as drinking even though no test is administered.

Alcohol-Involved Crashes

In 2015, there were 318 drivers in alcohol-involved crashes; 155 (48.7%) of those drivers were coded as had-been-drinking by the officer on the crash form.

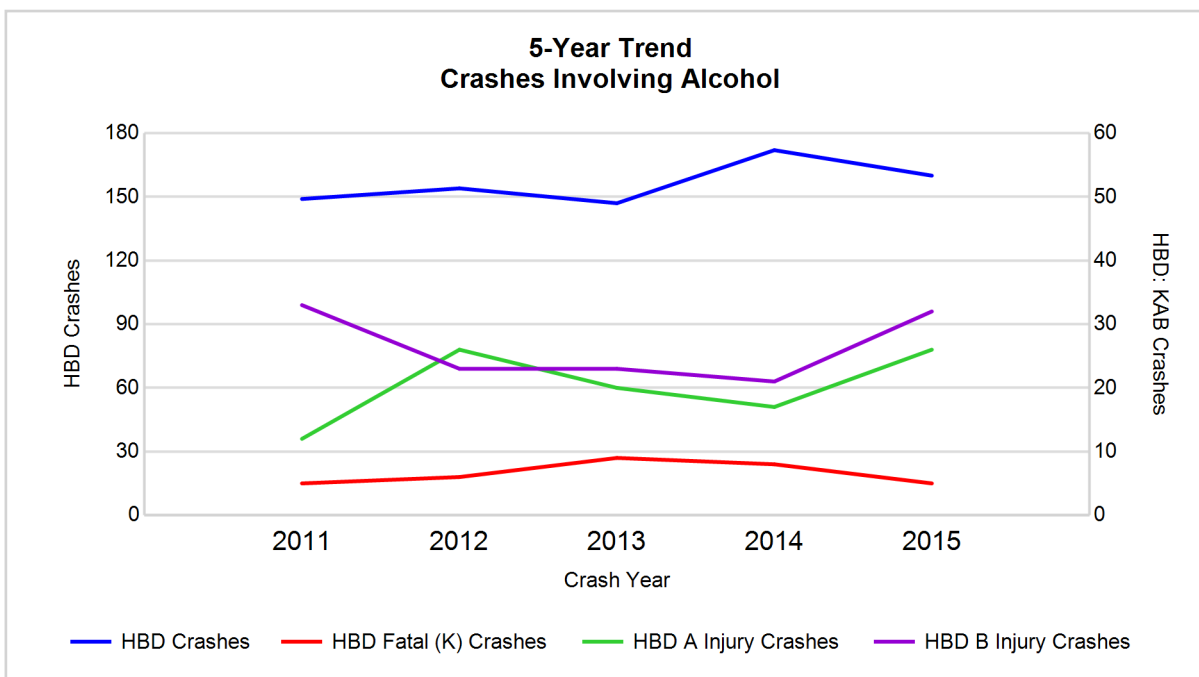
- 71 (45.8%) of the 155 drivers had a blood alcohol concentration (BAC) of 0.08 g/dL (grams per deciliter) or greater, and 40 (56.3%) of the 71 drivers had a BAC at or above 0.17 g/dL.
- 119 (76.8%) of the 155 drivers were coded as had-been-drinking and were tested for alcohol consumption.

5-Year Trend - Crashes Involving Alcohol

Year	All Crashes	HBD Crashes	% HBD	Fatal Crashes	HBD Fatal Crashes	% HBD	A Injury Crashes	HBD A Injury Crashes	% HBD	B Injury Crashes	HBD B Injury Crashes	% HBD
2011	10,511	149	1.4	69	5	7.2	213	12	5.6	447	33	7.4
2012	9,388	154	1.6	74	6	8.1	201	26	12.9	430	23	5.3
2013	10,773	147	1.4	80	9	11.3	228	20	8.8	479	23	4.8
2014	12,763	172	1.3	94	8	8.5	225	17	7.6	525	21	4.0
2015	11,890	160	1.3	78	5	6.4*	203	26	12.8	523	32	6.1

Note: * Indicates that the most recent year is the lowest number or percentage reported in the 5-year period in that column

** Indicates that the most recent year is the highest number or percentage reported in the 5-year period in that column



Note: Had-Been-Drinking (HBD)

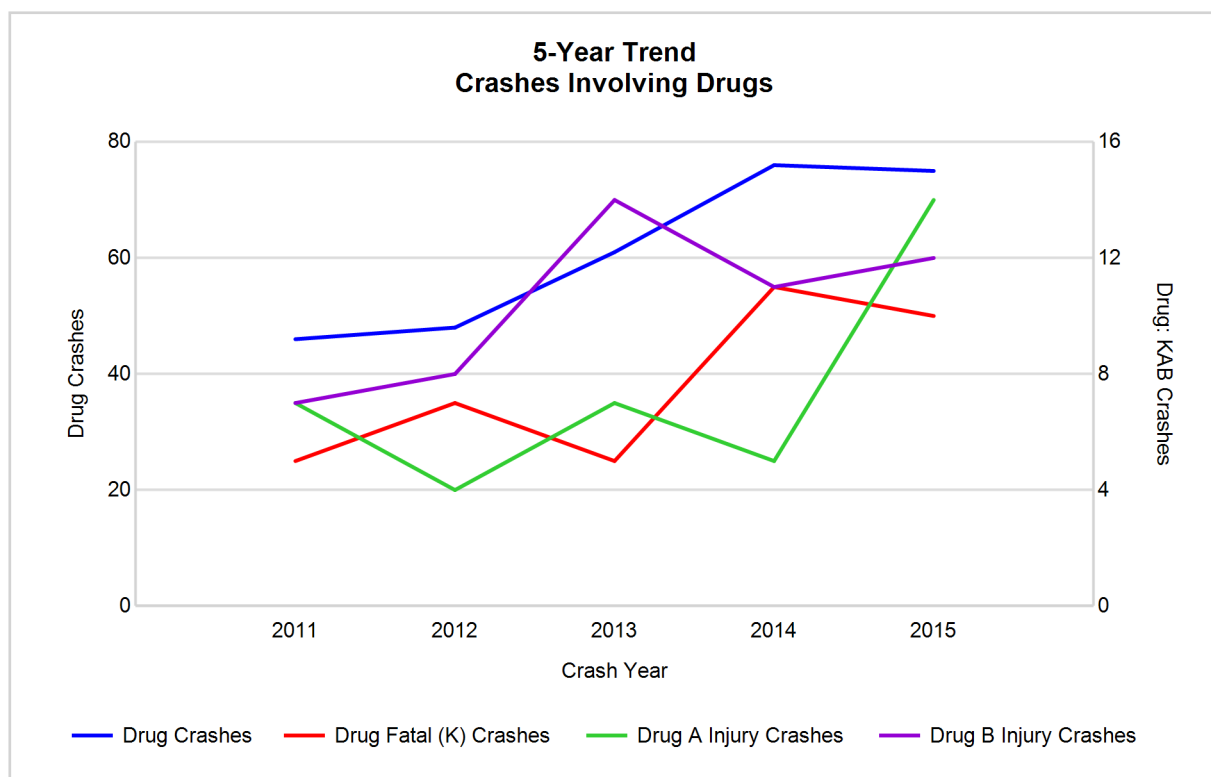
Commercial Motor Vehicles (continued)

5-Year Trend - Crashes Involving Drugs

Year	All Crashes	Drug Crashes	% Drug	Fatal Crashes	Drug Fatal Crashes	% Drug	A Injury Crashes	Drug A Injury Crashes	% Drug	B Injury Crashes	Drug B Injury Crashes	% Drug
2011	10,511	46	0.4	69	5	7.2	213	7	3.3	447	7	1.6
2012	9,388	48	0.5	74	7	9.5	201	4	2.0	430	8	1.9
2013	10,773	61	0.6	80	5	6.3	228	7	3.1	479	14	2.9
2014	12,763	76	0.6	94	11	11.7	225	5	2.2	525	11	2.1
2015	11,890	75	0.6	78	10	12.8**	203	14**	6.9**	523	12	2.3

Note: * Indicates that the most recent year is the lowest number or percentage reported in the 5-year period in that column

** Indicates that the most recent year is the highest number or percentage reported in the 5-year period in that column



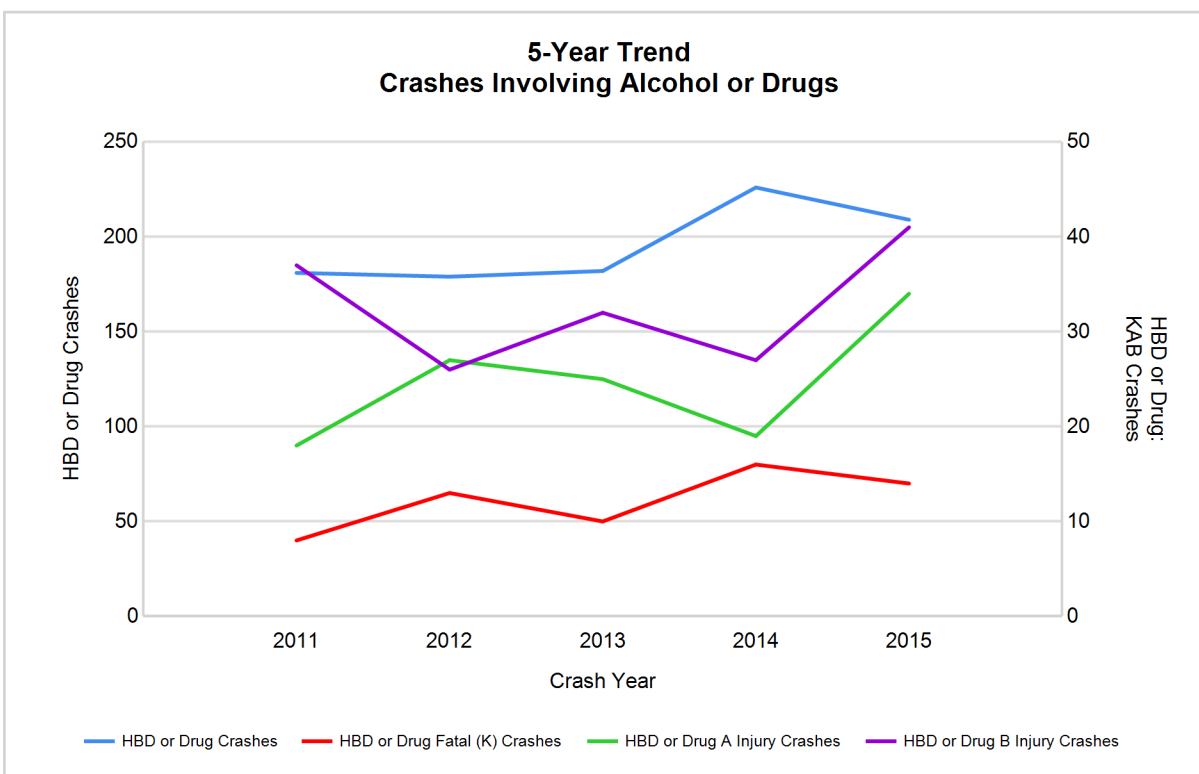
Commercial Motor Vehicles (continued)

5-Year Trend - Crashes Involving Alcohol or Drugs

Year	All Crashes	HBD or Drug Crashes	% HBD or Drug	Fatal Crashes	HBD or Drug Fatal Crashes	% HBD or Drug	A Injury Crashes	HBD or Drug A Injury Crashes	% HBD or Drug	B Injury Crashes	HBD or Drug B Injury Crashes	% HBD or Drug
2011	10,511	181	1.7	69	8	11.6	213	18	8.5	447	37	8.3
2012	9,388	179	1.9	74	13	17.6	201	27	13.4	430	26	6.0
2013	10,773	182	1.7	80	10	12.5	228	25	11.0	479	32	6.7
2014	12,763	226	1.8	94	16	17.0	225	19	8.4	525	27	5.1
2015	11,890	209	1.8	78	14	17.9**	203	34**	16.7**	523	41**	7.8

Note: * Indicates that the most recent year is the lowest number or percentage reported in the 5-year period in that column

** Indicates that the most recent year is the highest number or percentage reported in the 5-year period in that column



Note: Had-Been-Drinking (HBD)

2015 - Restraints Worn Among Vehicle Drivers and Injured Passengers by Vehicle Type

Vehicle Type	Total Occupants			Fatalities			A - Incapacitating			B - Non-incapacitating			C - Possible Injury			No Injury		
	Total	Used Restraint	%	Total	Used Restraint	%	Total	Used Restraint	%	Total	Used Restraint	%	Total	Used Restraint	%	Total	Used Restraint	%
Passenger car & station wagon	8,996	8,008	89.0	45	32	71.1	157	131	83.4	452	402	88.9	1,168	1,103	94.4	6,590	6,334	96.1
Van & motorhome	581	503	86.6	3	1	33.3	6	5	83.3	20	17	85.0	75	67	89.3	431	412	95.6
Pickup truck	1,273	1,073	84.3	7	5	71.4	30	19	63.3	61	55	90.2	121	111	91.7	933	882	94.5
Small truck under 10,000 lbs. GVWR	149	127	85.2	0	0	0.0	0	0	0.0	5	4	80.0	20	18	90.0	111	105	94.6
Cycle	35	25	71.4	9	7	77.8	9	6	66.7	7	6	85.7	3	2	66.7	6	4	66.7
Moped	3	0	0.0	1	0	0.0	0	0	0.0	1	0	0.0	1	0	0.0	0	0	0.0
Go Cart	1	0	0.0	0	0	0.0	0	0	0.0	0	0	0.0	0	0	0.0	0	0	0.0
Snowmobile	1	1	100.0	0	0	0.0	1	1	100.0	0	0	0.0	0	0	0.0	0	0	0.0
Off-Road Vehicle (ORV) & All-Terrain Vehicle (ATV)	1	0	0.0	0	0	0.0	0	0	0.0	0	0	0.0	1	0	0.0	0	0	0.0
Other	67	34	50.7	0	0	0.0	0	0	0.0	2	2	100.0	3	1	33.3	40	31	77.5
Truck/bus over 10,000 lbs.	12,757	11,492	90.1	11	4	36.4	54	29	53.7	156	106	67.9	504	311	61.7	11,557	11,040	95.5
Unknown	123	2	1.6	0	0	0.0	0	0	0.0	0	0	0.0	1	1	100.0	7	1	14.3
Total	23,987	21,265	88.7	76	49	64.5	257	191	74.3	704	592	84.1	1,897	1,614	85.1	19,675	18,809	95.6

Note: Restraint Use includes shoulder belt only used, lap belt only used, both lap and shoulder belts used, child restraint used, restraint failure, and helmet worn.

2015 - Restraints Worn Among Vehicle Drivers and Injured Passengers by Age

Age Group	Total Occupants			Fatalities			A - Incapacitating			B - Non-incapacitating			C - Possible Injury			No Injury		
	Total	Used Restraint	%	Total	Used Restraint	%	Total	Used Restraint	%	Total	Used Restraint	%	Total	Used Restraint	%	Total	Used Restraint	%
0 - 15	232	131	56.5	1	1	100.0	8	3	37.5	54	30	55.6	153	84	54.9	12	11	91.7
16 - 20	1,186	1,115	94.0	7	5	71.4	23	14	60.9	78	63	80.8	182	166	91.2	894	867	97.0
21 - 24	1,526	1,434	94.0	1	1	100.0	20	13	65.0	66	53	80.3	164	140	85.4	1,273	1,227	96.4
25 - 64	17,658	16,786	95.1	45	27	60.0	169	128	75.7	431	374	86.8	1,264	1,099	86.9	15,731	15,156	96.3
65 +	1,853	1,763	95.1	22	15	68.2	37	33	89.2	75	72	96.0	133	125	94.0	1,582	1,517	95.9
Unknown	1,532	36	2.3	0	0	0.0	0	0	0.0	0	0	0.0	1	0	0.0	183	31	16.9
Total	23,987	21,265	88.7	76	49	64.5	257	191	74.3	704	592	84.1	1,897	1,614	85.1	19,675	18,809	95.6

Note: Restraint Use includes shoulder belt only used, lap belt only used, both lap and shoulder belts used, child restraint used, restraint failure, and helmet worn.

Commercial Motor Vehicles (continued)

5-Year Trend - Restraint Use Among Drivers

Restraint Use	2011			2012			2013			2014			2015		
	Drivers	Fatal Drivers	Injured Drivers	Drivers	Fatal Drivers	Injured Drivers	Drivers	Fatal Drivers	Injured Drivers	Drivers	Fatal Drivers	Injured Drivers	Drivers	Fatal Drivers	Injured Drivers
No belts available	116	0	11	118	1	11	102	2	12	108	1	7	91	2	9
Shoulder belt only used	32	0	3	27	0	3	36	2	3	43	0	4	42	0	4
Lap belt only used	223	0	9	185	0	19	207	0	7	231	0	18	202	1	10
Both lap & shoulder belts used	17,479	34	1,609	15,817	31	1,508	18,499	44	1,734	21,912	41	1,986	20,504	32	1,895
No belts used	220	11	68	166	12	48	210	10	53	239	12	73	202	14	54
Child restraint used	3	0	0	1	0	0	0	0	0	0	0	0	0	0	0
Child restraint not used, unavailable or improper use	1	0	0	1	0	0	1	0	0	3	0	0	0	0	0
Restraint failure	9	0	2	8	0	2	5	0	1	6	0	0	6	0	0
Restraint use unknown	1,022	3	61	863	13	52	999	9	71	1,120	9	66	1,110	5	62
Helmet worn	25	4	17	22	3	12	29	1	19	23	3	13	24	7	13
Helmet not worn	3	0	1	6	1	4	6	0	5	9	3	5	11	2	7
Helmet use unknown	3	0	0	1	1	0	5	0	0	1	1	0	2	1	1
Uncoded & errors	1,003	0	10	721	0	0	794	0	1	1,065	0	0	970	0	0
Total	20,139	52	1,791	17,936	62	1,659	20,893	68	1,906	24,760	70	2,172	23,164	64	2,055

5-Year Trend - Restraint Use Among Drivers Coded Drinking

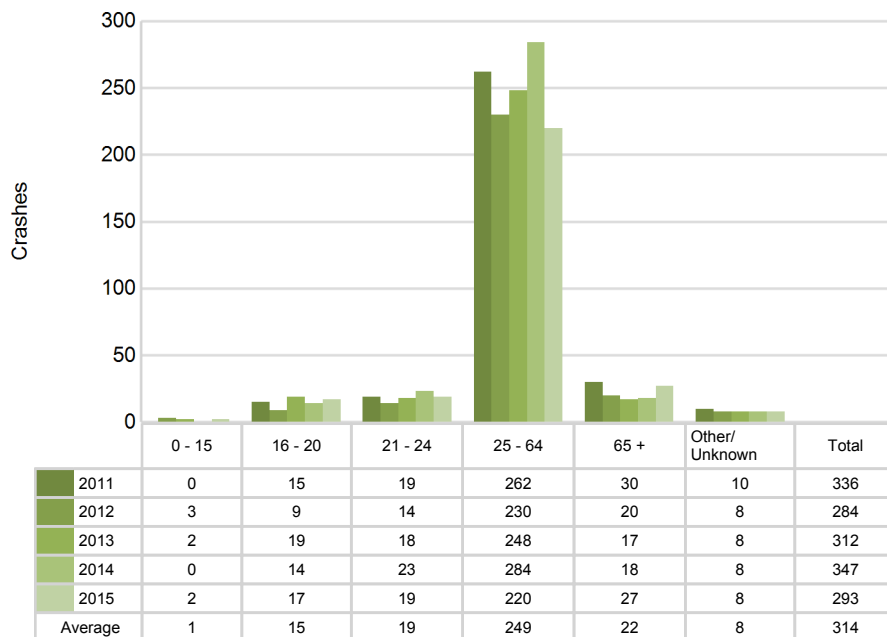
Restraint Use	2011			2012			2013			2014			2015		
	Drivers	Fatal Drivers	Injured Drivers	Drivers	Fatal Drivers	Injured Drivers	Drivers	Fatal Drivers	Injured Drivers	Drivers	Fatal Drivers	Injured Drivers	Drivers	Fatal Drivers	Injured Drivers
No belts available	0	0	0	1	0	0	0	0	0	0	0	0	1	0	1
Shoulder belt only used	0	0	0	0	0	0	0	0	0	0	0	0	0	0	0
Lap belt only used	1	0	1	0	0	0	1	0	1	1	0	1	0	0	0
Both lap & shoulder belts used	117	3	42	114	1	52	109	5	43	127	1	37	121	0	59
No belts used	9	1	8	10	3	5	11	1	6	14	2	10	11	0	8
Child restraint used	0	0	0	0	0	0	0	0	0	0	0	0	0	0	0
Child restraint not used, unavailable or improper use	0	0	0	0	0	0	0	0	0	0	0	0	0	0	0
Restraint failure	0	0	0	0	0	0	0	0	0	0	0	0	0	0	0
Restraint use unknown	17	0	8	22	0	9	17	0	7	23	0	6	21	0	9
Helmet worn	2	0	2	0	0	0	1	0	1	0	0	0	0	0	0
Helmet not worn	0	0	0	1	0	1	2	0	2	0	0	0	0	0	0
Helmet use unknown	0	0	0	0	0	0	0	0	0	0	0	0	0	0	0
Uncoded & errors	1	0	0	0	0	0	0	0	0	0	0	0	1	0	0
Total	147	4	61	148	4	67	141	6	60	165	3	54	155	0	77

5-Year Trend - Seatbelt Not Used Among Drivers by Age

Age Group	2011			2012			2013			2014			2015		
	Drivers	Fatal Drivers	Injured Drivers	Drivers	Fatal Drivers	Injured Drivers	Drivers	Fatal Drivers	Injured Drivers	Drivers	Fatal Drivers	Injured Drivers	Drivers	Fatal Drivers	Injured Drivers
0 - 15	0	0	0	3	0	1	2	0	0	0	0	0	2	0	1
16 - 20	15	0	7	9	0	4	19	1	6	14	0	5	17	2	5
21 - 24	19	1	4	14	0	7	18	0	5	23	2	12	19	0	8
25 - 64	262	7	59	230	11	38	248	9	51	284	9	59	220	9	47
65 +	30	3	9	20	2	8	17	2	3	18	2	4	27	5	2
Unknown	10	0	0	8	0	1	8	0	0	8	0	0	8	0	0
Total	336	11	79	284	13	59	312	12	65	347	13	80	293	16	63

Note: Seatbelt Not Used includes no belts available or no belts used.

5-Year Trend Driver Seatbelt Not Used



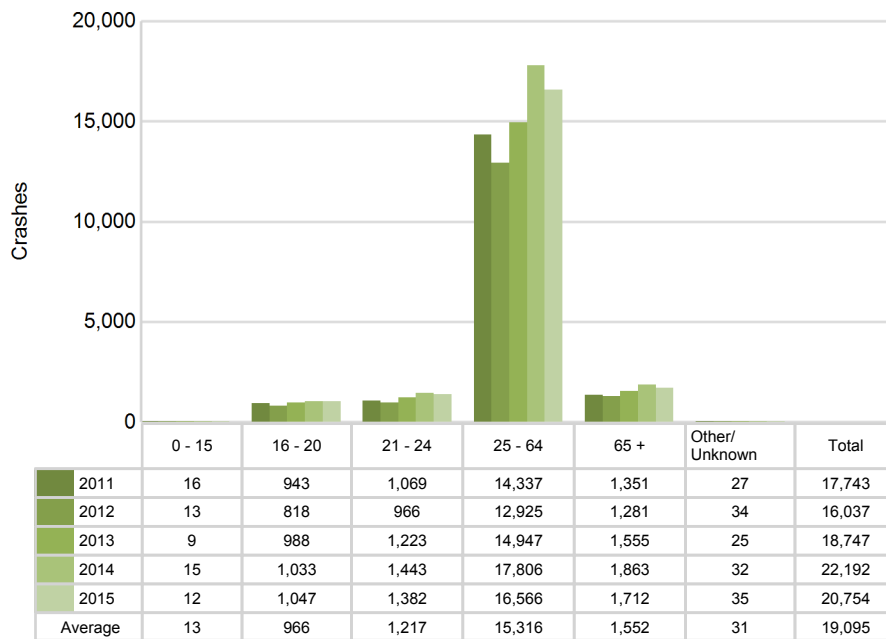
Commercial Motor Vehicles (continued)

5-Year Trend - Seatbelt Used Among Drivers by Age

Age Group	2011			2012			2013			2014			2015		
	Drivers	Fatal Drivers	Injured Drivers	Drivers	Fatal Drivers	Injured Drivers	Drivers	Fatal Drivers	Injured Drivers	Drivers	Fatal Drivers	Injured Drivers	Drivers	Fatal Drivers	Injured Drivers
0 - 15	16	0	0	13	0	0	9	0	0	15	1	4	12	0	1
16 - 20	943	4	156	818	1	138	988	5	151	1,033	5	189	1,047	5	175
21 - 24	1,069	1	126	966	6	141	1,223	1	172	1,443	3	161	1,382	1	154
25 - 64	14,337	21	1,184	12,925	15	1,102	14,947	27	1,247	17,806	20	1,447	16,566	19	1,393
65 +	1,351	8	157	1,281	9	151	1,555	13	174	1,863	12	206	1,712	8	186
Unknown	27	0	0	34	0	0	25	0	1	32	0	1	35	0	0
Total	17,743	34	1,623	16,037	31	1,532	18,747	46	1,745	22,192	41	2,008	20,754	33	1,909

Note: Seatbelt Used includes shoulder belt only used, lap belt only used, both lap and shoulder belts used, and restraint failure.

5-Year Trend Driver Seatbelt Used





The picture above represents all 2015 alcohol-involved commercial motor vehicle fatal crashes in Michigan.

In 2015, there were 160 alcohol-involved commercial motor vehicle crashes in Michigan:

- 5 K - Fatal Crashes
- 26 A - Incapacitating Injury Crashes
- 32 B - Non-incapacitating Injury Crashes
- 28 C - Possible Injury Crashes
- 69 O - Property Damage Only/No Injury Crashes

Office of Highway Safety Planning

Physical Address:
7150 Harris Drive
Dimondale, Michigan 48821

Mailing Address:
P.O. Box 30634
Lansing, Michigan 48909

Phone: (517) 284-3140
Fax: (517) 284-3151

Find us on the web:
MichiganTrafficCrashFacts.org

