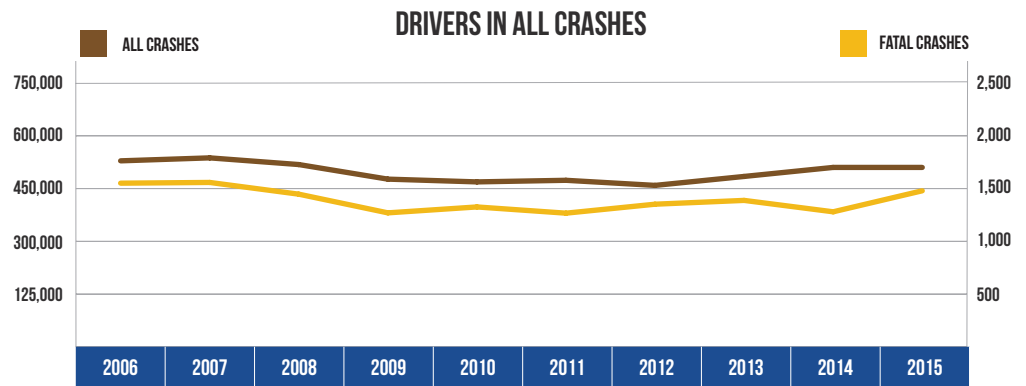


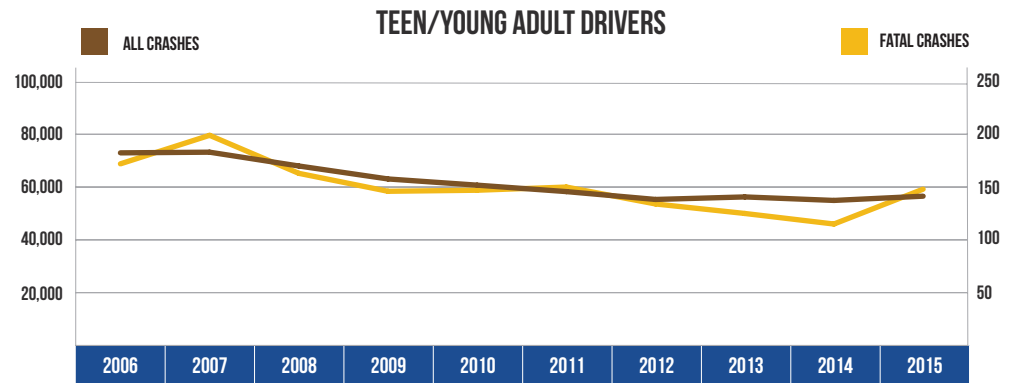
## 10 YEAR TRENDS-STATEWIDE (CONTINUED)

ALL CRASHES		
Year	All Crashes	Fatal Crashes
2006	528,763	1,551
2007	537,228	1,558
2008	518,240	1,447
2009	476,801	1,270
2010	468,968	1,326
2011	473,501	1,267
2012	459,030	1,352
2013	484,446	1,388
2014	510,086	1,280
2015	510,074	1,479



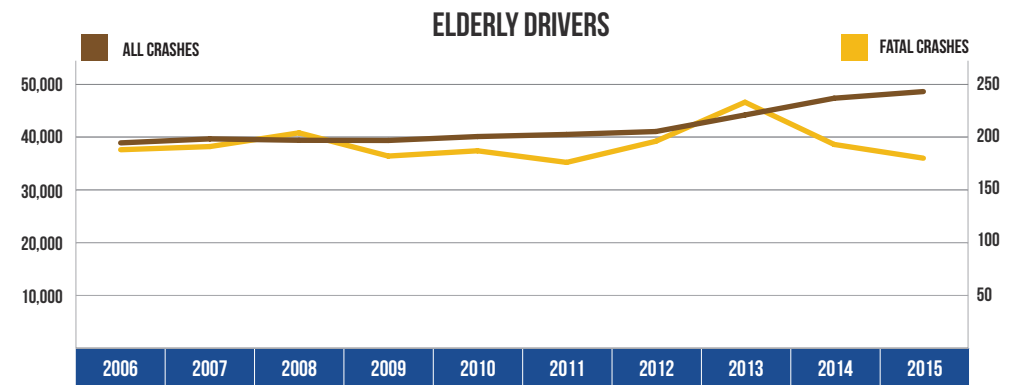
The number of drivers involved in all crashes decreased 3.5 percent over the 10-year period. The number of drivers involved in fatal crashes decreased 4.6 percent over the 10-year period.

TEEN/YOUNG ADULT DRIVERS (AGE 16-20)		
Year	All Crashes	Fatal Crashes
2006	72,957	172
2007	73,210	199
2008	67,982	163
2009	63,069	146
2010	60,721	147
2011	58,279	150
2012	55,307	134
2013	56,264	125
2014	54,935	115
2015	56,544	148



Teen/young adult drivers (age 16-20) represented 6.6 percent of the licensed drivers in 2015. The number of teen/young adult drivers in all crashes has decreased by 22.5 percent since 2006. Their involvement in fatal crashes has decreased 14.0 percent during the same time period.

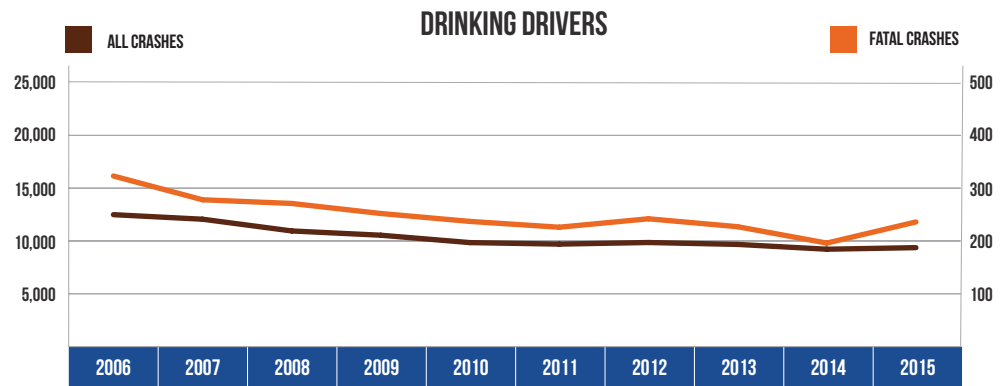
ELDERLY DRIVERS (AGE 65 & OVER)		
Year	All Crashes	Fatal Crashes
2006	38,899	188
2007	39,656	191
2008	39,388	204
2009	39,357	182
2010	40,096	187
2011	40,495	176
2012	41,047	196
2013	44,183	233
2014	47,356	193
2015	48,615	180



Elderly drivers (age 65 and over) represented 19.4 percent in 2015. The number of drivers age 65 and over in all crashes has increased 25.0 percent since 2006. Elderly driver involvement in fatal crashes decreased 4.3 percent during the same time period.

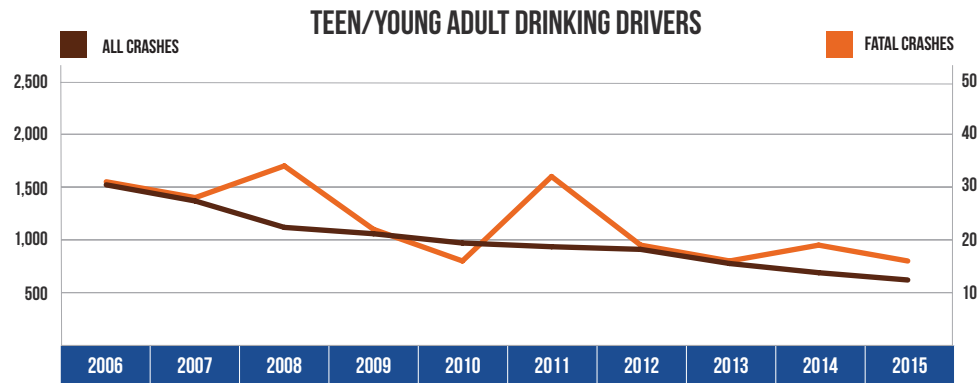
## 10 YEAR TRENDS-STATEWIDE (CONTINUED)

DRINKING DRIVERS		
Year	All Crashes	Fatal Crashes
2006	12,489	323
2007	12,059	278
2008	10,948	271
2009	10,542	252
2010	9,843	237
2011	9,701	226
2012	9,853	242
2013	9,673	227
2014	9,218	196
2015	9,368	236



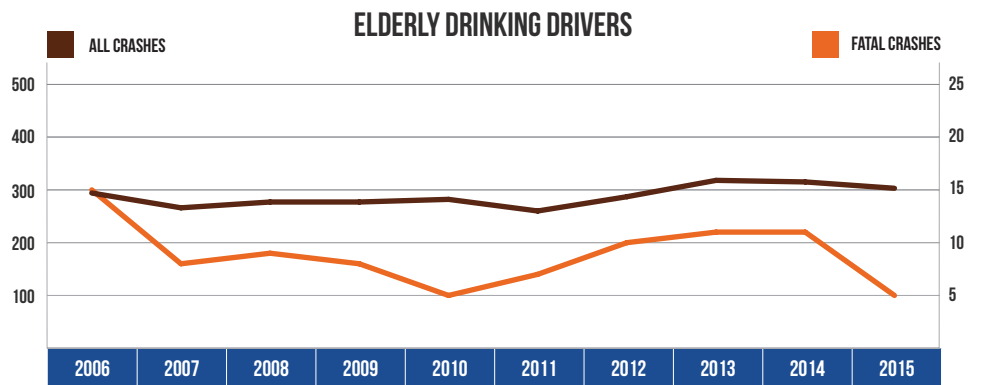
Drinking driver involvement in all crashes decreased by 25.0 percent from 2006. Drinking driver involvement in fatal crashes decreased by 27.0 percent from 2006.

TEEN/YOUNG ADULT DRINKING DRIVERS (AGE 16-20)		
Year	All Crashes	Fatal Crashes
2006	1,521	31
2007	1,368	28
2008	1,118	34
2009	1,058	22
2010	970	16
2011	935	32
2012	910	19
2013	776	16
2014	689	19
2015	621	16



The number of teen/young adult drinking drivers (age 16-20) in all crashes decreased by 59.2 percent, and their involvement in fatal crashes decreased by 48.4 percent from 2006.

ELDERLY DRINKING DRIVERS (AGE 65 & OVER)		
Year	All Crashes	Fatal Crashes
2006	294	15
2007	266	8
2008	277	9
2009	277	8
2010	282	5
2011	269	7
2012	287	10
2013	318	11
2014	315	11
2015	303	5



The number of elderly drinking drivers (age 65 and over) in all crashes increased by 3.1 percent from 2006. Their involvement in fatal crashes decreased by 66.7 percent from 2006.