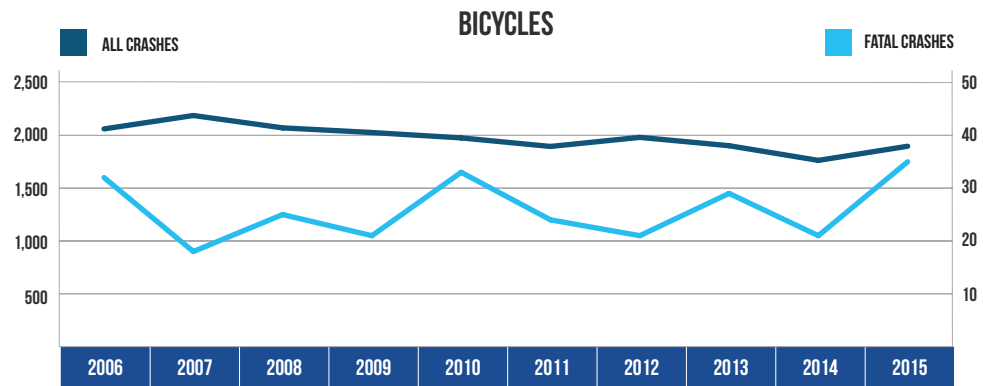


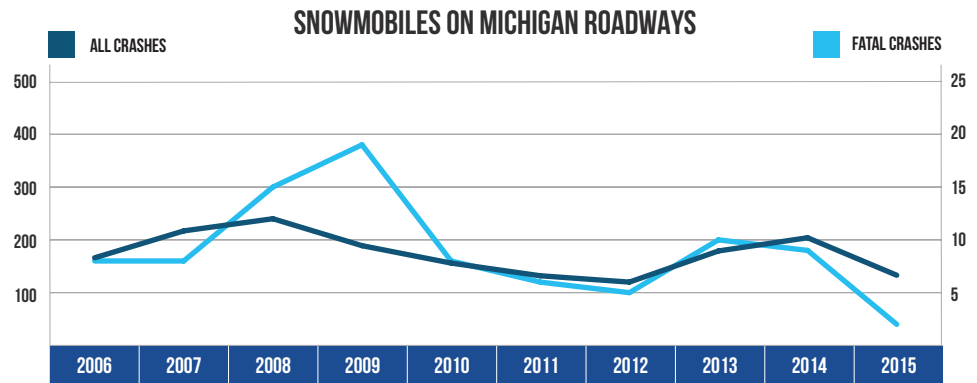
10 YEAR TRENDS-STATEWIDE (CONTINUED)

BICYCLES		
Year	All Crashes	Fatal Crashes
2006	2,061	32
2007	2,188	18
2008	2,071	25
2009	2,027	21
2010	1,976	33
2011	1,895	24
2012	1,981	21
2013	1,902	29
2014	1,763	21
2015	1,897	35



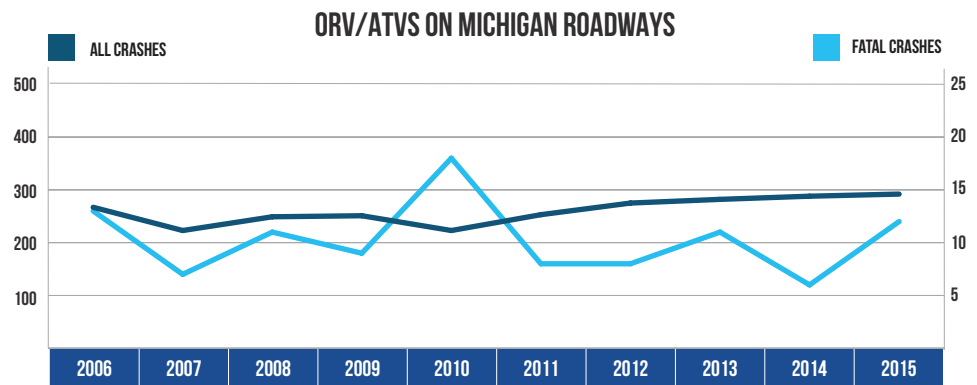
There were 1,897 bicycles involved in crashes in 2015, down 8.0 percent from 2006. There were 35 bicycles involved in fatal crashes in 2015, up 9.4 percent from 2006.

SNOWMOBILES ON MICHIGAN ROADWAYS		
Year	All Crashes	Fatal Crashes
2006	166	8
2007	217	8
2008	240	15
2009	189	19
2010	156	8
2011	132	6
2012	120	5
2013	179	10
2014	204	9
2015	133	2



There were 133 snowmobiles in crashes on roadways in 2015, down 19.9 percent from 2006. There were 2 snowmobiles in fatal crashes, down 75.0 percent from 2006.

ORV/ATVS ON MICHIGAN ROADWAYS		
Year	All Crashes	Fatal Crashes
2006	267	13
2007	223	7
2008	249	11
2009	251	9
2010	223	18
2011	253	8
2012	275	8
2013	282	11
2014	288	6
2015	292	12



There were 292 ORV/ATVs in crashes on roadways in 2015, up 9.4 percent from 2006. There were 12 ORV/ATVs in fatal crashes, down 7.7 percent from 2006.