



2014

**MTCF**  
Michigan Traffic  
Crash Facts

# Michigan Traffic Crash Facts

## Reporting Criteria

Please pay particular attention to the wording when interpreting the three levels of data gathered for this report.

### Crash

The Crash Level analyzes data related to crash events and returns one result per crash.

Examples: Time, weather, and location.

### Units

The Units Level analyzes the experience of the units in the crash and returns one result per vehicle, driver, pedestrian, bicyclist, or train.

Examples: Vehicle type, driver condition, and unit events.

### People

The People Level analyzes the experience of the people involved in the crash and returns one result per occupant/person/party.

Examples: Age, injury severity, and seat belt or helmet use.

### **KABCO Injury Indicator:**

K = Killed

A = Incapacitating Injury

B = Non-incapacitating Injury

C = Possible Injury

O = No Injury

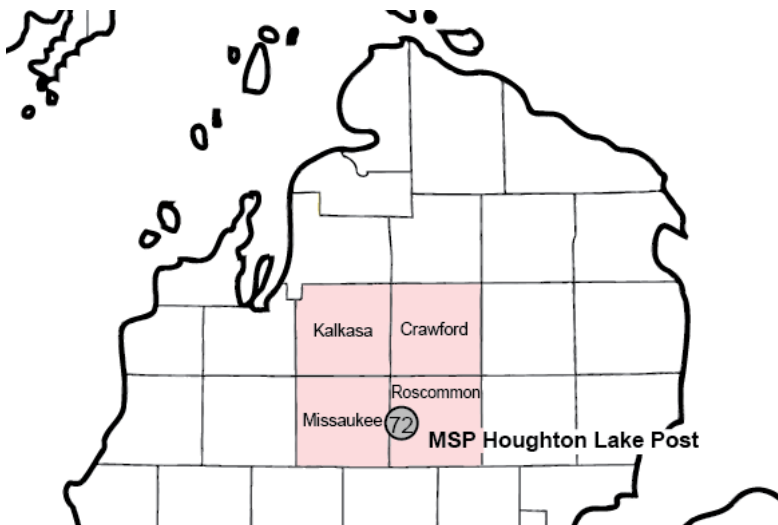
Property Damage Only (PDO)



## Michigan State Police (MSP) Post 72 - Houghton Lake

### 2014 Traffic Crash Data & 2010-2014 5-Year Trends

Post 72 is comprised of Crawford, Kalkaska, Missaukee, and Roscommon counties. Trend tables for this report are based on those counties.



### Sources:

The crashes in this report occurred on public roadways in Michigan and resulted in injuries, fatalities, or property damage (with \$1,000 as a reporting threshold). The information was gathered from Michigan Traffic Crash Report Forms (UD-10) submitted by local police departments, sheriff's offices, and the Michigan State Police. Other related information was obtained from the departments of Transportation, State, and Community Health.

This page left intentionally blank

## Post 72 Experience

In 2014:

There were 3,101 drivers involved in 2,514 motor vehicle crashes in MSP Post 72. Of those crashes, 10 were classified as fatal, resulting in 11 fatalities. An additional 491 persons were injured.

Post 72 experienced the highest number of motor vehicle crashes (366) in November, the highest number of fatal crashes (3) and the highest number of persons killed (3) in May.

Michigan driver statistics indicate 5.1 percent of licensed drivers in Post 72 were age 16-20, and 9.0 percent of drivers in crashes were also in that age group.

## 2014 - Crashes and Injuries by Month

Month	Crashes				Persons	
	Total	Fatal	Injury	Property Damage Only (PDO)	Fatalities	Injuries
January	260	0	36	224	0	46
February	173	2	24	147	2	34
March	220	0	27	193	0	41
April	167	1	18	148	2	23
May	171	3	27	141	3	38
June	190	1	21	168	1	29
July	194	0	39	155	0	58
August	171	0	28	143	0	44
September	150	1	24	125	1	35
October	208	2	30	176	2	39
November	366	0	46	320	0	63
December	244	0	30	214	0	41
<b>Total</b>	<b>2,514</b>	<b>10</b>	<b>350</b>	<b>2,154</b>	<b>11</b>	<b>491</b>

## 2014 - Driver Statistics

Age Group	Statewide			Driver Rates	
	2014 Population	Licensed Drivers	Drivers in Crashes	Per 10k Population	Per 10k Licensed
0 - 15	11,741	348	8	6.8	229.9
16 - 20	3,606	2,839	280	776.5	986.3
21 - 24	2,688	2,613	278	1,034.2	1,063.9
25 - 64	35,435	33,382	2,040	575.7	611.1
65 +	16,661	16,095	437	262.3	271.5
Unknown	--	--	58	--	--
<b>Total</b>	<b>70,131</b>	<b>55,277</b>	<b>3,101</b>	<b>442.2</b>	<b>561.0</b>

## 2014 - Vehicles in Crashes

Vehicle Type	Motor Vehicles		Fatal Crashes		Injury Crashes	PDO Crashes
	Number of Vehicles	% of Total	Number	% of Total	Number	Number
Passenger car & station wagon	2,086	67.3	7	46.7	311	1,768
Van & motorhome	143	4.6	0	0.0	18	125
Pickup truck	648	20.9	3	20.0	86	559
Small truck under 10,000 lbs. GVWR	51	1.6	0	0.0	4	47
Cycle	36	1.2	2	13.3	24	10
Moped	5	0.2	0	0.0	4	1
Go Cart	0	0.0	0	0.0	0	0
Snowmobile	12	0.4	2	13.3	5	5
Off-Road Vehicle (ORV) & All-Terrain Vehicle (ATV)	24	0.8	1	6.7	22	1
Other	7	0.2	0	0.0	4	3
Truck/bus over 10,000 lbs.	65	2.1	0	0.0	10	55
Unknown	24	0.8	0	0.0	1	23
<b>Total</b>	<b>3,101</b>	<b>100.0</b>	<b>15</b>	<b>100.0</b>	<b>489</b>	<b>2,597</b>

# MSP Post 72 - Houghton Lake (continued)

## 5-Year Trend - Crashes by Month

Month	2010		2011		2012		2013		2014	
	Total Crashes	Fatal Crashes	Total Crashes	Fatal Crashes	Total Crashes	Fatal Crashes	Total Crashes	Fatal Crashes	Total Crashes	Fatal Crashes
January	230	1	288	2	243	1	251	0	260	0
February	219	1	172	0	198	1	195	3	173	2
March	147	1	190	1	157	0	182	2	220	0
April	150	1	211	0	118	0	204	2	167	1
May	190	2	151	1	159	1	168	0	171	3
June	176	2	215	0	180	1	205	2	190	1
July	202	1	211	1	174	1	179	2	194	0
August	153	1	138	0	149	2	175	2	171	0
September	190	2	189	1	189	0	199	1	150	1
October	207	0	259	1	234	0	227	1	208	2
November	273	3	264	1	305	1	364	3	366	0
December	275	2	247	0	243	1	322	1	244	0
<b>Total</b>	<b>2,412</b>	<b>17</b>	<b>2,535</b>	<b>8</b>	<b>2,349</b>	<b>9</b>	<b>2,671</b>	<b>19</b>	<b>2,514</b>	<b>10</b>

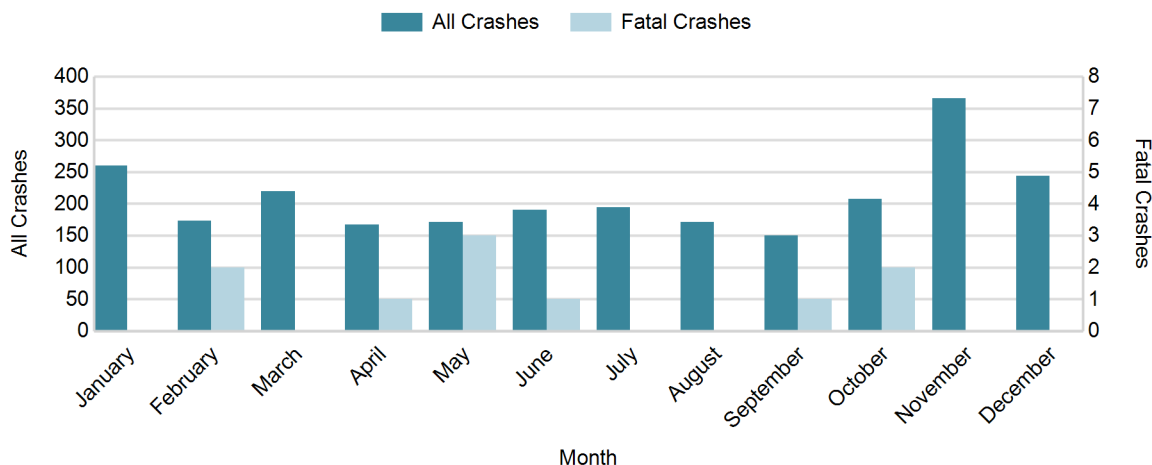
Note: † Indicates that the highest number of total crashes reported in the 5-year period occurred in the same month

## 5-Year Trend - Crashes by Day of Week

Day	2010		2011		2012		2013		2014	
	Total Crashes	Fatal Crashes	Total Crashes	Fatal Crashes	Total Crashes	Fatal Crashes	Total Crashes	Fatal Crashes	Total Crashes	Fatal Crashes
Monday	332	3	323	1	316	0	383	2	317	1
Tuesday	307	0	350	0	318	0	366	4	353	0
Wednesday	330	2	322	1	283	2	383	2	374	1
Thursday	349	5	387	1	316	0	415	1	369	2
Friday	408	2	408	2	440	2	423	5	441	0
Saturday	381	2	409	2	368	4	402	4	339	2
Sunday	305	3	336	1	308	1	299	1	321	4
<b>Total</b>	<b>2,412</b>	<b>17</b>	<b>2,535</b>	<b>8</b>	<b>2,349</b>	<b>9</b>	<b>2,671</b>	<b>19</b>	<b>2,514</b>	<b>10</b>

Note: † Indicates that the highest number of total crashes reported in the 5-year period occurred on the same day of the week

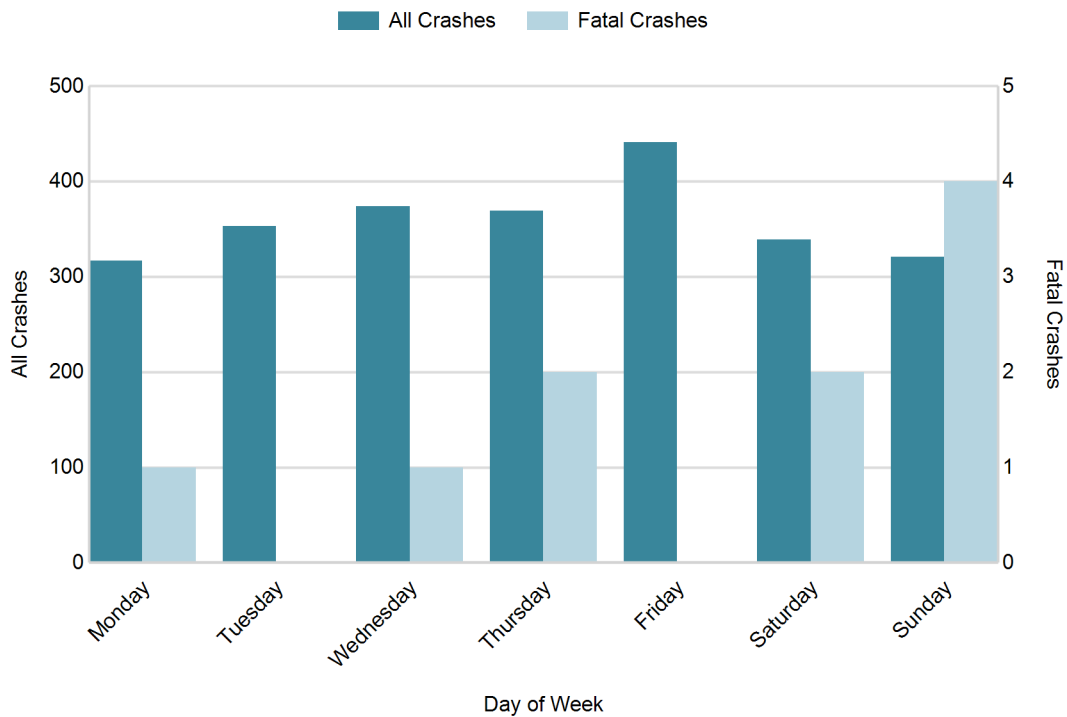
## 2014 Crashes by Month



## 2014 - Crashes by Day of Week

Day	All Crashes		Fatal Crashes		Injury Crashes			PDO Crashes
	Number	% of Total	Number	% of Fatal	A	B	C	Number
Monday	317	12.6	1	10.0	8	12	16	280
Tuesday	353	14.0	0	0.0	6	16	22	309
Wednesday	374	14.9	1	10.0	10	16	31	316
Thursday	369	14.7	2	20.0	11	12	14	330
Friday	441	17.5	0	0.0	12	15	38	376
Saturday	339	13.5	2	20.0	8	24	30	275
Sunday	321	12.8	4	40.0	10	14	25	268
<b>Total</b>	<b>2,514</b>	<b>100.0</b>	<b>10</b>	<b>100.0</b>	<b>65</b>	<b>109</b>	<b>176</b>	<b>2,154</b>

## 2014 Day of Week and Severity

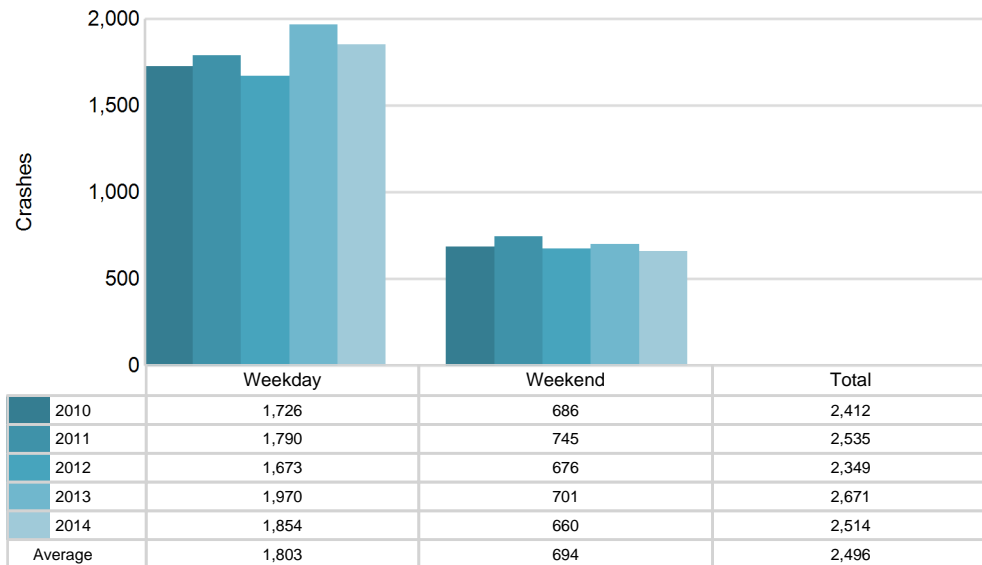


## MSP Post 72 - Houghton Lake (continued)

### 5-Year Trend - Crashes by Weekday and Weekend

Portion of Week	2010		2011		2012		2013		2014	
	Total Crashes	Fatal Crashes	Total Crashes	Fatal Crashes	Total Crashes	Fatal Crashes	Total Crashes	Fatal Crashes	Total Crashes	Fatal Crashes
Weekday	1,726	12	1,790	5	1,673	4	1,970	14	1,854	4
Weekend	686	5	745	3	676	5	701	5	660	6
<b>Total</b>	<b>2,412</b>	<b>17</b>	<b>2,535</b>	<b>8</b>	<b>2,349</b>	<b>9</b>	<b>2,671</b>	<b>19</b>	<b>2,514</b>	<b>10</b>

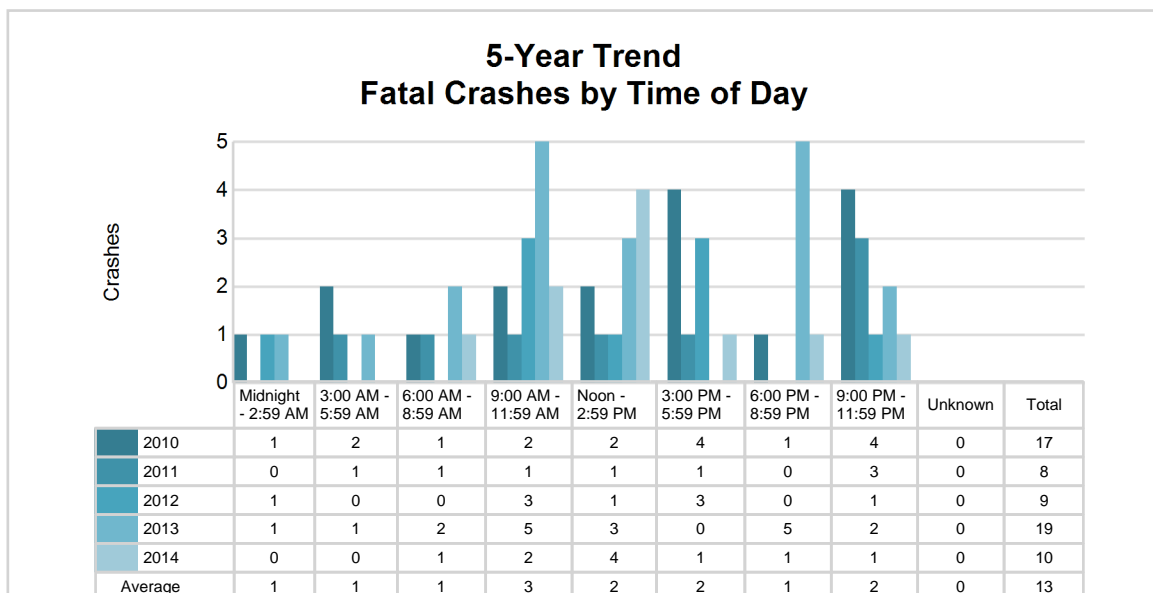
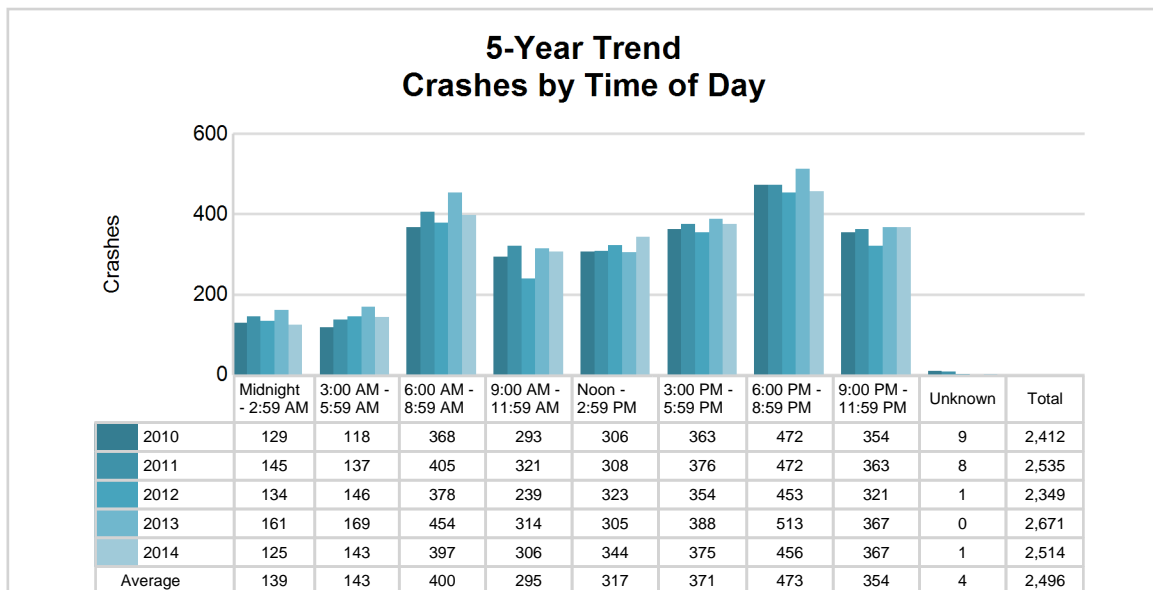
### 5-Year Crash Trends by Weekday (Monday - Friday) and Weekend (Saturday & Sunday)



## 5-Year Trend - Crashes by Time of Day

Time of Day	2010		2011		2012		2013		2014	
	Total Crashes	Fatal Crashes	Total Crashes	Fatal Crashes	Total Crashes	Fatal Crashes	Total Crashes	Fatal Crashes	Total Crashes	Fatal Crashes
Midnight - 2:59 AM	129	1	145	0	134	1	161	1	125	0
3:00 AM - 5:59 AM	118	2	137	1	146	0	169	1	143	0
6:00 AM - 8:59 AM	368	1	405	1	378	0	454	2	397	1
9:00 AM - 11:59 AM	293	2	321	1	239	3	314	5	306	2
Noon - 2:59 PM	306	2	308	1	323	1	305	3	344	4
3:00 PM - 5:59 PM	363	4	376	1	354	3	388	0	375	1
6:00 PM - 8:59 PM	472 †	1	472 †	0	453 †	0	513 †	5	456 †	1
9:00 PM - 11:59 PM	354	4	363	3	321	1	367	2	367	1
Unknown	9	0	8	0	1	0	0	0	1	0
<b>Total</b>	<b>2,412</b>	<b>17</b>	<b>2,535</b>	<b>8</b>	<b>2,349</b>	<b>9</b>	<b>2,671</b>	<b>19</b>	<b>2,514</b>	<b>10</b>

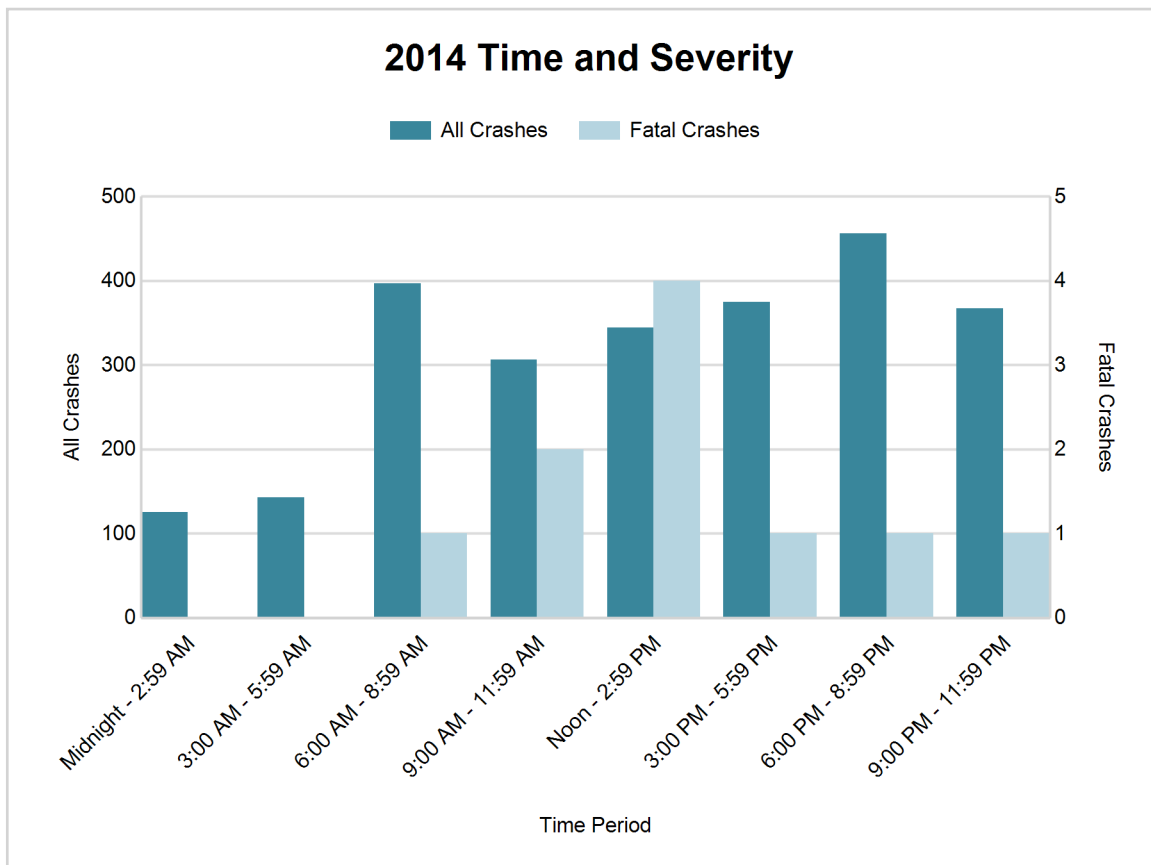
Note: † Indicates that the highest number of total crashes reported in the 5-year period occurred in the same time period



# MSP Post 72 - Houghton Lake (continued)

## 2014 - Time and Severity

Time of Day	All Crashes		Fatal Crashes		Injury Crashes			PDO Crashes
	Number	% of Total	Number	% of Fatal	A	B	C	Number
Midnight - 2:59 AM	125	5.0	0	0.0	3	5	8	109
3:00 AM - 5:59 AM	143	5.7	0	0.0	4	3	4	132
6:00 AM - 8:59 AM	397	15.8	1	10.0	10	9	17	360
9:00 AM - 11:59 AM	306	12.2	2	20.0	8	14	36	246
Noon - 2:59 PM	344	13.7	4	40.0	14	27	32	267
3:00 PM - 5:59 PM	375	14.9	1	10.0	13	23	44	294
6:00 PM - 8:59 PM	456	18.1	1	10.0	9	16	26	404
9:00 PM - 11:59 PM	367	14.6	1	10.0	4	12	9	341
Unknown	1	0.0	0	0.0	0	0	0	1
<b>Total</b>	<b>2,514</b>	<b>100.0</b>	<b>10</b>	<b>100.0</b>	<b>65</b>	<b>109</b>	<b>176</b>	<b>2,154</b>

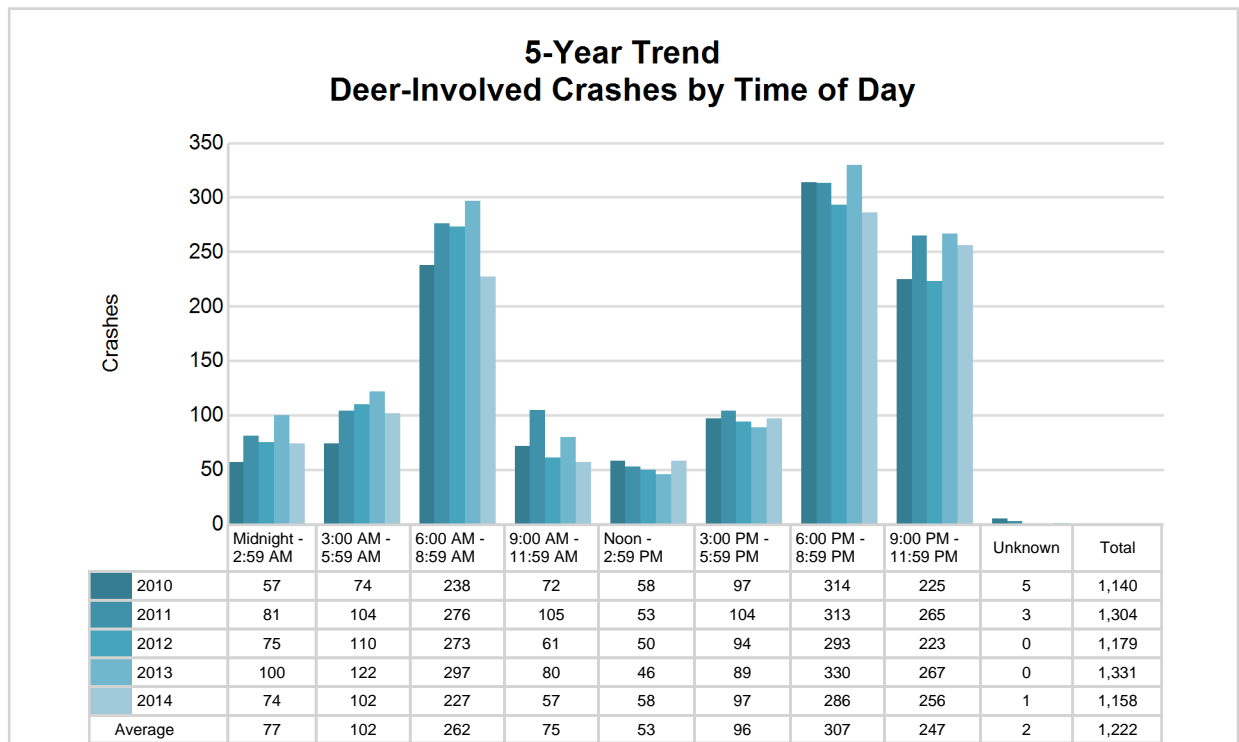




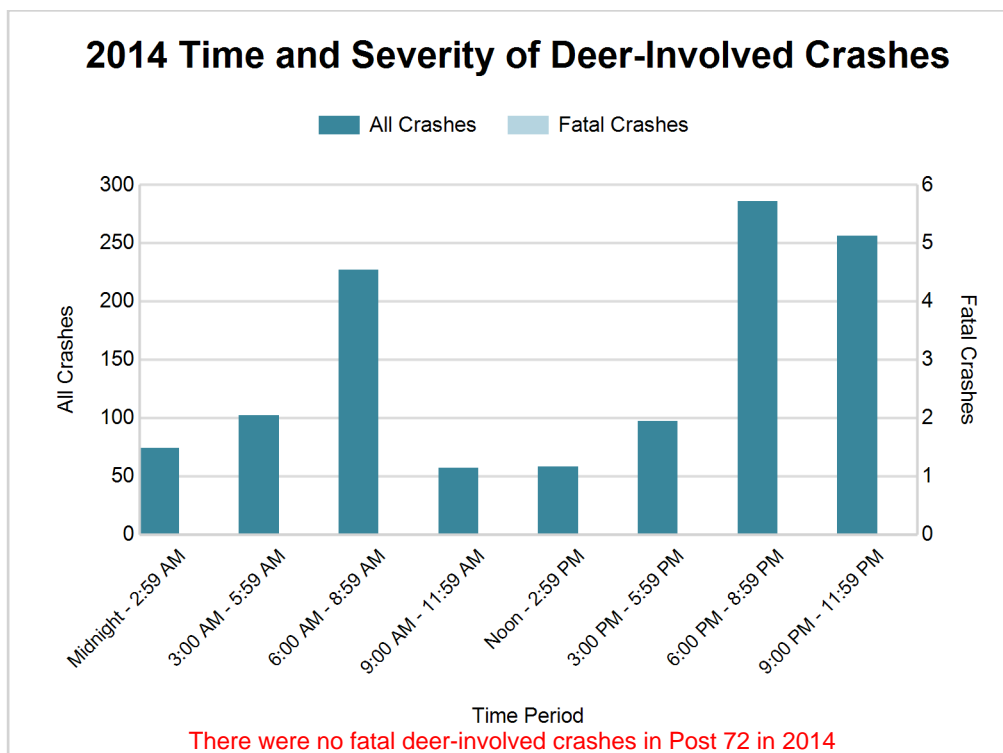
## 5-Year Trend - Deer-Involved Crashes by Time of Day

Time of Day	2010		2011		2012		2013		2014	
	Total Crashes	Fatal Crashes	Total Crashes	Fatal Crashes	Total Crashes	Fatal Crashes	Total Crashes	Fatal Crashes	Total Crashes	Fatal Crashes
Midnight - 2:59 AM	57	0	81	0	75	0	100	0	74	0
3:00 AM - 5:59 AM	74	0	104	0	110	0	122	0	102	0
6:00 AM - 8:59 AM	238	0	276	0	273	0	297	0	227	0
9:00 AM - 11:59 AM	72	0	105	0	61	0	80	0	57	0
Noon - 2:59 PM	58	0	53	0	50	0	46	0	58	0
3:00 PM - 5:59 PM	97	0	104	0	94	0	89	0	97	0
6:00 PM - 8:59 PM	314 †	0	313 †	0	293 †	0	330 †	0	286 †	0
9:00 PM - 11:59 PM	225	1	265	0	223	0	267	0	256	0
Unknown	5	0	3	0	0	0	0	0	1	0
<b>Total</b>	<b>1,140</b>	<b>1</b>	<b>1,304</b>	<b>0</b>	<b>1,179</b>	<b>0</b>	<b>1,331</b>	<b>0</b>	<b>1,158</b>	<b>0</b>

Note: † Indicates that the highest number of total crashes reported in the 5-year period occurred in the same time period



## MSP Post 72 - Houghton Lake (continued)



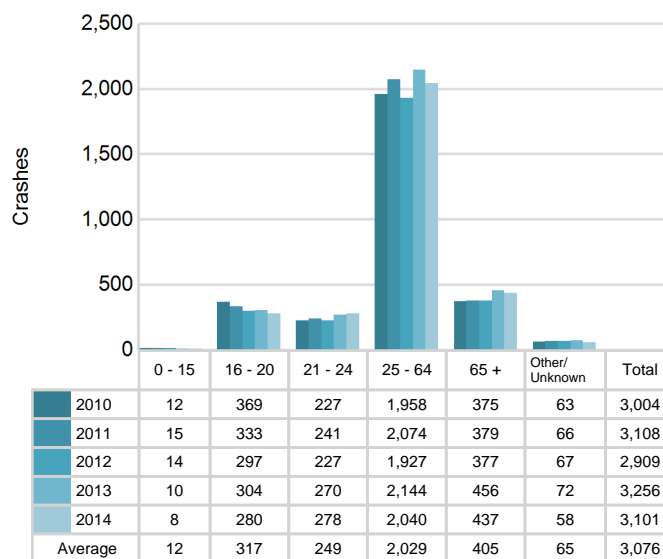
### 2014 - Reported Motor Vehicle Crashes by County

County	Crashes											Persons	
	Total	Fatal	Injury	Property Damage	Inter-state	US Route	State Route	Local Street	Alcohol-Involved	Drug-Involved	Deer-Involved	Fatalities	Injuries
Crawford	588	4	80	504	176	24	155	233	15	4	265	4	113
Kalkaska	603	1	98	504	0	115	163	325	14	7	260	2	122
Missaukee	572	1	46	525	0	0	189	383	14	2	350	1	65
Roscommon	751	4	126	621	120	90	206	335	23	4	283	4	191
<b>Total</b>	<b>2,514</b>	<b>10</b>	<b>350</b>	<b>2,154</b>	<b>296</b>	<b>229</b>	<b>713</b>	<b>1,276</b>	<b>66</b>	<b>17</b>	<b>1,158</b>	<b>11</b>	<b>491</b>

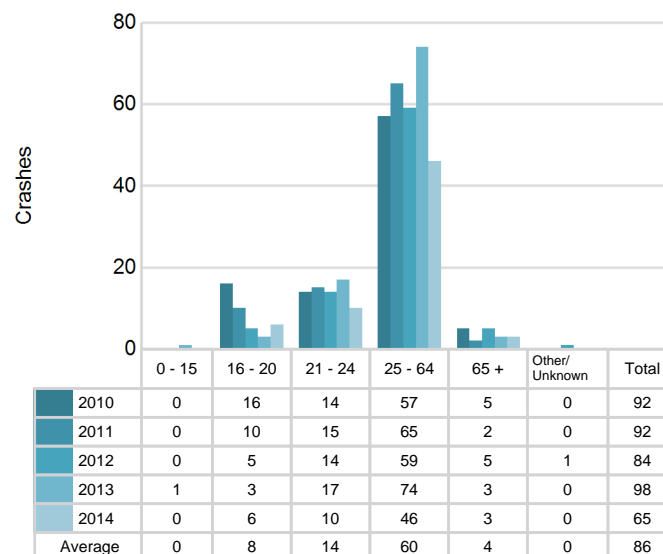
## 5-Year Trend - Drivers in Crashes Coded Drinking by Driver Age

Driver Age	2010		2011		2012		2013		2014	
	Total Drivers in Crashes	Total Drivers Coded Drinking	Total Drivers in Crashes	Total Drivers Coded Drinking	Total Drivers in Crashes	Total Drivers Coded Drinking	Total Drivers in Crashes	Total Drivers Coded Drinking	Total Drivers in Crashes	Total Drivers Coded Drinking
0 - 15	12	0	15	0	14	0	10	1	8	0
16 - 20	369	16	333	10	297	5	304	3	280	6
21 - 24	227	14	241	15	227	14	270	17	278	10
25 - 64	1,958	57	2,074	65	1,927	59	2,144	74	2,040	46
65 +	375	5	379	2	377	5	456	3	437	3
Unknown	63	0	66	0	67	1	72	0	58	0
<b>Total</b>	<b>3,004</b>	<b>92</b>	<b>3,108</b>	<b>92</b>	<b>2,909</b>	<b>84</b>	<b>3,256</b>	<b>98</b>	<b>3,101</b>	<b>65</b>

### 5-Year Trend Total Drivers in Crashes by Age



### 5-Year Trend Total Drivers Coded Drinking by Age



# MSP Post 72 - Houghton Lake (continued)

## 2014 - Bodily Alcohol Concentration (BAC) Results Among All Vehicle Drivers in Alcohol-Involved Crashes by Age

Age Group	Drivers				BAC Result Range for Drivers Coded Drinking				
	Total Drivers in Alcohol-Involved Crashes	Total Drivers Tested in all Crashes	Total Drivers Coded Drinking, Tested	Total Drivers Coded Drinking	BAC = 0.00	BAC 0.01 g/dL to 0.07 g/dL	BAC 0.08 g/dL to 0.16 g/dL	BAC 0.17 g/dL and Above	BAC Not Reported
0 - 15	0	0	0	0	0	0	0	0	0
16 - 20	6	10	6	6	0	0	1	2	3
21 - 24	12	13	8	10	0	0	3	4	3
25 - 64	51	57	34	46	0	2	11	14	19
65 +	4	5	3	3	0	0	1	1	1
Unknown	0	1	0	0	0	0	0	0	0
<b>Total</b>	<b>73</b>	<b>86</b>	<b>51</b>	<b>65</b>	<b>0</b>	<b>2</b>	<b>16</b>	<b>21</b>	<b>26</b>

Notes: BAC measured in grams (g) per deciliter (dL).

BAC may not be reported if drivers are not tested or if the results are not available immediately (as in the case of a blood test).

A driver may be coded by the officer as drinking even though no test is administered.

## Alcohol-Involved Crashes

In 2014, there were 73 drivers in alcohol-involved crashes; 65 (89.0%) of those drivers were coded as had-been-drinking by the officer on the crash form.

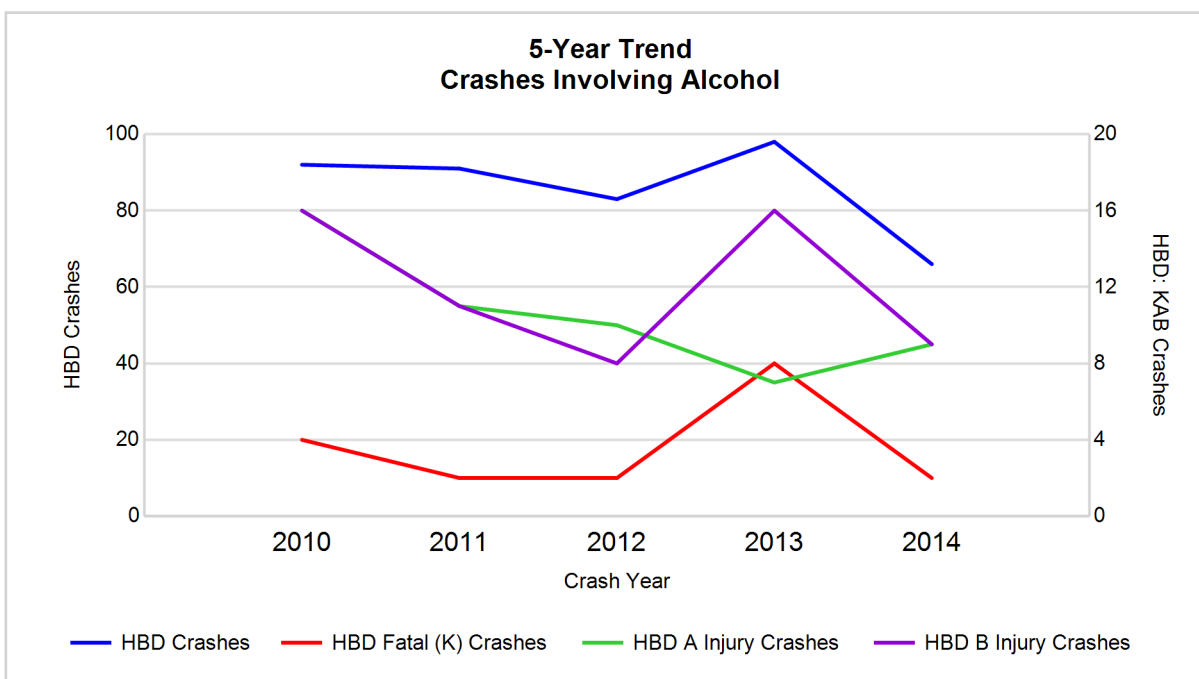
- 37 (56.9%) of the 65 drivers had a blood alcohol concentration (BAC) of 0.08 g/dL (grams per deciliter) or greater, and 21 (56.8%) of the 37 drivers had a BAC at or above 0.17 g/dL.
- 51 (78.5%) of the 65 drivers were coded as had-been-drinking and were tested for alcohol consumption.

## 5-Year Trend - Crashes Involving Alcohol

Year	All Crashes	HBD Crashes	% HBD	Fatal Crashes	HBD Fatal Crashes	% HBD	A Injury Crashes	HBD A Injury Crashes	% HBD	B Injury Crashes	HBD B Injury Crashes	% HBD
2010	2,412	92	3.8	17	4	23.5	66	16	24.2	109	16	14.7
2011	2,535	91	3.6	8	2	25.0	63	11	17.5	118	11	9.3
2012	2,349	83	3.5	9	2	22.2	74	10	13.5	96	8	8.3
2013	2,671	98	3.7	19	8	42.1	62	7	11.3	87	16	18.4
2014	2,514	66*	2.6*	10	2	20.0*	65	9	13.8	109	9	8.3

Note: \* Indicates that the most recent year is the lowest number or percentage reported in the 5-year period in that column

\*\* Indicates that the most recent year is the highest number or percentage reported in the 5-year period in that column



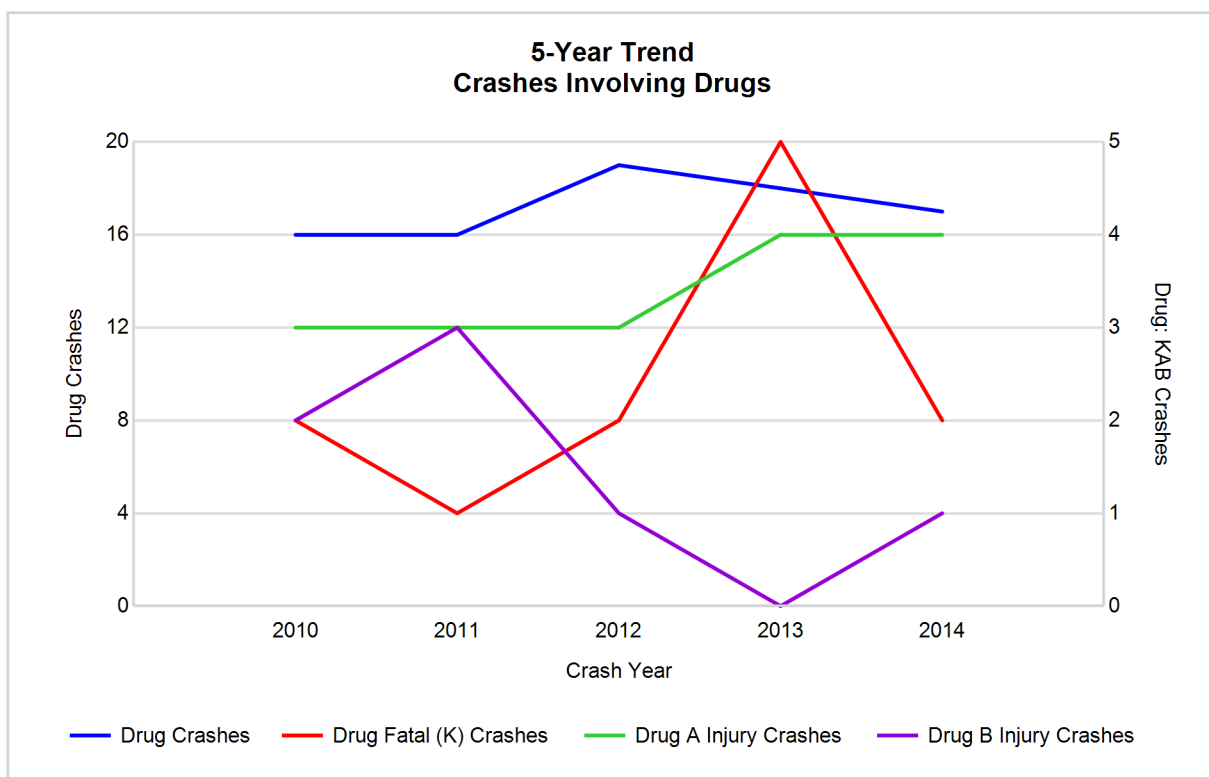
Note: Had-Been-Drinking (HBD)

## 5-Year Trend - Crashes Involving Drugs

Year	All Crashes	Drug Crashes	% Drug	Fatal Crashes	Drug Fatal Crashes	% Drug	A Injury Crashes	Drug A Injury Crashes	% Drug	B Injury Crashes	Drug B Injury Crashes	% Drug
2010	2,412	16	0.7	17	2	11.8	66	3	4.5	109	2	1.8
2011	2,535	16	0.6	8	1	12.5	63	3	4.8	118	3	2.5
2012	2,349	19	0.8	9	2	22.2	74	3	4.1	96	1	1.0
2013	2,671	18	0.7	19	5	26.3	62	4	6.5	87	0	0.0
2014	2,514	17	0.7	10	2	20.0	65	4	6.2	109	1	0.9

Note: \* Indicates that the most recent year is the lowest number or percentage reported in the 5-year period in that column

\*\* Indicates that the most recent year is the highest number or percentage reported in the 5-year period in that column



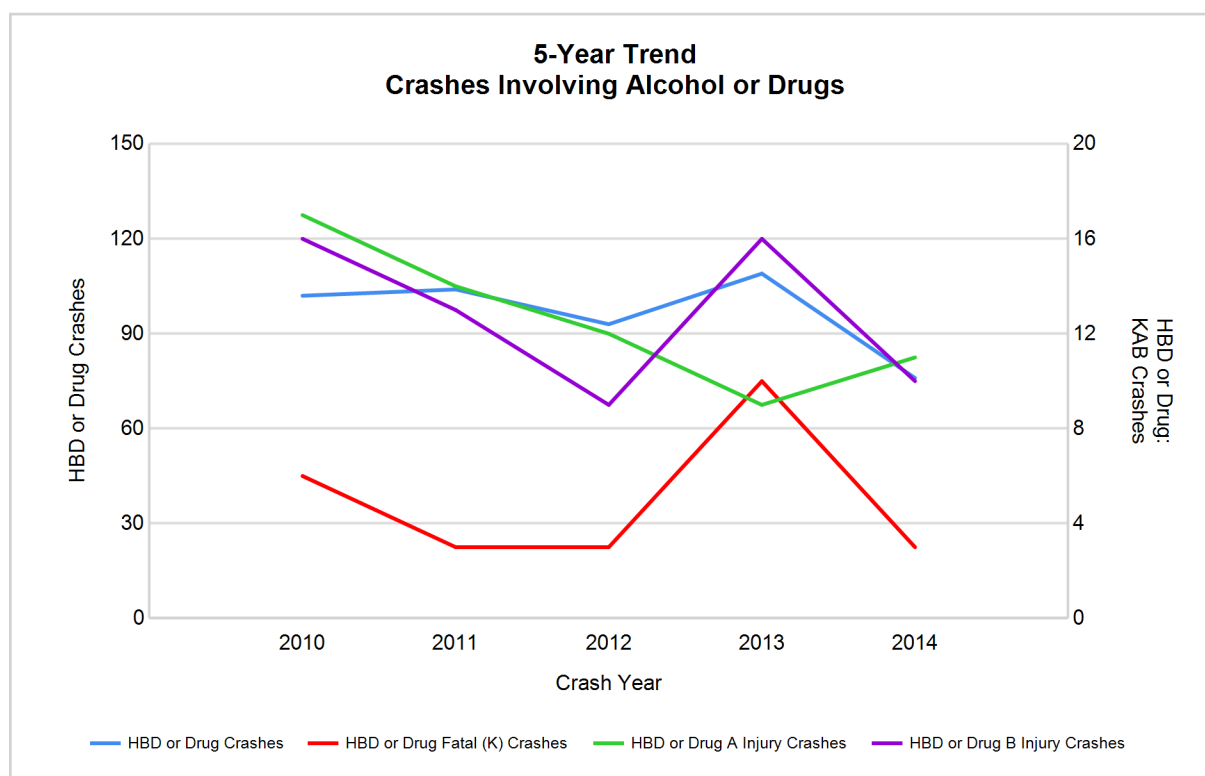
# MSP Post 72 - Houghton Lake (continued)

## 5-Year Trend - Crashes Involving Alcohol or Drugs

Year	All Crashes	HBD or Drug Crashes	% HBD or Drug	Fatal Crashes	HBD or Drug Fatal Crashes	% HBD or Drug	A Injury Crashes	HBD or Drug A Injury Crashes	% HBD or Drug	B Injury Crashes	HBD or Drug B Injury Crashes	% HBD or Drug
2010	2,412	102	4.2	17	6	35.3	66	17	25.8	109	16	14.7
2011	2,535	104	4.1	8	3	37.5	63	14	22.2	118	13	11.0
2012	2,349	93	4.0	9	3	33.3	74	12	16.2	96	9	9.4
2013	2,671	109	4.1	19	10	52.6	62	9	14.5	87	16	18.4
2014	2,514	76*	3.0*	10	3	30.0*	65	11	16.9	109	10	9.2*

Note: \* Indicates that the most recent year is the lowest number or percentage reported in the 5-year period in that column

\*\* Indicates that the most recent year is the highest number or percentage reported in the 5-year period in that column



Note: Had-Been-Drinking (HBD)

# MSP Post 72 - Houghton Lake (continued)

13

## 2014 - Restraints Worn Among Vehicle Drivers and Injured Passengers by Vehicle Type

Vehicle Type	Total Occupants			Fatalities			A - Incapacitating			B - Non-incapacitating			C - Possible Injury			No Injury		
	Total	Used Restraint	%	Total	Used Restraint	%	Total	Used Restraint	%	Total	Used Restraint	%	Total	Used Restraint	%	Total	Used Restraint	%
Passenger car & station wagon	2,197	2,117	96.4	5	2	40.0	57	47	82.5	97	85	87.6	166	149	89.8	1,851	1,829	98.8
Van & motorhome	154	145	94.2	0	0	0.0	2	1	50.0	2	2	100.0	15	10	66.7	135	132	97.8
Pickup truck	675	636	94.2	1	1	100.0	10	6	60.0	29	27	93.1	42	40	95.2	580	561	96.7
Small truck under 10,000 lbs. GVWR	51	50	98.0	0	0	0.0	0	0	0.0	0	0	0.0	2	2	100.0	49	48	98.0
Cycle	38	27	71.1	2	1	50.0	7	4	57.1	8	5	62.5	8	7	87.5	13	10	76.9
Moped	6	4	66.7	0	0	0.0	1	1	100.0	4	2	50.0	0	0	0.0	1	1	100.0
Go Cart	0	0	0.0	0	0	0.0	0	0	0.0	0	0	0.0	0	0	0.0	0	0	0.0
Snowmobile	13	13	100.0	1	1	100.0	3	3	100.0	1	1	100.0	2	2	100.0	6	6	100.0
Off-Road Vehicle (ORV) & All-Terrain Vehicle (ATV)	28	17	60.7	1	1	100.0	11	7	63.6	9	4	44.4	3	3	100.0	4	2	50.0
Other	7	4	57.1	0	0	0.0	1	0	0.0	0	0	0.0	1	1	100.0	5	3	60.0
Truck/bus over 10,000 lbs.	65	60	92.3	0	0	0.0	0	0	0.0	0	0	0.0	3	2	66.7	60	58	96.7
Unknown	24	0	0.0	0	0	0.0	0	0	0.0	0	0	0.0	0	0	0.0	0	0	0.0
<b>Total</b>	<b>3,258</b>	<b>3,073</b>	<b>94.3</b>	<b>10</b>	<b>6</b>	<b>60.0</b>	<b>92</b>	<b>69</b>	<b>75.0</b>	<b>150</b>	<b>126</b>	<b>84.0</b>	<b>242</b>	<b>216</b>	<b>89.3</b>	<b>2,704</b>	<b>2,650</b>	<b>98.0</b>

Note: Restraint Use includes shoulder belt only used, lap belt only used, both lap and shoulder belts used, child restraint used, restraint failure, and helmet worn.

## 2014 - Restraints Worn Among Vehicle Drivers and Injured Passengers by Age

Age Group	Total Occupants			Fatalities			A - Incapacitating			B - Non-incapacitating			C - Possible Injury			No Injury		
	Total	Used Restraint	%	Total	Used Restraint	%	Total	Used Restraint	%	Total	Used Restraint	%	Total	Used Restraint	%	Total	Used Restraint	%
0 - 15	38	35	92.1	0	0	0.0	8	8	100.0	11	10	90.9	18	16	88.9	1	1	100.0
16 - 20	309	292	94.5	1	1	100.0	16	9	56.3	26	23	88.5	29	26	89.7	235	231	98.3
21 - 24	297	278	93.6	3	2	66.7	12	11	91.7	12	9	75.0	19	15	78.9	250	241	96.4
25 - 64	2,102	2,027	96.4	2	1	50.0	46	32	69.6	84	70	83.3	136	121	89.0	1,831	1,800	98.3
65 +	453	439	96.9	4	2	50.0	10	9	90.0	16	14	87.5	38	37	97.4	385	377	97.9
Unknown	59	2	3.4	0	0	0.0	0	0	0.0	1	0	0.0	2	1	50.0	2	0	0.0
<b>Total</b>	<b>3,258</b>	<b>3,073</b>	<b>94.3</b>	<b>10</b>	<b>6</b>	<b>60.0</b>	<b>92</b>	<b>69</b>	<b>75.0</b>	<b>150</b>	<b>126</b>	<b>84.0</b>	<b>242</b>	<b>216</b>	<b>89.3</b>	<b>2,704</b>	<b>2,650</b>	<b>98.0</b>

Note: Restraint Use includes shoulder belt only used, lap belt only used, both lap and shoulder belts used, child restraint used, restraint failure, and helmet worn.

## MSP Post 72 - Houghton Lake (continued)

## 5-Year Trend - Restraint Use Among Drivers

Restraint Use	2010			2011			2012			2013			2014		
	Drivers	Fatal Drivers	Injured Drivers	Drivers	Fatal Drivers	Injured Drivers	Drivers	Fatal Drivers	Injured Drivers	Drivers	Fatal Drivers	Injured Drivers	Drivers	Fatal Drivers	Injured Drivers
No belts available	16	0	4	25	0	5	50	0	9	22	0	4	16	0	5
Shoulder belt only used	0	0	0	0	0	0	0	0	0	2	0	1	4	0	3
Lap belt only used	4	0	0	5	0	0	5	0	1	7	0	0	10	0	1
Both lap & shoulder belts used	2,798	4	298	2,888	2	271	2,658	1	243	3,027	11	260	2,879	2	249
No belts used	20	2	15	29	3	12	23	3	12	28	3	11	24	1	12
Child restraint used	0	0	0	0	0	0	0	0	0	0	0	0	0	0	0
Child restraint not used, unavailable or improper use	0	0	0	0	0	0	1	0	0	0	0	0	0	0	0
Restraint failure	0	0	0	0	0	0	3	0	1	3	0	1	1	0	1
Restraint use unknown	42	1	8	33	0	8	31	0	6	35	0	8	36	1	10
Helmet worn	49	4	35	56	2	43	58	1	41	50	2	38	57	3	36
Helmet not worn	2	1	1	3	0	2	9	0	9	6	1	4	16	1	11
Helmet use unknown	1	0	0	0	0	0	2	1	0	2	1	0	1	0	0
Uncoded & errors	72	0	3	69	0	0	69	0	3	74	0	0	57	0	1
<b>Total</b>	<b>3,004</b>	<b>12</b>	<b>364</b>	<b>3,108</b>	<b>7</b>	<b>341</b>	<b>2,909</b>	<b>6</b>	<b>325</b>	<b>3,256</b>	<b>18</b>	<b>327</b>	<b>3,101</b>	<b>8</b>	<b>329</b>

## 5-Year Trend - Restraint Use Among Drivers Coded Drinking

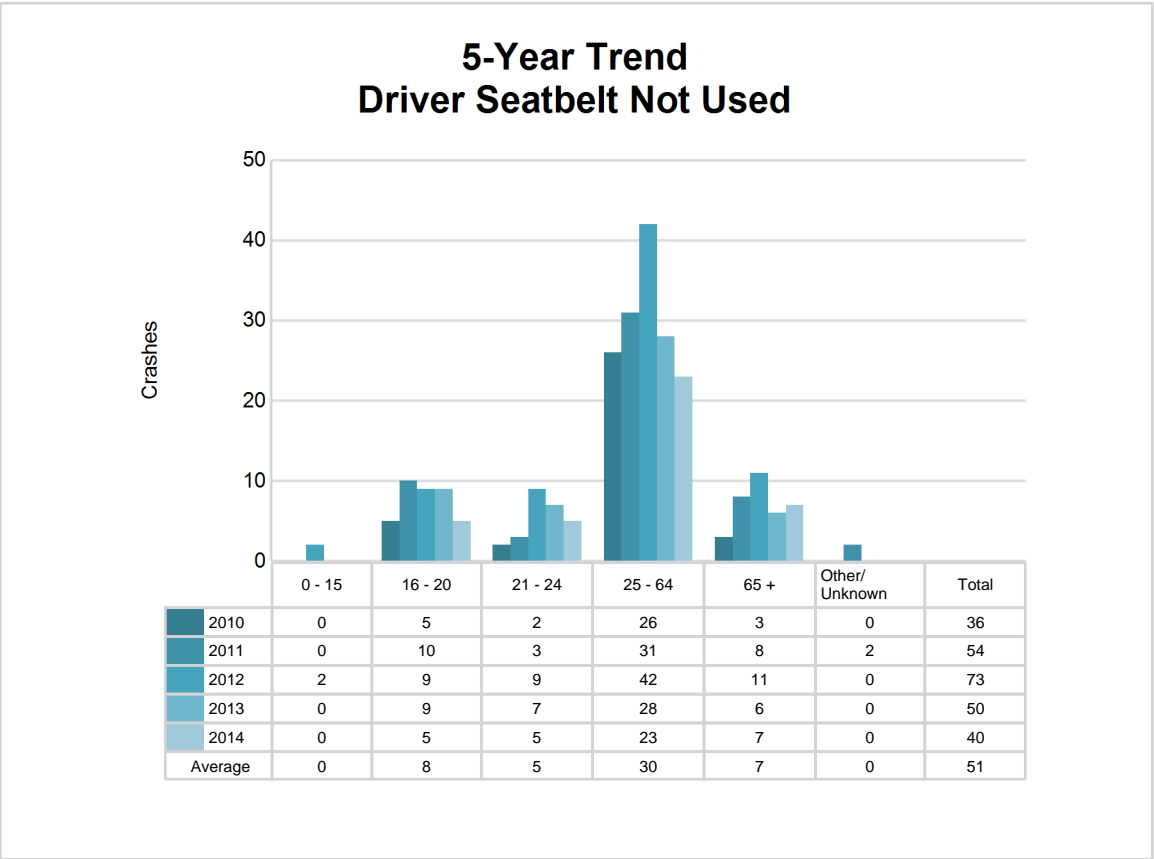
Restraint Use	2010			2011			2012			2013			2014		
	Drivers	Fatal Drivers	Injured Drivers	Drivers	Fatal Drivers	Injured Drivers	Drivers	Fatal Drivers	Injured Drivers	Drivers	Fatal Drivers	Injured Drivers	Drivers	Fatal Drivers	Injured Drivers
No belts available	2	0	2	2	0	0	0	0	0	0	0	0	0	0	0
Shoulder belt only used	0	0	0	0	0	0	0	0	0	1	0	1	1	0	1
Lap belt only used	0	0	0	0	0	0	0	0	0	0	0	0	0	0	0
Both lap & shoulder belts used	63	0	21	58	0	14	63	0	12	68	4	21	37	0	12
No belts used	7	1	6	7	0	2	3	1	2	9	2	3	8	1	6
Child restraint used	0	0	0	0	0	0	0	0	0	0	0	0	0	0	0
Child restraint not used, unavailable or improper use	0	0	0	0	0	0	0	0	0	0	0	0	0	0	0
Restraint failure	0	0	0	0	0	0	0	0	0	0	0	0	0	0	0
Restraint use unknown	15	0	4	16	0	4	11	0	2	13	0	4	14	0	4
Helmet worn	3	2	1	4	2	1	4	1	2	6	2	3	3	1	2
Helmet not worn	1	1	0	2	0	2	1	0	1	1	0	1	1	0	1
Helmet use unknown	0	0	0	0	0	0	0	0	0	0	0	0	0	0	0
Uncoded & errors	1	0	1	3	0	0	2	0	0	0	0	0	1	0	0
<b>Total</b>	<b>92</b>	<b>4</b>	<b>35</b>	<b>92</b>	<b>2</b>	<b>23</b>	<b>84</b>	<b>2</b>	<b>19</b>	<b>98</b>	<b>8</b>	<b>33</b>	<b>65</b>	<b>2</b>	<b>26</b>



5-Year Trend - Seatbelt Not Used Among Drivers by Age

Age Group	2010			2011			2012			2013			2014		
	Drivers	Fatal Drivers	Injured Drivers	Drivers	Fatal Drivers	Injured Drivers	Drivers	Fatal Drivers	Injured Drivers	Drivers	Fatal Drivers	Injured Drivers	Drivers	Fatal Drivers	Injured Drivers
0 - 15	0	0	0	0	0	0	2	0	2	0	0	0	0	0	0
16 - 20	5	0	2	10	0	4	9	0	1	9	0	5	5	0	2
21 - 24	2	0	1	3	0	2	9	1	2	7	0	1	5	0	2
25 - 64	26	2	14	31	3	9	42	1	12	28	2	8	23	0	13
65 +	3	0	2	8	0	1	11	1	4	6	1	1	7	1	0
Unknown	0	0	0	2	0	1	0	0	0	0	0	0	0	0	0
Total	36	2	19	54	3	17	73	3	21	50	3	15	40	1	17

Note: Seatbelt Not Used includes no belts available or no belts used.



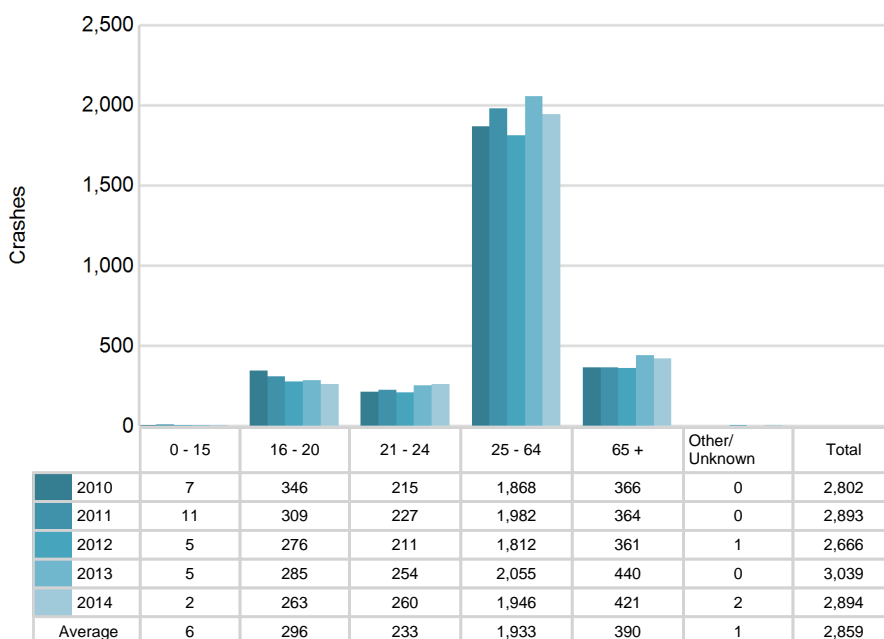
# MSP Post 72 - Houghton Lake (continued)

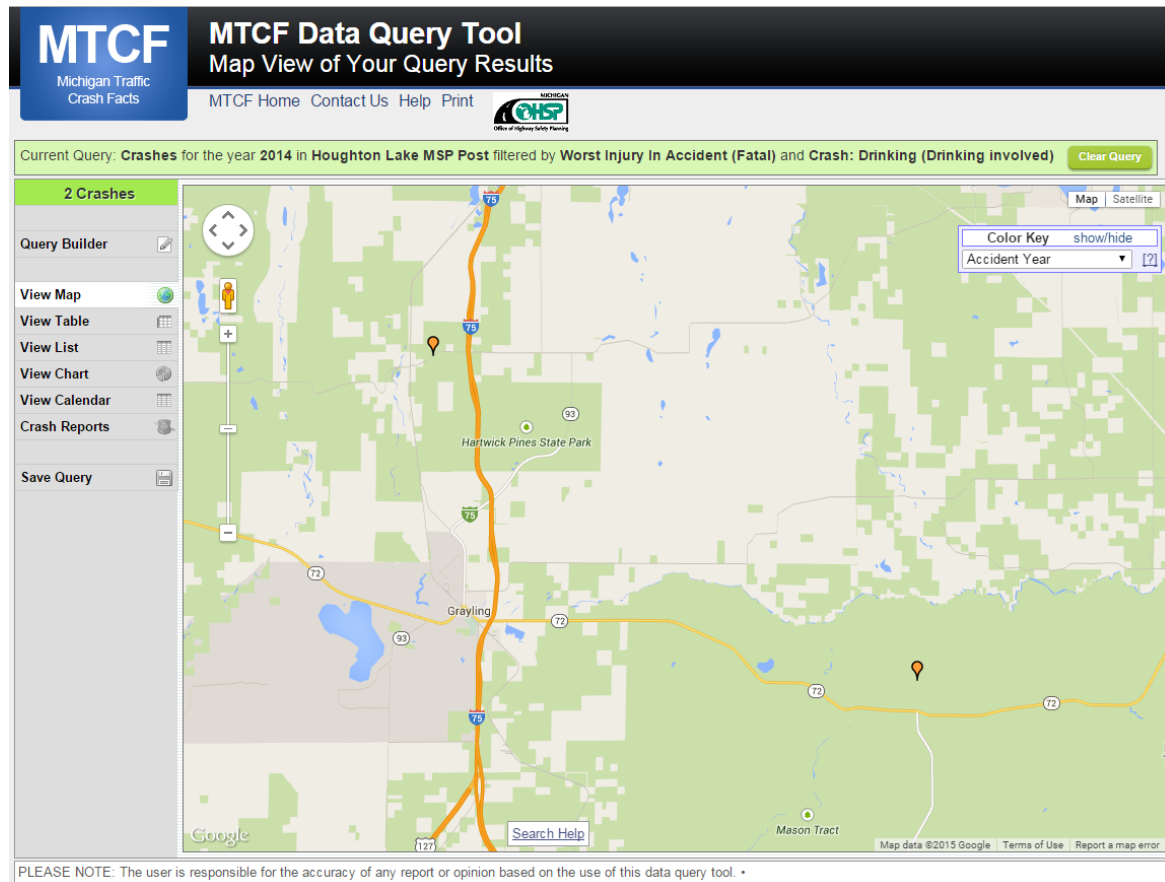
## 5-Year Trend - Seatbelt Used Among Drivers by Age

Age Group	2010			2011			2012			2013			2014		
	Drivers	Fatal Drivers	Injured Drivers	Drivers	Fatal Drivers	Injured Drivers	Drivers	Fatal Drivers	Injured Drivers	Drivers	Fatal Drivers	Injured Drivers	Drivers	Fatal Drivers	Injured Drivers
0 - 15	7	0	0	11	0	3	5	0	0	5	1	1	2	0	1
16 - 20	346	1	47	309	0	41	276	1	45	285	2	27	263	0	36
21 - 24	215	0	33	227	1	25	211	0	27	254	0	27	260	1	18
25 - 64	1,868	1	162	1,982	0	155	1,812	0	128	2,055	7	168	1,946	1	152
65 +	366	2	56	364	1	47	361	0	45	440	1	39	421	0	46
Unknown	0	0	0	0	0	0	1	0	0	0	0	0	2	0	1
<b>Total</b>	<b>2,802</b>	<b>4</b>	<b>298</b>	<b>2,893</b>	<b>2</b>	<b>271</b>	<b>2,666</b>	<b>1</b>	<b>245</b>	<b>3,039</b>	<b>11</b>	<b>262</b>	<b>2,894</b>	<b>2</b>	<b>254</b>

Note: Seatbelt Used includes shoulder belt only used, lap belt only used, both lap and shoulder belts used, and restraint failure.

## 5-Year Trend Driver Seatbelt Used





The picture above represents all 2014 alcohol-involved fatal crashes in Post 72.

In 2014, there were 66 alcohol-involved crashes in Post 72:

- 2 K - Fatal Crashes
- 9 A - Incapacitating Injury Crashes
- 9 B - Non-incapacitating Injury Crashes
- 14 C - Possible Injury Crashes
- 32 O - Property Damage Only/No Injury Crashes

### Office of Highway Safety Planning

333 South Grand Avenue  
P.O. Box 30634  
Lansing, Michigan 48909  
Phone: (517) 241-2500  
Fax: (517) 241-2501

Find us on the web:  
[MichiganTrafficCrashFacts.org](http://MichiganTrafficCrashFacts.org)

