



2014

**MTCF**  
Michigan Traffic  
Crash Facts

# Michigan Traffic Crash Facts

## Reporting Criteria

Please pay particular attention to the wording when interpreting the three levels of data gathered for this report.

### Crash

The Crash Level analyzes data related to crash events and returns one result per crash.

Examples: Time, weather, and location.

### Units

The Units Level analyzes the experience of the units in the crash and returns one result per vehicle, driver, pedestrian, bicyclist, or train.

Examples: Vehicle type, driver condition, and unit events.

### People

The People Level analyzes the experience of the people involved in the crash and returns one result per occupant/person/party.

Examples: Age, injury severity, and seat belt or helmet use.

### **KABCO Injury Indicator:**

K = Killed

A = Incapacitating Injury

B = Non-incapacitating Injury

C = Possible Injury

O = No Injury

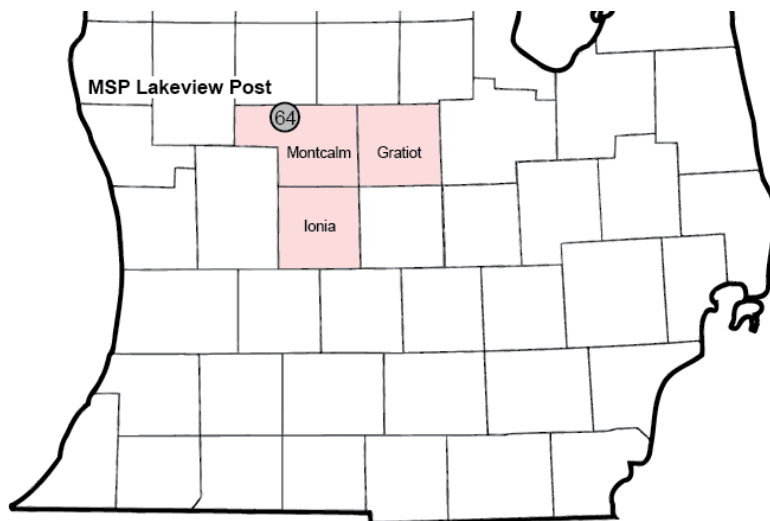
Property Damage Only (PDO)



## Michigan State Police (MSP) Post 64 - Lakeview

### 2014 Traffic Crash Data & 2010-2014 5-Year Trends

Post 64 is comprised of Gratiot, Ionia, and Montcalm counties.  
Trend tables for this report are based on those counties.



### Sources:

The crashes in this report occurred on public roadways in Michigan and resulted in injuries, fatalities, or property damage (with \$1,000 as a reporting threshold). The information was gathered from Michigan Traffic Crash Report Forms (UD-10) submitted by local police departments, sheriff's offices, and the Michigan State Police. Other related information was obtained from the departments of Transportation, State, and Community Health.

This page left intentionally blank

## Post 64 Experience

In 2014:

There were 7,032 drivers involved in 5,302 motor vehicle crashes in MSP Post 64. Of those crashes, 16 were classified as fatal, resulting in 17 fatalities. An additional 1,034 persons were injured.

Post 64 experienced the highest number of motor vehicle crashes (800) in November, the highest number of fatal crashes (4) in August, March, and the highest number of persons killed (5) in August.

Michigan driver statistics indicate 7.0 percent of licensed drivers in Post 64 were age 16-20, and 12.5 percent of drivers in crashes were also in that age group.

## 2014 - Crashes and Injuries by Month

Month	Crashes				Persons	
	Total	Fatal	Injury	Property Damage Only (PDO)	Fatalities	Injuries
January	619	0	85	534	0	109
February	487	2	56	429	2	77
March	412	4	45	363	4	65
April	266	0	48	218	0	70
May	371	0	47	324	0	62
June	392	2	60	330	2	81
July	344	0	77	267	0	101
August	282	4	56	222	5	80
September	321	0	61	260	0	74
October	611	2	69	540	2	111
November	800	2	103	695	2	128
December	397	0	49	348	0	76
<b>Total</b>	<b>5,302</b>	<b>16</b>	<b>756</b>	<b>4,530</b>	<b>17</b>	<b>1,034</b>

## 2014 - Driver Statistics

Age Group	Statewide			Driver Rates	
	2014 Population	Licensed Drivers	Drivers in Crashes	Per 10k Population	Per 10k Licensed
0 - 15	33,229	885	21	6.3	237.3
16 - 20	11,446	8,116	876	765.3	1,079.3
21 - 24	9,294	7,495	740	796.2	987.3
25 - 64	89,607	77,023	4,439	495.4	576.3
65 +	25,276	22,866	687	271.8	300.4
Unknown	--	--	269	--	--
<b>Total</b>	<b>168,852</b>	<b>116,385</b>	<b>7,032</b>	<b>416.5</b>	<b>604.2</b>

## 2014 - Vehicles in Crashes

Vehicle Type	Motor Vehicles		Fatal Crashes		Injury Crashes	PDO Crashes
	Number of Vehicles	% of Total	Number	% of Total	Number	Number
Passenger car & station wagon	5,050	71.8	16	66.7	789	4,245
Van & motorhome	194	2.8	1	4.2	26	167
Pickup truck	1,363	19.4	5	20.8	219	1,139
Small truck under 10,000 lbs. GVWR	48	0.7	0	0.0	8	40
Cycle	59	0.8	1	4.2	47	11
Moped	9	0.1	0	0.0	7	2
Go Cart	0	0.0	0	0.0	0	0
Snowmobile	3	0.0	0	0.0	2	1
Off-Road Vehicle (ORV) & All-Terrain Vehicle (ATV)	11	0.2	0	0.0	8	3
Other	38	0.5	0	0.0	9	29
Truck/bus over 10,000 lbs.	189	2.7	1	4.2	42	146
Unknown	68	1.0	0	0.0	7	61
<b>Total</b>	<b>7,032</b>	<b>100.0</b>	<b>24</b>	<b>100.0</b>	<b>1,164</b>	<b>5,844</b>

# MSP Post 64 - Lakeview (continued)

## 5-Year Trend - Crashes by Month

Month	2010		2011		2012		2013		2014	
	Total Crashes	Fatal Crashes	Total Crashes	Fatal Crashes	Total Crashes	Fatal Crashes	Total Crashes	Fatal Crashes	Total Crashes	Fatal Crashes
January	607	1	608	3	624	2	510	2	619	0
February	644	1	519	1	489	2	555	2	487	2
March	373	3	415	0	344	4	458	0	412	4
April	370	1	344	2	324	2	332	0	266	0
May	443	3	438	2	456	1	405	2	371	0
June	429	0	483	0	391	2	386	1	392	2
July	412	5	436	5	346	5	359	1	344	0
August	316	3	329	3	328	1	300	2	282	4
September	446	0	394	2	388	2	374	2	321	0
October	785	6	653	2	595	0	556	2	611	2
November	716	1	860	0	681	2	718	0	800	2
December	782	3	526	2	547	3	603	2	397	0
<b>Total</b>	<b>6,323</b>	<b>27</b>	<b>6,005</b>	<b>22</b>	<b>5,513</b>	<b>26</b>	<b>5,556</b>	<b>16</b>	<b>5,302</b>	<b>16</b>

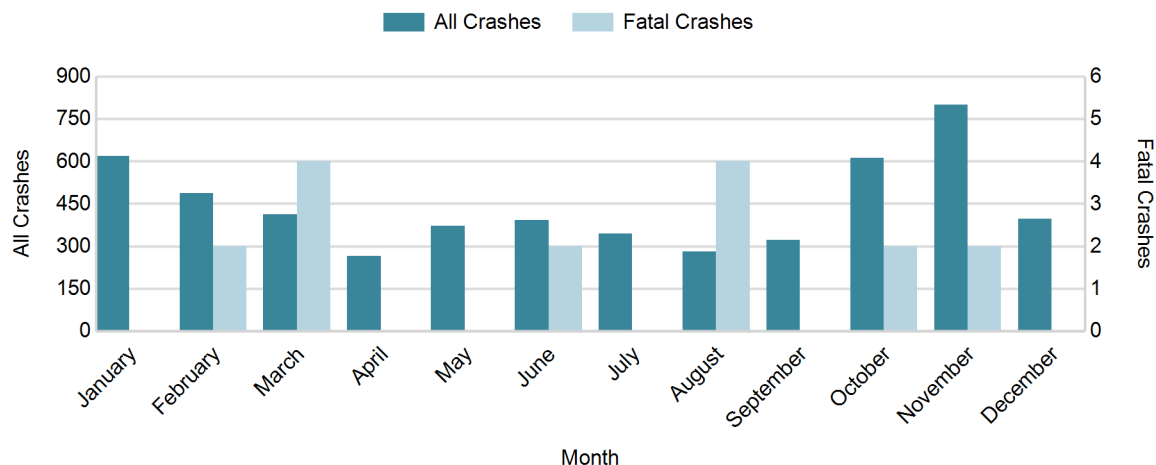
Note: † Indicates that the highest number of total crashes reported in the 5-year period occurred in the same month

## 5-Year Trend - Crashes by Day of Week

Day	2010		2011		2012		2013		2014	
	Total Crashes	Fatal Crashes	Total Crashes	Fatal Crashes	Total Crashes	Fatal Crashes	Total Crashes	Fatal Crashes	Total Crashes	Fatal Crashes
Monday	927	5	881	2	734	4	845	4	706	4
Tuesday	947	6	899	5	749	2	818	1	715	1
Wednesday	955	8	840	0	749	4	780	1	801	1
Thursday	913	0	820	6	784	4	833	3	752	0
Friday	1,017 †	3	933 †	0	1,041 †	4	869 †	1	924 †	4
Saturday	766	3	832	7	752	3	760	2	728	1
Sunday	798	2	800	2	704	5	651	4	676	5
<b>Total</b>	<b>6,323</b>	<b>27</b>	<b>6,005</b>	<b>22</b>	<b>5,513</b>	<b>26</b>	<b>5,556</b>	<b>16</b>	<b>5,302</b>	<b>16</b>

Note: † Indicates that the highest number of total crashes reported in the 5-year period occurred on the same day of the week

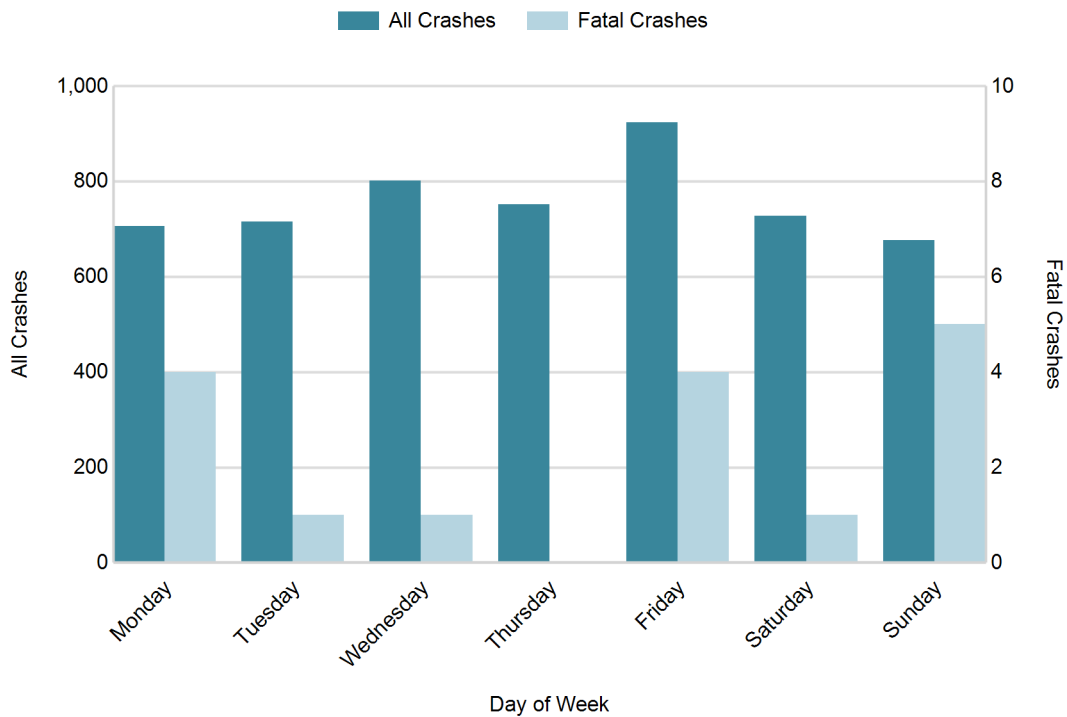
## 2014 Crashes by Month



## 2014 - Crashes by Day of Week

Day	All Crashes		Fatal Crashes		Injury Crashes			PDO Crashes
	Number	% of Total	Number	% of Fatal	A	B	C	Number
Monday	706	13.3	4	25.0	6	22	58	616
Tuesday	715	13.5	1	6.3	12	29	51	622
Wednesday	801	15.1	1	6.3	14	36	63	687
Thursday	752	14.2	0	0.0	6	34	60	652
Friday	924	17.4	4	25.0	23	40	69	788
Saturday	728	13.7	1	6.3	18	40	67	602
Sunday	676	12.7	5	31.3	16	41	51	563
<b>Total</b>	<b>5,302</b>	<b>100.0</b>	<b>16</b>	<b>100.0</b>	<b>95</b>	<b>242</b>	<b>419</b>	<b>4,530</b>

## 2014 Day of Week and Severity

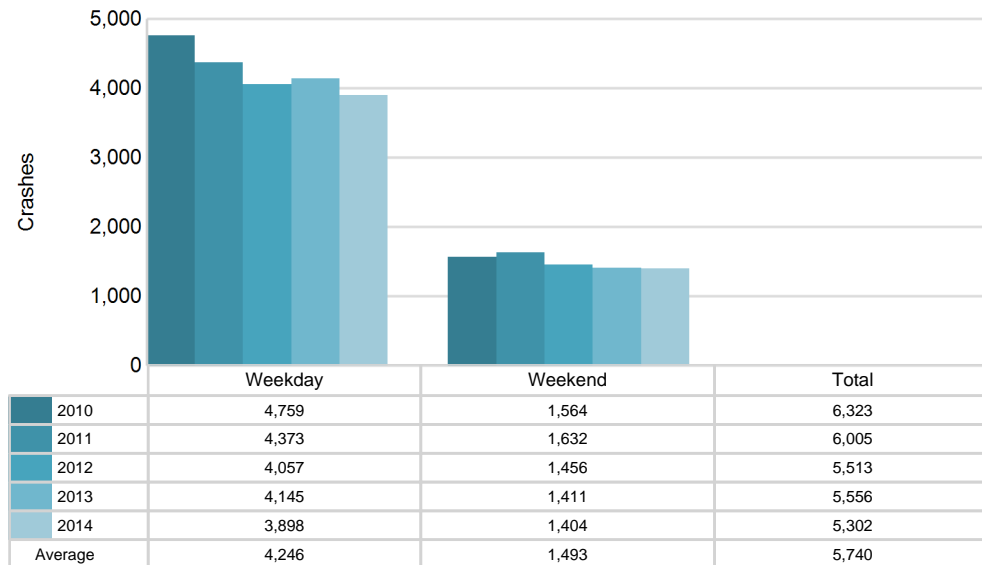


## MSP Post 64 - Lakeview (continued)

### 5-Year Trend - Crashes by Weekday and Weekend

Portion of Week	2010		2011		2012		2013		2014	
	Total Crashes	Fatal Crashes	Total Crashes	Fatal Crashes	Total Crashes	Fatal Crashes	Total Crashes	Fatal Crashes	Total Crashes	Fatal Crashes
Weekday	4,759	22	4,373	13	4,057	18	4,145	10	3,898	10
Weekend	1,564	5	1,632	9	1,456	8	1,411	6	1,404	6
<b>Total</b>	<b>6,323</b>	<b>27</b>	<b>6,005</b>	<b>22</b>	<b>5,513</b>	<b>26</b>	<b>5,556</b>	<b>16</b>	<b>5,302</b>	<b>16</b>

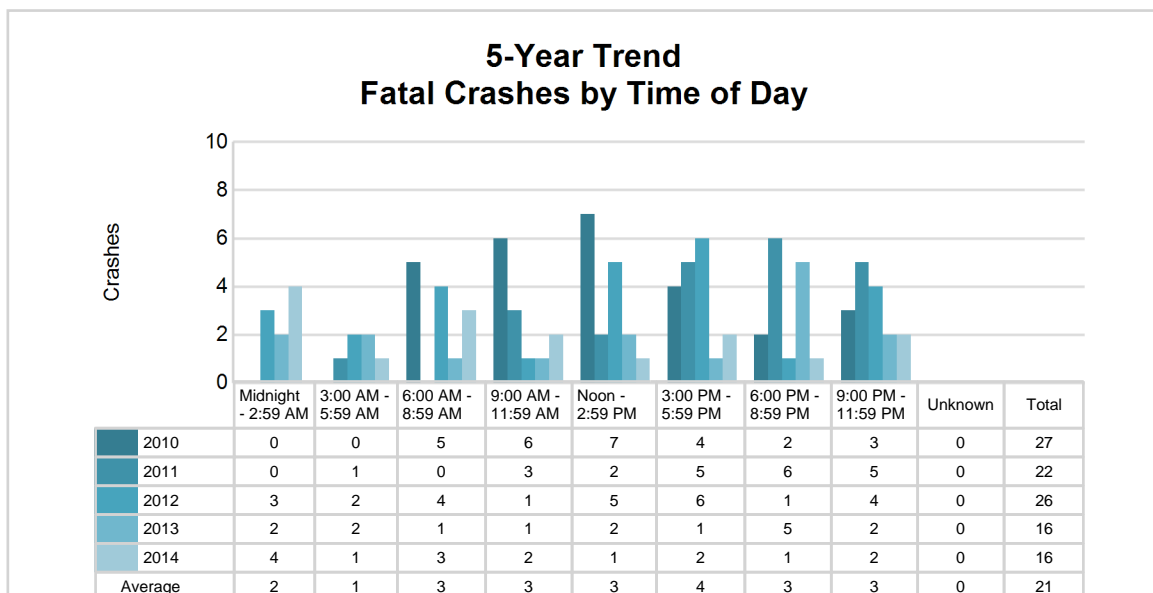
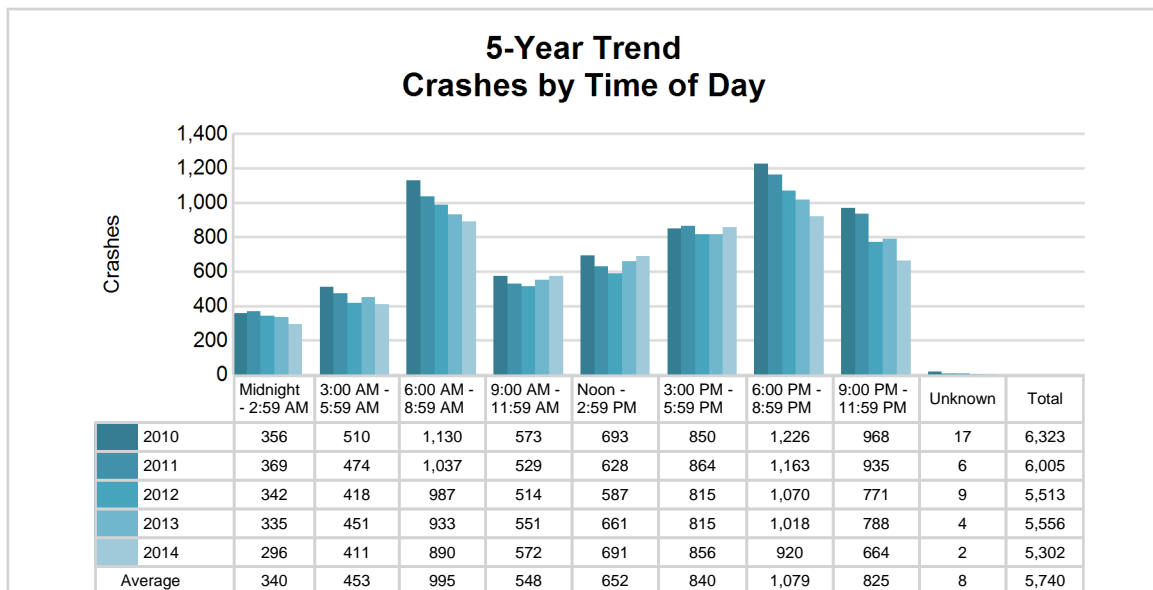
### 5-Year Crash Trends by Weekday (Monday - Friday) and Weekend (Saturday & Sunday)



## 5-Year Trend - Crashes by Time of Day

Time of Day	2010		2011		2012		2013		2014	
	Total Crashes	Fatal Crashes	Total Crashes	Fatal Crashes	Total Crashes	Fatal Crashes	Total Crashes	Fatal Crashes	Total Crashes	Fatal Crashes
Midnight - 2:59 AM	356	0	369	0	342	3	335	2	296	4
3:00 AM - 5:59 AM	510	0	474	1	418	2	451	2	411	1
6:00 AM - 8:59 AM	1,130	5	1,037	0	987	4	933	1	890	3
9:00 AM - 11:59 AM	573	6	529	3	514	1	551	1	572	2
Noon - 2:59 PM	693	7	628	2	587	5	661	2	691	1
3:00 PM - 5:59 PM	850	4	864	5	815	6	815	1	856	2
6:00 PM - 8:59 PM	1,226 †	2	1,163 †	6	1,070 †	1	1,018 †	5	920 †	1
9:00 PM - 11:59 PM	968	3	935	5	771	4	788	2	664	2
Unknown	17	0	6	0	9	0	4	0	2	0
<b>Total</b>	<b>6,323</b>	<b>27</b>	<b>6,005</b>	<b>22</b>	<b>5,513</b>	<b>26</b>	<b>5,556</b>	<b>16</b>	<b>5,302</b>	<b>16</b>

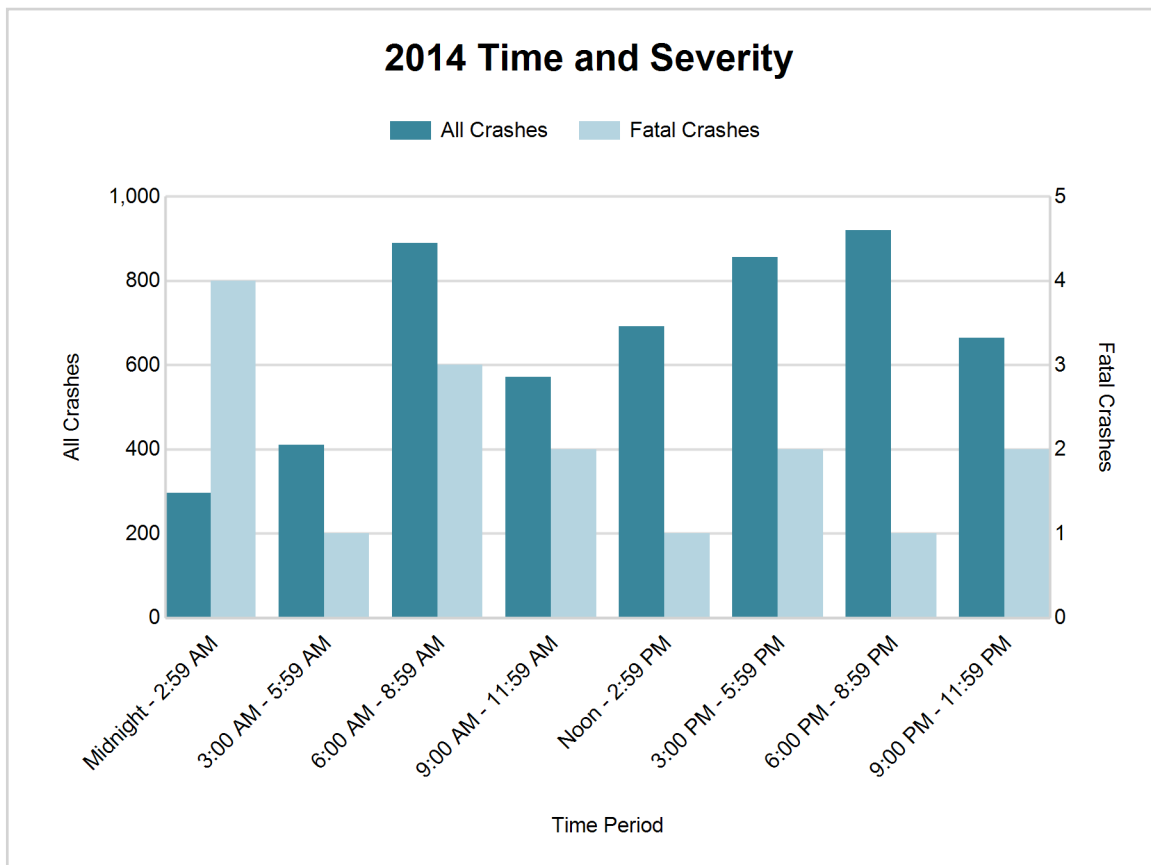
Note: † Indicates that the highest number of total crashes reported in the 5-year period occurred in the same time period



## MSP Post 64 - Lakeview (continued)

## 2014 - Time and Severity

Time of Day	All Crashes		Fatal Crashes		Injury Crashes			PDO Crashes
	Number	% of Total	Number	% of Fatal	A	B	C	Number
Midnight - 2:59 AM	296	5.6	4	25.0	11	11	14	256
3:00 AM - 5:59 AM	411	7.8	1	6.3	4	14	21	371
6:00 AM - 8:59 AM	890	16.8	3	18.8	9	18	67	793
9:00 AM - 11:59 AM	572	10.8	2	12.5	13	22	74	461
Noon - 2:59 PM	691	13.0	1	6.3	18	60	79	533
3:00 PM - 5:59 PM	856	16.1	2	12.5	26	63	79	686
6:00 PM - 8:59 PM	920	17.4	1	6.3	9	40	58	812
9:00 PM - 11:59 PM	664	12.5	2	12.5	5	14	27	616
Unknown	2	0.0	0	0.0	0	0	0	2
<b>Total</b>	<b>5,302</b>	<b>100.0</b>	<b>16</b>	<b>100.0</b>	<b>95</b>	<b>242</b>	<b>419</b>	<b>4,530</b>

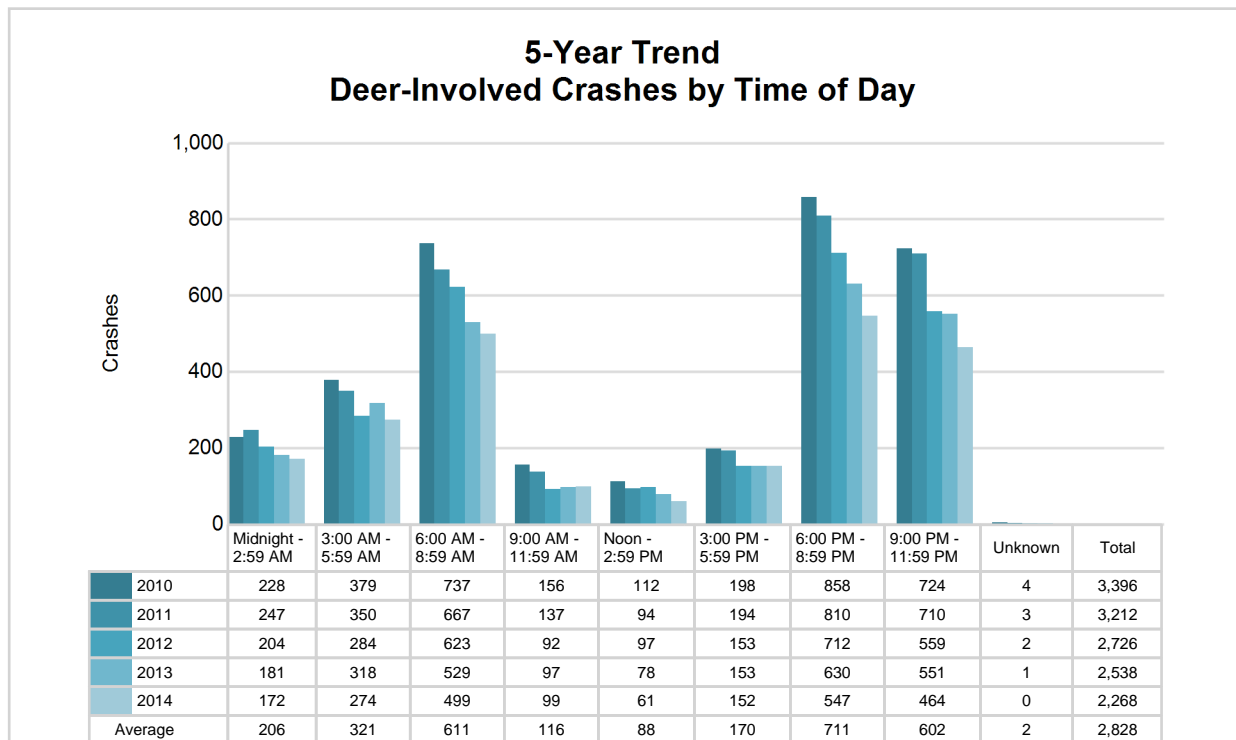


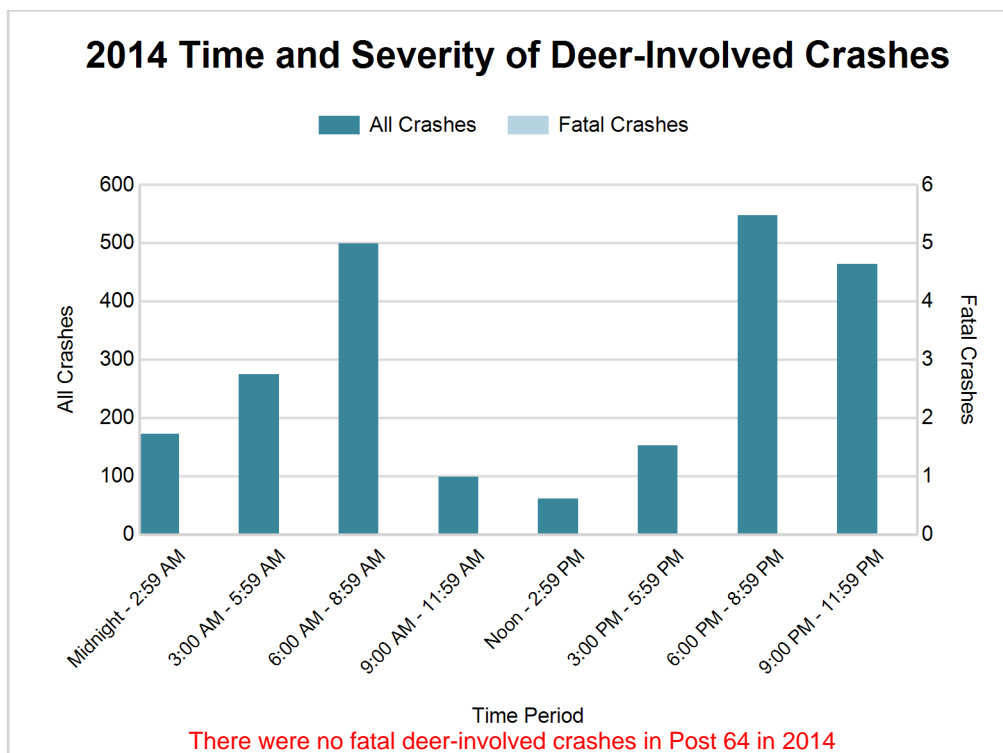


## 5-Year Trend - Deer-Involved Crashes by Time of Day

Time of Day	2010		2011		2012		2013		2014	
	Total Crashes	Fatal Crashes	Total Crashes	Fatal Crashes	Total Crashes	Fatal Crashes	Total Crashes	Fatal Crashes	Total Crashes	Fatal Crashes
Midnight - 2:59 AM	228	0	247	0	204	0	181	0	172	0
3:00 AM - 5:59 AM	379	0	350	0	284	0	318	0	274	0
6:00 AM - 8:59 AM	737	0	667	0	623	0	529	0	499	0
9:00 AM - 11:59 AM	156	0	137	0	92	0	97	0	99	0
Noon - 2:59 PM	112	0	94	0	97	0	78	0	61	0
3:00 PM - 5:59 PM	198	0	194	0	153	0	153	0	152	0
6:00 PM - 8:59 PM	858 †	0	810 †	1	712 †	0	630 †	0	547 †	0
9:00 PM - 11:59 PM	724	0	710	1	559	0	551	0	464	0
Unknown	4	0	3	0	2	0	1	0	0	0
<b>Total</b>	<b>3,396</b>	<b>0</b>	<b>3,212</b>	<b>2</b>	<b>2,726</b>	<b>0</b>	<b>2,538</b>	<b>0</b>	<b>2,268</b>	<b>0</b>

Note: † Indicates that the highest number of total crashes reported in the 5-year period occurred in the same time period





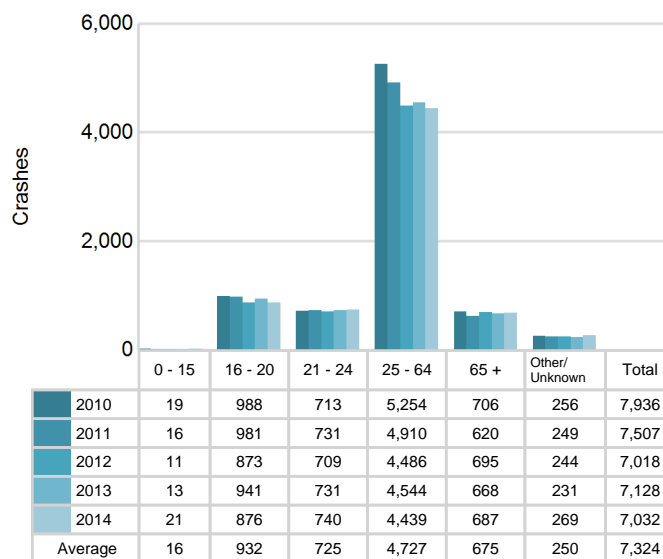
#### 2014 - Reported Motor Vehicle Crashes by County

County	Crashes											Persons	
	Total	Fatal	Injury	Property Damage	Inter-state	US Route	State Route	Local Street	Alcohol-Involved	Drug-Involved	Deer-Involved	Fatalities	Injuries
Gratiot	1,559	4	172	1,383	0	426	277	856	20	6	850	4	247
Ionia	1,587	3	240	1,344	317	0	474	796	52	12	450	3	306
Montcalm	2,156	9	344	1,803	0	170	752	1,234	62	7	968	10	481
<b>Total</b>	<b>5,302</b>	<b>16</b>	<b>756</b>	<b>4,530</b>	<b>317</b>	<b>596</b>	<b>1,503</b>	<b>2,886</b>	<b>134</b>	<b>25</b>	<b>2,268</b>	<b>17</b>	<b>1,034</b>

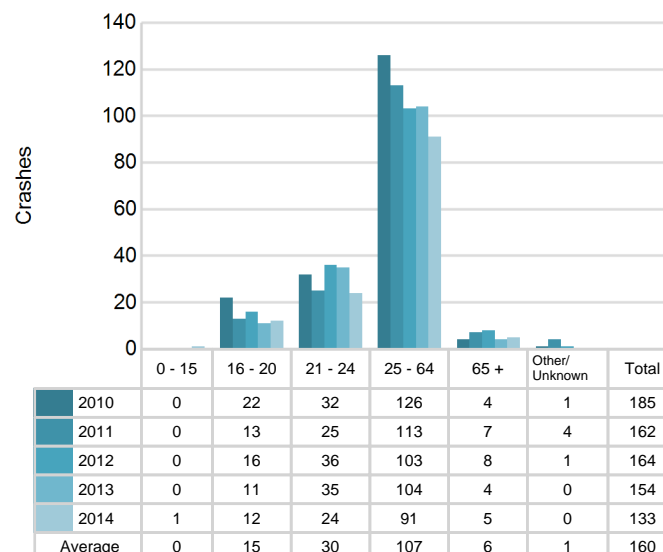
## 5-Year Trend - Drivers in Crashes Coded Drinking by Driver Age

Driver Age	2010		2011		2012		2013		2014	
	Total Drivers in Crashes	Total Drivers Coded Drinking	Total Drivers in Crashes	Total Drivers Coded Drinking	Total Drivers in Crashes	Total Drivers Coded Drinking	Total Drivers in Crashes	Total Drivers Coded Drinking	Total Drivers in Crashes	Total Drivers Coded Drinking
0 - 15	19	0	16	0	11	0	13	0	21	1
16 - 20	988	22	981	13	873	16	941	11	876	12
21 - 24	713	32	731	25	709	36	731	35	740	24
25 - 64	5,254	126	4,910	113	4,486	103	4,544	104	4,439	91
65 +	706	4	620	7	695	8	668	4	687	5
Unknown	256	1	249	4	244	1	231	0	269	0
<b>Total</b>	<b>7,936</b>	<b>185</b>	<b>7,507</b>	<b>162</b>	<b>7,018</b>	<b>164</b>	<b>7,128</b>	<b>154</b>	<b>7,032</b>	<b>133</b>

### 5-Year Trend Total Drivers in Crashes by Age



### 5-Year Trend Total Drivers Coded Drinking by Age



**2014 - Bodily Alcohol Concentration (BAC) Results Among All Vehicle Drivers in Alcohol-Involved Crashes by Age**

Age Group	Drivers				BAC Result Range for Drivers Coded Drinking				
	Total Drivers in Alcohol-Involved Crashes	Total Drivers Tested in all Crashes	Total Drivers Coded Drinking, Tested	Total Drivers Coded Drinking	BAC = 0.00	BAC 0.01 g/dL to 0.07 g/dL	BAC 0.08 g/dL to 0.16 g/dL	BAC 0.17 g/dL and Above	BAC Not Reported
0 - 15	1	2	1	1	0	0	1	0	0
16 - 20	16	22	11	12	2	2	5	1	2
21 - 24	27	22	19	24	0	3	8	4	9
25 - 64	108	111	77	91	5	7	24	26	29
65 +	6	9	5	5	0	1	1	1	2
Unknown	3	0	0	0	0	0	0	0	0
<b>Total</b>	<b>161</b>	<b>166</b>	<b>113</b>	<b>133</b>	<b>7</b>	<b>13</b>	<b>39</b>	<b>32</b>	<b>42</b>

Notes: BAC measured in grams (g) per deciliter (dL).

BAC may not be reported if drivers are not tested or if the results are not available immediately (as in the case of a blood test).

A driver may be coded by the officer as drinking even though no test is administered.

**Alcohol-Involved Crashes**

In 2014, there were 161 drivers in alcohol-involved crashes; 133 (82.6%) of those drivers were coded as had-been-drinking by the officer on the crash form.

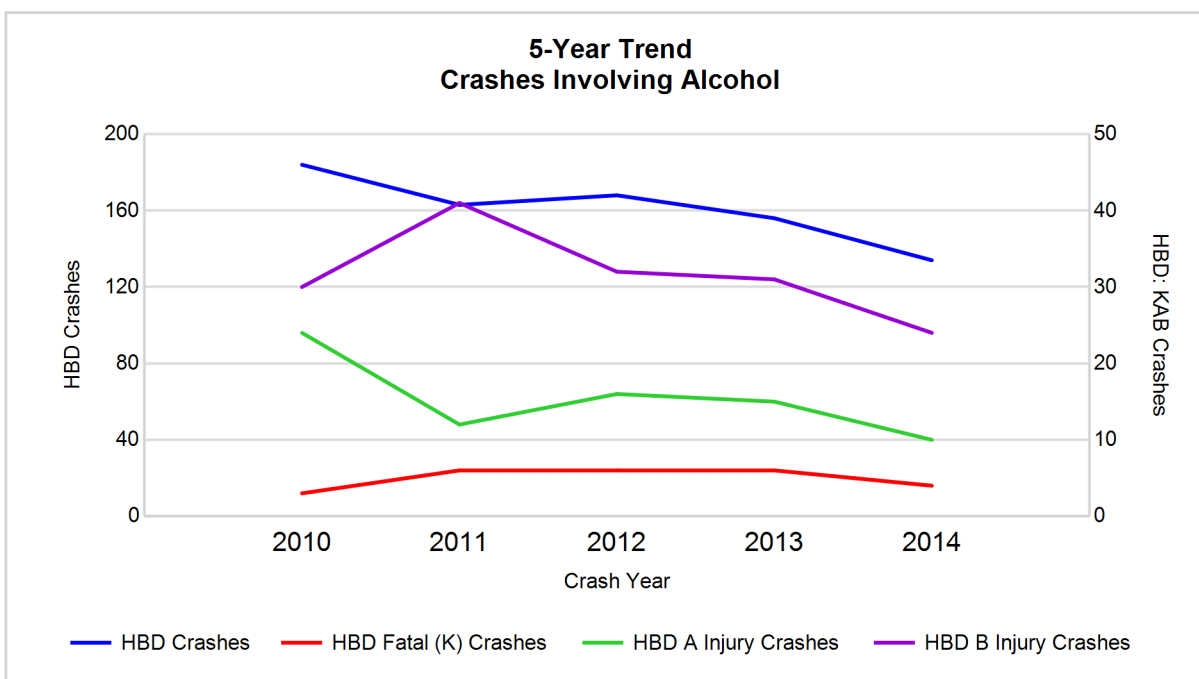
- 71 (53.4%) of the 133 drivers had a blood alcohol concentration (BAC) of 0.08 g/dL (grams per deciliter) or greater, and 32 (45.1%) of the 71 drivers had a BAC at or above 0.17 g/dL.
- 113 (85.0%) of the 133 drivers were coded as had-been-drinking and were tested for alcohol consumption.

**5-Year Trend - Crashes Involving Alcohol**

Year	All Crashes	HBD Crashes	% HBD	Fatal Crashes	HBD Fatal Crashes	% HBD	A Injury Crashes	HBD A Injury Crashes	% HBD	B Injury Crashes	HBD B Injury Crashes	% HBD
2010	6,323	184	2.9	27	3	11.1	141	24	17.0	228	30	13.2
2011	6,005	163	2.7	22	6	27.3	120	12	10.0	267	41	15.4
2012	5,513	168	3.0	26	6	23.1	125	16	12.8	232	32	13.8
2013	5,556	156	2.8	16	6	37.5	107	15	14.0	239	31	13.0
2014	5,302*	134*	2.5*	16	4	25.0	95*	10*	10.5	242	24*	9.9*

Note: \* Indicates that the most recent year is the lowest number or percentage reported in the 5-year period in that column

\*\* Indicates that the most recent year is the highest number or percentage reported in the 5-year period in that column



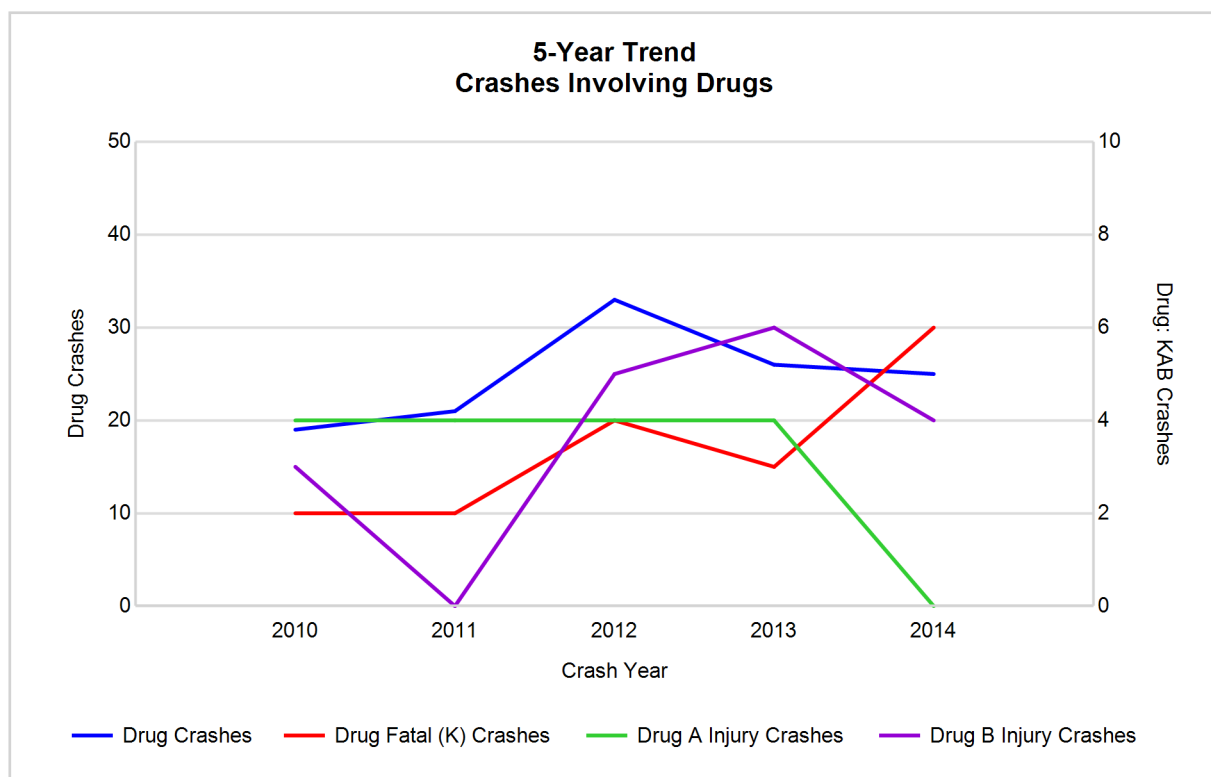
Note: Had-Been-Drinking (HBD)

## 5-Year Trend - Crashes Involving Drugs

Year	All Crashes	Drug Crashes	% Drug	Fatal Crashes	Drug Fatal Crashes	% Drug	A Injury Crashes	Drug A Injury Crashes	% Drug	B Injury Crashes	Drug B Injury Crashes	% Drug
2010	6,323	19	0.3	27	2	7.4	141	4	2.8	228	3	1.3
2011	6,005	21	0.3	22	2	9.1	120	4	3.3	267	0	0.0
2012	5,513	33	0.6	26	4	15.4	125	4	3.2	232	5	2.2
2013	5,556	26	0.5	16	3	18.8	107	4	3.7	239	6	2.5
2014	5,302*	25	0.5	16	6**	37.5**	95*	0*	0.0*	242	4	1.7

Note: \* Indicates that the most recent year is the lowest number or percentage reported in the 5-year period in that column

\*\* Indicates that the most recent year is the highest number or percentage reported in the 5-year period in that column

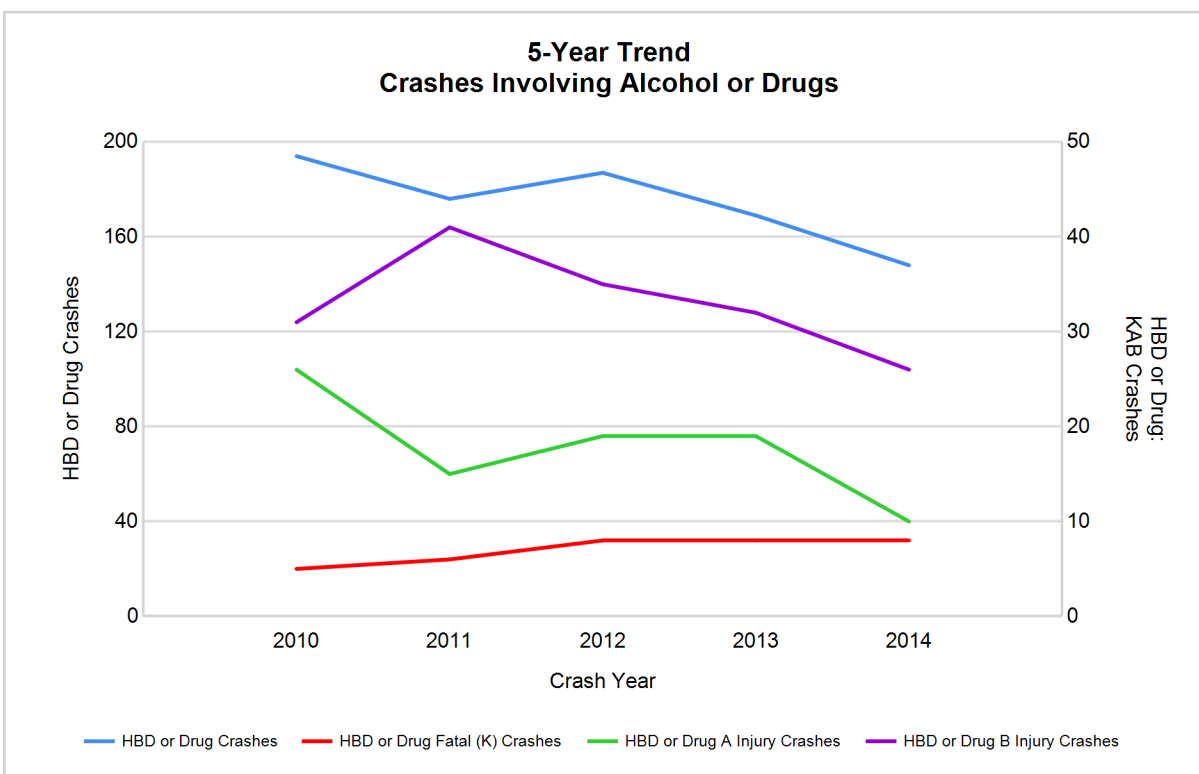


## 5-Year Trend - Crashes Involving Alcohol or Drugs

Year	All Crashes	HBD or Drug Crashes	% HBD or Drug	Fatal Crashes	HBD or Drug Fatal Crashes	% HBD or Drug	A Injury Crashes	HBD or Drug A Injury Crashes	% HBD or Drug	B Injury Crashes	HBD or Drug B Injury Crashes	% HBD or Drug
2010	6,323	194	3.1	27	5	18.5	141	26	18.4	228	31	13.6
2011	6,005	176	2.9	22	6	27.3	120	15	12.5	267	41	15.4
2012	5,513	187	3.4	26	8	30.8	125	19	15.2	232	35	15.1
2013	5,556	169	3.0	16	8	50.0	107	19	17.8	239	32	13.4
2014	5,302*	148*	2.8*	16	8	50.0	95*	10*	10.5*	242	26*	10.7*

Note: \* Indicates that the most recent year is the lowest number or percentage reported in the 5-year period in that column

\*\* Indicates that the most recent year is the highest number or percentage reported in the 5-year period in that column



Note: Had-Been-Drinking (HBD)

# MSP Post 64 - Lakeview (continued)

13

## 2014 - Restraints Worn Among Vehicle Drivers and Injured Passengers by Vehicle Type

Vehicle Type	Total Occupants			Fatalities			A - Incapacitating			B - Non-incapacitating			C - Possible Injury			No Injury		
	Total	Used Restraint	%	Total	Used Restraint	%	Total	Used Restraint	%	Total	Used Restraint	%	Total	Used Restraint	%	Total	Used Restraint	%
Passenger car & station wagon	5,239	4,923	94.0	11	5	45.5	62	53	85.5	190	170	89.5	438	410	93.6	4,415	4,283	97.0
Van & motorhome	198	186	93.9	1	1	100.0	3	2	66.7	6	5	83.3	14	14	100.0	171	164	95.9
Pickup truck	1,417	1,303	92.0	2	0	0.0	23	18	78.3	61	53	86.9	90	85	94.4	1,194	1,147	96.1
Small truck under 10,000 lbs. GVWR	50	46	92.0	0	0	0.0	1	0	0.0	2	1	50.0	3	3	100.0	42	42	100.0
Cycle	62	47	75.8	1	0	0.0	13	10	76.9	27	21	77.8	9	7	77.8	12	9	75.0
Moped	10	5	50.0	0	0	0.0	1	1	100.0	3	0	0.0	4	2	50.0	2	2	100.0
Go Cart	0	0	0.0	0	0	0.0	0	0	0.0	0	0	0.0	0	0	0.0	0	0	0.0
Snowmobile	3	2	66.7	0	0	0.0	0	0	0.0	0	0	0.0	2	2	100.0	1	0	0.0
Off-Road Vehicle (ORV) & All-Terrain Vehicle (ATV)	12	1	8.3	0	0	0.0	3	0	0.0	4	0	0.0	0	0	0.0	5	1	20.0
Other	46	15	32.6	0	0	0.0	2	0	0.0	9	0	0.0	2	0	0.0	31	15	48.4
Truck/bus over 10,000 lbs.	201	176	87.6	0	0	0.0	5	0	0.0	6	5	83.3	14	8	57.1	171	163	95.3
Unknown	68	1	1.5	0	0	0.0	0	0	0.0	0	0	0.0	0	0	0.0	3	1	33.3
<b>Total</b>	<b>7,306</b>	<b>6,705</b>	<b>91.8</b>	<b>15</b>	<b>6</b>	<b>40.0</b>	<b>113</b>	<b>84</b>	<b>74.3</b>	<b>308</b>	<b>255</b>	<b>82.8</b>	<b>576</b>	<b>531</b>	<b>92.2</b>	<b>6,047</b>	<b>5,827</b>	<b>96.4</b>

Note: Restraint Use includes shoulder belt only used, lap belt only used, both lap and shoulder belts used, child restraint used, restraint failure, and helmet worn.

## 2014 - Restraints Worn Among Vehicle Drivers and Injured Passengers by Age

Age Group	Total Occupants			Fatalities			A - Incapacitating			B - Non-incapacitating			C - Possible Injury			No Injury		
	Total	Used Restraint	%	Total	Used Restraint	%	Total	Used Restraint	%	Total	Used Restraint	%	Total	Used Restraint	%	Total	Used Restraint	%
0 - 15	99	76	76.8	1	0	0.0	8	4	50.0	30	24	80.0	44	33	75.0	16	15	93.8
16 - 20	923	879	95.2	3	1	33.3	20	17	85.0	61	51	83.6	94	90	95.7	743	720	96.9
21 - 24	762	725	95.1	1	1	100.0	6	4	66.7	41	32	78.0	52	46	88.5	659	640	97.1
25 - 64	4,541	4,342	95.6	5	1	20.0	71	53	74.6	139	119	85.6	323	304	94.1	3,999	3,865	96.6
65 +	712	680	95.5	5	3	60.0	8	6	75.0	36	29	80.6	62	58	93.5	601	584	97.2
Unknown	269	3	1.1	0	0	0.0	0	0	0.0	1	0	0.0	1	0	0.0	29	3	10.3
<b>Total</b>	<b>7,306</b>	<b>6,705</b>	<b>91.8</b>	<b>15</b>	<b>6</b>	<b>40.0</b>	<b>113</b>	<b>84</b>	<b>74.3</b>	<b>308</b>	<b>255</b>	<b>82.8</b>	<b>576</b>	<b>531</b>	<b>92.2</b>	<b>6,047</b>	<b>5,827</b>	<b>96.4</b>

Note: Restraint Use includes shoulder belt only used, lap belt only used, both lap and shoulder belts used, child restraint used, restraint failure, and helmet worn.

## 5-Year Trend - Restraint Use Among Drivers

Restraint Use	2010			2011			2012			2013			2014		
	Drivers	Fatal Drivers	Injured Drivers	Drivers	Fatal Drivers	Injured Drivers	Drivers	Fatal Drivers	Injured Drivers	Drivers	Fatal Drivers	Injured Drivers	Drivers	Fatal Drivers	Injured Drivers
No belts available	32	0	8	52	0	5	38	0	6	51	0	10	44	0	5
Shoulder belt only used	5	0	0	3	0	1	4	0	0	4	0	2	2	0	1
Lap belt only used	10	0	0	8	0	2	13	0	2	13	0	4	15	1	2
Both lap & shoulder belts used	7,342	15	611	6,882	3	597	6,403	8	606	6,554	8	628	6,425	3	619
No belts used	53	6	35	75	6	32	72	8	36	46	3	28	57	6	24
Child restraint used	0	0	0	1	0	0	0	0	0	0	0	0	0	0	0
Child restraint not used, unavailable or improper use	1	0	0	0	0	0	0	0	0	0	0	0	0	0	0
Restraint failure	0	0	0	4	0	0	0	0	0	3	0	0	1	0	0
Restraint use unknown	145	0	23	180	0	29	174	1	32	165	0	14	146	0	14
Helmet worn	69	2	53	70	3	51	55	1	47	39	1	26	51	0	39
Helmet not worn	6	0	6	7	0	7	18	1	14	24	3	15	25	1	18
Helmet use unknown	1	0	0	0	0	0	5	0	4	1	0	1	5	0	4
Uncoded & errors	272	0	2	225	0	2	236	0	3	228	0	1	261	0	1
<b>Total</b>	<b>7,936</b>	<b>23</b>	<b>738</b>	<b>7,507</b>	<b>12</b>	<b>726</b>	<b>7,018</b>	<b>19</b>	<b>750</b>	<b>7,128</b>	<b>15</b>	<b>729</b>	<b>7,032</b>	<b>11</b>	<b>727</b>

## 5-Year Trend - Restraint Use Among Drivers Coded Drinking

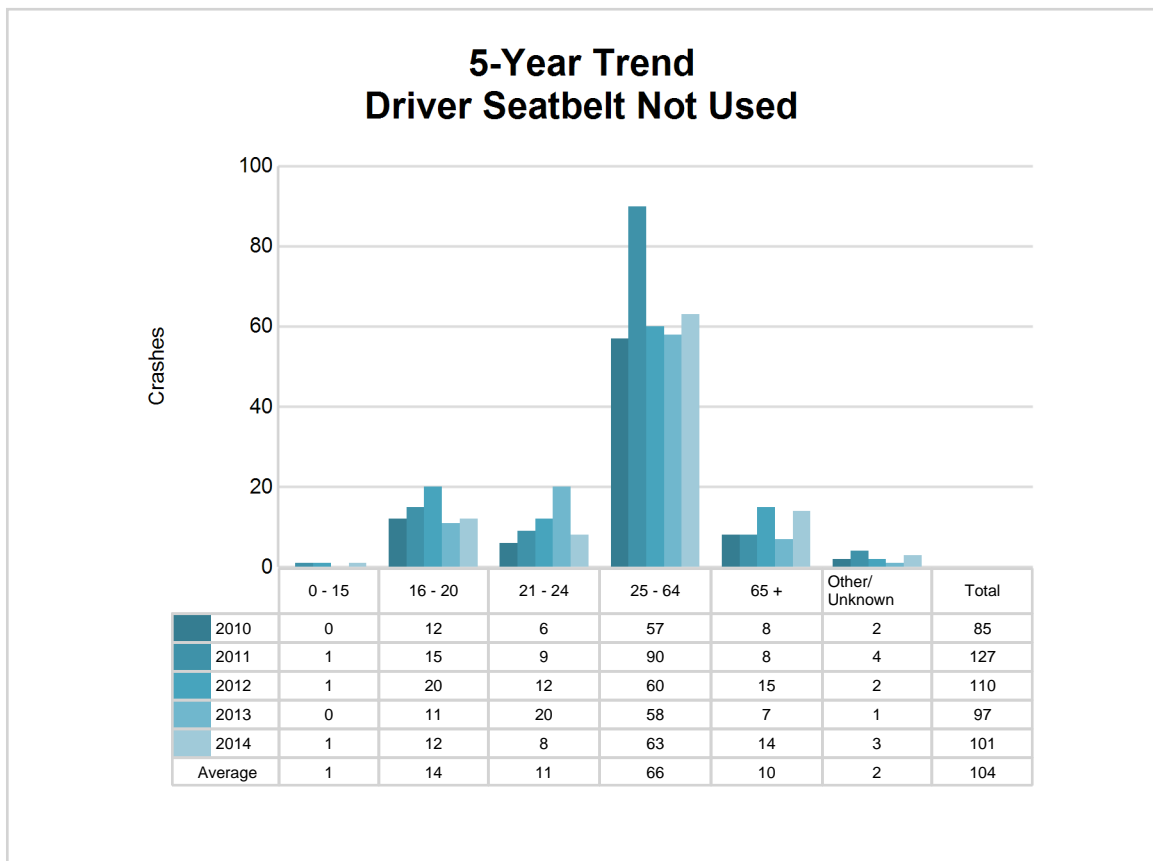
Restraint Use	2010			2011			2012			2013			2014		
	Drivers	Fatal Drivers	Injured Drivers	Drivers	Fatal Drivers	Injured Drivers	Drivers	Fatal Drivers	Injured Drivers	Drivers	Fatal Drivers	Injured Drivers	Drivers	Fatal Drivers	Injured Drivers
No belts available	2	0	1	1	0	1	0	0	0	4	0	2	1	0	0
Shoulder belt only used	0	0	0	0	0	0	0	0	0	0	0	0	0	0	0
Lap belt only used	0	0	0	0	0	0	0	0	0	0	0	0	0	0	0
Both lap & shoulder belts used	135	0	51	112	1	44	106	0	27	97	3	35	96	1	27
No belts used	17	2	13	13	2	6	19	1	14	11	1	9	6	1	4
Child restraint used	0	0	0	0	0	0	0	0	0	0	0	0	0	0	0
Child restraint not used, unavailable or improper use	0	0	0	0	0	0	0	0	0	0	0	0	0	0	0
Restraint failure	0	0	0	0	0	0	0	0	0	1	0	0	0	0	0
Restraint use unknown	24	0	9	28	0	9	28	0	11	33	0	6	23	0	8
Helmet worn	4	0	3	5	1	4	8	0	7	2	0	2	1	0	1
Helmet not worn	1	0	1	2	0	2	2	0	1	5	1	4	6	1	4
Helmet use unknown	0	0	0	0	0	0	0	0	0	0	0	0	0	0	0
Uncoded & errors	2	0	0	1	0	0	1	0	0	1	0	0	0	0	0
<b>Total</b>	<b>185</b>	<b>2</b>	<b>78</b>	<b>162</b>	<b>4</b>	<b>66</b>	<b>164</b>	<b>1</b>	<b>60</b>	<b>154</b>	<b>5</b>	<b>58</b>	<b>133</b>	<b>3</b>	<b>44</b>



## 5-Year Trend - Seatbelt Not Used Among Drivers by Age

Age Group	2010			2011			2012			2013			2014		
	Drivers	Fatal Drivers	Injured Drivers	Drivers	Fatal Drivers	Injured Drivers	Drivers	Fatal Drivers	Injured Drivers	Drivers	Fatal Drivers	Injured Drivers	Drivers	Fatal Drivers	Injured Drivers
0 - 15	0	0	0	1	0	1	1	0	1	0	0	0	1	1	0
16 - 20	12	0	10	15	1	10	20	0	12	11	0	6	12	0	4
21 - 24	6	0	5	9	0	2	12	1	6	20	0	9	8	0	4
25 - 64	57	4	24	90	4	21	60	4	20	58	3	21	63	3	17
65 +	8	2	4	8	1	3	15	3	3	7	0	1	14	2	4
Unknown	2	0	0	4	0	0	2	0	0	1	0	1	3	0	0
<b>Total</b>	<b>85</b>	<b>6</b>	<b>43</b>	<b>127</b>	<b>6</b>	<b>37</b>	<b>110</b>	<b>8</b>	<b>42</b>	<b>97</b>	<b>3</b>	<b>38</b>	<b>101</b>	<b>6</b>	<b>29</b>

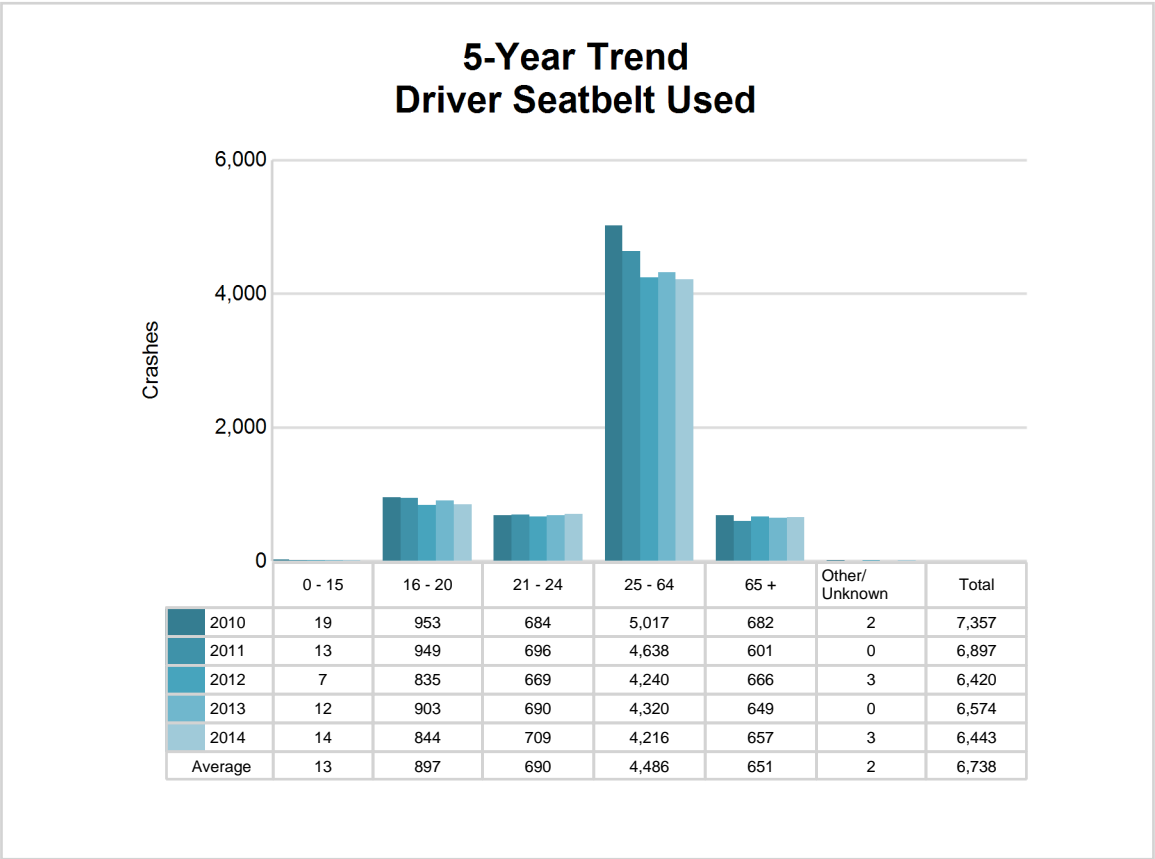
Note: Seatbelt Not Used includes no belts available or no belts used.

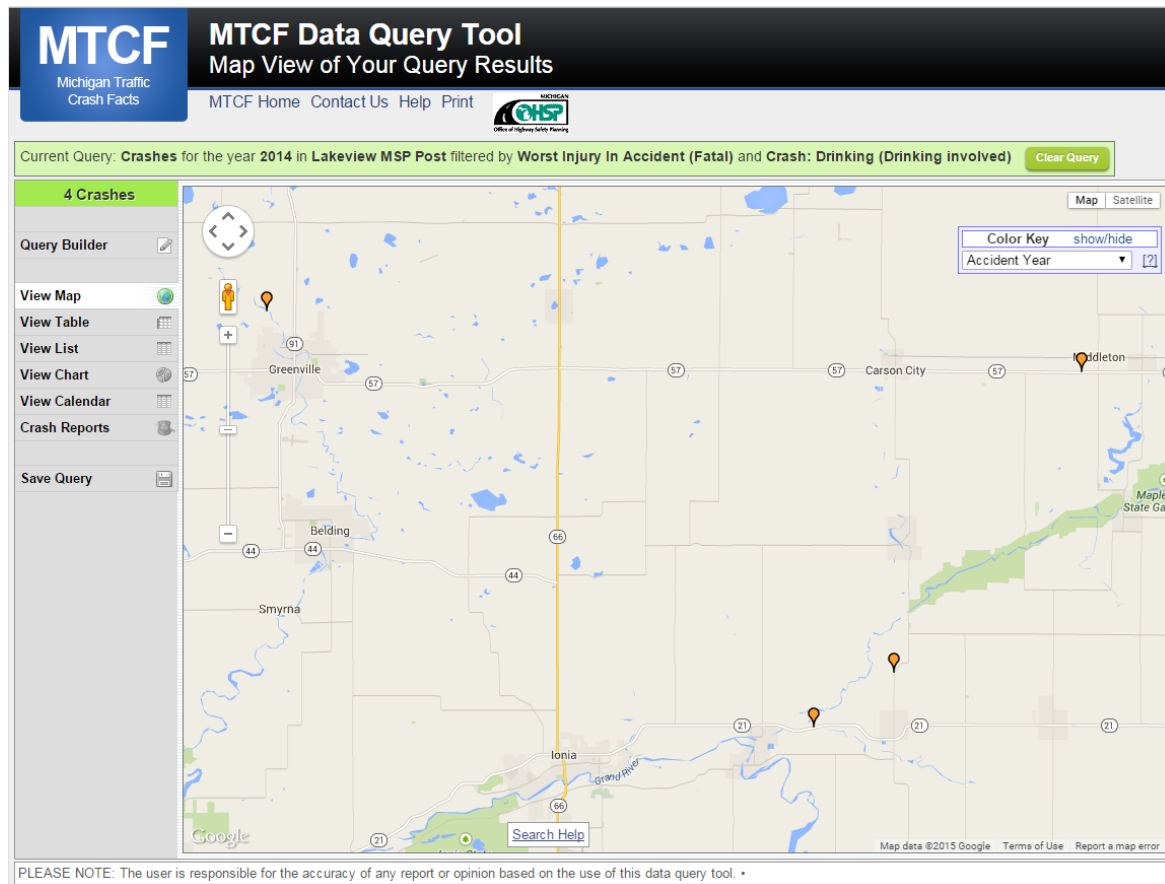


5-Year Trend - Seatbelt Used Among Drivers by Age

Age Group	2010			2011			2012			2013			2014		
	Drivers	Fatal Drivers	Injured Drivers	Drivers	Fatal Drivers	Injured Drivers	Drivers	Fatal Drivers	Injured Drivers	Drivers	Fatal Drivers	Injured Drivers	Drivers	Fatal Drivers	Injured Drivers
0 - 15	19	0	5	13	0	1	7	0	1	12	0	2	14	0	0
16 - 20	953	5	129	949	0	116	835	0	107	903	1	106	844	0	126
21 - 24	684	0	66	696	1	71	669	1	76	690	0	78	709	1	66
25 - 64	5,017	6	352	4,638	1	345	4,240	5	354	4,320	3	380	4,216	1	358
65 +	682	4	59	601	1	67	666	2	70	649	4	68	657	2	72
Unknown	2	0	0	0	0	0	3	0	0	0	0	0	3	0	0
Total	7,357	15	611	6,897	3	600	6,420	8	608	6,574	8	634	6,443	4	622

Note: Seatbelt Used includes shoulder belt only used, lap belt only used, both lap and shoulder belts used, and restraint failure.





The picture above represents all 2014 alcohol-involved fatal crashes in Post 64.

In 2014, there were 134 alcohol-involved crashes in Post 64:

- 4 K - Fatal Crashes
- 10 A - Incapacitating Injury Crashes
- 24 B - Non-incapacitating Injury Crashes
- 15 C - Possible Injury Crashes
- 81 O - Property Damage Only/No Injury Crashes

### Office of Highway Safety Planning

333 South Grand Avenue  
P.O. Box 30634  
Lansing, Michigan 48909  
Phone: (517) 241-2500  
Fax: (517) 241-2501

Find us on the web:  
[MichiganTrafficCrashFacts.org](http://MichiganTrafficCrashFacts.org)

