



2014

**MTCF**  
Michigan Traffic  
Crash Facts

# Michigan Traffic Crash Facts

## Reporting Criteria

Please pay particular attention to the wording when interpreting the three levels of data gathered for this report.

### Crash

The Crash Level analyzes data related to crash events and returns one result per crash.

Examples: Time, weather, and location.

### Units

The Units Level analyzes the experience of the units in the crash and returns one result per vehicle, driver, pedestrian, bicyclist, or train.

Examples: Vehicle type, driver condition, and unit events.

### People

The People Level analyzes the experience of the people involved in the crash and returns one result per occupant/person/party.

Examples: Age, injury severity, and seat belt or helmet use.

### **KABCO Injury Indicator:**

K = Killed

A = Incapacitating Injury

B = Non-incapacitating Injury

C = Possible Injury

O = No Injury

Property Damage Only (PDO)



## Keweenaw County

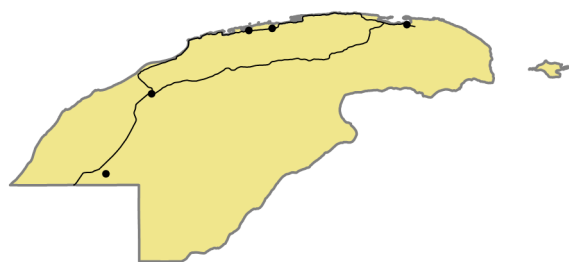
### 2014 Traffic Crash Data & 2010-2014 5-Year Trends



### Sources:

The crashes in this report occurred on public roadways in Michigan and resulted in injuries, fatalities, or property damage (with \$1,000 as a reporting threshold). The information was gathered from Michigan Traffic Crash Report Forms (UD-10) submitted by local police departments, sheriff's offices, and the Michigan State Police. Other related information was obtained from the departments of Transportation, State, and Community Health.

This page left intentionally blank



Crashes by most severe injury (mapped/actual)

- ▲ K - Fatal (0/0)
- A - Incapacitating (5/5)

## Keweenaw County

In 2014:

There were 97 drivers involved in 77 motor vehicle crashes in Keweenaw County. Of those crashes, 0 were classified as fatal, resulting in 0 fatalities. An additional 23 persons were injured.

Keweenaw County experienced the highest number of motor vehicle crashes (16) in July. Keweenaw County did not experience a fatal crash in 2014.

Keweenaw County driver statistics indicate 5.4 percent of licensed drivers were age 16-20, and 11.3 percent of drivers in crashes were also in that age group.

## 2014 - Crashes and Injuries by Month

Month	Crashes				Persons	
	Total	Fatal	Injury	Property Damage Only (PDO)	Fatalities	Injuries
January	5	0	0	5	0	0
February	6	0	0	6	0	0
March	3	0	2	1	0	2
April	4	0	0	4	0	0
May	7	0	1	6	0	1
June	6	0	1	5	0	1
July	16	0	10	6	0	15
August	4	0	1	3	0	2
September	2	0	0	2	0	0
October	5	0	0	5	0	0
November	8	0	0	8	0	0
December	11	0	1	10	0	2
<b>Total</b>	<b>77</b>	<b>0</b>	<b>16</b>	<b>61</b>	<b>0</b>	<b>23</b>

## 2014 - Driver Statistics

Age Group	Statewide			Driver Rates	
	2014 Population	Licensed Drivers	Drivers in Crashes	Per 10k Population	Per 10k Licensed
0 - 15	342	10	0	--	--
16 - 20	96	98	11	1,145.8	1,122.4
21 - 24	68	69	14	2,058.8	2,029.0
25 - 64	1,027	989	42	409.0	424.7
65 +	684	636	26	380.1	408.8
Unknown	--	--	4	--	--
<b>Total</b>	<b>2,217</b>	<b>1,802</b>	<b>97</b>	<b>437.5</b>	<b>538.3</b>

## 2014 - Vehicles in Crashes

Vehicle Type	Motor Vehicles		Fatal Crashes		Injury Crashes	PDO Crashes
	Number of Vehicles	% of Total	Number	% of Total	Number	Number
Passenger car & station wagon	59	60.8	0	0.0	8	51
Van & motorhome	4	4.1	0	0.0	1	3
Pickup truck	17	17.5	0	0.0	0	17
Small truck under 10,000 lbs. GVWR	4	4.1	0	0.0	2	2
Cycle	9	9.3	0	0.0	8	1
Moped	0	0.0	0	0.0	0	0
Go Cart	0	0.0	0	0.0	0	0
Snowmobile	1	1.0	0	0.0	0	1
Off-Road Vehicle (ORV) & All-Terrain Vehicle (ATV)	0	0.0	0	0.0	0	0
Other	0	0.0	0	0.0	0	0
Truck/bus over 10,000 lbs.	2	2.1	0	0.0	0	2
Unknown	1	1.0	0	0.0	0	1
<b>Total</b>	<b>97</b>	<b>100.0</b>	<b>0</b>	<b>0.0</b>	<b>19</b>	<b>78</b>

## 5-Year Trend - Crashes by Month

Month	2010		2011		2012		2013		2014	
	Total Crashes	Fatal Crashes	Total Crashes	Fatal Crashes	Total Crashes	Fatal Crashes	Total Crashes	Fatal Crashes	Total Crashes	Fatal Crashes
January	3	0	11	0	5	0	16	0	5	0
February	5	0	6	0	3	0	9	0	6	0
March	1	0	2	1	7	0	5	0	3	0
April	4	0	6	0	8	0	7	0	4	0
May	5	0	5	0	6	1	6	0	7	0
June	4	0	4	0	13	0	5	0	6	0
July	9	0	9	0	13	0	9	0	16	0
August	8	0	10	0	12	0	3	0	4	0
September	9	0	5	0	8	0	6	0	2	0
October	4	1	9	0	9	0	2	0	5	0
November	7	0	9	1	6	0	9	0	8	0
December	5	0	5	0	11	0	11	0	11	0
<b>Total</b>	<b>64</b>	<b>1</b>	<b>81</b>	<b>2</b>	<b>101</b>	<b>1</b>	<b>88</b>	<b>0</b>	<b>77</b>	<b>0</b>

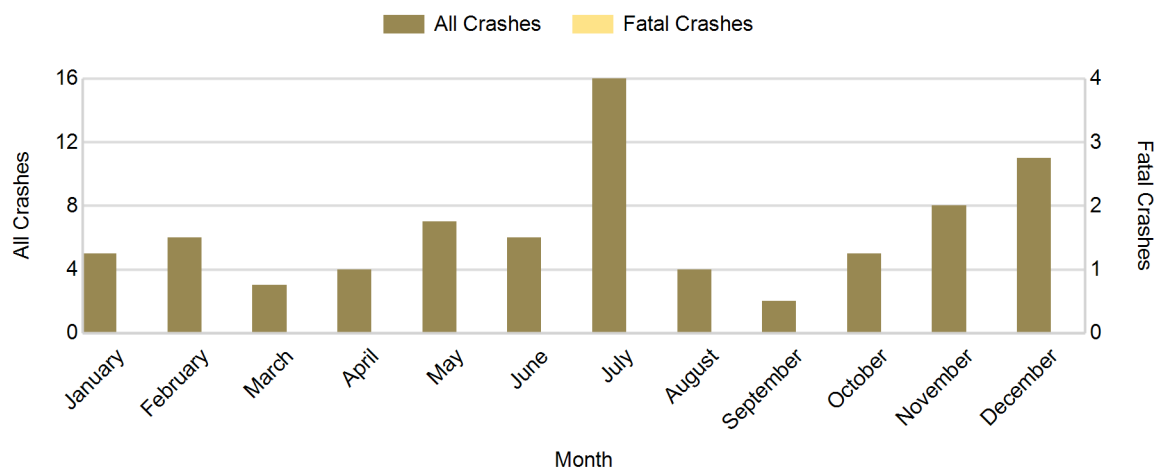
Note: † Indicates that the highest number of total crashes reported in the 5-year period occurred in the same month

## 5-Year Trend - Crashes by Day of Week

Day	2010		2011		2012		2013		2014	
	Total Crashes	Fatal Crashes	Total Crashes	Fatal Crashes	Total Crashes	Fatal Crashes	Total Crashes	Fatal Crashes	Total Crashes	Fatal Crashes
Monday	6	0	11	0	10	0	16	0	8	0
Tuesday	13	0	4	0	17	0	10	0	9	0
Wednesday	6	0	14	0	15	0	11	0	13	0
Thursday	7	0	12	1	14	0	9	0	11	0
Friday	8	0	10	0	16	0	7	0	8	0
Saturday	14	1	16	1	15	0	13	0	17	0
Sunday	10	0	14	0	14	1	22	0	11	0
<b>Total</b>	<b>64</b>	<b>1</b>	<b>81</b>	<b>2</b>	<b>101</b>	<b>1</b>	<b>88</b>	<b>0</b>	<b>77</b>	<b>0</b>

Note: † Indicates that the highest number of total crashes reported in the 5-year period occurred on the same day of the week

## 2014 Crashes by Month

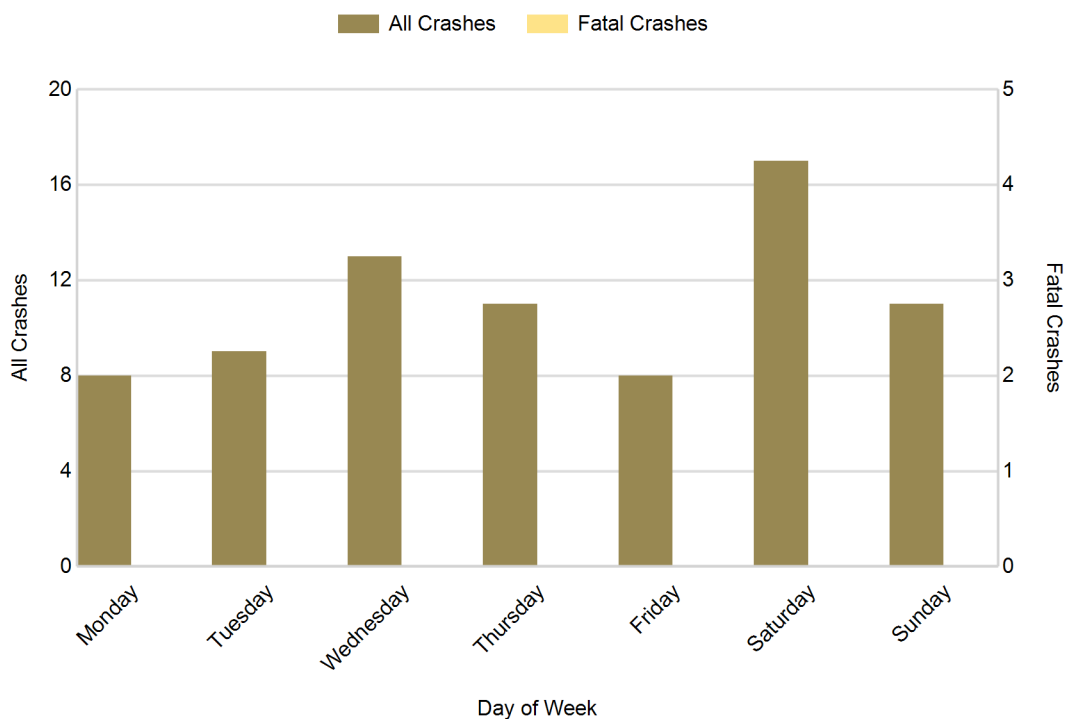


There were no fatal crashes in Keweenaw County in 2014

2014 - Crashes by Day of Week

Day	All Crashes		Fatal Crashes		Injury Crashes			PDO Crashes
	Number	% of Total	Number	% of Fatal	A	B	C	Number
Monday	8	10.4	0	0.0	2	0	0	6
Tuesday	9	11.7	0	0.0	0	0	0	9
Wednesday	13	16.9	0	0.0	0	3	0	10
Thursday	11	14.3	0	0.0	0	2	0	9
Friday	8	10.4	0	0.0	1	1	0	6
Saturday	17	22.1	0	0.0	1	1	2	13
Sunday	11	14.3	0	0.0	1	0	2	8
<b>Total</b>	<b>77</b>	<b>100.0</b>	<b>0</b>	<b>0.0</b>	<b>5</b>	<b>7</b>	<b>4</b>	<b>61</b>

2014 Day of Week and Severity

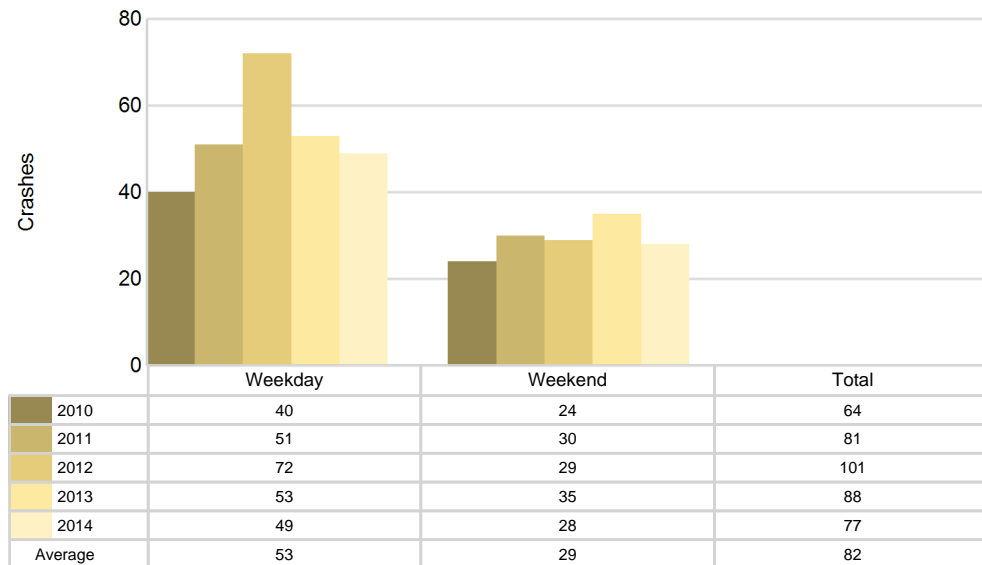


There were no fatal crashes in Keweenaw County in 2014

## 5-Year Trend - Crashes by Weekday and Weekend

Portion of Week	2010		2011		2012		2013		2014	
	Total Crashes	Fatal Crashes	Total Crashes	Fatal Crashes	Total Crashes	Fatal Crashes	Total Crashes	Fatal Crashes	Total Crashes	Fatal Crashes
Weekday	40	0	51	1	72	0	53	0	49	0
Weekend	24	1	30	1	29	1	35	0	28	0
<b>Total</b>	<b>64</b>	<b>1</b>	<b>81</b>	<b>2</b>	<b>101</b>	<b>1</b>	<b>88</b>	<b>0</b>	<b>77</b>	<b>0</b>

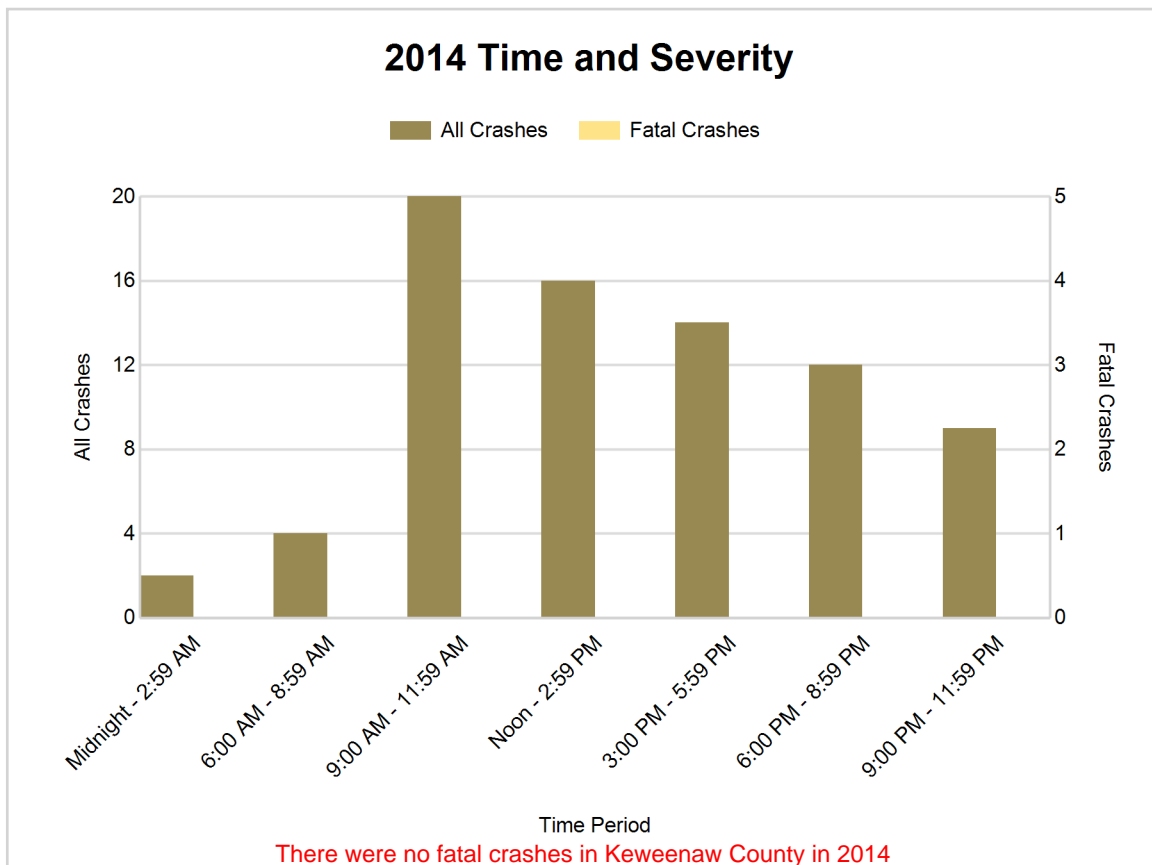
### 5-Year Crash Trends by Weekday (Monday - Friday) and Weekend (Saturday & Sunday)





## 2014 - Time and Severity

Time of Day	All Crashes		Fatal Crashes		Injury Crashes			PDO Crashes
	Number	% of Total	Number	% of Fatal	A	B	C	Number
Midnight - 2:59 AM	2	2.6	0	0.0	0	0	0	2
3:00 AM - 5:59 AM	0	0.0	0	0.0	0	0	0	0
6:00 AM - 8:59 AM	4	5.2	0	0.0	0	0	0	4
9:00 AM - 11:59 AM	20	26.0	0	0.0	1	1	0	18
Noon - 2:59 PM	16	20.8	0	0.0	0	2	2	12
3:00 PM - 5:59 PM	14	18.2	0	0.0	2	3	1	8
6:00 PM - 8:59 PM	12	15.6	0	0.0	2	1	0	9
9:00 PM - 11:59 PM	9	11.7	0	0.0	0	0	1	8
Unknown	0	0.0	0	0.0	0	0	0	0
<b>Total</b>	<b>77</b>	<b>100.0</b>	<b>0</b>	<b>0.0</b>	<b>5</b>	<b>7</b>	<b>4</b>	<b>61</b>

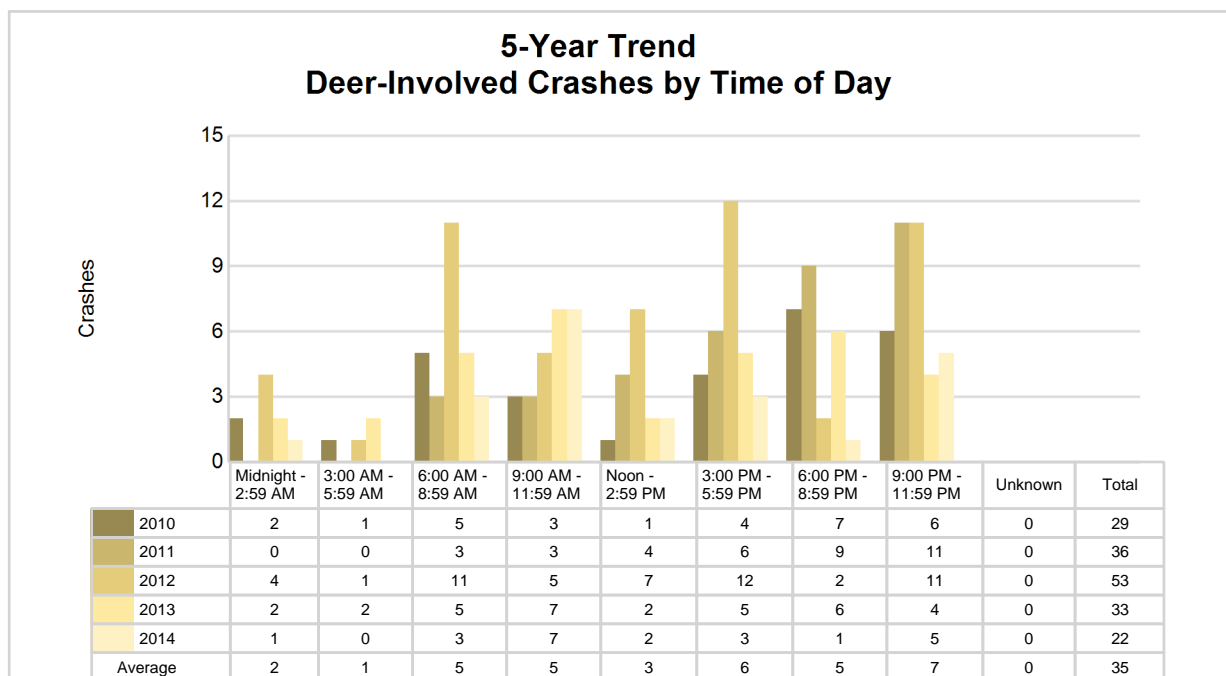




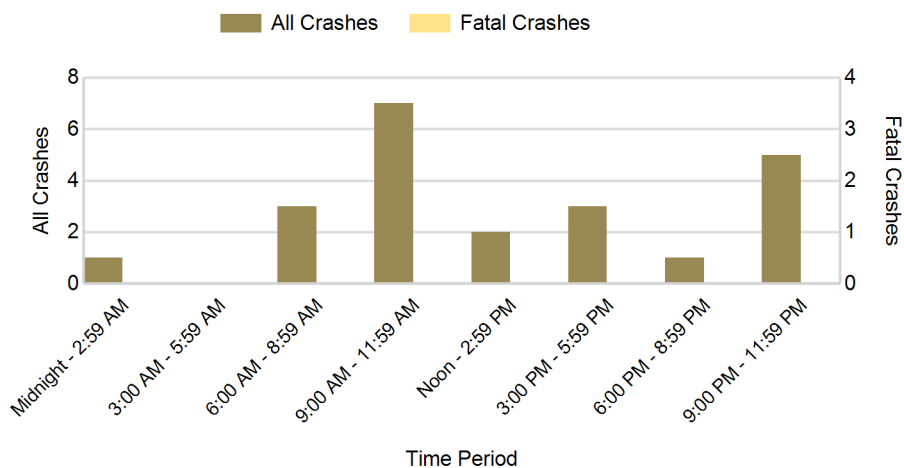
## 5-Year Trend - Deer-Involved Crashes by Time of Day

Time of Day	2010		2011		2012		2013		2014	
	Total Crashes	Fatal Crashes	Total Crashes	Fatal Crashes	Total Crashes	Fatal Crashes	Total Crashes	Fatal Crashes	Total Crashes	Fatal Crashes
Midnight - 2:59 AM	2	0	0	0	4	0	2	0	1	0
3:00 AM - 5:59 AM	1	0	0	0	1	0	2	0	0	0
6:00 AM - 8:59 AM	5	0	3	0	11	0	5	0	3	0
9:00 AM - 11:59 AM	3	0	3	0	5	0	7	0	7	0
Noon - 2:59 PM	1	0	4	0	7	0	2	0	2	0
3:00 PM - 5:59 PM	4	0	6	0	12	0	5	0	3	0
6:00 PM - 8:59 PM	7	0	9	0	2	0	6	0	1	0
9:00 PM - 11:59 PM	6	0	11	0	11	0	4	0	5	0
Unknown	0	0	0	0	0	0	0	0	0	0
<b>Total</b>	<b>29</b>	<b>0</b>	<b>36</b>	<b>0</b>	<b>53</b>	<b>0</b>	<b>33</b>	<b>0</b>	<b>22</b>	<b>0</b>

Note: † Indicates that the highest number of total crashes reported in the 5-year period occurred in the same time period



## 2014 Time and Severity of Deer-Involved Crashes



There were no fatal deer-involved crashes in Keweenaw County in 2014

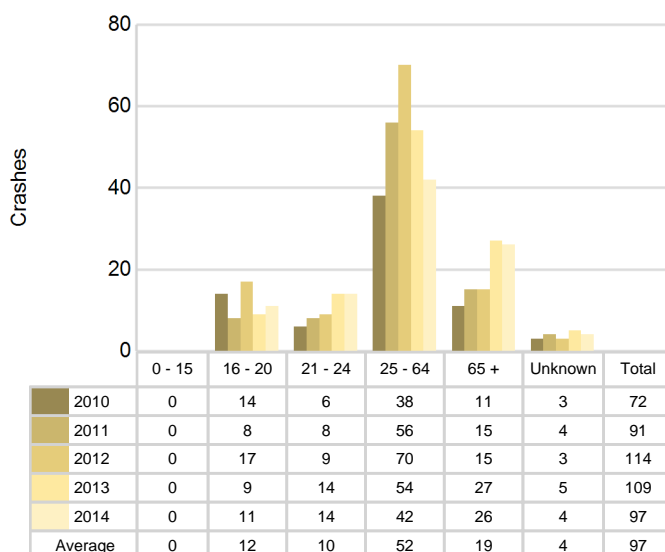
## 2014 - Reported Motor Vehicle Crashes by Municipality

Municipality	Crashes											Persons	
	Total	Fatal	Injury	Property Damage	Inter-state	US Route	State Route	Local Street	Alcohol-Involved	Drug-Involved	Deer-Involved	Fatalities	Injuries
Ahmeek	0	0	0	0	0	0	0	0	0	0	0	0	0
Allouez Twp.	32	0	4	28	0	16	3	13	2	0	11	0	4
Eagle Harbor Twp.	13	0	4	9	0	2	5	6	2	0	3	0	9
Grant Twp.	16	0	5	11	0	7	0	9	0	0	2	0	5
Houghton Twp.	10	0	2	8	0	4	3	3	1	0	4	0	3
Sherman Twp.	6	0	1	5	0	0	0	6	1	0	2	0	2
Unknown Community	0	0	0	0	0	0	0	0	0	0	0	0	0
<b>Total</b>	<b>77</b>	<b>0</b>	<b>16</b>	<b>61</b>	<b>0</b>	<b>29</b>	<b>11</b>	<b>37</b>	<b>6</b>	<b>0</b>	<b>22</b>	<b>0</b>	<b>23</b>

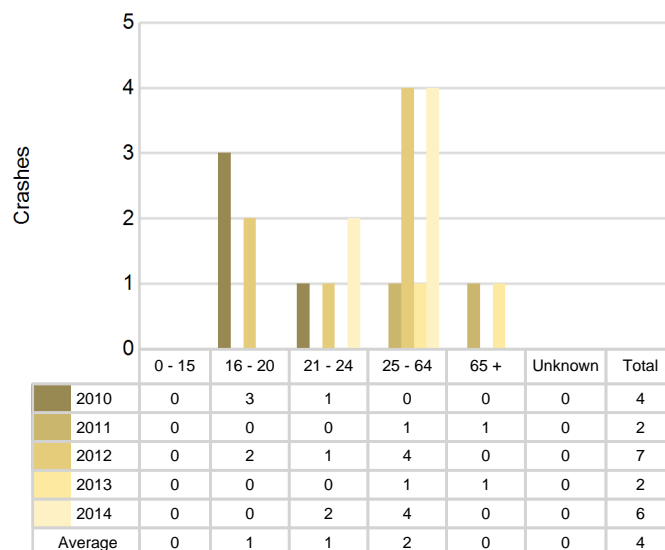
## 5-Year Trend - Drivers in Crashes Coded Drinking by Driver Age

Driver Age	2010		2011		2012		2013		2014	
	Total Drivers in Crashes	Total Drivers Coded Drinking	Total Drivers in Crashes	Total Drivers Coded Drinking	Total Drivers in Crashes	Total Drivers Coded Drinking	Total Drivers in Crashes	Total Drivers Coded Drinking	Total Drivers in Crashes	Total Drivers Coded Drinking
0 - 15	0	0	0	0	0	0	0	0	0	0
16 - 20	14	3	8	0	17	2	9	0	11	0
21 - 24	6	1	8	0	9	1	14	0	14	2
25 - 64	38	0	56	1	70	4	54	1	42	4
65 +	11	0	15	1	15	0	27	1	26	0
Unknown	3	0	4	0	3	0	5	0	4	0
<b>Total</b>	<b>72</b>	<b>4</b>	<b>91</b>	<b>2</b>	<b>114</b>	<b>7</b>	<b>109</b>	<b>2</b>	<b>97</b>	<b>6</b>

### 5-Year Trend Total Drivers in Crashes by Age



### 5-Year Trend Total Drivers Coded Drinking by Age



**2014 - Bodily Alcohol Concentration (BAC) Results Among All Vehicle Drivers in Alcohol-Involved Crashes by Age**

Age Group	Drivers				BAC Result Range for Drivers Coded Drinking				
	Total Drivers in Alcohol-Involved Crashes	Total Drivers Tested in all Crashes	Total Drivers Coded Drinking, Tested	Total Drivers Coded Drinking	BAC = 0.00	BAC 0.01 g/dL to 0.07 g/dL	BAC 0.08 g/dL to 0.16 g/dL	BAC 0.17 g/dL and Above	BAC Not Reported
0 - 15	0	0	0	0	0	0	0	0	0
16 - 20	0	0	0	0	0	0	0	0	0
21 - 24	2	1	1	2	0	1	1	0	0
25 - 64	4	4	4	4	0	1	1	1	1
65 +	0	0	0	0	0	0	0	0	0
Unknown	0	0	0	0	0	0	0	0	0
<b>Total</b>	<b>6</b>	<b>5</b>	<b>5</b>	<b>6</b>	<b>0</b>	<b>2</b>	<b>2</b>	<b>1</b>	<b>1</b>

Notes: BAC measured in grams (g) per deciliter (dL).

BAC may not be reported if drivers are not tested or if the results are not available immediately (as in the case of a blood test).

A driver may be coded by the officer as drinking even though no test is administered.

**Alcohol-Involved Crashes**

In 2014, there were 6 drivers in alcohol-involved crashes; 6 (100.0%) of those drivers were coded as had-been-drinking by the officer on the crash form.

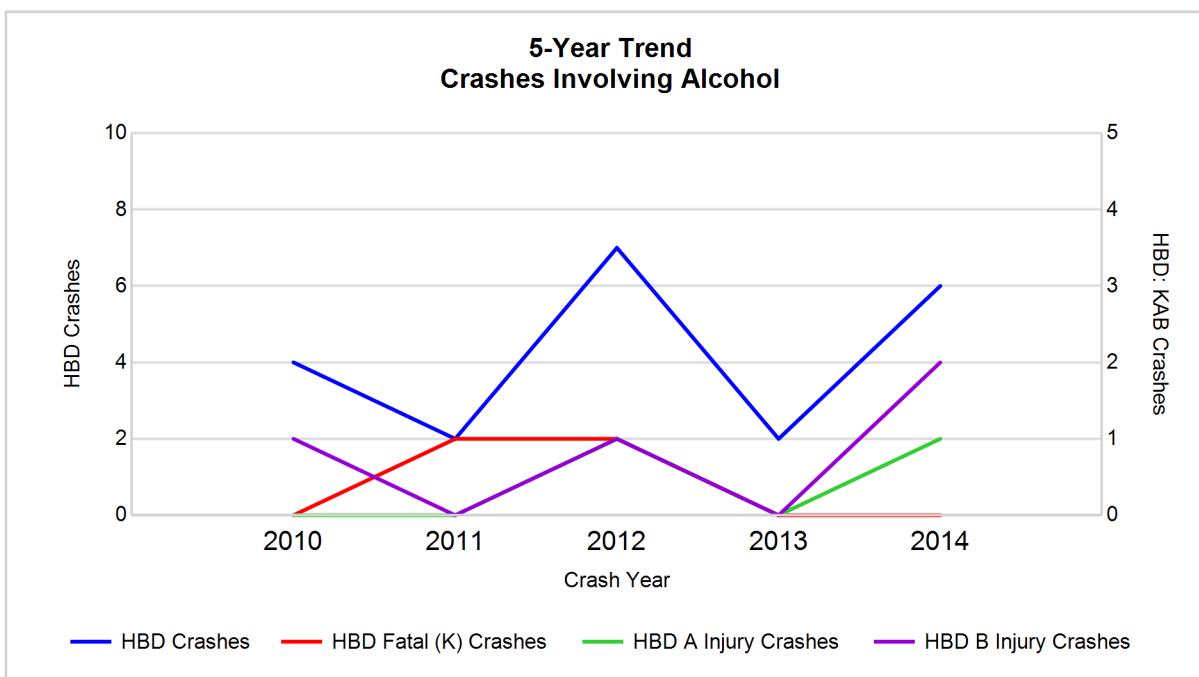
- 3 (50.0%) of the 6 drivers had a blood alcohol concentration (BAC) of 0.08 g/dL (grams per deciliter) or greater, and 1 (33.3%) of the 3 drivers had a BAC at or above 0.17 g/dL.
- 5 (83.3%) of the 6 drivers were coded as had-been-drinking and were tested for alcohol consumption.

**5-Year Trend - Crashes Involving Alcohol**

Year	All Crashes	HBD Crashes	% HBD	Fatal Crashes	HBD Fatal Crashes	% HBD	A Injury Crashes	HBD A Injury Crashes	% HBD	B Injury Crashes	HBD B Injury Crashes	% HBD
2010	64	4	6.3	1	0	0.0	1	0	0.0	4	1	25.0
2011	81	2	2.5	2	1	50.0	5	0	0.0	4	0	0.0
2012	101	7	6.9	1	1	100.0	7	1	14.3	10	1	10.0
2013	88	2	2.3	0	0	0.0	3	0	0.0	5	0	0.0
2014	77	6	7.8**	0	0	0.0	5	1	20.0**	7	2**	28.6**

Note: \* Indicates that the most recent year is the lowest number or percentage reported in the 5-year period in that column

\*\* Indicates that the most recent year is the highest number or percentage reported in the 5-year period in that column



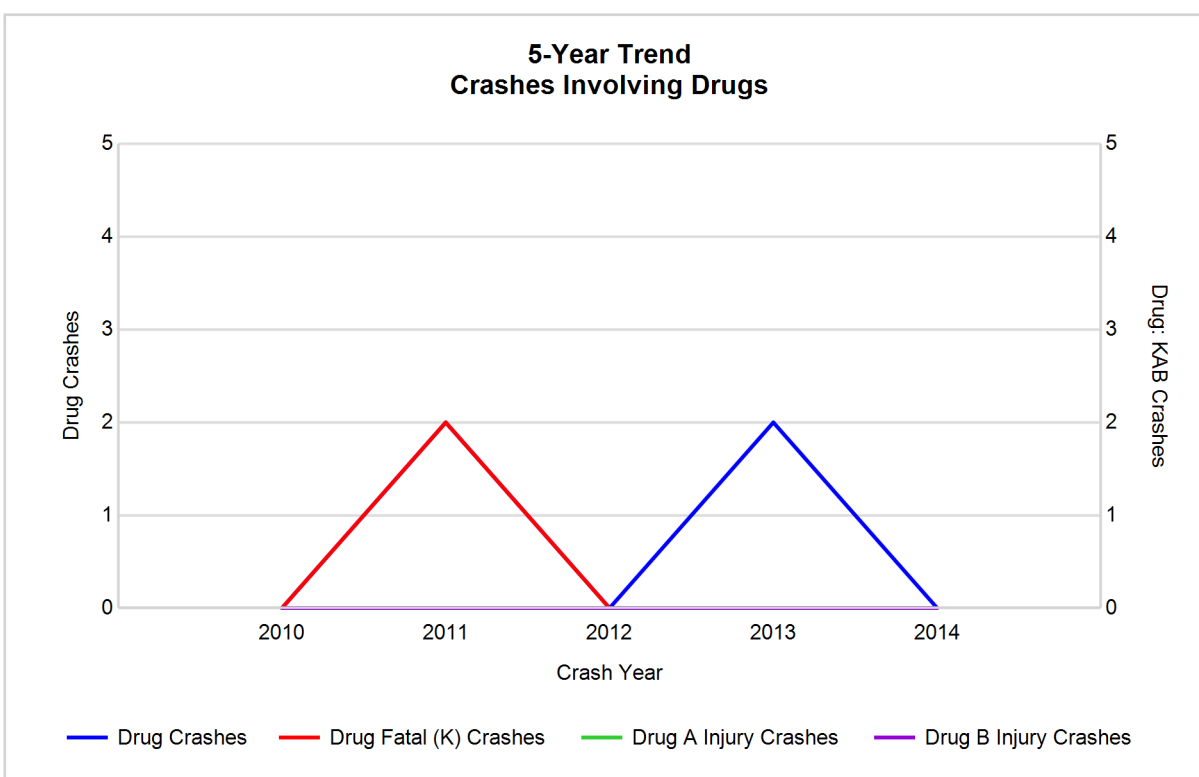
Note: Had-Been-Drinking (HBD)

## 5-Year Trend - Crashes Involving Drugs

Year	All Crashes	Drug Crashes	% Drug	Fatal Crashes	Drug Fatal Crashes	% Drug	A Injury Crashes	Drug A Injury Crashes	% Drug	B Injury Crashes	Drug B Injury Crashes	% Drug
2010	64	0	0.0	1	0	0.0	1	0	0.0	4	0	0.0
2011	81	2	2.5	2	2	100.0	5	0	0.0	4	0	0.0
2012	101	0	0.0	1	0	0.0	7	0	0.0	10	0	0.0
2013	88	2	2.3	0	0	0.0	3	0	0.0	5	0	0.0
2014	77	0	0.0	0	0	0.0	5	0	0.0	7	0	0.0

Note: \* Indicates that the most recent year is the lowest number or percentage reported in the 5-year period in that column

\*\* Indicates that the most recent year is the highest number or percentage reported in the 5-year period in that column

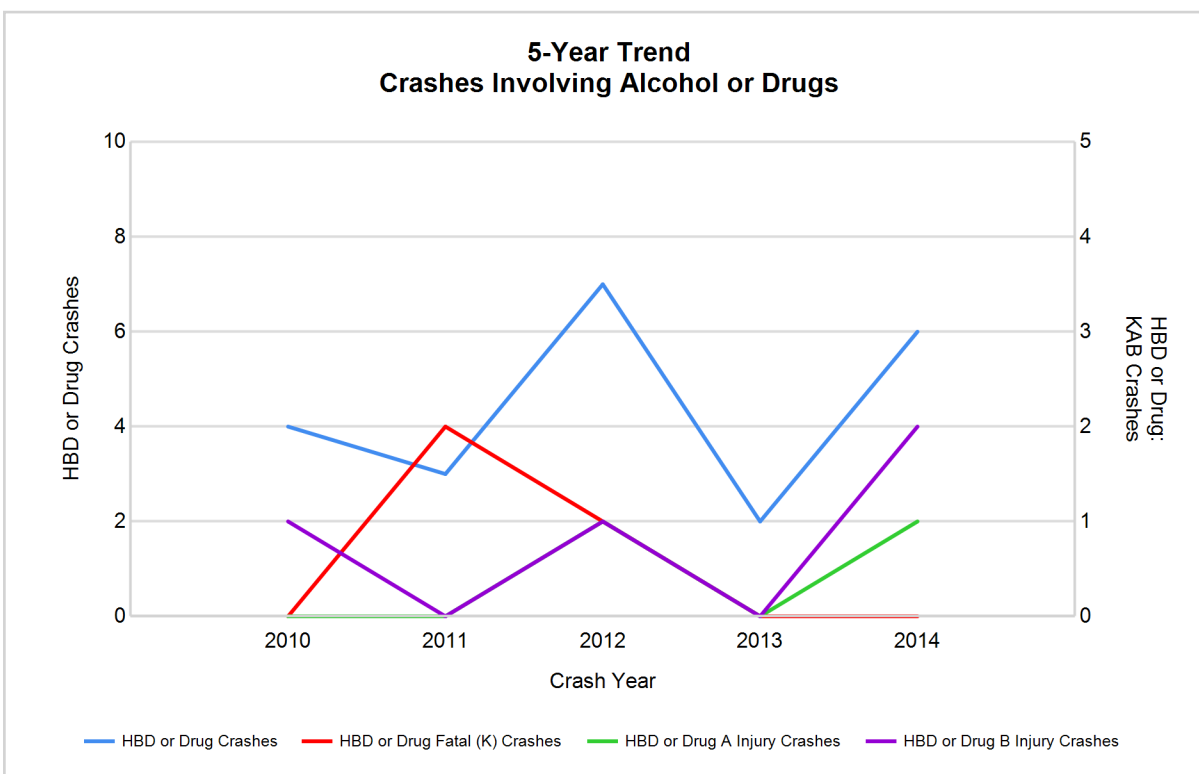


## 5-Year Trend - Crashes Involving Alcohol or Drugs

Year	All Crashes	HBD or Drug Crashes	% HBD or Drug	Fatal Crashes	HBD or Drug Fatal Crashes	% HBD or Drug	A Injury Crashes	HBD or Drug A Injury Crashes	% HBD or Drug	B Injury Crashes	HBD or Drug B Injury Crashes	% HBD or Drug
2010	64	4	6.3	1	0	0.0	1	0	0.0	4	1	25.0
2011	81	3	3.7	2	2	100.0	5	0	0.0	4	0	0.0
2012	101	7	6.9	1	1	100.0	7	1	14.3	10	1	10.0
2013	88	2	2.3	0	0	0.0	3	0	0.0	5	0	0.0
2014	77	6	7.8**	0	0	0.0	5	1	20.0**	7	2**	28.6**

Note: \* Indicates that the most recent year is the lowest number or percentage reported in the 5-year period in that column

\*\* Indicates that the most recent year is the highest number or percentage reported in the 5-year period in that column



Note: Had-Been-Drinking (HBD)

## 2014 - Restraints Worn Among Vehicle Drivers and Injured Passengers by Vehicle Type

Vehicle Type	Total Occupants			Fatalities			A - Incapacitating			B - Non-incapacitating			C - Possible Injury			No Injury		
	Total	Used Restraint	%	Total	Used Restraint	%	Total	Used Restraint	%	Total	Used Restraint	%	Total	Used Restraint	%	Total	Used Restraint	%
Passenger car & station wagon	60	55	91.7	0	0	0.0	0	0	0.0	6	5	83.3	2	2	100.0	47	46	97.9
Van & motorhome	4	4	100.0	0	0	0.0	0	0	0.0	0	0	0.0	1	1	100.0	3	3	100.0
Pickup truck	17	17	100.0	0	0	0.0	0	0	0.0	0	0	0.0	0	0	0.0	17	17	100.0
Small truck under 10,000 lbs. GVWR	8	5	62.5	0	0	0.0	2	1	50.0	1	1	100.0	3	1	33.3	2	2	100.0
Cycle	10	8	80.0	0	0	0.0	6	4	66.7	1	1	100.0	1	1	100.0	2	2	100.0
Moped	0	0	0.0	0	0	0.0	0	0	0.0	0	0	0.0	0	0	0.0	0	0	0.0
Go Cart	0	0	0.0	0	0	0.0	0	0	0.0	0	0	0.0	0	0	0.0	0	0	0.0
Snowmobile	1	1	100.0	0	0	0.0	0	0	0.0	0	0	0.0	0	0	0.0	1	1	100.0
Off-Road Vehicle (ORV) & All-Terrain Vehicle (ATV)	0	0	0.0	0	0	0.0	0	0	0.0	0	0	0.0	0	0	0.0	0	0	0.0
Other	0	0	0.0	0	0	0.0	0	0	0.0	0	0	0.0	0	0	0.0	0	0	0.0
Truck/bus over 10,000 lbs.	2	2	100.0	0	0	0.0	0	0	0.0	0	0	0.0	0	0	0.0	2	2	100.0
Unknown	1	0	0.0	0	0	0.0	0	0	0.0	0	0	0.0	0	0	0.0	0	0	0.0
<b>Total</b>	<b>103</b>	<b>92</b>	<b>89.3</b>	<b>0</b>	<b>0</b>	<b>0.0</b>	<b>8</b>	<b>5</b>	<b>62.5</b>	<b>8</b>	<b>7</b>	<b>87.5</b>	<b>7</b>	<b>5</b>	<b>71.4</b>	<b>74</b>	<b>73</b>	<b>98.6</b>

Note: Restraint Use includes shoulder belt only used, lap belt only used, both lap and shoulder belts used, child restraint used, restraint failure, and helmet worn.

## 2014 - Restraints Worn Among Vehicle Drivers and Injured Passengers by Age

Age Group	Total Occupants			Fatalities			A - Incapacitating			B - Non-incapacitating			C - Possible Injury			No Injury		
	Total	Used Restraint	%	Total	Used Restraint	%	Total	Used Restraint	%	Total	Used Restraint	%	Total	Used Restraint	%	Total	Used Restraint	%
0 - 15	0	0	0.0	0	0	0.0	0	0	0.0	0	0	0.0	0	0	0.0	0	0	0.0
16 - 20	14	10	71.4	0	0	0.0	1	0	0.0	2	1	50.0	4	2	50.0	5	5	100.0
21 - 24	15	15	100.0	0	0	0.0	2	2	100.0	2	2	100.0	0	0	0.0	11	11	100.0
25 - 64	43	40	93.0	0	0	0.0	5	3	60.0	2	2	100.0	1	1	100.0	35	34	97.1
65 +	27	27	100.0	0	0	0.0	0	0	0.0	2	2	100.0	2	2	100.0	23	23	100.0
Unknown	4	0	0.0	0	0	0.0	0	0	0.0	0	0	0.0	0	0	0.0	0	0	0.0
<b>Total</b>	<b>103</b>	<b>92</b>	<b>89.3</b>	<b>0</b>	<b>0</b>	<b>0.0</b>	<b>8</b>	<b>5</b>	<b>62.5</b>	<b>8</b>	<b>7</b>	<b>87.5</b>	<b>7</b>	<b>5</b>	<b>71.4</b>	<b>74</b>	<b>73</b>	<b>98.6</b>

Note: Restraint Use includes shoulder belt only used, lap belt only used, both lap and shoulder belts used, child restraint used, restraint failure, and helmet worn.

## 5-Year Trend - Restraint Use Among Drivers

Restraint Use	2010			2011			2012			2013			2014		
	Drivers	Fatal Drivers	Injured Drivers	Drivers	Fatal Drivers	Injured Drivers	Drivers	Fatal Drivers	Injured Drivers	Drivers	Fatal Drivers	Injured Drivers	Drivers	Fatal Drivers	Injured Drivers
No belts available	0	0	0	4	0	1	1	0	0	0	0	0	0	0	0
Shoulder belt only used	0	0	0	1	0	0	1	0	0	0	0	0	0	0	0
Lap belt only used	1	0	0	0	0	0	0	0	0	0	0	0	0	0	0
Both lap & shoulder belts used	57	0	4	72	1	6	95	0	12	97	0	7	81	0	9
No belts used	0	0	0	1	0	1	2	0	1	2	0	1	1	0	1
Child restraint used	0	0	0	0	0	0	0	0	0	0	0	0	0	0	0
Child restraint not used, unavailable or improper use	0	0	0	0	0	0	0	0	0	0	0	0	0	0	0
Restraint failure	0	0	0	0	0	0	0	0	0	0	0	0	0	0	0
Restraint use unknown	5	0	0	0	0	0	2	0	0	1	0	0	1	0	0
Helmet worn	5	0	3	8	0	7	6	0	6	4	0	4	8	0	5
Helmet not worn	0	0	0	0	0	0	3	1	2	0	0	0	2	0	2
Helmet use unknown	0	0	0	0	0	0	1	0	0	0	0	0	0	0	0
Uncoded & errors	4	0	0	5	0	1	3	0	0	5	0	0	4	0	0
<b>Total</b>	<b>72</b>	<b>0</b>	<b>7</b>	<b>91</b>	<b>1</b>	<b>16</b>	<b>114</b>	<b>1</b>	<b>21</b>	<b>109</b>	<b>0</b>	<b>12</b>	<b>97</b>	<b>0</b>	<b>17</b>

## 5-Year Trend - Restraint Use Among Drivers Coded Drinking

Restraint Use	2010			2011			2012			2013			2014		
	Drivers	Fatal Drivers	Injured Drivers	Drivers	Fatal Drivers	Injured Drivers	Drivers	Fatal Drivers	Injured Drivers	Drivers	Fatal Drivers	Injured Drivers	Drivers	Fatal Drivers	Injured Drivers
No belts available	0	0	0	0	0	0	0	0	0	0	0	0	0	0	0
Shoulder belt only used	0	0	0	0	0	0	0	0	0	0	0	0	0	0	0
Lap belt only used	0	0	0	0	0	0	0	0	0	0	0	0	0	0	0
Both lap & shoulder belts used	3	0	2	1	0	0	4	0	1	2	0	0	4	0	2
No belts used	0	0	0	0	0	0	1	0	1	0	0	0	0	0	0
Child restraint used	0	0	0	0	0	0	0	0	0	0	0	0	0	0	0
Child restraint not used, unavailable or improper use	0	0	0	0	0	0	0	0	0	0	0	0	0	0	0
Restraint failure	0	0	0	0	0	0	0	0	0	0	0	0	0	0	0
Restraint use unknown	1	0	0	0	0	0	1	0	0	0	0	0	1	0	0
Helmet worn	0	0	0	0	0	0	0	0	0	0	0	0	1	0	1
Helmet not worn	0	0	0	0	0	0	1	1	0	0	0	0	0	0	0
Helmet use unknown	0	0	0	0	0	0	0	0	0	0	0	0	0	0	0
Uncoded & errors	0	0	0	1	0	1	0	0	0	0	0	0	0	0	0
<b>Total</b>	<b>4</b>	<b>0</b>	<b>2</b>	<b>2</b>	<b>0</b>	<b>1</b>	<b>7</b>	<b>1</b>	<b>2</b>	<b>2</b>	<b>0</b>	<b>0</b>	<b>6</b>	<b>0</b>	<b>3</b>

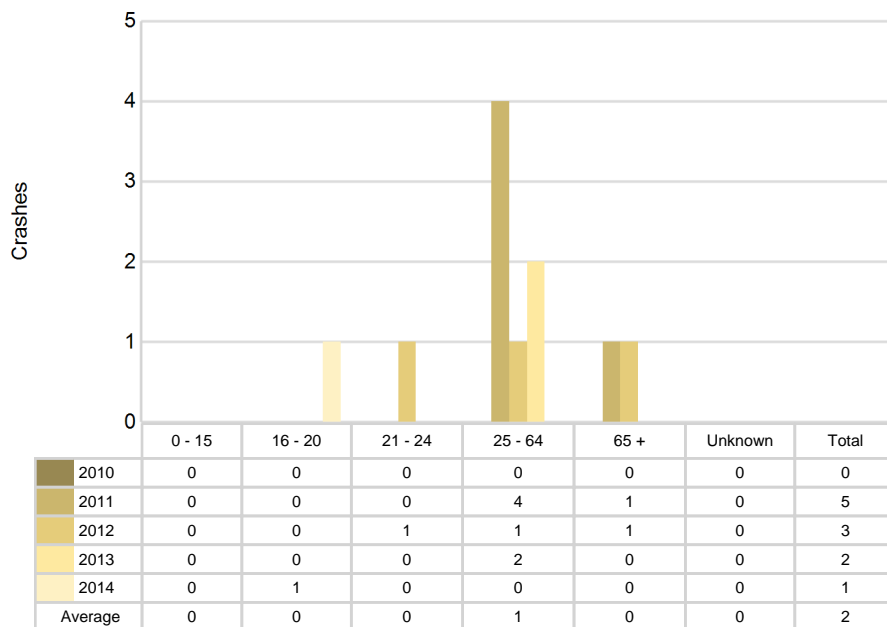


## 5-Year Trend - Seatbelt Not Used Among Drivers by Age

Age Group	2010			2011			2012			2013			2014		
	Drivers	Fatal Drivers	Injured Drivers	Drivers	Fatal Drivers	Injured Drivers	Drivers	Fatal Drivers	Injured Drivers	Drivers	Fatal Drivers	Injured Drivers	Drivers	Fatal Drivers	Injured Drivers
0 - 15	0	0	0	0	0	0	0	0	0	0	0	0	0	0	0
16 - 20	0	0	0	0	0	0	0	0	0	0	0	0	1	0	1
21 - 24	0	0	0	0	0	0	1	0	1	0	0	0	0	0	0
25 - 64	0	0	0	4	0	1	1	0	0	2	0	1	0	0	0
65 +	0	0	0	1	0	1	1	0	0	0	0	0	0	0	0
Unknown	0	0	0	0	0	0	0	0	0	0	0	0	0	0	0
<b>Total</b>	<b>0</b>	<b>0</b>	<b>0</b>	<b>5</b>	<b>0</b>	<b>2</b>	<b>3</b>	<b>0</b>	<b>1</b>	<b>2</b>	<b>0</b>	<b>1</b>	<b>1</b>	<b>0</b>	<b>1</b>

Note: Seatbelt Not Used includes no belts available or no belts used.

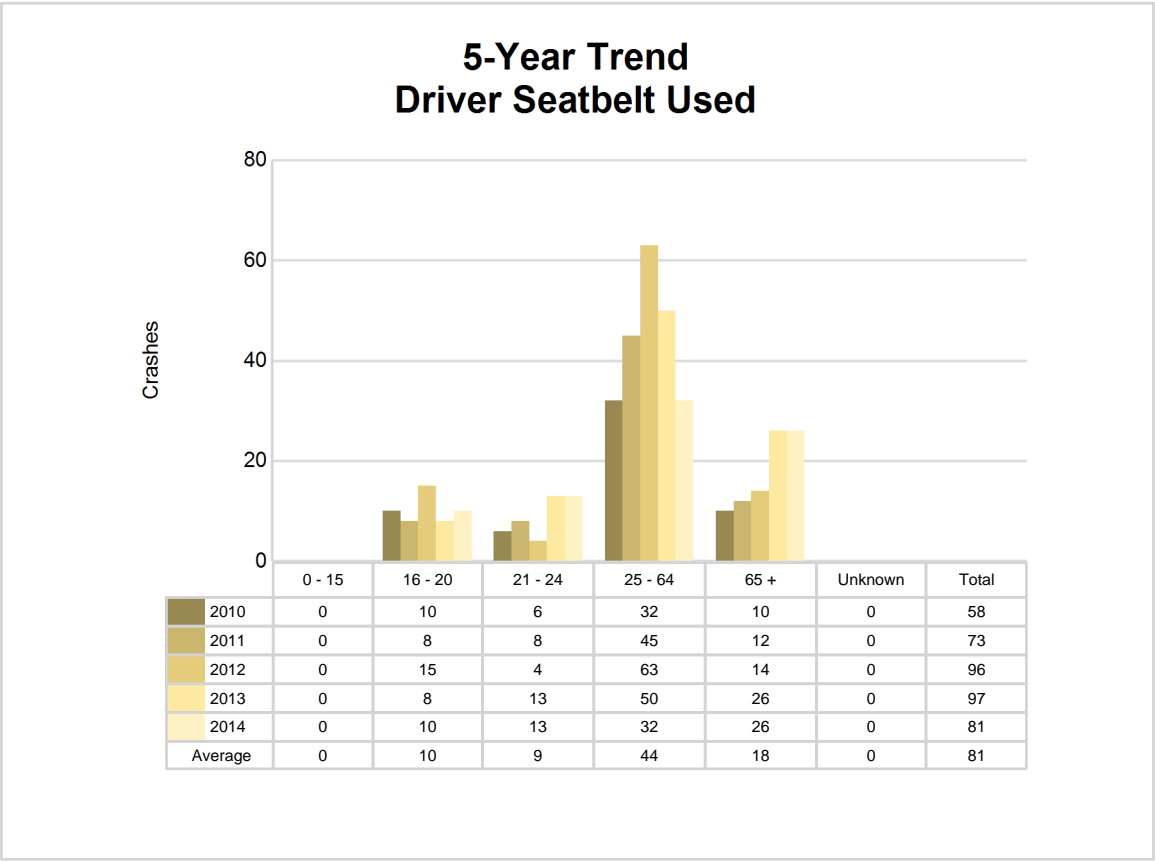
## 5-Year Trend Driver Seatbelt Not Used

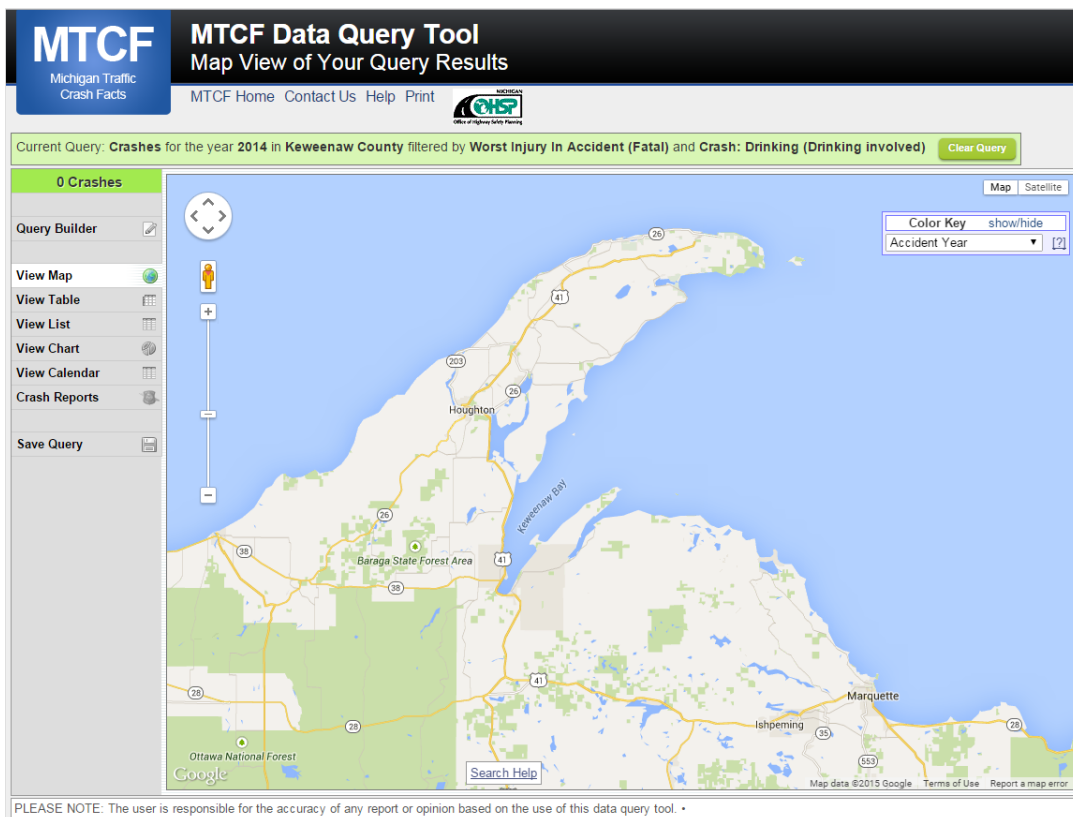


5-Year Trend - Seatbelt Used Among Drivers by Age

Age Group	2010			2011			2012			2013			2014		
	Drivers	Fatal Drivers	Injured Drivers	Drivers	Fatal Drivers	Injured Drivers	Drivers	Fatal Drivers	Injured Drivers	Drivers	Fatal Drivers	Injured Drivers	Drivers	Fatal Drivers	Injured Drivers
0 - 15	0	0	0	0	0	0	0	0	0	0	0	0	0	0	0
16 - 20	10	0	2	8	0	3	15	0	4	8	0	1	10	0	3
21 - 24	6	0	0	8	0	1	4	0	1	13	0	1	13	0	2
25 - 64	32	0	2	45	1	1	63	0	7	50	0	3	32	0	1
65 +	10	0	0	12	0	1	14	0	0	26	0	2	26	0	3
Unknown	0	0	0	0	0	0	0	0	0	0	0	0	0	0	0
Total	58	0	4	73	1	6	96	0	12	97	0	7	81	0	9

Note: Seatbelt Used includes shoulder belt only used, lap belt only used, both lap and shoulder belts used, and restraint failure.





The picture above represents all 2014 alcohol-involved fatal crashes in Keweenaw County.

In 2014, there were 6 alcohol-involved crashes in Keweenaw County:

- 0 K - Fatal Crashes
- 1 A - Incapacitating Injury Crashes
- 2 B - Non-incapacitating Injury Crashes
- 0 C - Possible Injury Crashes
- 3 O - Property Damage Only/No Injury Crashes

### Office of Highway Safety Planning

333 South Grand Avenue  
P.O. Box 30634  
Lansing, Michigan 48909  
Phone: (517) 241-2500  
Fax: (517) 241-2501

Find us on the web:  
[MichiganTrafficCrashFacts.org](http://MichiganTrafficCrashFacts.org)

