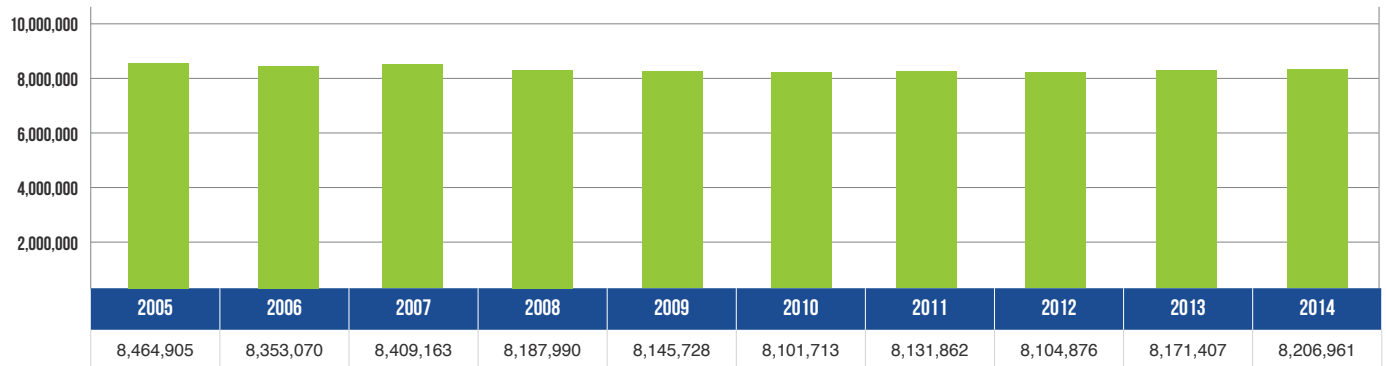


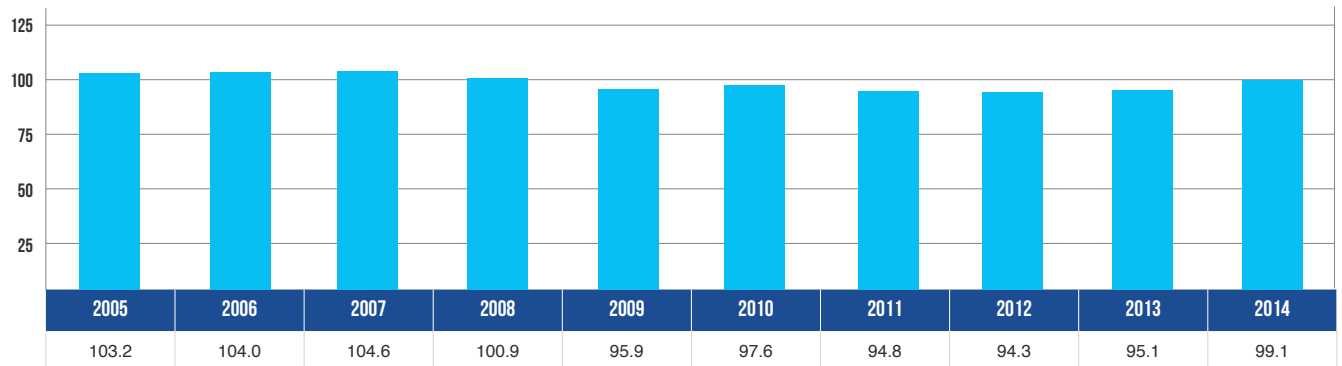
10 YEAR TRENDS-STATEWIDE

VEHICLE REGISTRATIONS



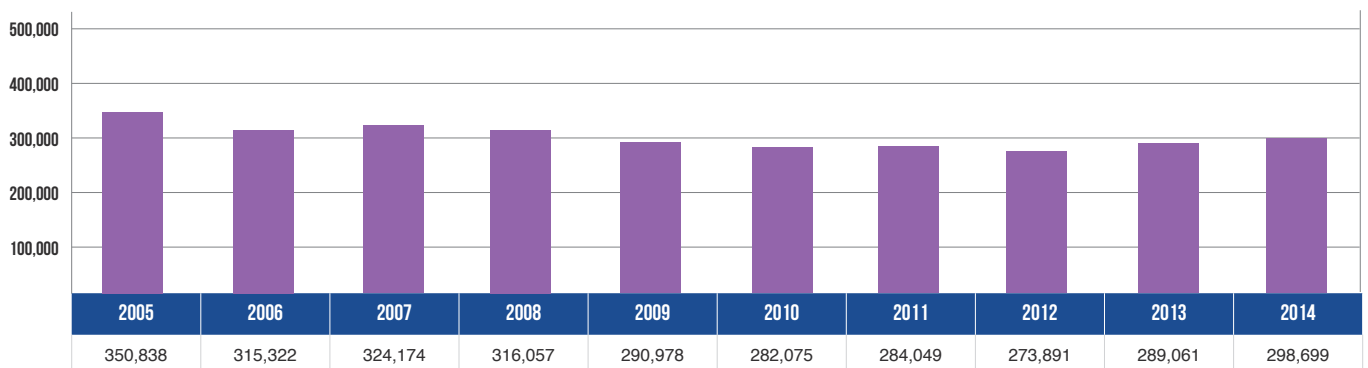
Vehicle registrations decreased 3.0 percent over the 10-year period.

VEHICLE MILES TRAVELED



Vehicle miles traveled decreased 4.0 percent over the 10-year period.

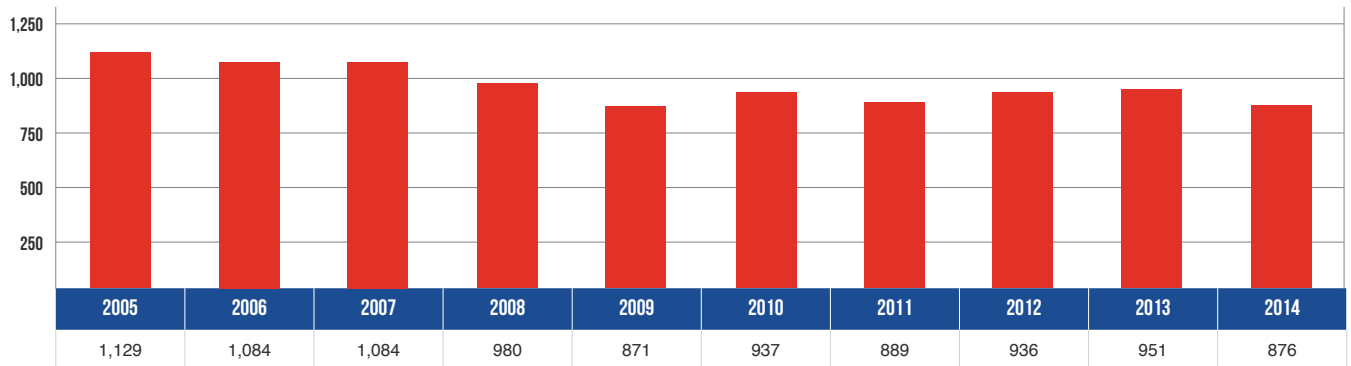
CRASHES



There were 298,699 total crashes statewide in 2014 – a 14.9 percent decrease from 2005.

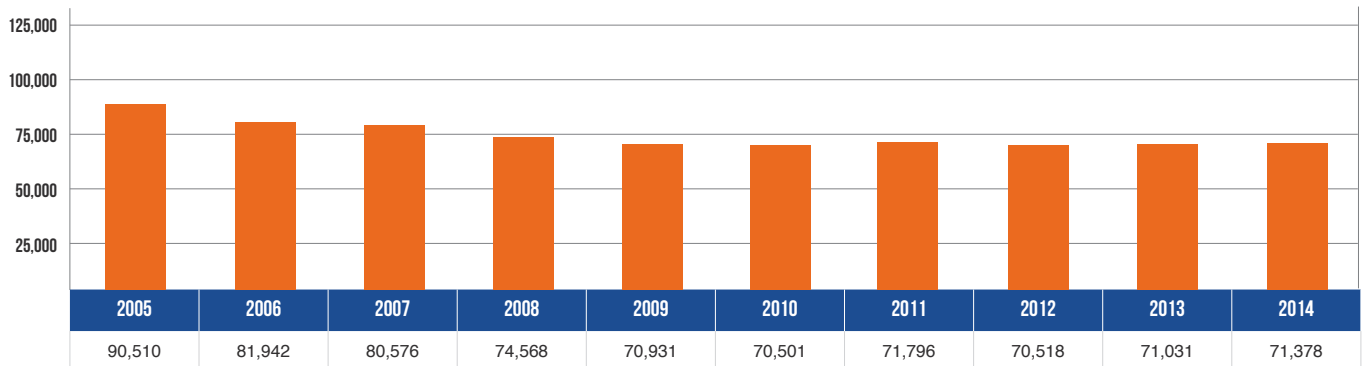
10 YEAR TRENDS-STATEWIDE (CONTINUED)

DEATHS



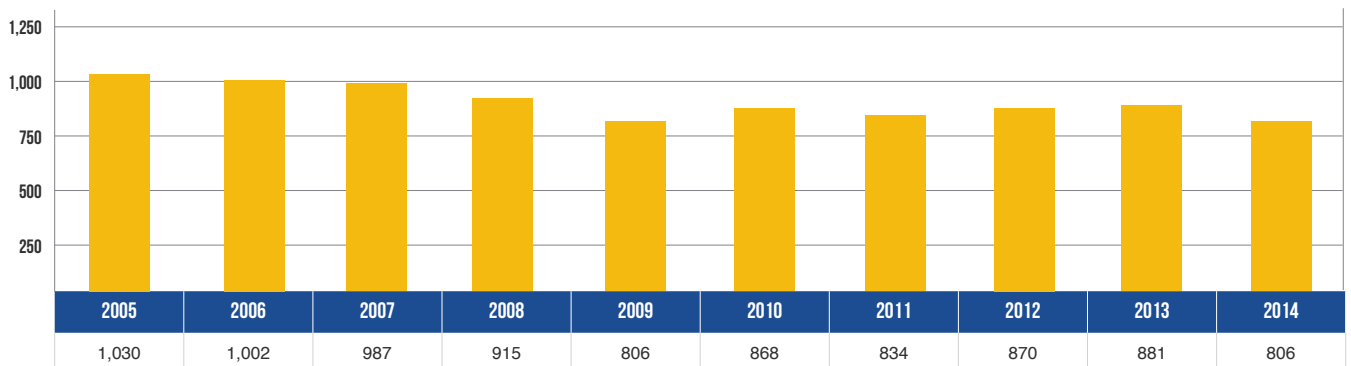
In 2014, 876 people died in motor vehicle crashes – a decrease of 22.4 percent from 2005.

INJURIES



In 2014, 71,378 people received injuries in motor vehicle crashes – down 21.1 percent from 90,510 in 2005.

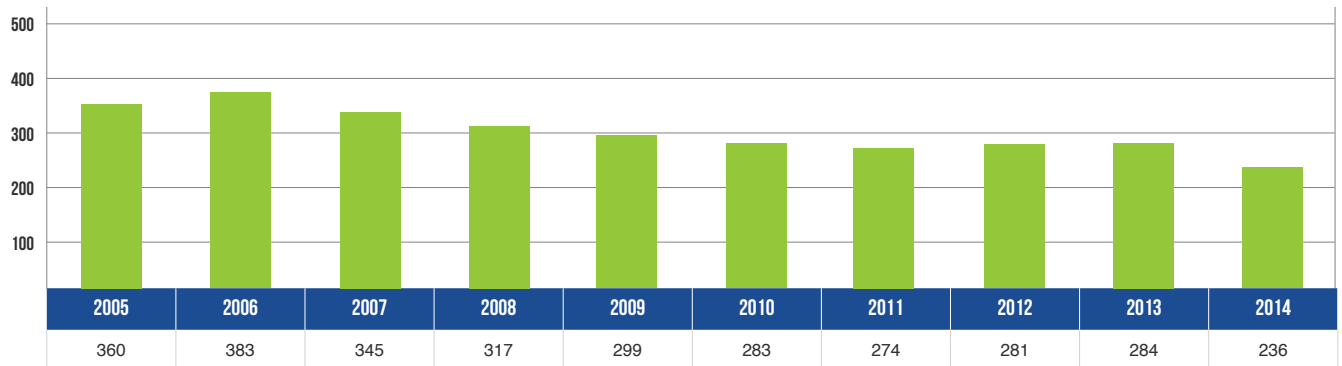
FATAL CRASHES



In 2014, there were 806 fatal crashes – down 21.7 percent from 1,030 in 2005

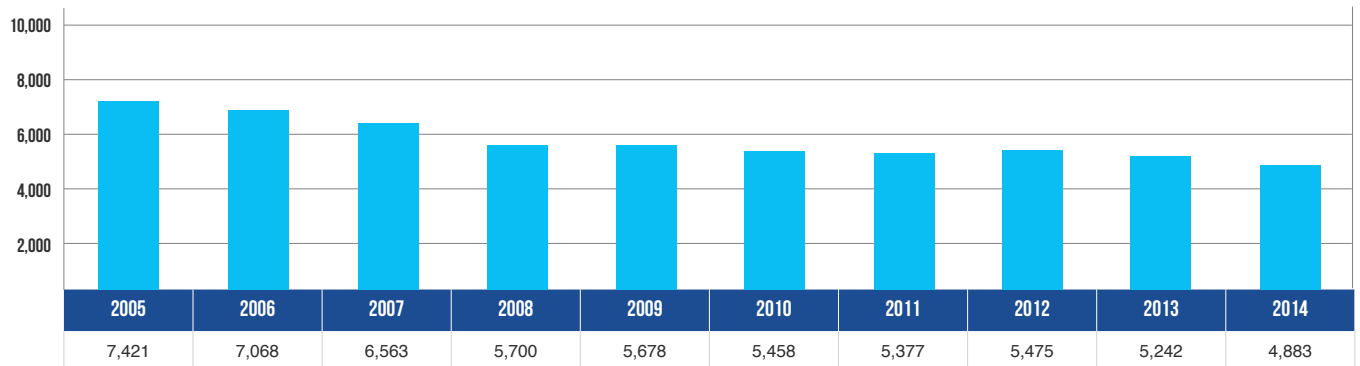
10 YEAR TRENDS-STATEWIDE (CONTINUED)

ALCOHOL-INVOLVED DEATHS



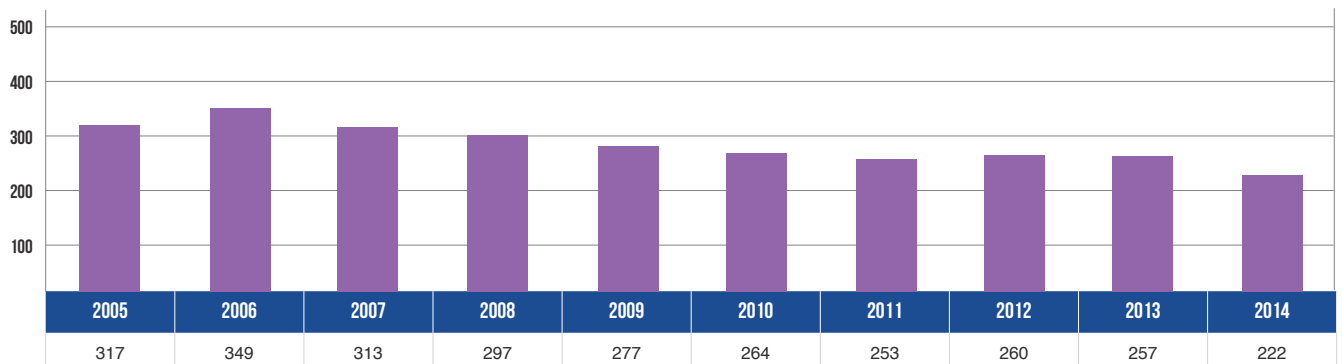
There were 236 deaths in alcohol-involved crashes in 2014 – down 34.4 percent from 2005.

ALCOHOL-INVOLVED INJURIES



There were 4,883 injuries in alcohol-involved crashes in 2014 – down 34.2 percent from 2005..

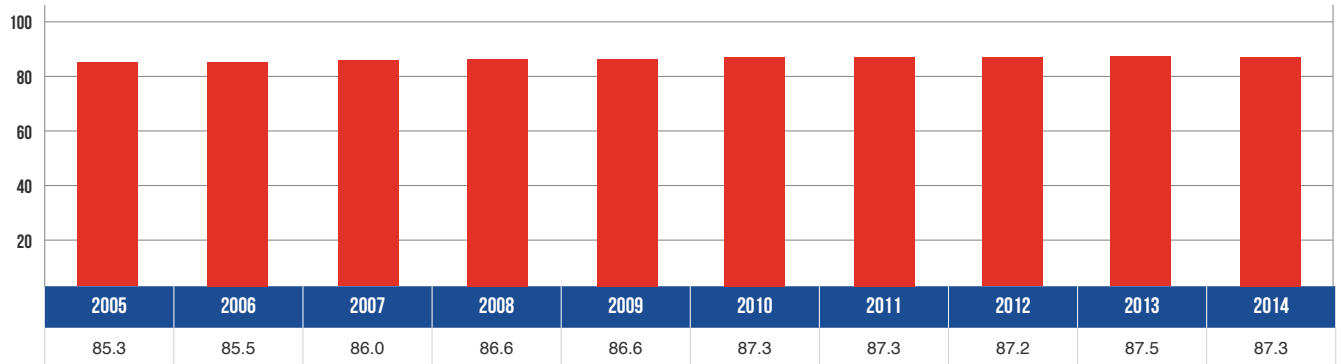
ALCOHOL-INVOLVED FATAL CRASHES



There were 222 injuries in alcohol-involved fatal crashes in 2014 – down 30.0 percent from 2005.

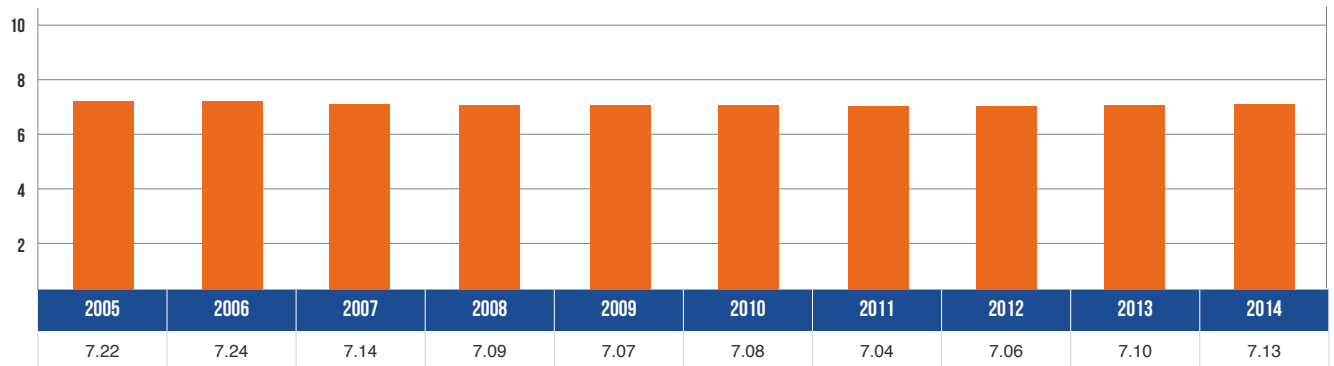
10 YEAR TRENDS-STATEWIDE (CONTINUED)

RESTRAINT USAGE IN CRASHES



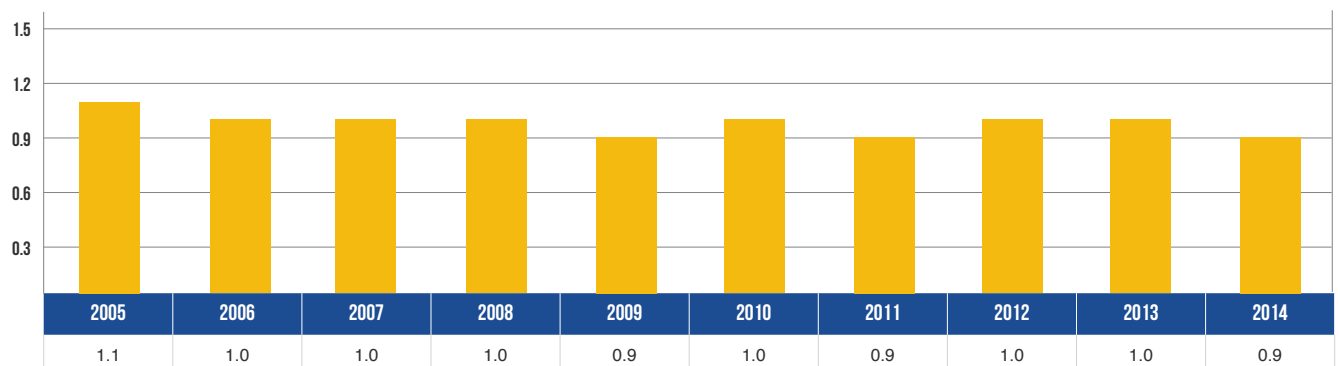
The percentage of motor vehicle occupants using restraints as reported by police in traffic crashes increased 2.4 percent over the last ten years.

DRIVERS IN MICHIGAN



There were 7,130,205 licensed drivers on Michigan roadways in 2014 – a decrease of 1.2 percent from 2005.

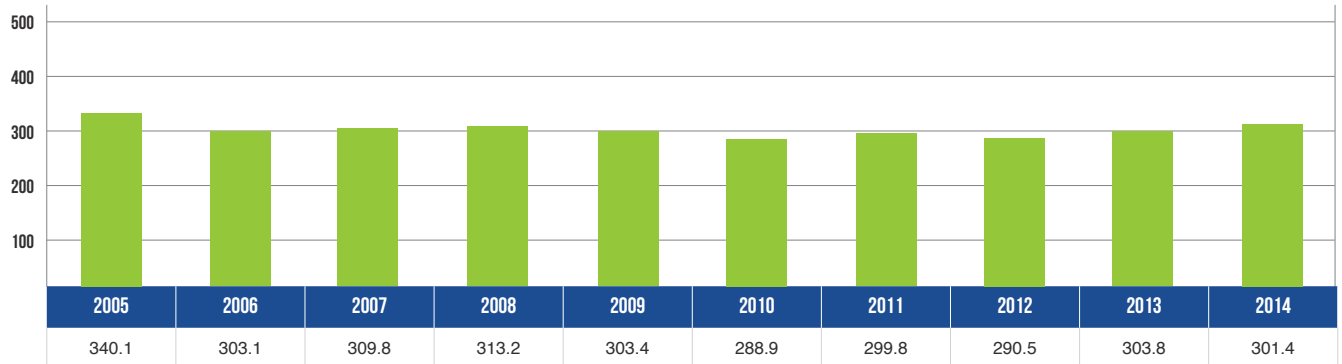
MILEAGE DEATH RATE



The 0.9 death rate in 2014 was a 18.2 percent decrease from the 10-year high of 1.1 in 2005.

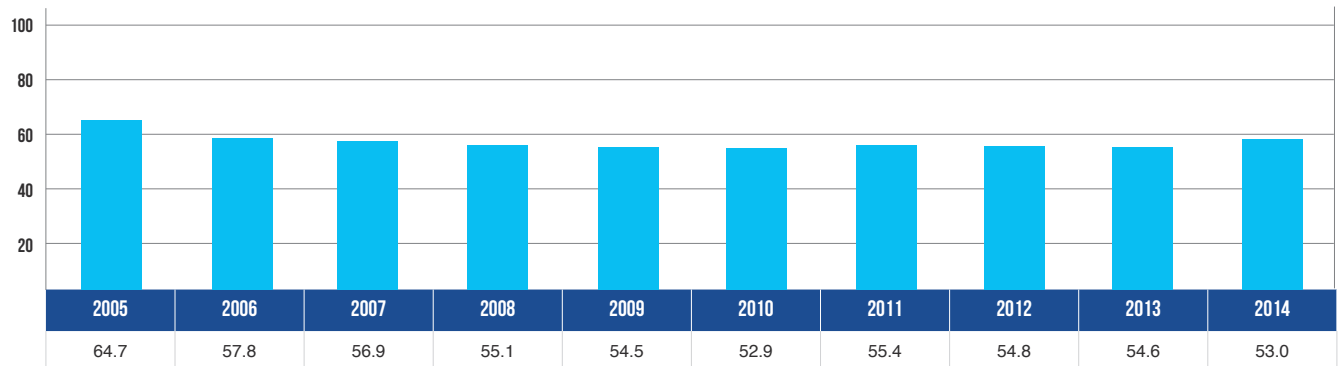
10 YEAR TRENDS-STATEWIDE (CONTINUED)

TOTAL CRASH RATE



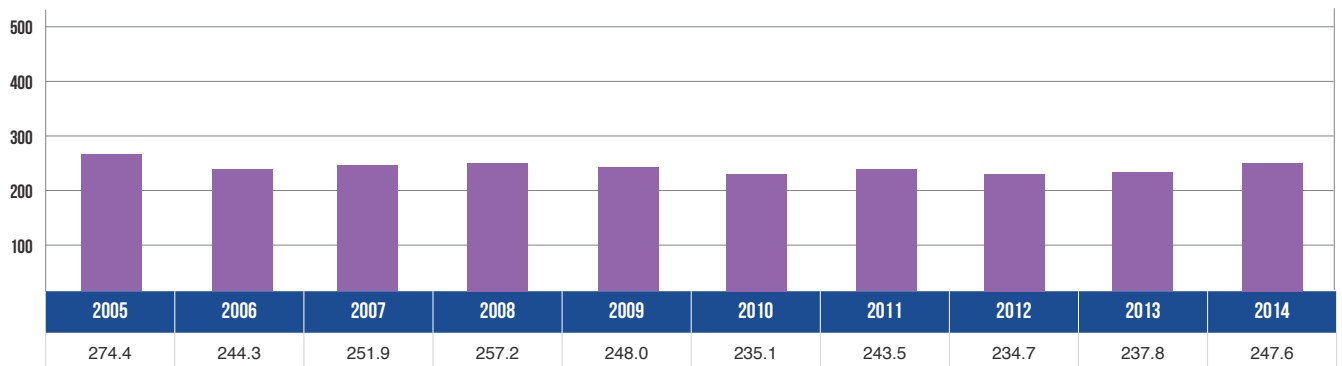
The 10-year total crash rate peaked in 2005 at 340.1, then decreased by 11.4 percent to 301.4 in 2014.

INJURY CRASH RATE



The 10-year injury crash rate of 53.0 in 2014 was a 18.1 percent decrease from 2005.

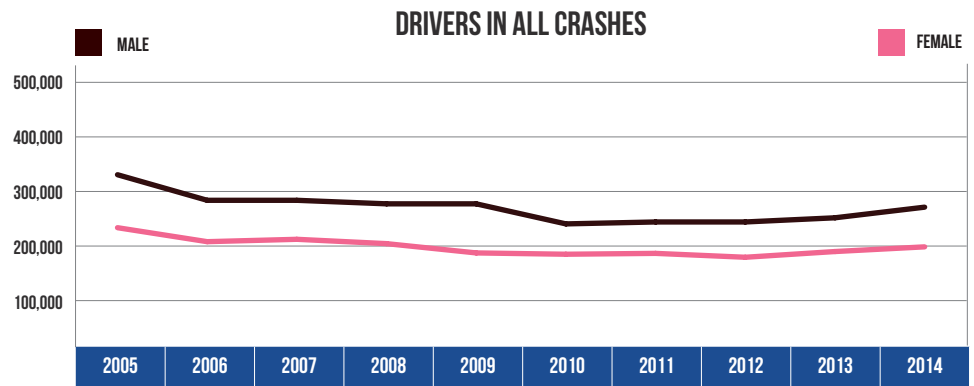
PROPERTY DAMAGE CRASH RATE



The property damage crash rate of 247.6 in 2014 was a 9.8 percent decrease from 2005.

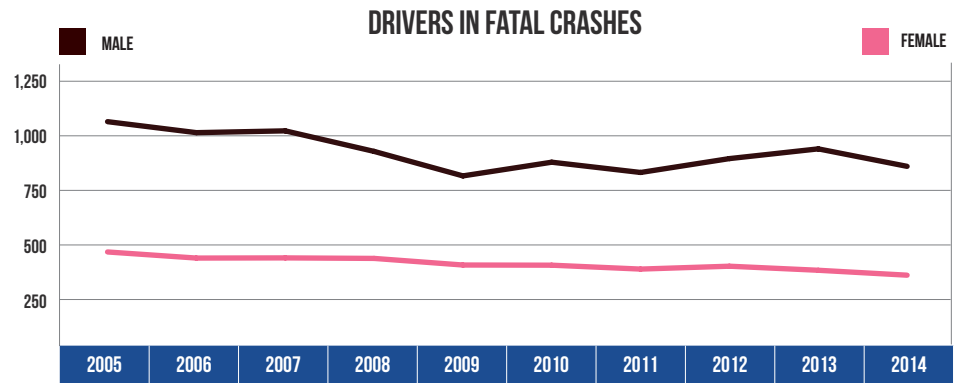
10 YEAR TRENDS-STATEWIDE (CONTINUED)

DRIVERS IN ALL CRASHES		
Year	Male	Female
2005	309,487	237,343
2006	272,328	216,196
2007	277,353	219,781
2008	267,186	213,223
2009	242,490	199,166
2010	238,048	197,183
2011	240,850	198,488
2012	232,475	192,605
2013	246,908	201,264
2014	262,359	208,359



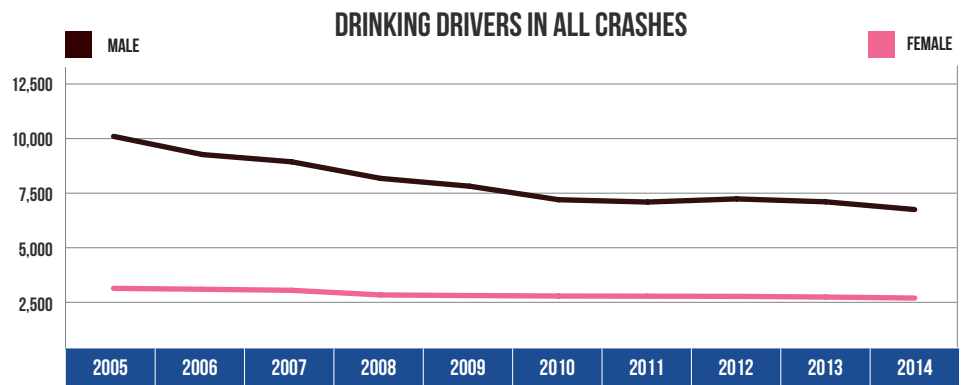
Male drivers accounted for 55.7 percent of all drivers in crashes during 2014, which was down from 56.6 percent in 2005. Female drivers accounted for 44.3 percent of all drivers in crashes during 2014, which was up from 43.4 percent in 2005.

DRIVERS IN FATAL CRASHES		
Year	Male	Female
2005	1,141	452
2006	1,080	416
2007	1,090	417
2008	976	414
2009	840	375
2010	916	374
2011	859	351
2012	936	368
2013	990	344
2014	893	315



Male drivers made up 73.9 percent of all drivers in fatal crashes in 2014, which was up from 71.6 percent in 2005. Female drivers made up 26.1 percent of all drivers in fatal crashes in 2014, which was down from 28.4 percent in 2005.

DRINKING DRIVERS IN ALL CRASHES		
Year	Male	Female
2005	10,359	3,045
2006	9,454	2,991
2007	9,095	2,928
2008	8,270	2,650
2009	7,881	2,613
2010	7,209	2,584
2011	7,094	2,574
2012	7,250	2,563
2013	7,105	2,522
2014	6,721	2,461

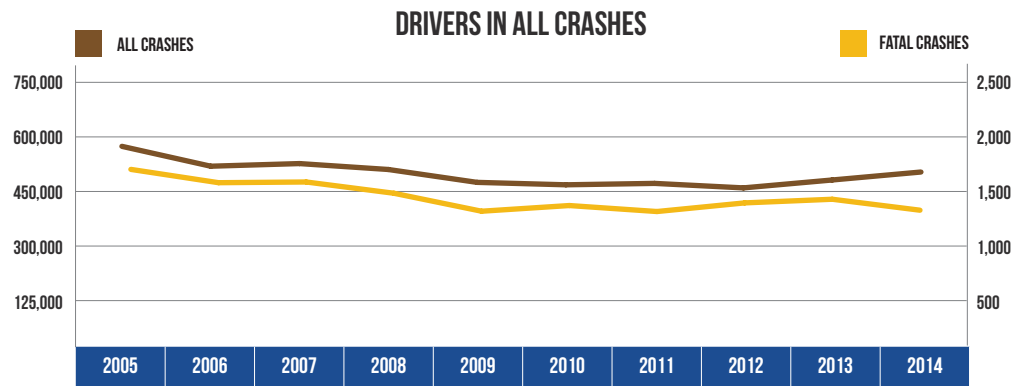


In 2014, males represented 73.2 percent of all drinking drivers, which was down from 77.3 percent in 2005. Females represented 26.8 percent of all drinking drivers in 2014, which was up from 22.7 percent in 2005.

Note: 39,368 drivers in all crashes, 72 drivers in fatal crashes, and 36 drinking drivers were coded as unknown gender in 2014 and are not included in the tables.

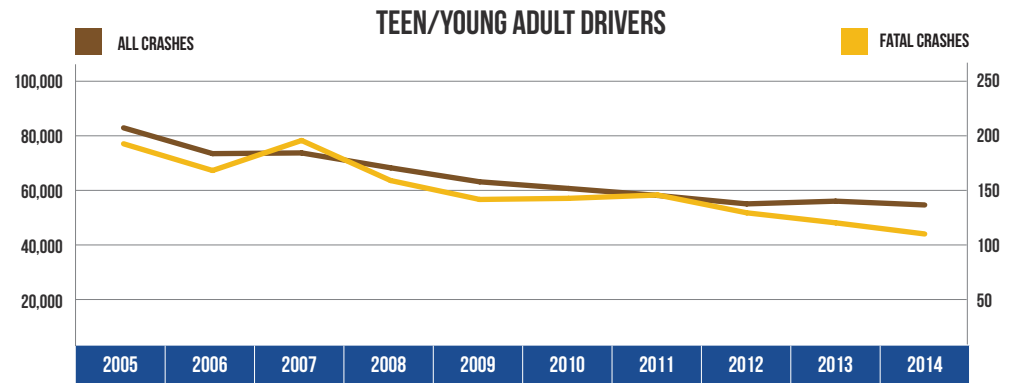
10 YEAR TRENDS-STATEWIDE (CONTINUED)

ALL CRASHES		
Year	All Crashes	Fatal Crashes
2005	592,671	1,682
2006	528,763	1,551
2007	537,228	1,558
2008	518,240	1,447
2009	476,801	1,270
2010	468,968	1,326
2011	473,501	1,267
2012	459,030	1,352
2013	484,446	1,388
2014	510,086	1,280



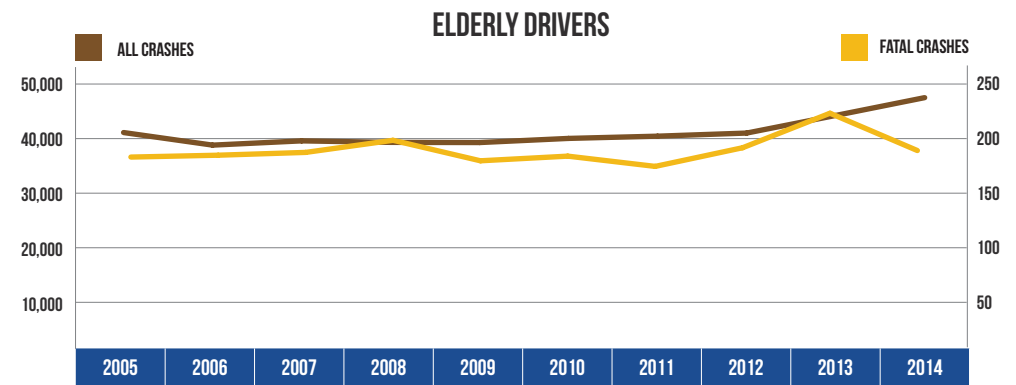
The number of drivers involved in all crashes decreased 13.9 percent over the 10-year period. The number of drivers involved in fatal crashes decreased 23.9 percent over the 10-year period.

TEEN/YOUNG ADULT DRIVERS (AGE 16-20)		
Year	All Crashes	Fatal Crashes
2005	82,017	196
2006	72,957	172
2007	73,210	199
2008	67,982	163
2009	63,069	146
2010	60,721	147
2011	58,279	150
2012	55,307	134
2013	56,264	125
2014	54,935	115



Teen/young adult drivers (age 16-20) represented 6.7 percent of the licensed drivers in 2014. The number of teen/young adult drivers in all crashes has decreased by 33.0 percent since 2005. Their involvement in fatal crashes has decreased 41.3 percent during the same time period.

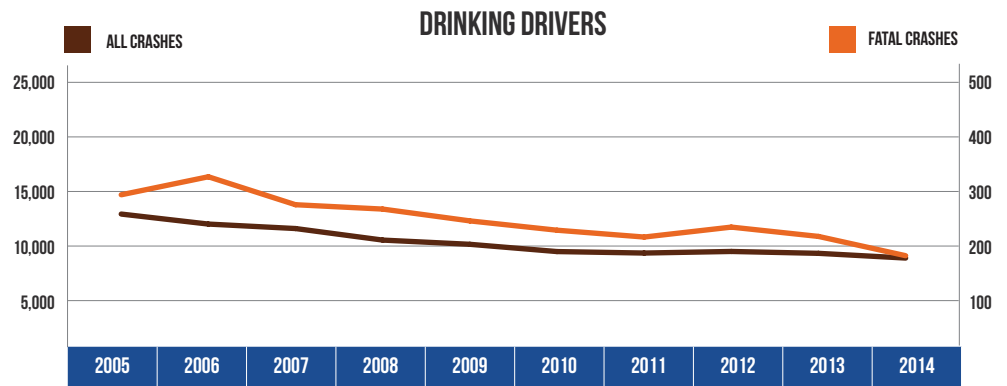
ELDERLY DRIVERS (AGE 65 & OVER)		
Year	All Crashes	Fatal Crashes
2005	41,140	186
2006	38,899	188
2007	39,656	191
2008	39,388	204
2009	39,357	182
2010	40,096	187
2011	40,495	176
2012	41,047	196
2013	44,183	233
2014	47,356	193



Elderly drivers (age 65 and over) represented 19.1 percent in 2014. The number of drivers age 65 and over in all crashes has increased 15.1 percent since 2005. Elderly driver involvement in fatal crashes increased 3.8 percent during the same time period.

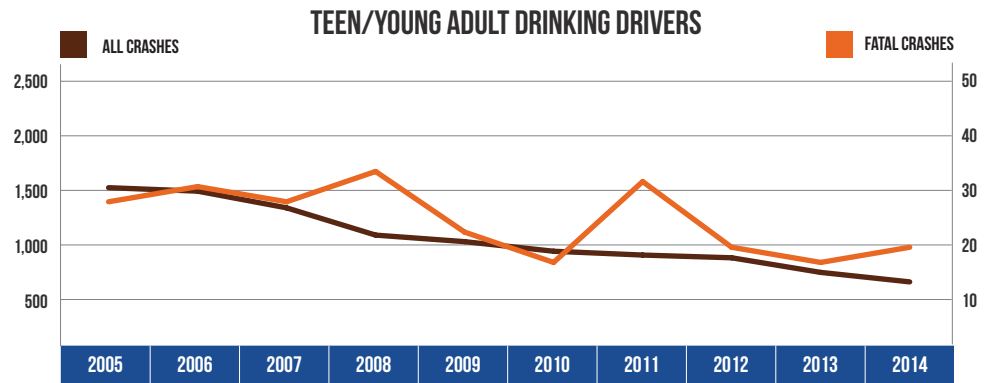
10 YEAR TRENDS-STATEWIDE (CONTINUED)

DRINKING DRIVERS		
Year	All Crashes	Fatal Crashes
2005	13,452	294
2006	12,489	323
2007	12,059	278
2008	10,948	271
2009	10,542	252
2010	9,843	237
2011	9,701	226
2012	9,853	242
2013	9,673	227
2014	9,218	196



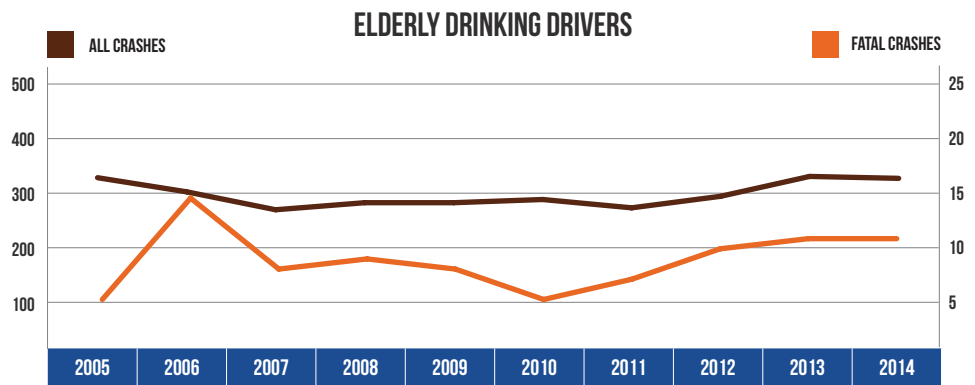
Drinking driver involvement in all crashes decreased by 31.5 percent from 2005. Drinking driver involvement in fatal crashes decreased by 33.3 percent from 2005.

TEEN/YOUNG ADULT DRINKING DRIVERS (AGE 16-20)		
Year	All Crashes	Fatal Crashes
2005	1,553	28
2006	1,521	31
2007	1,368	28
2008	1,118	34
2009	1,058	22
2010	970	16
2011	935	32
2012	910	19
2013	776	16
2014	689	19



The number of teen/young adult drinking drivers (age 16-20) in all crashes decreased by 55.6 percent, and their involvement in fatal crashes decreased by 32.1 percent from 2005.

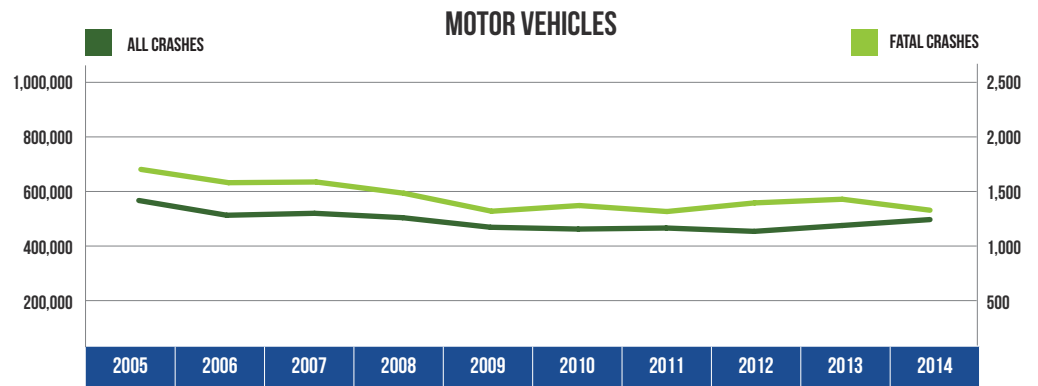
ELDERLY DRINKING DRIVERS (AGE 65 & OVER)		
Year	All Crashes	Fatal Crashes
2005	316	5
2006	294	15
2007	266	8
2008	277	9
2009	277	8
2010	282	5
2011	269	7
2012	287	10
2013	318	11
2014	315	11



The number of elderly drinking drivers (age 65 and over) in all crashes decreased by 0.3 percent from 2005. Their involvement in fatal crashes increased by 120.0 percent from 2005.

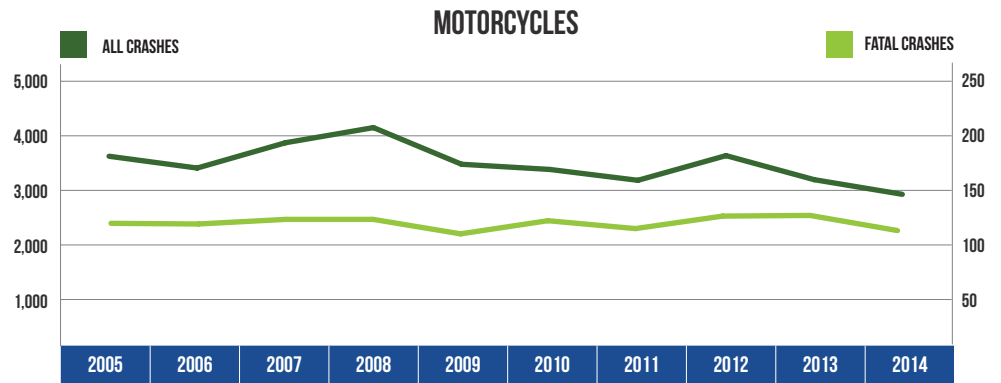
10 YEAR TRENDS-STATEWIDE (CONTINUED)

MOTOR VEHICLES		
Year	All Crashes	Fatal Crashes
2005	592,671	1,682
2006	528,763	1,551
2007	537,228	1,558
2008	518,240	1,447
2009	476,801	1,270
2010	468,968	1,326
2011	473,501	1,267
2012	459,030	1,352
2013	484,446	1,388
2014	510,086	1,280



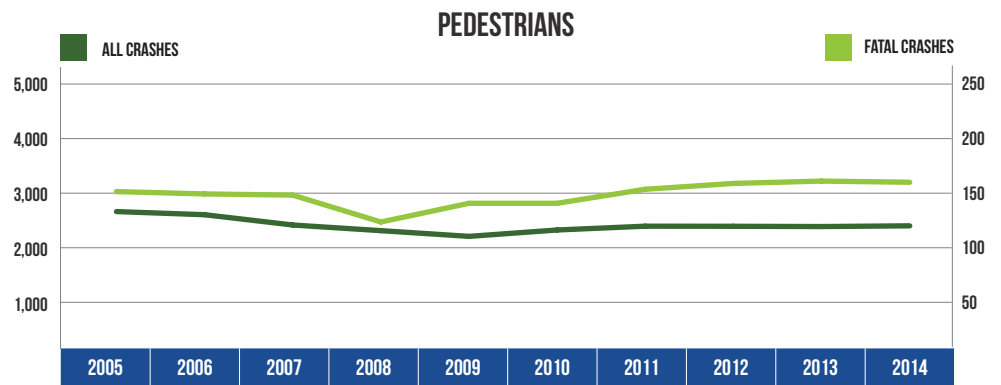
There were 510,086 motor vehicles involved in all crashes in 2014, down 13.9 percent from 2005. There were 1,280 motor vehicles involved in fatal crashes in 2014, down 23.9 percent from 2005.

MOTORCYCLES		
Year	All Crashes	Fatal Crashes
2005	3,589	121
2006	3,386	120
2007	3,821	127
2008	4,082	127
2009	3,451	105
2010	3,362	125
2011	3,175	113
2012	3,600	132
2013	3,186	133
2014	2,934	110



There were 2,934 motorcycles involved in crashes in 2014, a 18.3 percent decrease from 2005. There were 110 motorcycles involved in fatal crashes in 2014, down 9.1 percent from 2005.

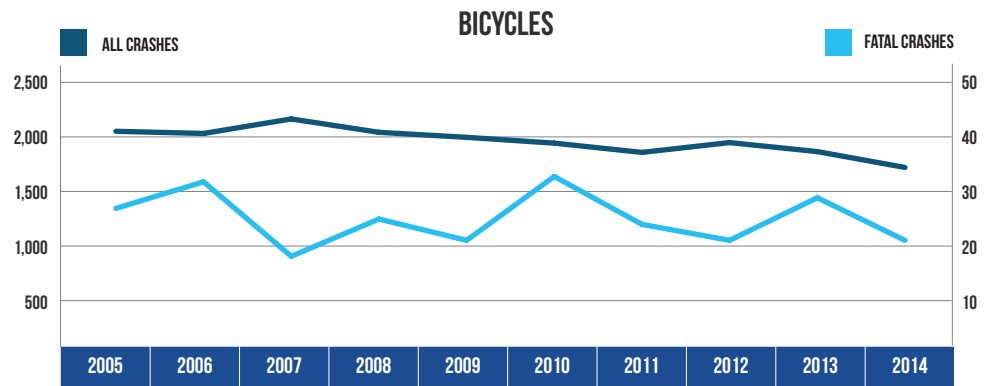
PEDESTRIANS		
Year	All Crashes	Fatal Crashes
2005	2,683	150
2006	2,622	148
2007	2,422	147
2008	2,312	124
2009	2,201	140
2010	2,325	140
2011	2,399	152
2012	2,397	157
2013	2,392	159
2014	2,406	158



There were 2,406 pedestrians involved in crashes in 2014, down 10.3 percent from 2005. There were 158 pedestrians involved in fatal crashes in 2014, up 5.3 percent from 2005.

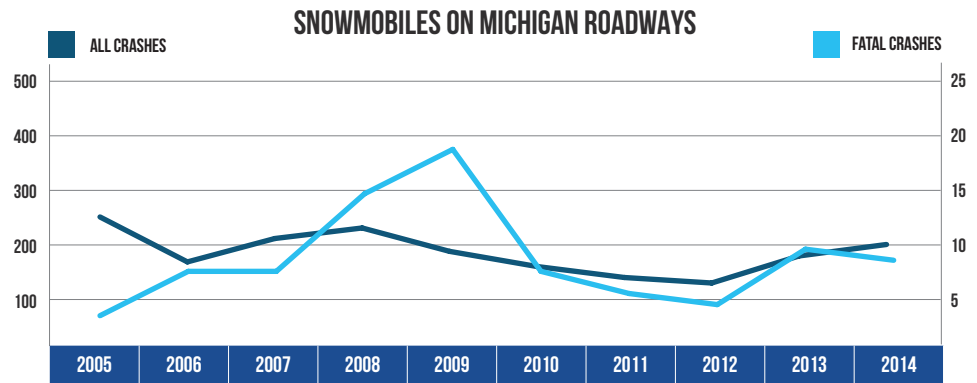
10 YEAR TRENDS-STATEWIDE (CONTINUED)

BICYCLES		
Year	All Crashes	Fatal Crashes
2005	2,080	27
2006	2,061	32
2007	2,188	18
2008	2,071	25
2009	2,027	21
2010	1,976	33
2011	1,895	24
2012	1,981	21
2013	1,902	29
2014	1,763	21



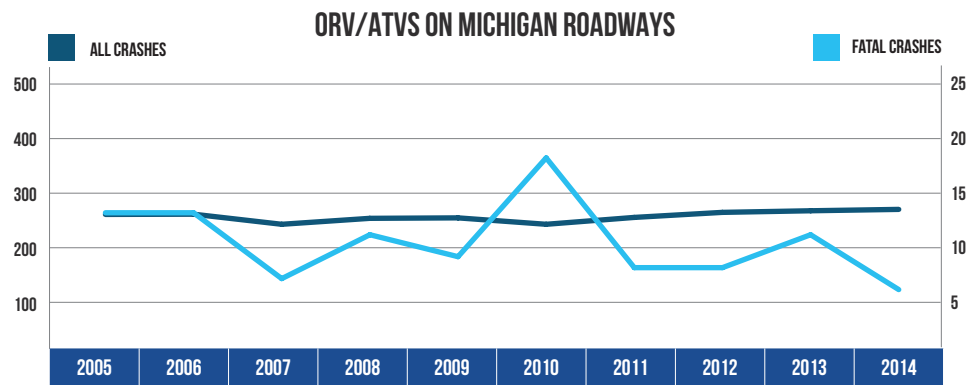
There were 1,763 bicycles involved in crashes in 2014, down 15.2 percent from 2005. There were 21 bicycles involved in fatal crashes in 2014, down 22.2 percent from 2005.

SNOWMOBILES ON MICHIGAN ROADWAYS		
Year	All Crashes	Fatal Crashes
2005	264	4
2006	166	8
2007	217	8
2008	240	15
2009	189	19
2010	156	8
2011	132	6
2012	120	5
2013	179	10
2014	204	9



There were 204 snowmobiles in crashes on roadways in 2014, down 22.7 percent from 2005. There were 9 snowmobiles in fatal crashes, up 125.0 percent from 2005.

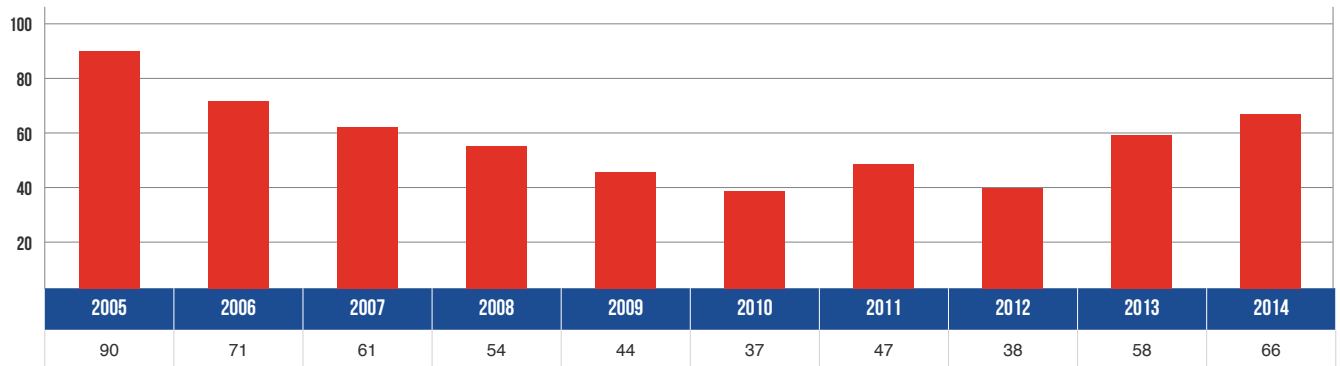
ORV/ATVS ON MICHIGAN ROADWAYS		
Year	All Crashes	Fatal Crashes
2005	266	13
2006	267	13
2007	223	7
2008	249	11
2009	251	9
2010	223	18
2011	253	8
2012	275	8
2013	282	11
2014	288	6



There were 288 ORV/ATVs in crashes on roadways in 2014, up 8.3 percent from 2005. There were 6 ORV/ATVs in fatal crashes, down 53.8 percent from 2005.

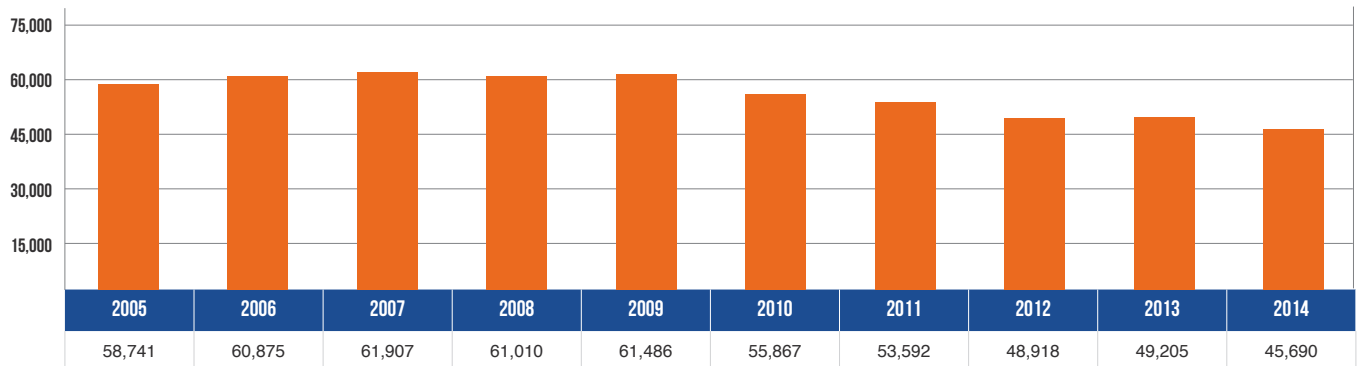
10 YEAR TRENDS-STATEWIDE (CONTINUED)

VEHICLE-TRAIN CRASHES



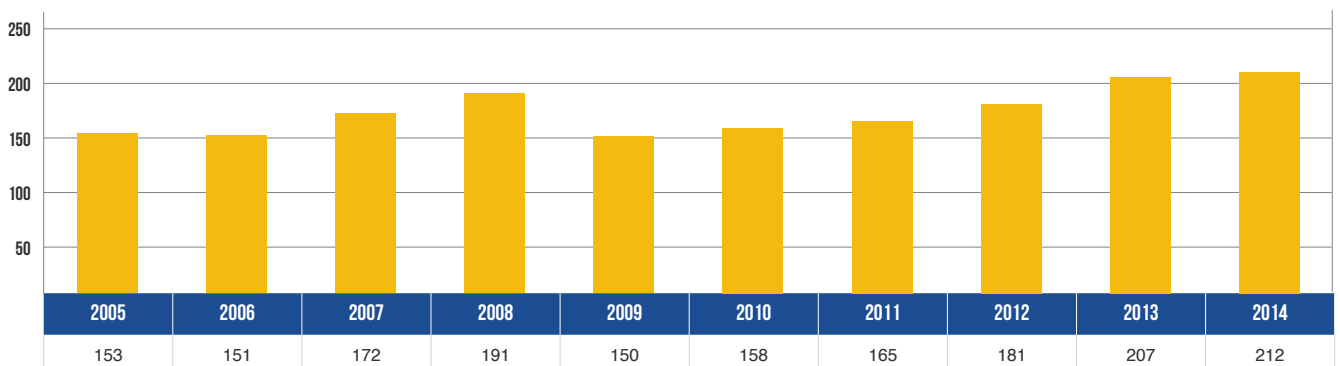
There were 66 vehicle-train crashes in 2014 – a decrease of 26.7 percent in the 10-year period.

VEHICLE-DEER CRASHES



There were 45,690 vehicle-deer crashes in 2014 – a decrease of 22.2 percent in the 10-year period.

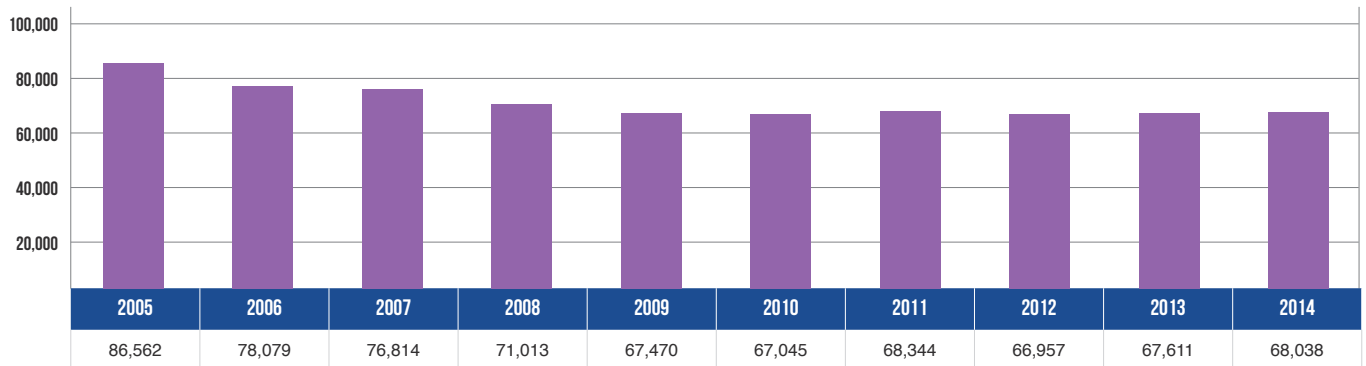
FARM EQUIPMENT CRASHES



There were 212 farm equipment crashes in 2014 – an increase of 38.6 percent from 2005.

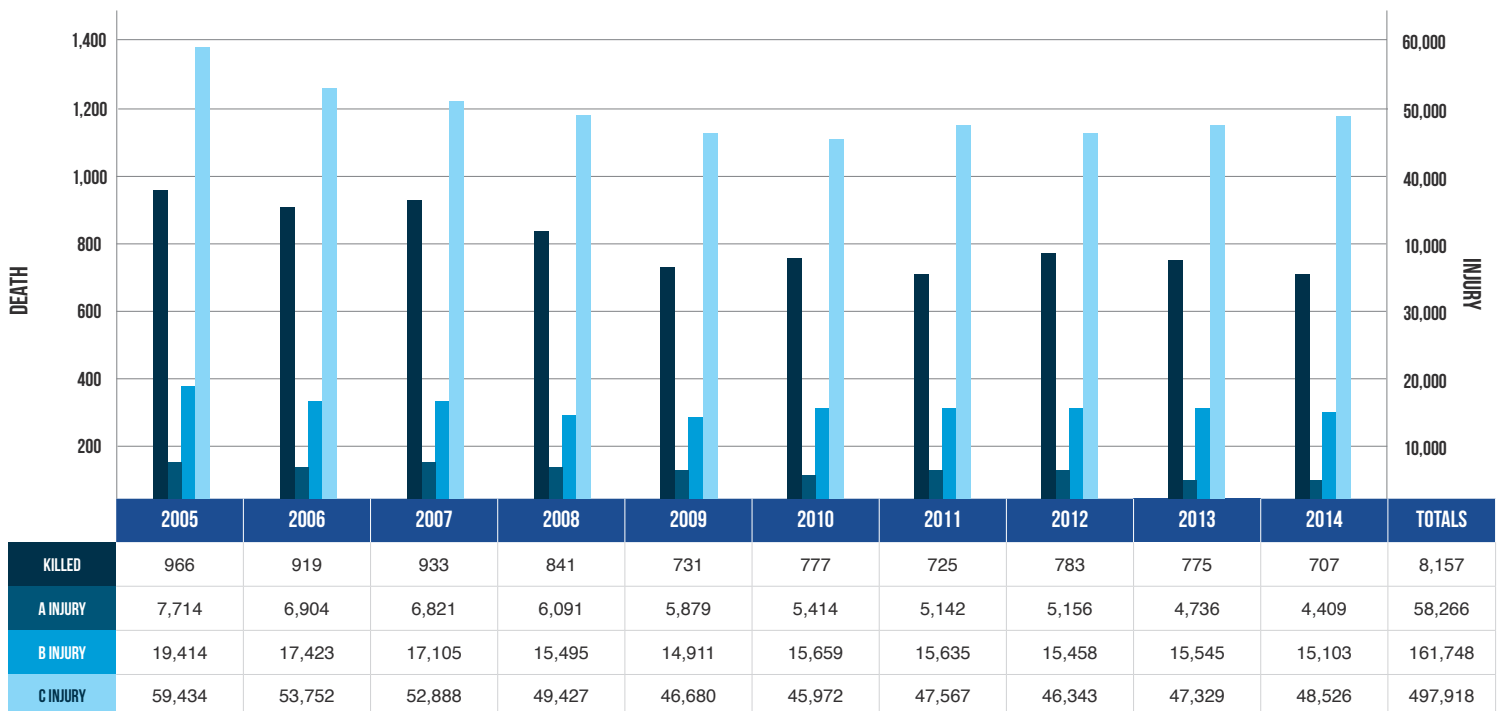
10 YEAR TRENDS-STATEWIDE(CONTINUED)

INJURED OCCUPANTS IN CRASHES



There were 68,038 occupants injured in crashes in 2014 – a decrease of 21.4 percent from 2005.

DEATH AND INJURY FOR CRASH-INVOLVED OCCUPANTS

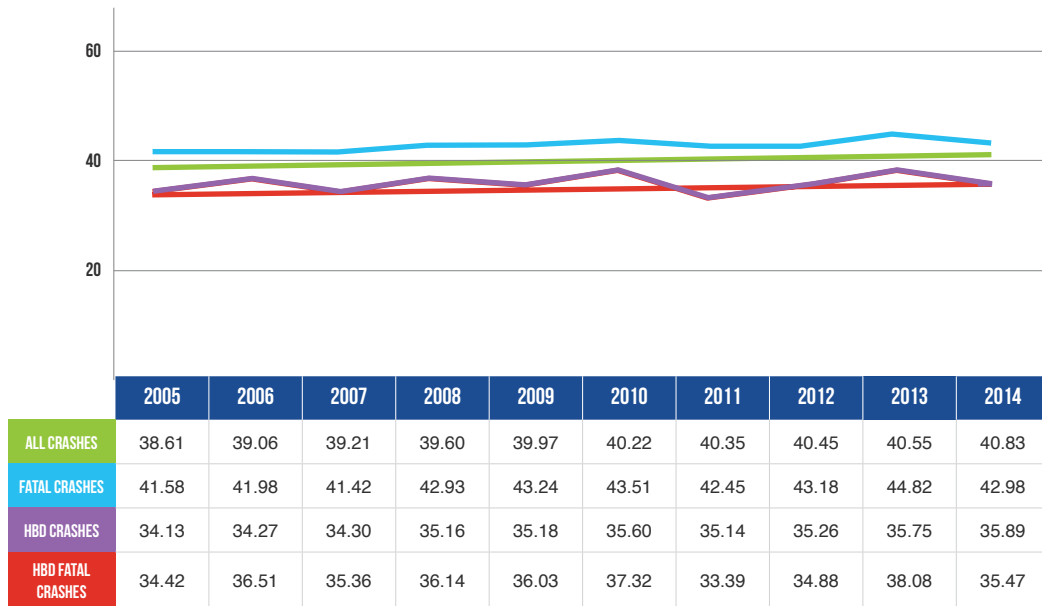


Over the period from 2005 to 2014, occupant deaths decreased 26.8 percent, A injuries decreased 42.8 percent, B injuries decreased 22.2 percent, and C injuries decreased 18.4 percent.

Note: These figures contain the number of occupants recorded as injured by the police officer on the UD-10.

10 YEAR TRENDS-STATEWIDE (CONTINUED)

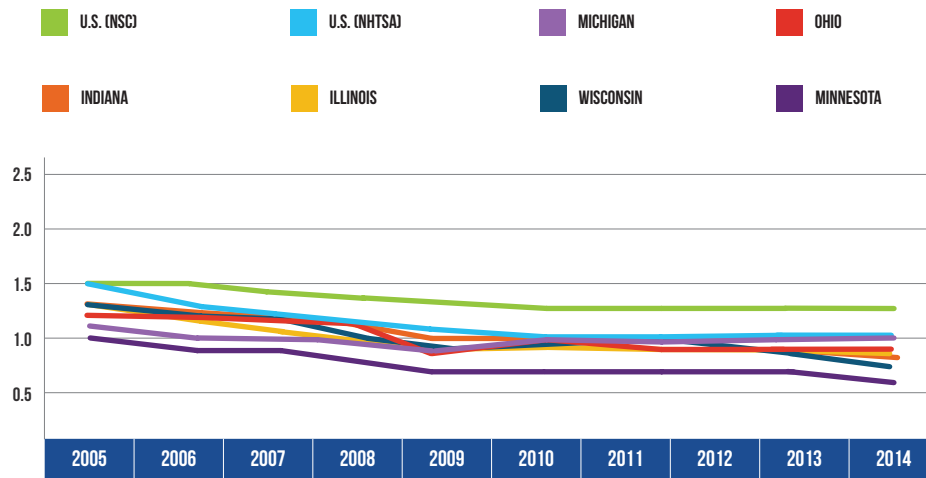
AVERAGE AGE OF DRIVERS IN CRASHES 2005 - 2014



Over the 10-year period, reflecting the demographic trend of increasing age in the general population, the average age of drivers involved in all crashes and had-been-drinking crashes has increased more than five percent in each category. The average age of drivers involved in fatal crashes and had-been-drinking fatal crashes has increased more than three percent in each category.

10 YEAR TRENDS-STATEWIDE (CONTINUED)

MILEAGE DEATH RATES 2005 - 2014



YEAR	U.S. (NSC*)	U.S. (NHTSA**)	MICHIGAN	OHIO	INDIANA	ILLINOIS	WISCONSIN	MINNESOTA
2005	1.5	1.5	1.1	1.2	1.3	1.3	1.3	1.0
2006	1.5	1.4	1.0	1.1	1.2	1.2	1.2	0.9
2007	1.4	1.4	1.0	1.1	1.2	1.2	1.2	0.9
2008	1.4	1.3	1.0	1.1	1.2	1.0	1.0	0.8
2009	1.2	1.2	0.9	0.9	1.0	0.9	0.9	0.7
2010	1.2	1.1	1.0	1.0	1.0	0.9	1.0	0.7
2011	1.2	1.1	0.9	0.9	1.0	0.9	1.0	0.7
2012	1.2	1.1	1.0	1.0	1.0	0.9	1.0	0.7
2013	1.2	1.1	1.0	0.9	1.0	0.9	0.9	0.7
2014	1.2	1.1	0.9	0.9	0.9	0.9	0.8	0.6

* National Safety Council (NSC) reports traffic and nontraffic deaths within a year of the crash.

**National Highway Traffic Safety Administration (NHTSA) reports only traffic deaths that occur within 30 days of the accident.

U.S. data for this table and tables on the following page were provided by the National Safety Council [3], the National Highway Traffic Safety Administration [4], and the Federal Highway Administration [5]. State data for this table and tables on the following page were provided by Ohio [6], Indiana [7], Illinois [8], Wisconsin [9], and Minnesota [10].

10 YEAR TRENDS-STATEWIDE (CONTINUED)

YEAR	U.S. (NSC) FATALITIES	U.S. (NHTSA) FATALITIES	MICHIGAN FATALITIES	OHIO FATALITIES	INDIANA FATALITIES	ILLINOIS FATALITIES	WISCONSIN FATALITIES	MINNESOTA FATALITIES
2005	45,343	43,443	1,129	1,326	938	1,360	801	559
2006	45,316	42,642	1,084	1,239	899	1,254	712	494
2007	43,945	41,059	1,084	1,257	899	1,248	737	510
2008	39,790	37,261	980	1,191	815	1,043	587	455
2009	36,216	33,963	871	1,028	692	911	542	421
2010	35,332	32,885	937	1,081	754	927	562	411
2011	35,303	32,367	889	1,015	749	918	565	368
2012	36,415	33,561	936	1,122	779	956	601	395
2013	35,369	32,850	951	990	777	991	527	387
2014	35,400	32,675	876	1,008	743	924	498	361

YEAR	U.S. (FHWA) VMT	MICHIGAN VMT	OHIO VMT	INDIANA VMT	ILLINOIS VMT	WISCONSIN VMT	MINNESOTA VMT
2005	2,990	103.2	111.5	74.3	107.9	60.0	56.5
2006	2,995	104.0	112.1	74.2	106.8	59.4	56.6
2007	2,996	104.6	111.1	74.1	107.4	59.5	57.4
2008	2,929	100.9	108.3	68.0	105.6	57.5	57.3
2009	2,935	95.9	110.8	68.8	105.7	58.2	56.9
2010	3,000	97.6	113.5	72.9	105.7	59.4	56.8
2011	2,946	94.8	111.7	77.5	103.4	58.6	56.7
2012	2,954	94.3	111.5	76.0	104.5	59.1	57.0
2013	2,972	95.1	112.7	79.4	105.5	59.5	57.0
2014	3,016	99.1	112.8	81.4	105.0	60.0	57.4

VMT described in billions of miles