



2014

**MTCF**  
Michigan Traffic  
Crash Facts

# Michigan Traffic Crash Facts

## Reporting Criteria

Please pay particular attention to the wording when interpreting the three levels of data gathered for this report.

### Crash

The Crash Level analyzes data related to crash events and returns one result per crash.

Examples: Time, weather, and location.

### Units

The Units Level analyzes the experience of the units in the crash and returns one result per vehicle, driver, pedestrian, bicyclist, or train.

Examples: Vehicle type, driver condition, and unit events.

### People

The People Level analyzes the experience of the people involved in the crash and returns one result per occupant/person/party.

Examples: Age, injury severity, and seat belt or helmet use.

### **KABCO Injury Indicator:**

K = Killed

A = Incapacitating Injury

B = Non-incapacitating Injury

C = Possible Injury

O = No Injury

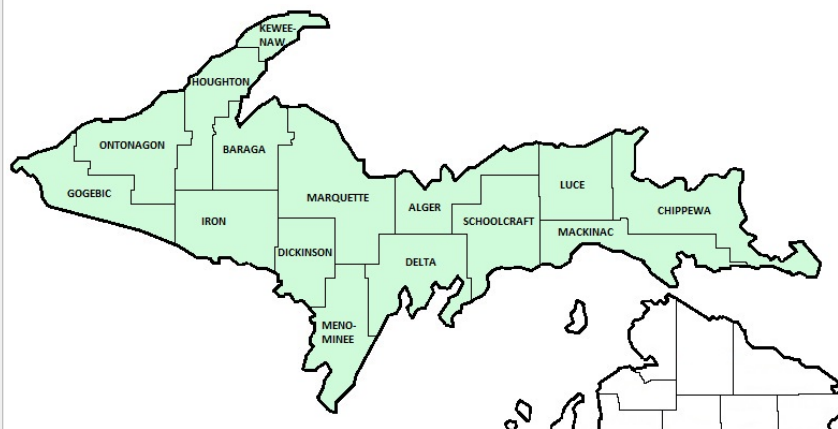
Property Damage Only (PDO)



## Michigan State Police (MSP) District 8 - Upper Peninsula

### 2014 Traffic Crash Data & 2010-2014 5-Year Trends

Beginning in 2011, District 8 is comprised of Alger, Baraga, Chippewa, Delta, Dickinson, Gogebic, Houghton, Iron, Keweenaw, Luce, Mackinac, Marquette, Menominee, Ontonagon, and Schoolcraft counties. Trend tables for this report are based on those counties.



### Sources:

The crashes in this report occurred on public roadways in Michigan and resulted in injuries, fatalities, or property damage (with \$1,000 as a reporting threshold). The information was gathered from Michigan Traffic Crash Report Forms (UD-10) submitted by local police departments, sheriff's offices, and the Michigan State Police. Other related information was obtained from the departments of Transportation, State, and Community Health.

This page left intentionally blank

## District 8 Experience

In 2014:

There were 13,287 drivers involved in 9,126 motor vehicle crashes in MSP District 8. Of those crashes, 20 were classified as fatal, resulting in 23 fatalities. An additional 1,696 persons were injured.

District 8 experienced the highest number of motor vehicle crashes (1,152) in January, the highest number of fatal crashes (3) in October, August, and November, June, and the highest number of persons killed (5) in November.

Michigan driver statistics indicate 6.1 percent of licensed drivers in District 8 were age 16-20, and 10.9 percent of drivers in crashes were also in that age group.

## 2014 - Crashes and Injuries by Month

Month	Crashes				Persons	
	Total	Fatal	Injury	Property Damage Only (PDO)	Fatalities	Injuries
January	1,152	2	162	988	2	209
February	869	2	129	738	2	176
March	779	0	100	679	0	130
April	609	0	54	555	0	69
May	539	1	86	452	1	103
June	650	3	116	531	4	146
July	591	1	129	461	1	176
August	512	3	124	385	3	152
September	591	0	123	468	0	153
October	767	3	81	683	3	101
November	1,087	3	118	966	5	154
December	980	2	99	879	2	127
<b>Total</b>	<b>9,126</b>	<b>20</b>	<b>1,321</b>	<b>7,785</b>	<b>23</b>	<b>1,696</b>

## 2014 - Driver Statistics

Age Group	Statewide			Driver Rates	
	2014 Population	Licensed Drivers	Drivers in Crashes	Per 10k Population	Per 10k Licensed
0 - 15	50,264	1,572	37	7.4	235.4
16 - 20	22,313	13,676	1,446	648.1	1,057.3
21 - 24	19,443	13,153	1,139	585.8	866.0
25 - 64	155,023	140,782	7,861	507.1	558.4
65 +	60,944	54,727	1,889	310.0	345.2
Unknown	--	--	915	--	--
<b>Total</b>	<b>307,987</b>	<b>223,910</b>	<b>13,287</b>	<b>431.4</b>	<b>593.4</b>

## 2014 - Vehicles in Crashes

Vehicle Type	Motor Vehicles		Fatal Crashes		Injury Crashes	PDO Crashes
	Number of Vehicles	% of Total	Number	% of Total	Number	Number
Passenger car & station wagon	8,796	66.2	12	38.7	1,375	7,409
Van & motorhome	574	4.3	1	3.2	82	491
Pickup truck	2,806	21.1	7	22.6	424	2,375
Small truck under 10,000 lbs. GVWR	242	1.8	0	0.0	27	215
Cycle	128	1.0	2	6.5	94	32
Moped	14	0.1	1	3.2	10	3
Go Cart	2	0.0	0	0.0	2	0
Snowmobile	63	0.5	1	3.2	41	21
Off-Road Vehicle (ORV) & All-Terrain Vehicle (ATV)	48	0.4	1	3.2	37	10
Other	53	0.4	0	0.0	10	43
Truck/bus over 10,000 lbs.	367	2.8	6	19.4	62	299
Unknown	194	1.5	0	0.0	7	187
<b>Total</b>	<b>13,287</b>	<b>100.0</b>	<b>31</b>	<b>100.0</b>	<b>2,171</b>	<b>11,085</b>

## MSP District 8 - Upper Peninsula (continued)

### 5-Year Trend - Crashes by Month

Month	2010		2011		2012		2013		2014	
	Total Crashes	Fatal Crashes	Total Crashes	Fatal Crashes	Total Crashes	Fatal Crashes	Total Crashes	Fatal Crashes	Total Crashes	Fatal Crashes
January	1,004	5	1,193	4	1,009	3	1,120	5	1,152	2
February	798	5	706	2	702	2	930	0	869	2
March	576	2	746	3	589	1	660	3	779	0
April	521	2	590	0	516	0	721	3	609	0
May	626	2	604	2	582	1	617	4	539	1
June	741	3	838	6	761	4	705	2	650	3
July	846	3	807	4	765	5	707	3	591	1
August	772	3	750	7	709	2	639	4	512	3
September	880	2	917	2	886	1	696	4	591	0
October	992	8	1,030	3	1,063	2	801	2	767	3
November	1,170	2	1,208	2	1,260	4	1,156	3	1,087	3
December	1,273	3	1,159	4	1,103	5	1,204	3	980	2
<b>Total</b>	<b>10,199</b>	<b>40</b>	<b>10,548</b>	<b>39</b>	<b>9,945</b>	<b>30</b>	<b>9,956</b>	<b>36</b>	<b>9,126</b>	<b>20</b>

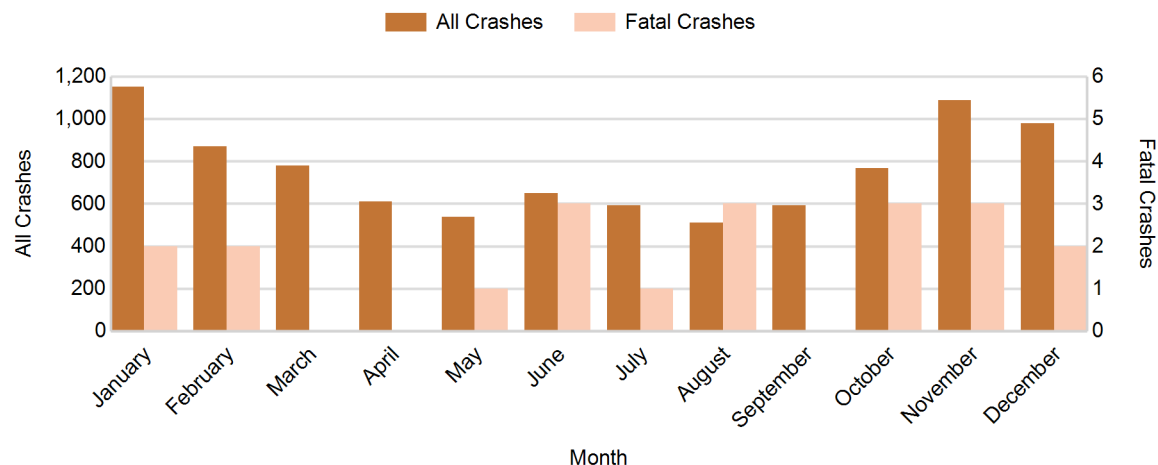
Note: † Indicates that the highest number of total crashes reported in the 5-year period occurred in the same month

### 5-Year Trend - Crashes by Day of Week

Day	2010		2011		2012		2013		2014	
	Total Crashes	Fatal Crashes	Total Crashes	Fatal Crashes	Total Crashes	Fatal Crashes	Total Crashes	Fatal Crashes	Total Crashes	Fatal Crashes
Monday	1,415	2	1,491	3	1,518	5	1,450	4	1,289	2
Tuesday	1,430	3	1,424	2	1,454	5	1,437	5	1,297	3
Wednesday	1,492	2	1,530	8	1,281	4	1,447	8	1,284	2
Thursday	1,486	5	1,644	6	1,463	2	1,479	4	1,367	3
Friday	1,736 †	8	1,663 †	6	1,645 †	4	1,634 †	1	1,588 †	1
Saturday	1,456	13	1,511	7	1,315	6	1,342	7	1,264	8
Sunday	1,184	7	1,285	7	1,269	4	1,167	7	1,037	1
<b>Total</b>	<b>10,199</b>	<b>40</b>	<b>10,548</b>	<b>39</b>	<b>9,945</b>	<b>30</b>	<b>9,956</b>	<b>36</b>	<b>9,126</b>	<b>20</b>

Note: † Indicates that the highest number of total crashes reported in the 5-year period occurred on the same day of the week

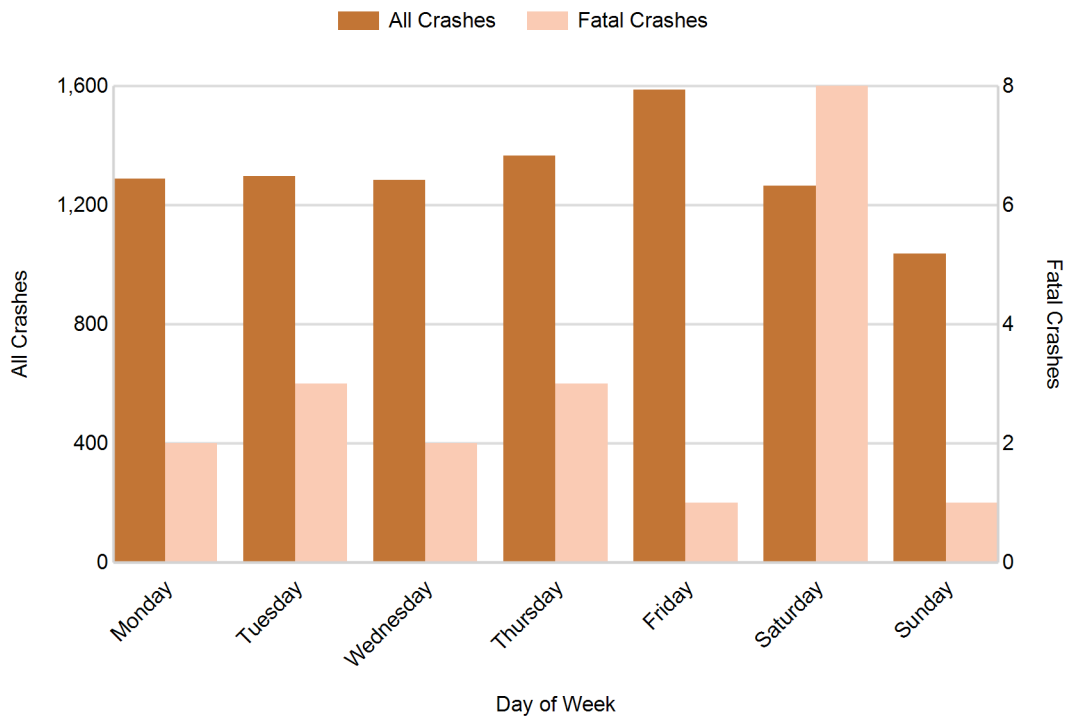
### 2014 Crashes by Month



## 2014 - Crashes by Day of Week

Day	All Crashes		Fatal Crashes		Injury Crashes			PDO Crashes
	Number	% of Total	Number	% of Fatal	A	B	C	Number
Monday	1,289	14.1	2	10.0	19	33	110	1,125
Tuesday	1,297	14.2	3	15.0	21	40	123	1,110
Wednesday	1,284	14.1	2	10.0	19	43	124	1,096
Thursday	1,367	15.0	3	15.0	20	59	127	1,158
Friday	1,588	17.4	1	5.0	33	55	149	1,350
Saturday	1,264	13.9	8	40.0	34	55	105	1,062
Sunday	1,037	11.4	1	5.0	19	41	92	884
<b>Total</b>	<b>9,126</b>	<b>100.0</b>	<b>20</b>	<b>100.0</b>	<b>165</b>	<b>326</b>	<b>830</b>	<b>7,785</b>

## 2014 Day of Week and Severity

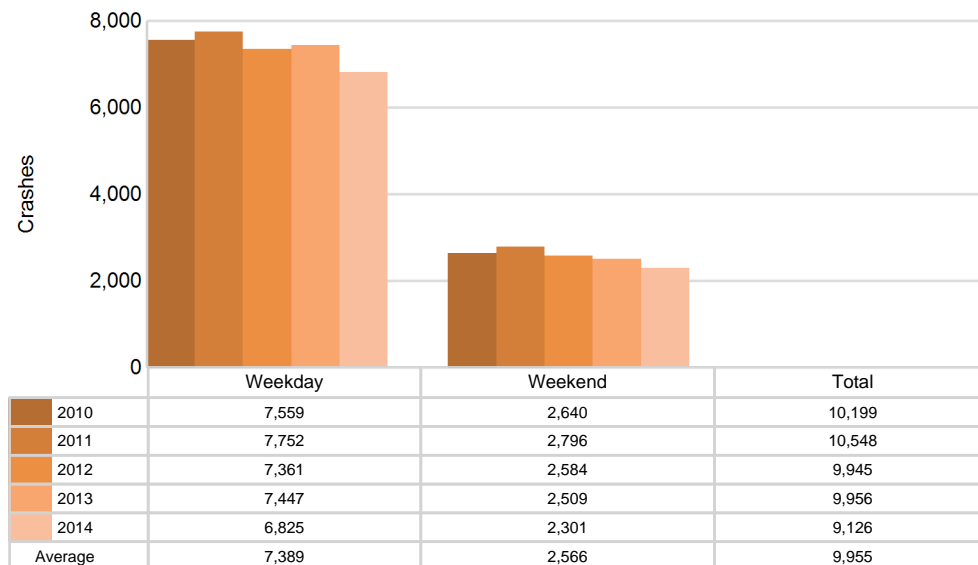


## MSP District 8 - Upper Peninsula (continued)

### 5-Year Trend - Crashes by Weekday and Weekend

Portion of Week	2010		2011		2012		2013		2014	
	Total Crashes	Fatal Crashes	Total Crashes	Fatal Crashes	Total Crashes	Fatal Crashes	Total Crashes	Fatal Crashes	Total Crashes	Fatal Crashes
Weekday	7,559	20	7,752	25	7,361	20	7,447	22	6,825	11
Weekend	2,640	20	2,796	14	2,584	10	2,509	14	2,301	9
<b>Total</b>	<b>10,199</b>	<b>40</b>	<b>10,548</b>	<b>39</b>	<b>9,945</b>	<b>30</b>	<b>9,956</b>	<b>36</b>	<b>9,126</b>	<b>20</b>

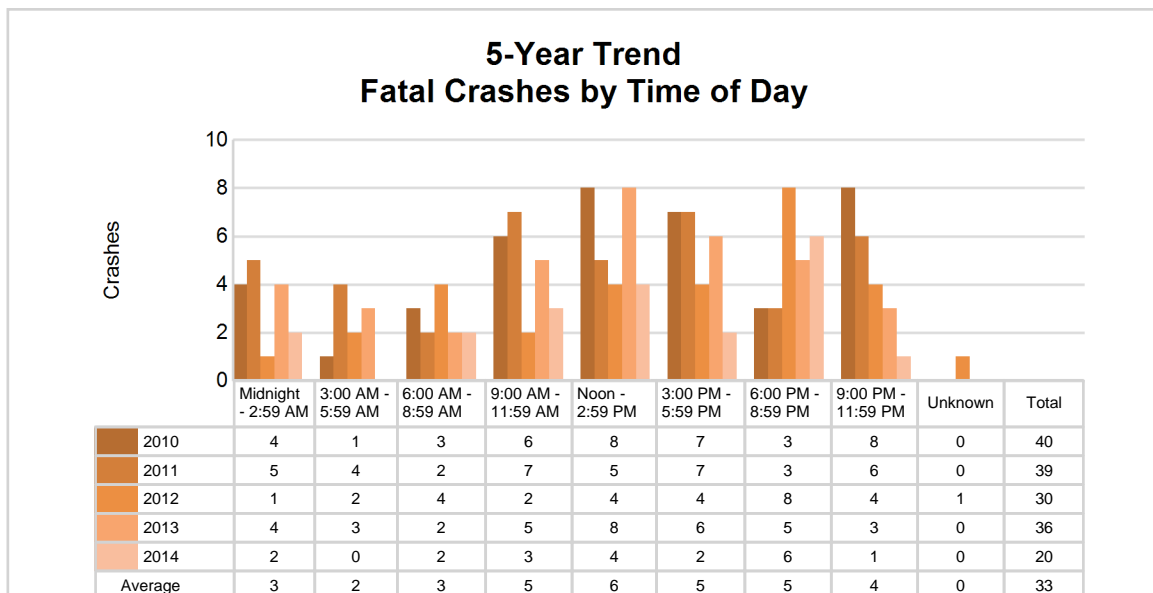
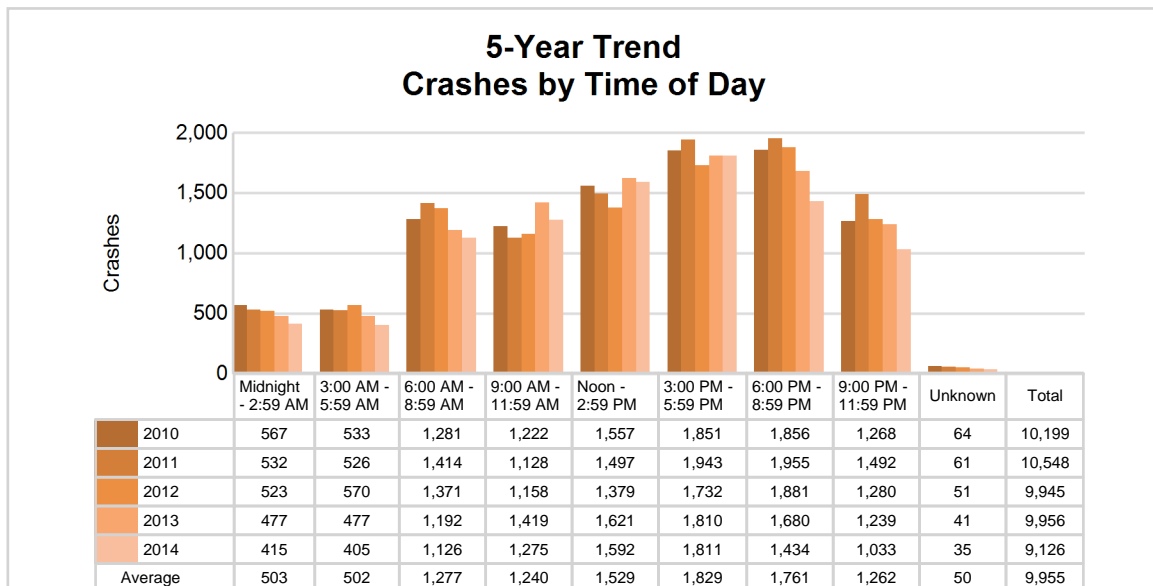
### 5-Year Crash Trends by Weekday (Monday - Friday) and Weekend (Saturday & Sunday)



## 5-Year Trend - Crashes by Time of Day

Time of Day	2010		2011		2012		2013		2014	
	Total Crashes	Fatal Crashes	Total Crashes	Fatal Crashes	Total Crashes	Fatal Crashes	Total Crashes	Fatal Crashes	Total Crashes	Fatal Crashes
Midnight - 2:59 AM	567	4	532	5	523	1	477	4	415	2
3:00 AM - 5:59 AM	533	1	526	4	570	2	477	3	405	0
6:00 AM - 8:59 AM	1,281	3	1,414	2	1,371	4	1,192	2	1,126	2
9:00 AM - 11:59 AM	1,222	6	1,128	7	1,158	2	1,419	5	1,275	3
Noon - 2:59 PM	1,557	8	1,497	5	1,379	4	1,621	8	1,592	4
3:00 PM - 5:59 PM	1,851	7	1,943	7	1,732	4	1,810	6	1,811	2
6:00 PM - 8:59 PM	1,856	3	1,955	3	1,881	8	1,680	5	1,434	6
9:00 PM - 11:59 PM	1,268	8	1,492	6	1,280	4	1,239	3	1,033	1
Unknown	64	0	61	0	51	1	41	0	35	0
<b>Total</b>	<b>10,199</b>	<b>40</b>	<b>10,548</b>	<b>39</b>	<b>9,945</b>	<b>30</b>	<b>9,956</b>	<b>36</b>	<b>9,126</b>	<b>20</b>

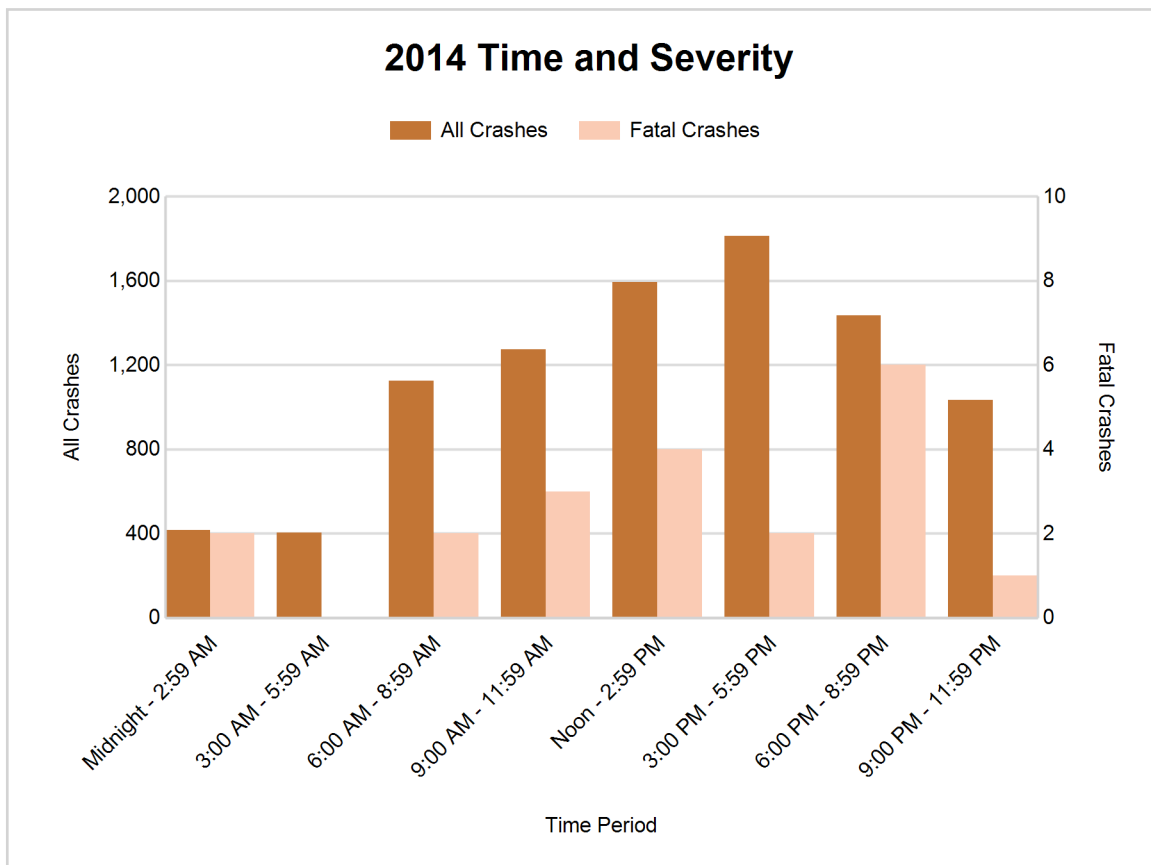
Note: † Indicates that the highest number of total crashes reported in the 5-year period occurred in the same time period



## MSP District 8 - Upper Peninsula (continued)

### 2014 - Time and Severity

Time of Day	All Crashes		Fatal Crashes		Injury Crashes			PDO Crashes
	Number	% of Total	Number	% of Fatal	A	B	C	Number
Midnight - 2:59 AM	415	4.5	2	10.0	12	16	26	359
3:00 AM - 5:59 AM	405	4.4	0	0.0	7	14	23	361
6:00 AM - 8:59 AM	1,126	12.3	2	10.0	16	23	81	1,004
9:00 AM - 11:59 AM	1,275	14.0	3	15.0	15	49	153	1,055
Noon - 2:59 PM	1,592	17.4	4	20.0	31	65	194	1,298
3:00 PM - 5:59 PM	1,811	19.8	2	10.0	34	79	194	1,502
6:00 PM - 8:59 PM	1,434	15.7	6	30.0	34	54	99	1,241
9:00 PM - 11:59 PM	1,033	11.3	1	5.0	16	26	60	930
Unknown	35	0.4	0	0.0	0	0	0	35
<b>Total</b>	<b>9,126</b>	<b>100.0</b>	<b>20</b>	<b>100.0</b>	<b>165</b>	<b>326</b>	<b>830</b>	<b>7,785</b>

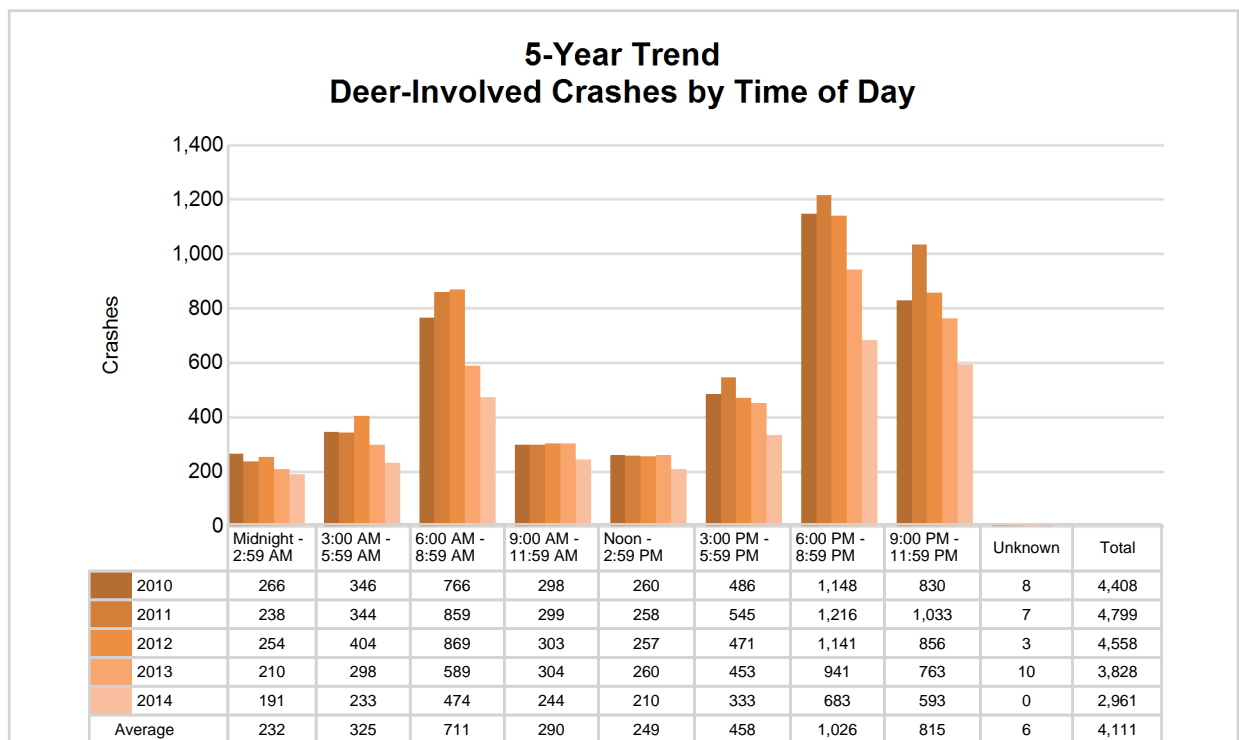




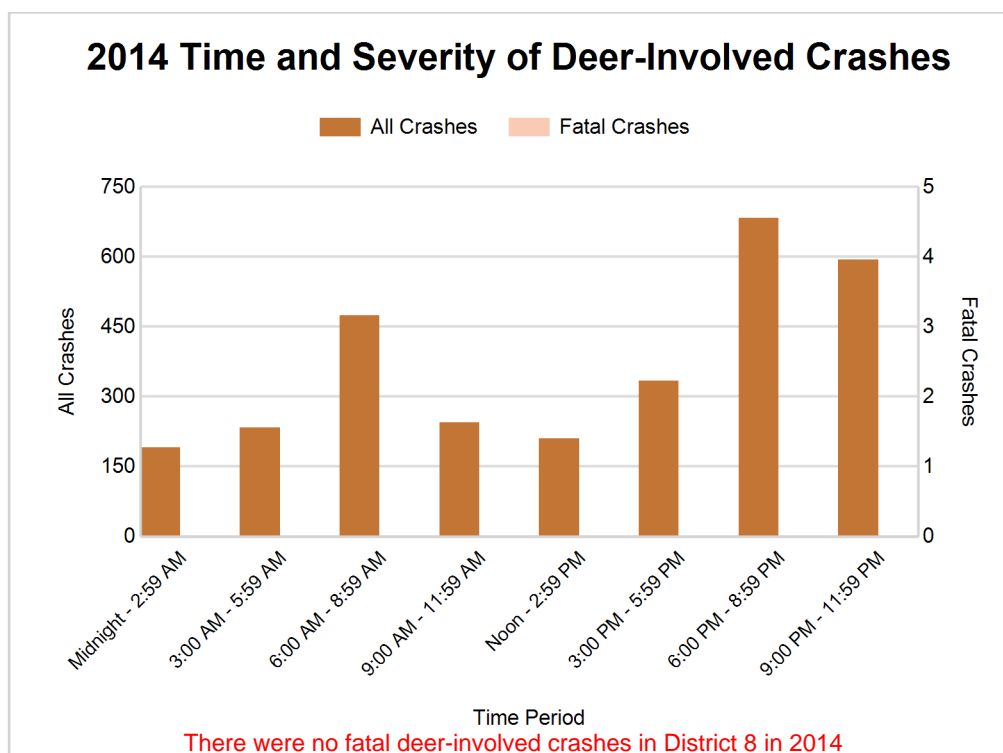
## 5-Year Trend - Deer-Involved Crashes by Time of Day

Time of Day	2010		2011		2012		2013		2014	
	Total Crashes	Fatal Crashes	Total Crashes	Fatal Crashes	Total Crashes	Fatal Crashes	Total Crashes	Fatal Crashes	Total Crashes	Fatal Crashes
Midnight - 2:59 AM	266	0	238	0	254	0	210	0	191	0
3:00 AM - 5:59 AM	346	0	344	0	404	0	298	0	233	0
6:00 AM - 8:59 AM	766	1	859	0	869	0	589	0	474	0
9:00 AM - 11:59 AM	298	0	299	0	303	0	304	0	244	0
Noon - 2:59 PM	260	0	258	0	257	0	260	0	210	0
3:00 PM - 5:59 PM	486	0	545	0	471	0	453	1	333	0
6:00 PM - 8:59 PM	1,148 †	0	1,216 †	0	1,141 †	1	941 †	1	683 †	0
9:00 PM - 11:59 PM	830	1	1,033	1	856	0	763	0	593	0
Unknown	8	0	7	0	3	0	10	0	0	0
<b>Total</b>	<b>4,408</b>	<b>2</b>	<b>4,799</b>	<b>1</b>	<b>4,558</b>	<b>1</b>	<b>3,828</b>	<b>2</b>	<b>2,961</b>	<b>0</b>

Note: † Indicates that the highest number of total crashes reported in the 5-year period occurred in the same time period



## MSP District 8 - Upper Peninsula (continued)



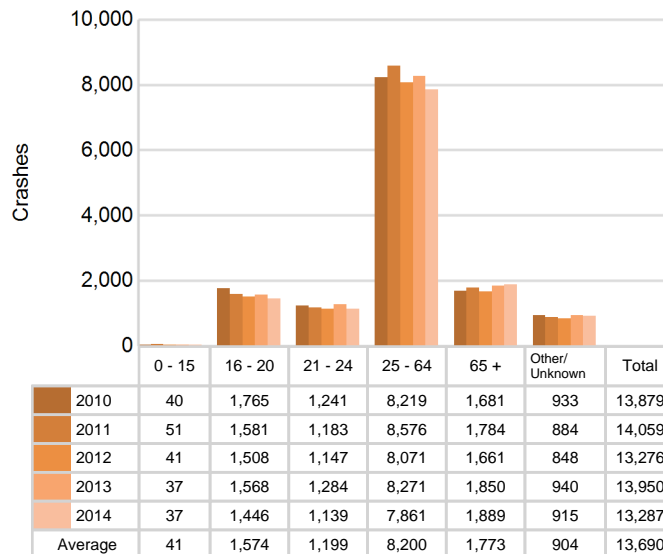
### 2014 - Reported Motor Vehicle Crashes by County

County	Crashes											Persons	
	Total	Fatal	Injury	Property Damage	Inter-state	US Route	State Route	Local Street	Alcohol-Involved	Drug-Involved	Deer-Involved	Fatalities	Injuries
Alger	264	0	55	209	0	35	108	121	9	1	83	0	72
Baraga	284	0	34	250	0	114	55	115	9	1	158	0	47
Chippewa	949	3	144	802	224	0	202	523	25	4	238	3	179
Delta	1,368	2	180	1,186	0	494	215	659	29	8	532	2	236
Dickinson	907	0	116	791	0	299	263	345	23	4	419	0	141
Gogebic	241	1	34	206	0	127	17	97	13	2	50	1	41
Houghton	1,011	1	135	875	0	314	294	403	45	7	171	1	160
Iron	470	2	54	414	0	229	70	171	19	1	250	2	69
Keweenaw	77	0	16	61	0	29	11	37	6	0	22	0	23
Luce	178	2	27	149	0	0	97	81	4	2	82	2	32
Mackinac	547	0	60	487	113	140	112	182	19	4	267	0	80
Marquette	1,838	5	312	1,521	0	505	249	1,084	72	21	249	6	413
Menominee	465	3	94	368	0	169	58	238	25	3	149	5	125
Ontonagon	258	1	31	226	0	59	129	70	8	1	151	1	38
Schoolcraft	269	0	29	240	0	83	86	100	8	4	140	0	40
<b>Total</b>	<b>9,126</b>	<b>20</b>	<b>1,321</b>	<b>7,785</b>	<b>337</b>	<b>2,597</b>	<b>1,966</b>	<b>4,226</b>	<b>314</b>	<b>63</b>	<b>2,961</b>	<b>23</b>	<b>1,696</b>

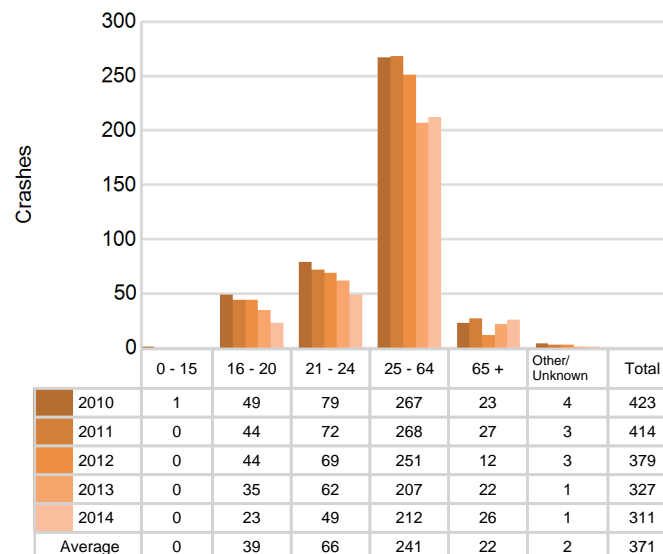
## 5-Year Trend - Drivers in Crashes Coded Drinking by Driver Age

Driver Age	2010		2011		2012		2013		2014	
	Total Drivers in Crashes	Total Drivers Coded Drinking	Total Drivers in Crashes	Total Drivers Coded Drinking	Total Drivers in Crashes	Total Drivers Coded Drinking	Total Drivers in Crashes	Total Drivers Coded Drinking	Total Drivers in Crashes	Total Drivers Coded Drinking
0 - 15	40	1	51	0	41	0	37	0	37	0
16 - 20	1,765	49	1,581	44	1,508	44	1,568	35	1,446	23
21 - 24	1,241	79	1,183	72	1,147	69	1,284	62	1,139	49
25 - 64	8,219	267	8,576	268	8,071	251	8,271	207	7,861	212
65 +	1,681	23	1,784	27	1,661	12	1,850	22	1,889	26
Unknown	933	4	884	3	848	3	940	1	915	1
<b>Total</b>	<b>13,879</b>	<b>423</b>	<b>14,059</b>	<b>414</b>	<b>13,276</b>	<b>379</b>	<b>13,950</b>	<b>327</b>	<b>13,287</b>	<b>311</b>

**5-Year Trend  
Total Drivers in Crashes by Age**



**5-Year Trend  
Total Drivers Coded Drinking by Age**



# MSP District 8 - Upper Peninsula (continued)

## 2014 - Bodily Alcohol Concentration (BAC) Results Among All Vehicle Drivers in Alcohol-Involved Crashes by Age

Age Group	Drivers				BAC Result Range for Drivers Coded Drinking				
	Total Drivers in Alcohol-Involved Crashes	Total Drivers Tested in all Crashes	Total Drivers Coded Drinking, Tested	Total Drivers Coded Drinking	BAC = 0.00	BAC 0.01 g/dL to 0.07 g/dL	BAC 0.08 g/dL to 0.16 g/dL	BAC 0.17 g/dL and Above	BAC Not Reported
0 - 15	0	1	0	0	0	0	0	0	0
16 - 20	30	33	22	23	1	8	7	3	4
21 - 24	51	46	36	49	0	6	6	15	22
25 - 64	244	225	147	212	1	17	32	54	108
65 +	29	35	19	26	0	7	8	1	10
Unknown	33	0	0	1	0	0	0	0	1
<b>Total</b>	<b>387</b>	<b>340</b>	<b>224</b>	<b>311</b>	<b>2</b>	<b>38</b>	<b>53</b>	<b>73</b>	<b>145</b>

Notes: BAC measured in grams (g) per deciliter (dL).

BAC may not be reported if drivers are not tested or if the results are not available immediately (as in the case of a blood test).

A driver may be coded by the officer as drinking even though no test is administered.

## Alcohol-Involved Crashes

In 2014, there were 387 drivers in alcohol-involved crashes; 311 (80.4%) of those drivers were coded as had-been-drinking by the officer on the crash form.

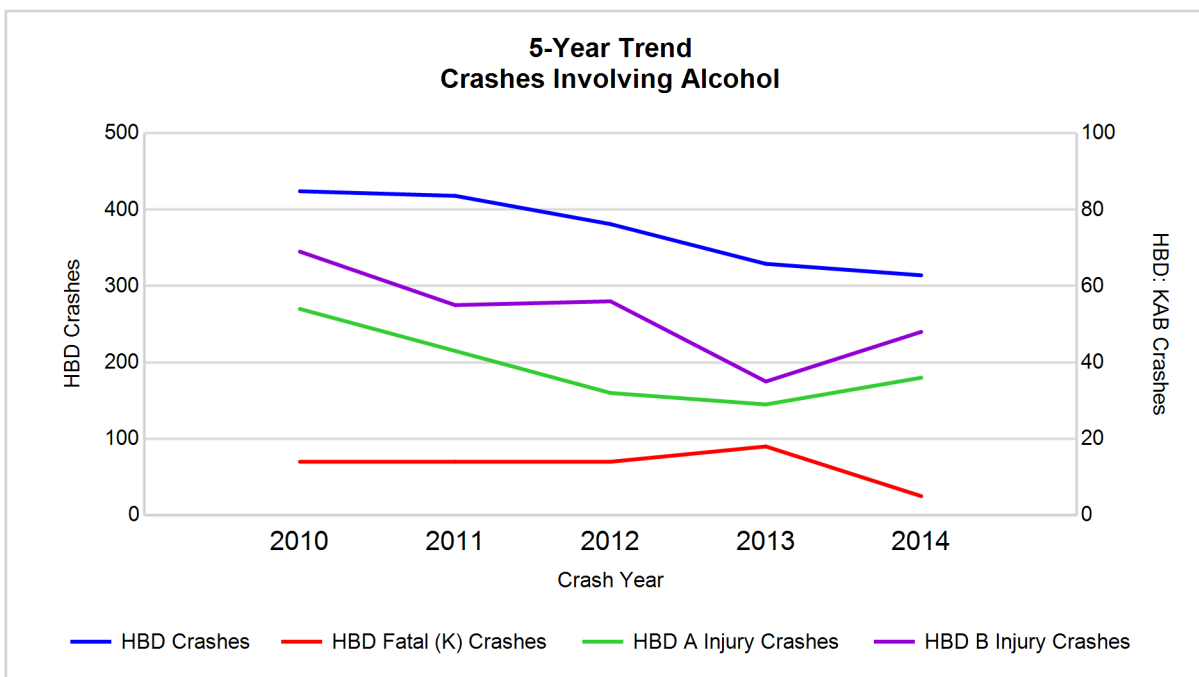
- 126 (40.5%) of the 311 drivers had a blood alcohol concentration (BAC) of 0.08 g/dL (grams per deciliter) or greater, and 73 (57.9%) of the 126 drivers had a BAC at or above 0.17 g/dL.
- 224 (72.0%) of the 311 drivers were coded as had-been-drinking and were tested for alcohol consumption.

## 5-Year Trend - Crashes Involving Alcohol

Year	All Crashes	HBD Crashes	% HBD	Fatal Crashes	HBD Fatal Crashes	% HBD	A Injury Crashes	HBD A Injury Crashes	% HBD	B Injury Crashes	HBD B Injury Crashes	% HBD
2010	10,199	424	4.2	40	14	35.0	245	54	22.0	441	69	15.6
2011	10,548	418	4.0	39	14	35.9	234	43	18.4	393	55	14.0
2012	9,945	381	3.8	30	14	46.7	185	32	17.3	392	56	14.3
2013	9,956	329	3.3	36	18	50.0	168	29	17.3	323	35	10.8
2014	9,126*	314*	3.4	20*	5*	25.0*	165*	36	21.8	326	48	14.7

Note: \* Indicates that the most recent year is the lowest number or percentage reported in the 5-year period in that column

\*\* Indicates that the most recent year is the highest number or percentage reported in the 5-year period in that column



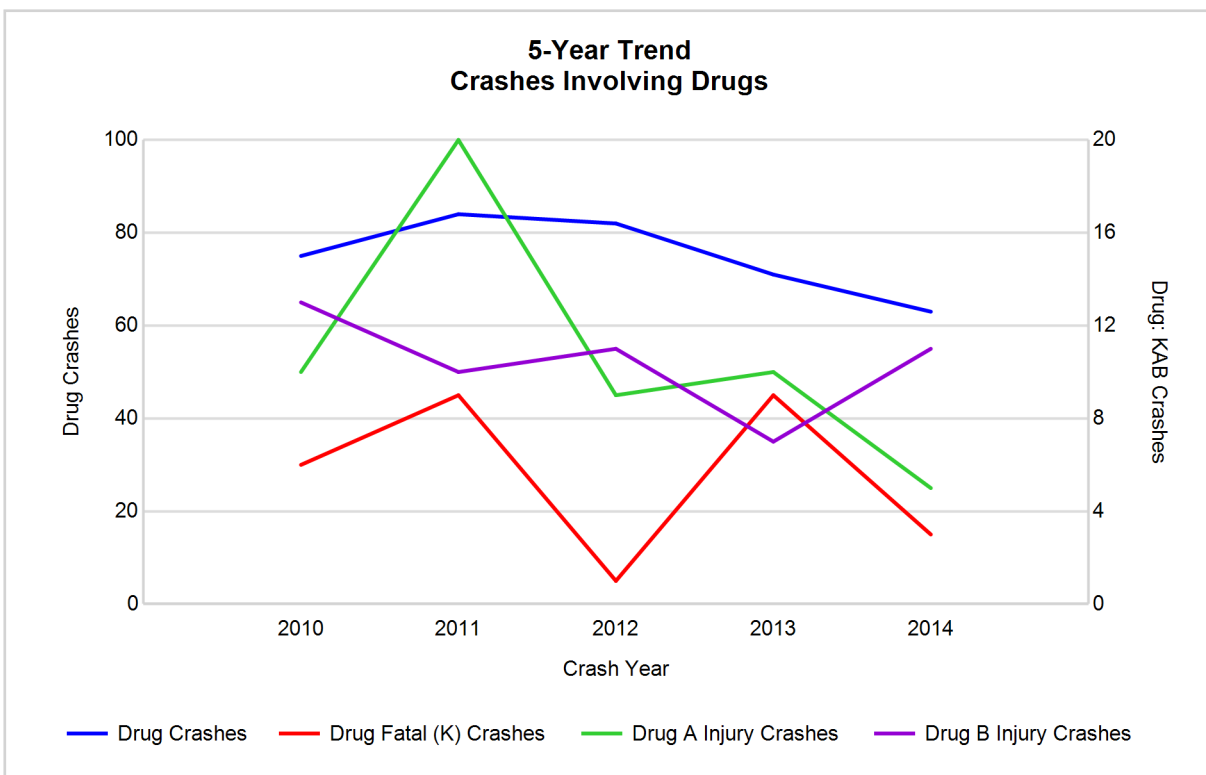
Note: Had-Been-Drinking (HBD)

## 5-Year Trend - Crashes Involving Drugs

Year	All Crashes	Drug Crashes	% Drug	Fatal Crashes	Drug Fatal Crashes	% Drug	A Injury Crashes	Drug A Injury Crashes	% Drug	B Injury Crashes	Drug B Injury Crashes	% Drug
2010	10,199	75	0.7	40	6	15.0	245	10	4.1	441	13	2.9
2011	10,548	84	0.8	39	9	23.1	234	20	8.5	393	10	2.5
2012	9,945	82	0.8	30	1	3.3	185	9	4.9	392	11	2.8
2013	9,956	71	0.7	36	9	25.0	168	10	6.0	323	7	2.2
2014	9,126*	63*	0.7	20*	3	15.0	165*	5*	3.0*	326	11	3.4**

Note: \* Indicates that the most recent year is the lowest number or percentage reported in the 5-year period in that column

\*\* Indicates that the most recent year is the highest number or percentage reported in the 5-year period in that column



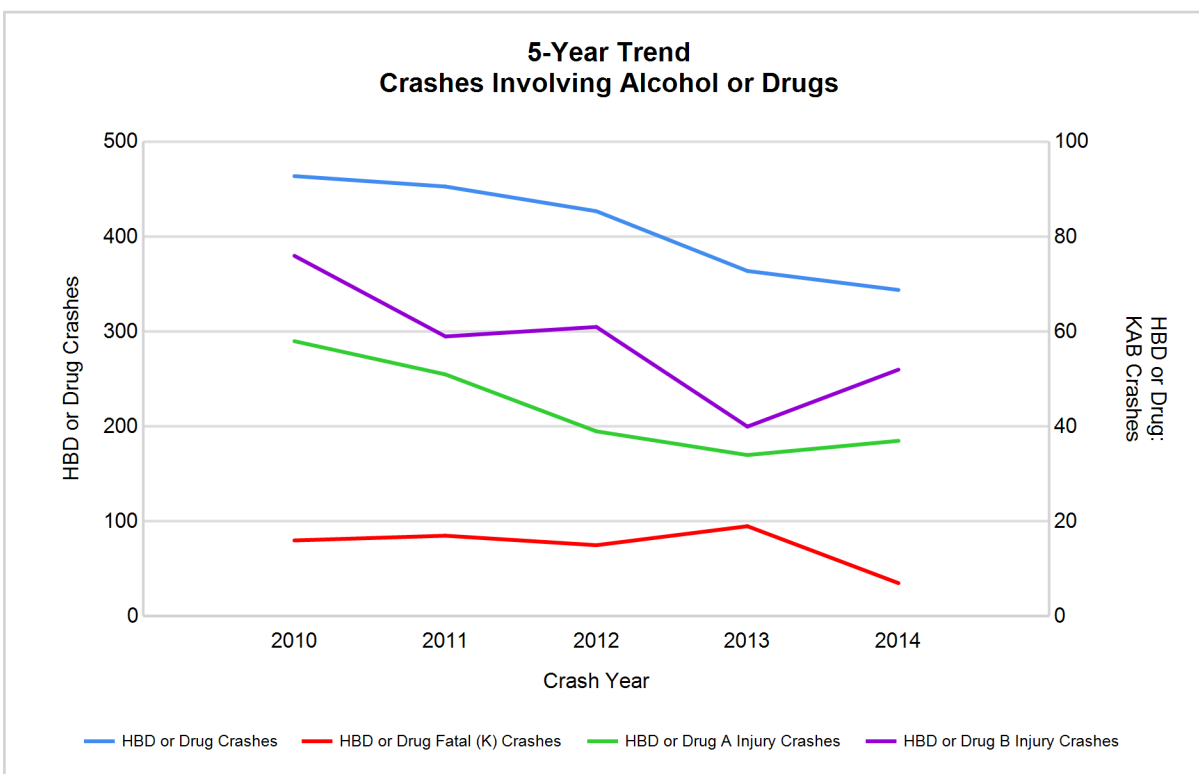
## MSP District 8 - Upper Peninsula (continued)

### 5-Year Trend - Crashes Involving Alcohol or Drugs

Year	All Crashes	HBD or Drug Crashes	% HBD or Drug	Fatal Crashes	HBD or Drug Fatal Crashes	% HBD or Drug	A Injury Crashes	HBD or Drug A Injury Crashes	% HBD or Drug	B Injury Crashes	HBD or Drug B Injury Crashes	% HBD or Drug
2010	10,199	464	4.5	40	16	40.0	245	58	23.7	441	76	17.2
2011	10,548	453	4.3	39	17	43.6	234	51	21.8	393	59	15.0
2012	9,945	427	4.3	30	15	50.0	185	39	21.1	392	61	15.6
2013	9,956	364	3.7	36	19	52.8	168	34	20.2	323	40	12.4
2014	9,126*	344*	3.8	20*	7*	35.0*	165*	37	22.4	326	52	16.0

Note: \* Indicates that the most recent year is the lowest number or percentage reported in the 5-year period in that column

\*\* Indicates that the most recent year is the highest number or percentage reported in the 5-year period in that column



Note: Had-Been-Drinking (HBD)

# MSP District 8 - Upper Peninsula (continued)

13

## 2014 - Restraints Worn Among Vehicle Drivers and Injured Passengers by Vehicle Type

Vehicle Type	Total Occupants			Fatalities			A - Incapacitating			B - Non-incapacitating			C - Possible Injury			No Injury		
	Total	Used Restraint	%	Total	Used Restraint	%	Total	Used Restraint	%	Total	Used Restraint	%	Total	Used Restraint	%	Total	Used Restraint	%
Passenger car & station wagon	9,063	8,212	90.6	11	9	81.8	87	68	78.2	227	196	86.3	755	703	93.1	7,517	7,234	96.2
Van & motorhome	597	542	90.8	0	0	0.0	9	8	88.9	11	11	100.0	48	43	89.6	495	480	97.0
Pickup truck	2,882	2,600	90.2	4	1	25.0	24	15	62.5	49	42	85.7	186	175	94.1	2,485	2,366	95.2
Small truck under 10,000 lbs. GVWR	252	226	89.7	0	0	0.0	4	3	75.0	4	3	75.0	14	11	78.6	221	208	94.1
Cycle	143	96	67.1	3	0	0.0	38	25	65.8	36	25	69.4	28	21	75.0	34	25	73.5
Moped	14	10	71.4	1	0	0.0	0	0	0.0	8	7	87.5	2	0	0.0	3	3	100.0
Go Cart	4	4	100.0	0	0	0.0	2	2	100.0	1	1	100.0	1	1	100.0	0	0	0.0
Snowmobile	64	58	90.6	1	1	100.0	11	8	72.7	8	8	100.0	18	18	100.0	23	23	100.0
Off-Road Vehicle (ORV) & All-Terrain Vehicle (ATV)	50	40	80.0	1	1	100.0	10	9	90.0	14	11	78.6	10	7	70.0	14	11	78.6
Other	54	25	46.3	0	0	0.0	0	0	0.0	1	0	0.0	2	1	50.0	47	24	51.1
Truck/bus over 10,000 lbs.	371	351	94.6	1	0	0.0	1	0	0.0	3	2	66.7	15	12	80.0	347	337	97.1
Unknown	194	0	0.0	0	0	0.0	0	0	0.0	0	0	0.0	0	0	0.0	3	0	0.0
<b>Total</b>	<b>13,688</b>	<b>12,164</b>	<b>88.9</b>	<b>22</b>	<b>12</b>	<b>54.5</b>	<b>186</b>	<b>138</b>	<b>74.2</b>	<b>362</b>	<b>306</b>	<b>84.5</b>	<b>1,079</b>	<b>992</b>	<b>91.9</b>	<b>11,189</b>	<b>10,711</b>	<b>95.7</b>

Note: Restraint Use includes shoulder belt only used, lap belt only used, both lap and shoulder belts used, child restraint used, restraint failure, and helmet worn.

## 2014 - Restraints Worn Among Vehicle Drivers and Injured Passengers by Age

Age Group	Total Occupants			Fatalities			A - Incapacitating			B - Non-incapacitating			C - Possible Injury			No Injury		
	Total	Used Restraint	%	Total	Used Restraint	%	Total	Used Restraint	%	Total	Used Restraint	%	Total	Used Restraint	%	Total	Used Restraint	%
0 - 15	126	116	92.1	4	2	50.0	11	10	90.9	24	20	83.3	64	62	96.9	23	22	95.7
16 - 20	1,514	1,437	94.9	2	2	100.0	22	16	72.7	59	50	84.7	141	120	85.1	1,287	1,246	96.8
21 - 24	1,177	1,119	95.1	1	0	0.0	20	11	55.0	32	27	84.4	107	98	91.6	1,013	983	97.0
25 - 64	8,013	7,627	95.2	12	5	41.7	108	79	73.1	190	159	83.7	620	575	92.7	7,077	6,807	96.2
65 +	1,939	1,858	95.8	3	3	100.0	24	22	91.7	57	50	87.7	142	134	94.4	1,711	1,649	96.4
Unknown	919	7	0.8	0	0	0.0	1	0	0.0	0	0	0.0	5	3	60.0	78	4	5.1
<b>Total</b>	<b>13,688</b>	<b>12,164</b>	<b>88.9</b>	<b>22</b>	<b>12</b>	<b>54.5</b>	<b>186</b>	<b>138</b>	<b>74.2</b>	<b>362</b>	<b>306</b>	<b>84.5</b>	<b>1,079</b>	<b>992</b>	<b>91.9</b>	<b>11,189</b>	<b>10,711</b>	<b>95.7</b>

Note: Restraint Use includes shoulder belt only used, lap belt only used, both lap and shoulder belts used, child restraint used, restraint failure, and helmet worn.

## MSP District 8 - Upper Peninsula (continued)

## 5-Year Trend - Restraint Use Among Drivers

Restraint Use	2010			2011			2012			2013			2014		
	Drivers	Fatal Drivers	Injured Drivers	Drivers	Fatal Drivers	Injured Drivers	Drivers	Fatal Drivers	Injured Drivers	Drivers	Fatal Drivers	Injured Drivers	Drivers	Fatal Drivers	Injured Drivers
No belts available	64	0	17	151	0	15	181	0	18	129	1	13	80	0	9
Shoulder belt only used	24	0	3	34	0	7	46	0	3	37	1	8	55	0	4
Lap belt only used	32	0	2	31	0	4	37	0	6	52	0	3	62	1	6
Both lap & shoulder belts used	12,064	8	1,046	12,225	11	1,065	11,462	7	948	12,118	10	1,015	11,515	7	967
No belts used	118	9	59	160	7	77	116	5	53	118	9	41	112	4	39
Child restraint used	1	0	1	0	0	0	0	0	0	0	0	0	0	0	0
Child restraint not used, unavailable or improper use	5	0	0	5	0	0	0	0	0	1	0	0	0	0	0
Restraint failure	3	0	1	12	0	0	10	0	0	10	0	0	6	0	0
Restraint use unknown	360	2	47	326	2	40	302	0	46	298	2	26	300	0	39
Helmet worn	224	7	155	189	9	134	216	2	168	170	4	113	194	1	130
Helmet not worn	16	1	10	17	1	14	58	6	42	60	4	42	39	2	29
Helmet use unknown	5	0	3	7	1	3	11	0	4	12	0	9	12	0	7
Uncoded & errors	963	0	13	902	0	3	837	0	2	945	0	2	912	0	3
<b>Total</b>	<b>13,879</b>	<b>27</b>	<b>1,357</b>	<b>14,059</b>	<b>31</b>	<b>1,362</b>	<b>13,276</b>	<b>20</b>	<b>1,290</b>	<b>13,950</b>	<b>31</b>	<b>1,272</b>	<b>13,287</b>	<b>15</b>	<b>1,233</b>

## 5-Year Trend - Restraint Use Among Drivers Coded Drinking

Restraint Use	2010			2011			2012			2013			2014		
	Drivers	Fatal Drivers	Injured Drivers	Drivers	Fatal Drivers	Injured Drivers	Drivers	Fatal Drivers	Injured Drivers	Drivers	Fatal Drivers	Injured Drivers	Drivers	Fatal Drivers	Injured Drivers
No belts available	4	0	2	3	0	1	6	0	1	3	1	0	1	0	1
Shoulder belt only used	0	0	0	1	0	0	1	0	0	3	0	1	1	0	0
Lap belt only used	1	0	0	1	0	1	1	0	1	2	0	0	0	0	0
Both lap & shoulder belts used	252	0	78	283	2	84	244	2	61	206	3	50	204	0	57
No belts used	40	7	17	43	3	30	27	3	19	27	6	13	26	2	16
Child restraint used	0	0	0	0	0	0	0	0	0	0	0	0	0	0	0
Child restraint not used, unavailable or improper use	0	0	0	0	0	0	0	0	0	0	0	0	0	0	0
Restraint failure	0	0	0	0	0	0	1	0	0	1	0	0	0	0	0
Restraint use unknown	85	0	27	59	0	16	68	0	17	61	1	11	56	0	16
Helmet worn	29	3	23	10	4	5	17	1	15	9	2	2	13	1	9
Helmet not worn	3	1	2	7	0	6	10	2	8	11	2	9	7	0	6
Helmet use unknown	1	0	0	3	1	2	1	0	0	2	0	2	2	0	2
Uncoded & errors	8	0	3	4	0	1	3	0	0	2	0	0	1	0	0
<b>Total</b>	<b>423</b>	<b>11</b>	<b>152</b>	<b>414</b>	<b>10</b>	<b>146</b>	<b>379</b>	<b>8</b>	<b>122</b>	<b>327</b>	<b>15</b>	<b>88</b>	<b>311</b>	<b>3</b>	<b>107</b>

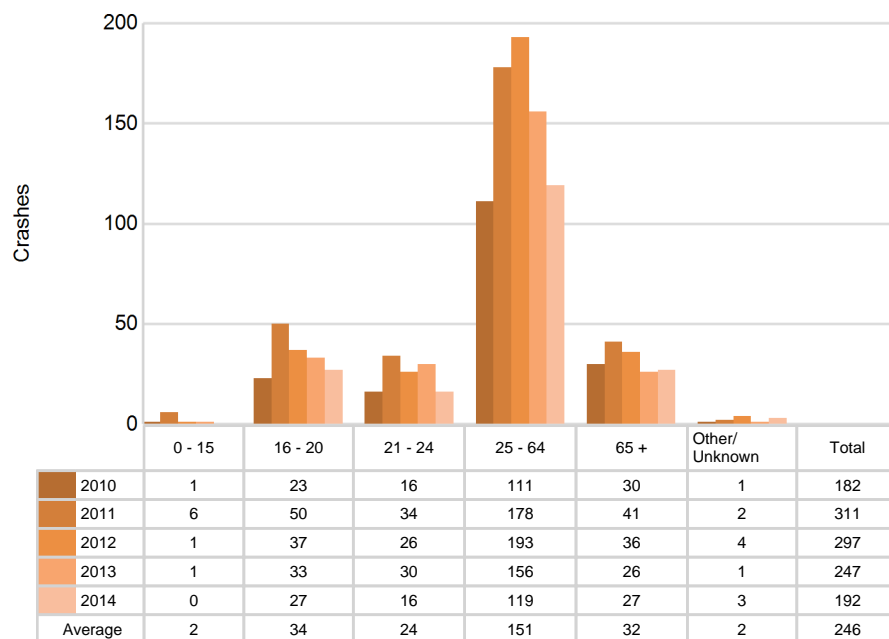


## 5-Year Trend - Seatbelt Not Used Among Drivers by Age

Age Group	2010			2011			2012			2013			2014		
	Drivers	Fatal Drivers	Injured Drivers	Drivers	Fatal Drivers	Injured Drivers	Drivers	Fatal Drivers	Injured Drivers	Drivers	Fatal Drivers	Injured Drivers	Drivers	Fatal Drivers	Injured Drivers
0 - 15	1	0	1	6	0	2	1	0	1	1	0	1	0	0	0
16 - 20	23	1	14	50	0	20	37	0	10	33	0	9	27	0	10
21 - 24	16	0	8	34	1	8	26	0	11	30	2	6	16	1	7
25 - 64	111	7	40	178	4	49	193	4	43	156	8	29	119	3	27
65 +	30	1	13	41	2	13	36	1	6	26	0	9	27	0	4
Unknown	1	0	0	2	0	0	4	0	0	1	0	0	3	0	0
<b>Total</b>	<b>182</b>	<b>9</b>	<b>76</b>	<b>311</b>	<b>7</b>	<b>92</b>	<b>297</b>	<b>5</b>	<b>71</b>	<b>247</b>	<b>10</b>	<b>54</b>	<b>192</b>	<b>4</b>	<b>48</b>

Note: Seatbelt Not Used includes no belts available or no belts used.

## 5-Year Trend Driver Seatbelt Not Used



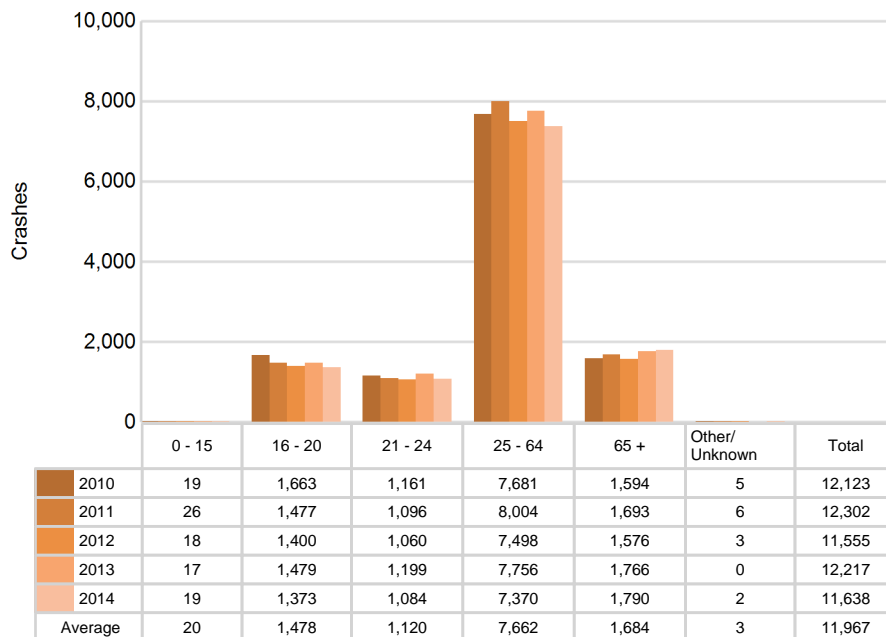
# MSP District 8 - Upper Peninsula (continued)

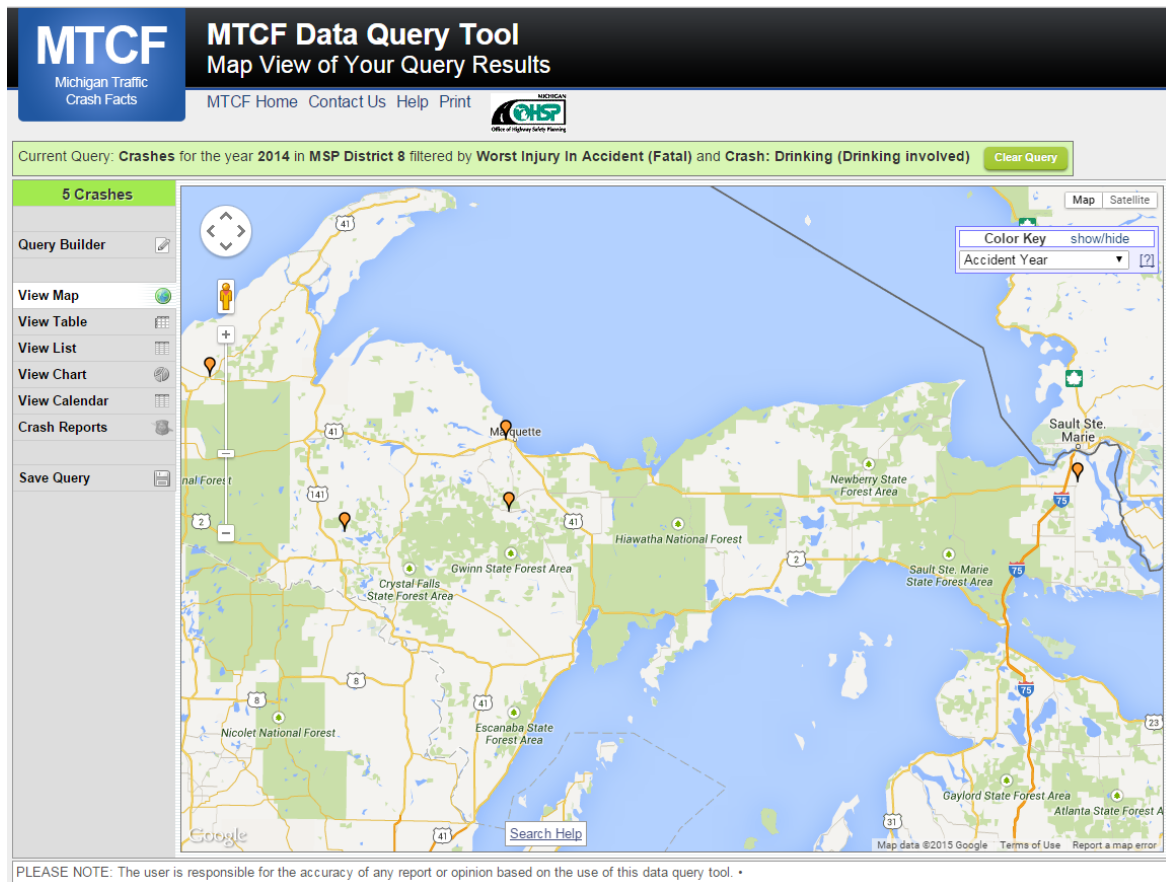
## 5-Year Trend - Seatbelt Used Among Drivers by Age

Age Group	2010			2011			2012			2013			2014		
	Drivers	Fatal Drivers	Injured Drivers	Drivers	Fatal Drivers	Injured Drivers	Drivers	Fatal Drivers	Injured Drivers	Drivers	Fatal Drivers	Injured Drivers	Drivers	Fatal Drivers	Injured Drivers
0 - 15	19	0	1	26	0	1	18	0	2	17	0	3	19	0	2
16 - 20	1,663	0	174	1,477	0	157	1,400	0	148	1,479	4	134	1,373	1	130
21 - 24	1,161	0	112	1,096	1	132	1,060	0	85	1,199	0	108	1,084	0	101
25 - 64	7,681	7	592	8,004	8	631	7,498	5	573	7,756	1	616	7,370	4	600
65 +	1,594	1	173	1,693	2	155	1,576	2	149	1,766	6	165	1,790	3	144
Unknown	5	0	0	6	0	0	3	0	0	0	0	0	2	0	0
<b>Total</b>	<b>12,123</b>	<b>8</b>	<b>1,052</b>	<b>12,302</b>	<b>11</b>	<b>1,076</b>	<b>11,555</b>	<b>7</b>	<b>957</b>	<b>12,217</b>	<b>11</b>	<b>1,026</b>	<b>11,638</b>	<b>8</b>	<b>977</b>

Note: Seatbelt Used includes shoulder belt only used, lap belt only used, both lap and shoulder belts used, and restraint failure.

## 5-Year Trend Driver Seatbelt Used





The picture above represents all 2014 alcohol-involved fatal crashes in District 8.

In 2014, there were 314 alcohol-involved crashes in District 8:

- 5 K - Fatal Crashes
- 36 A - Incapacitating Injury Crashes
- 48 B - Non-incapacitating Injury Crashes
- 40 C - Possible Injury Crashes
- 185 O - Property Damage Only/No Injury Crashes

### Office of Highway Safety Planning

333 South Grand Avenue  
P.O. Box 30634  
Lansing, Michigan 48909  
Phone: (517) 241-2500  
Fax: (517) 241-2501

Find us on the web:  
[MichiganTrafficCrashFacts.org](http://MichiganTrafficCrashFacts.org)

