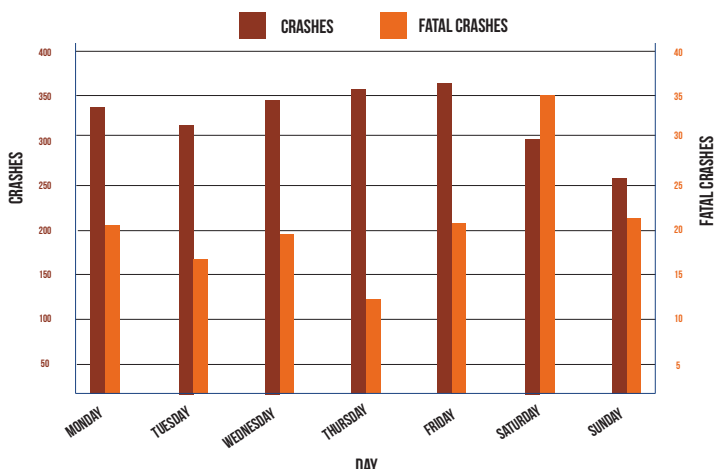


# 2014

*Pedestrians are defined as a person on foot, skis, skates, rollerblades, or a non-motorized wheelchair, or the rider of a horse or a horse and buggy. Each pedestrian is listed as a separate unit on the Traffic Crash Report.*

### PEDESTRIAN-INVOLVED CRASHES BY DAY OF THE WEEK



### PEDESTRIAN INJURY SEVERITY IN CRASHES



	KILLED: 148 (7.0%)
	INCAPACITATING INJURIES: 365 (17.3%)
	NON-INCAPACITATING INJURIES: 656 (31.1%)
	POSSIBLE INJURIES: 941 (44.6%)

There were 2,406 pedestrians involved in 2,280 motor vehicle crashes.

Of the 2,406 pedestrians involved in crashes, 148 (6.2%) were killed and 1,962 (81.5%) were injured.

There were 101 (68.2%) male pedestrians killed and 47 (31.8%) female pedestrians killed.

Of all pedestrian actions prior to a crash, "crossing not at an intersection" is the most deadly, accounting for 36 (24.3%) of the pedestrian fatalities.

For each pedestrian killed, there were about 13 pedestrians injured.

The highest number of pedestrian-involved crashes occurred during October, with 265 (11.6%).

The time of day with the most pedestrian-involved crashes occurred from 6:00-6:59 PM, with 185 (8.1%).

Saturday was the deadliest day for pedestrians with 35 (23.6%) pedestrian-involved fatal crashes and 35 (23.5%) fatalities.

Of the 148 pedestrians killed, 44 (29.7%) of the deaths were the result of an alcohol-involved crash and 35 (79.5%) of those pedestrians had been drinking.