

MTCF

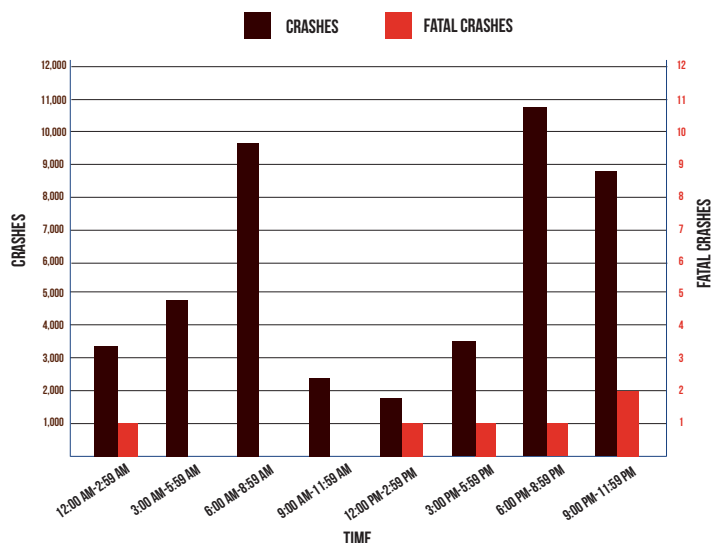
Michigan Traffic Crash Facts

DEER

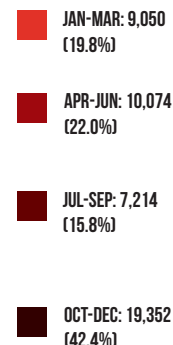
2014

Deer crashes include situations where a deer is a contributing factor, but does not necessarily come in contact with a traffic unit.

MOTOR VEHICLE-DEER CRASHES BY TIME OF DAY



MOTOR VEHICLE-DEER CRASHES BY TIME OF YEAR



Michigan had 45,690 (15.3% of the total crashes) motor vehicle-deer crashes.

Passenger cars and station wagons represented 76.1 percent (34,791) of the vehicles involved.

As a result of vehicle-deer crashes, 1,072 people were injured and 6 people were killed. All (100.0%) of those killed were motorcyclists.

Motor vehicle-deer involved crashes were highest during the 6:00-8:59 PM time period (10,857).

The top 10 counties experiencing vehicle-deer crashes were: Oakland 1,750; Kent 1,338; Jackson 1,279; Lapeer 1,153; Eaton 1,077; Sanilac 1,053; Clinton 1,015; Montcalm 968; Genesee 964; and Washtenaw 952.

The highest number of vehicle-deer crashes occurred during November (7,850).

Of the motor vehicle-deer crashes, 19,352 (42.4%) occurred during the fourth quarter of the year.

Michigan Department of State Police
Criminal Justice Information Center - Traffic Crash Reporting (517) 241-1699
Office of Highway Safety Planning - Traffic Safety Programs (517) 241-1505
WWW.MICHIGAN.GOV/OHSP

