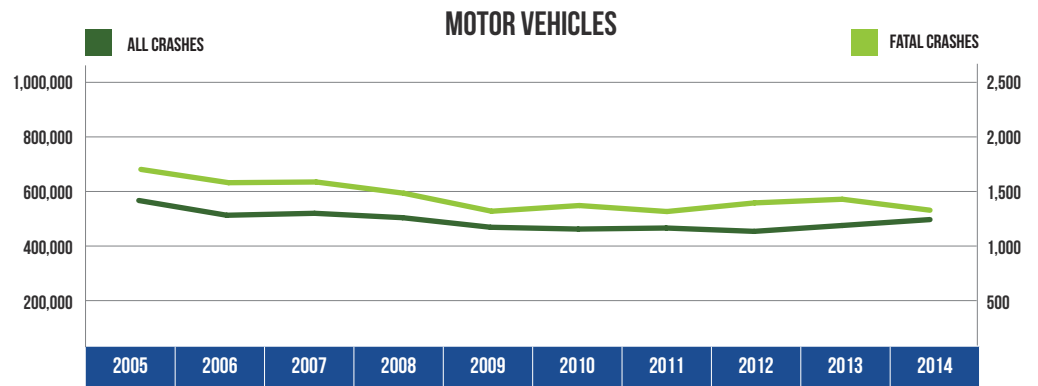


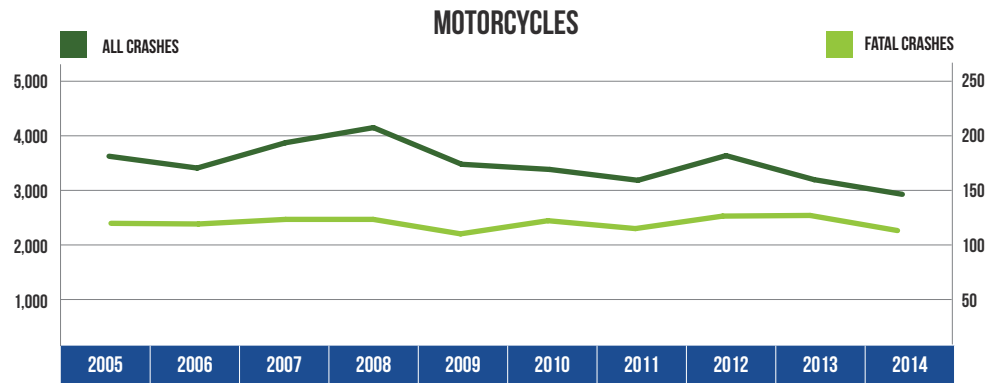
10 YEAR TRENDS-STATEWIDE (CONTINUED)

MOTOR VEHICLES		
Year	All Crashes	Fatal Crashes
2005	592,671	1,682
2006	528,763	1,551
2007	537,228	1,558
2008	518,240	1,447
2009	476,801	1,270
2010	468,968	1,326
2011	473,501	1,267
2012	459,030	1,352
2013	484,446	1,388
2014	510,086	1,280



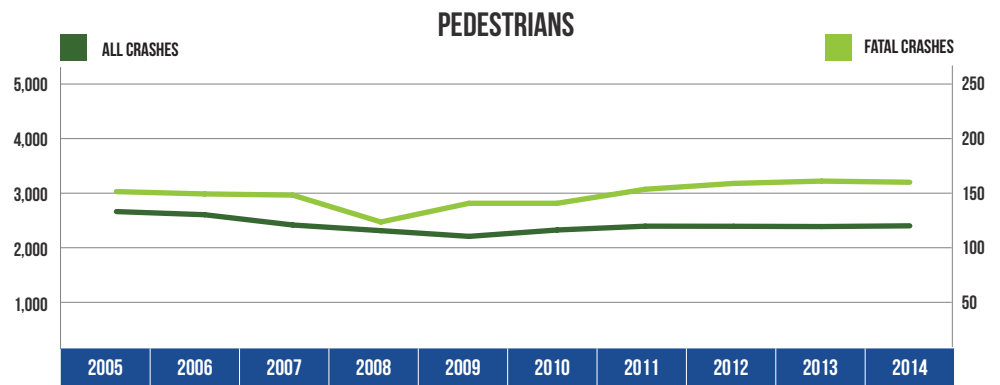
There were 510,086 motor vehicles involved in all crashes in 2014, down 13.9 percent from 2005. There were 1,280 motor vehicles involved in fatal crashes in 2014, down 23.9 percent from 2005.

MOTORCYCLES		
Year	All Crashes	Fatal Crashes
2005	3,589	121
2006	3,386	120
2007	3,821	127
2008	4,082	127
2009	3,451	105
2010	3,362	125
2011	3,175	113
2012	3,600	132
2013	3,186	133
2014	2,934	110



There were 2,934 motorcycles involved in crashes in 2014, a 18.3 percent decrease from 2005. There were 110 motorcycles involved in fatal crashes in 2014, down 9.1 percent from 2005.

PEDESTRIANS		
Year	All Crashes	Fatal Crashes
2005	2,683	150
2006	2,622	148
2007	2,422	147
2008	2,312	124
2009	2,201	140
2010	2,325	140
2011	2,399	152
2012	2,397	157
2013	2,392	159
2014	2,406	158



There were 2,406 pedestrians involved in crashes in 2014, down 10.3 percent from 2005. There were 158 pedestrians involved in fatal crashes in 2014, up 5.3 percent from 2005.