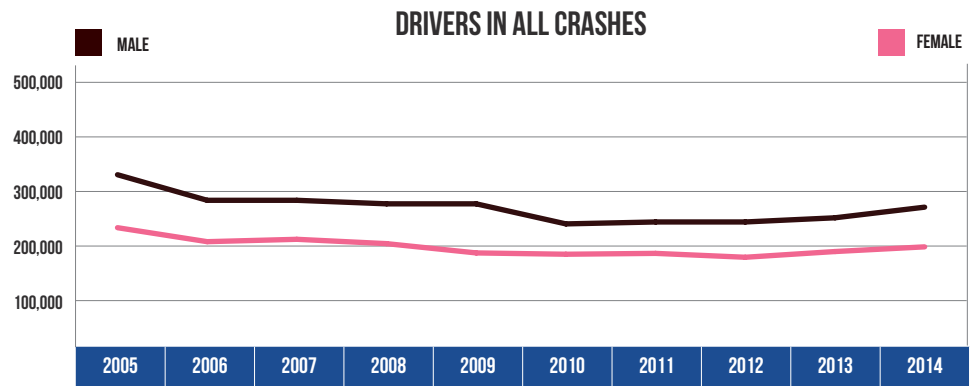


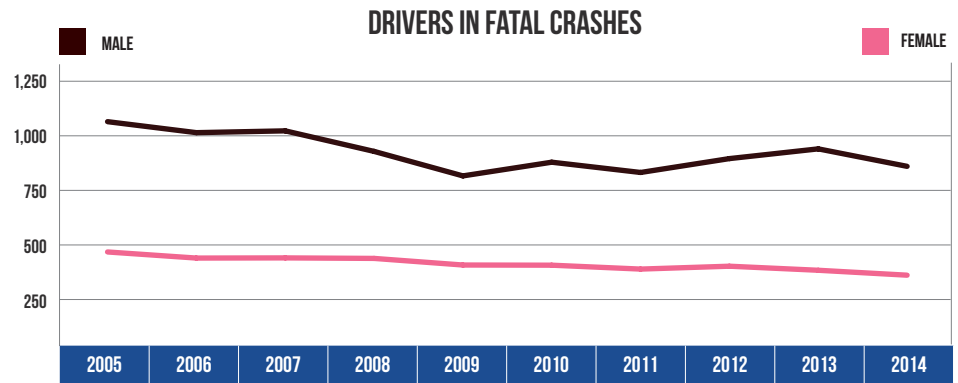
## 10 YEAR TRENDS-STATEWIDE (CONTINUED)

DRIVERS IN ALL CRASHES		
Year	Male	Female
2005	309,487	237,343
2006	272,328	216,196
2007	277,353	219,781
2008	267,186	213,223
2009	242,490	199,166
2010	238,048	197,183
2011	240,850	198,488
2012	232,475	192,605
2013	246,908	201,264
2014	262,359	208,359



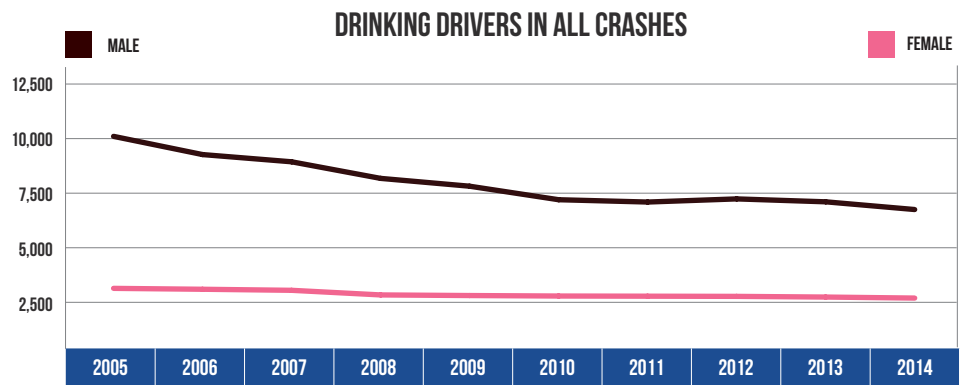
Male drivers accounted for 55.7 percent of all drivers in crashes during 2014, which was down from 56.6 percent in 2005. Female drivers accounted for 44.3 percent of all drivers in crashes during 2014, which was up from 43.4 percent in 2005.

DRIVERS IN FATAL CRASHES		
Year	Male	Female
2005	1,141	452
2006	1,080	416
2007	1,090	417
2008	976	414
2009	840	375
2010	916	374
2011	859	351
2012	936	368
2013	990	344
2014	893	315



Male drivers made up 73.9 percent of all drivers in fatal crashes in 2014, which was up from 71.6 percent in 2005. Female drivers made up 26.1 percent of all drivers in fatal crashes in 2014, which was down from 28.4 percent in 2005.

DRINKING DRIVERS IN ALL CRASHES		
Year	Male	Female
2005	10,359	3,045
2006	9,454	2,991
2007	9,095	2,928
2008	8,270	2,650
2009	7,881	2,613
2010	7,209	2,584
2011	7,094	2,574
2012	7,250	2,563
2013	7,105	2,522
2014	6,721	2,461



In 2014, males represented 73.2 percent of all drinking drivers, which was down from 77.3 percent in 2005. Females represented 26.8 percent of all drinking drivers in 2014, which was up from 22.7 percent in 2005.