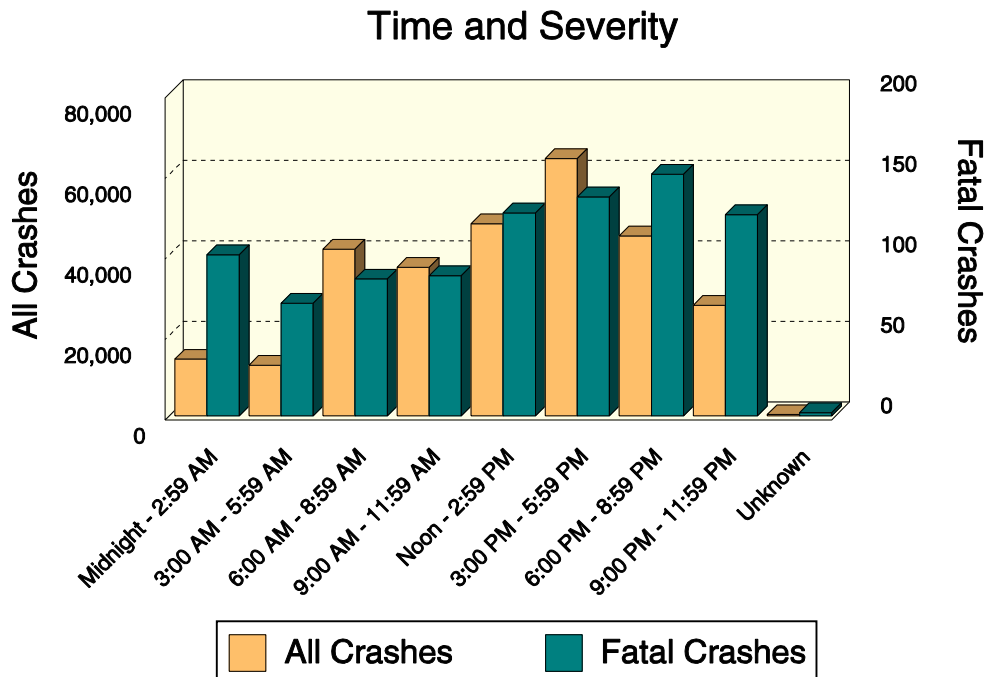


TIME AND SEVERITY

TIME OF DAY	All Crashes		Fatal Crashes		Injury Crashes			PDO Crashes
	Number	% of Total	Number	% of Fatal	A	B	C	
Midnight - 2:59 AM	14,087	4.9	100	11.4	329	850	1,467	11,341
3:00 AM - 5:59 AM	12,594	4.4	70	7.9	194	566	1,071	10,693
6:00 AM - 8:59 AM	41,383	14.3	85	9.6	413	1,361	4,264	35,260
9:00 AM - 11:59 AM	36,880	12.8	87	9.9	486	1,699	4,692	29,916
Noon - 2:59 PM	47,720	16.5	126	14.3	791	2,476	6,715	37,612
3:00 PM - 5:59 PM	63,892	22.1	136	15.4	929	3,017	8,844	50,966
6:00 PM - 8:59 PM	44,719	15.5	150	17.0	655	1,949	4,757	37,208
9:00 PM - 11:59 PM	27,473	9.5	125	14.2	510	1,234	2,651	22,953
Unknown	313	0.1	2	0.2	4	11	14	282
Total	289,061	100.0	881	100.0	4,311	13,163	34,475	236,231



Crash frequencies peak in the late afternoon, then drop off steadily until 5:59 AM (the morning rush hour). Fatal crash frequencies rise with the frequency of other crashes, but continue at a high rate well into the early morning hours. There are proportionally more fatal crashes during the midnight to 2:59 AM time period.