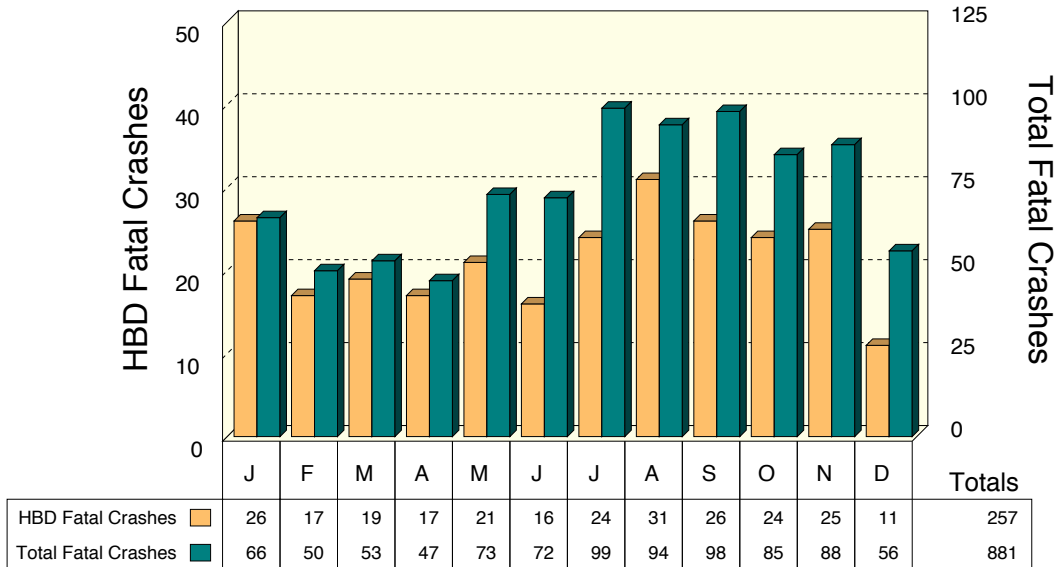


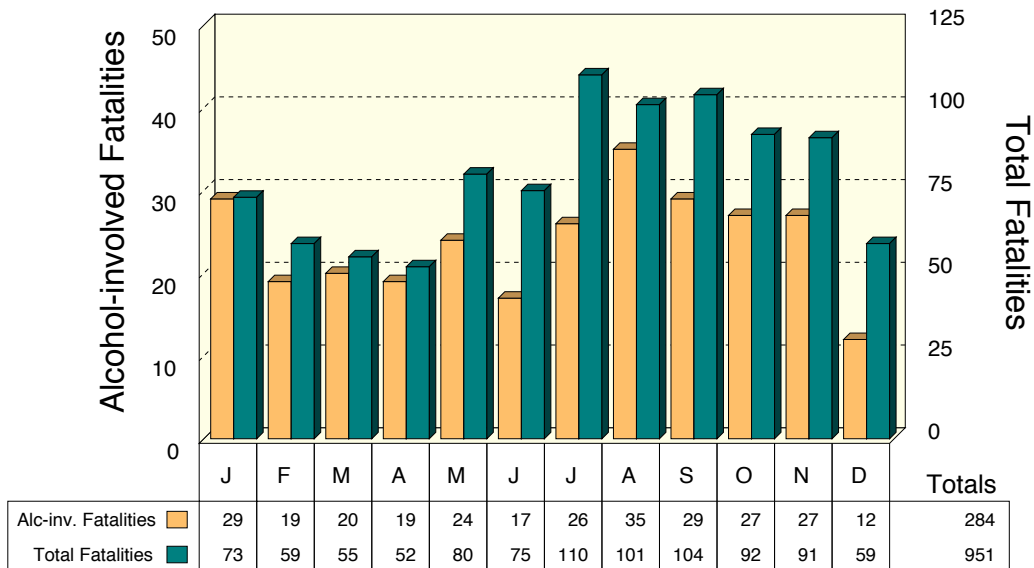
ALCOHOL INVOLVEMENT IN FATAL CRASHES

Fatal crashes (total of non-HBD and HBD fatal crashes) were lowest in April. HBD fatal crashes were highest in number during the month of August. The number of total fatal crashes reached highest levels in July.

HBD Fatal Crashes by Month

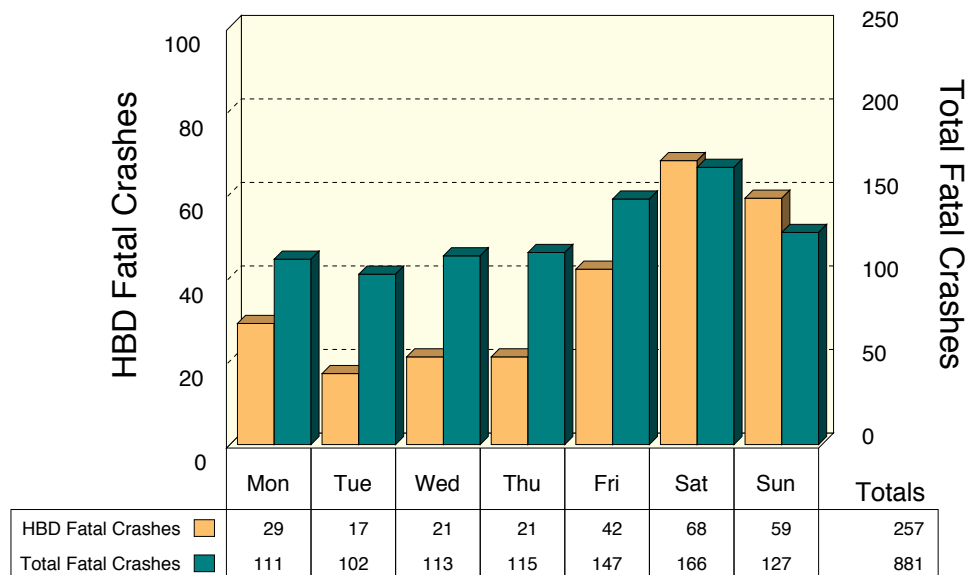


Alcohol-involved Fatalities by Month



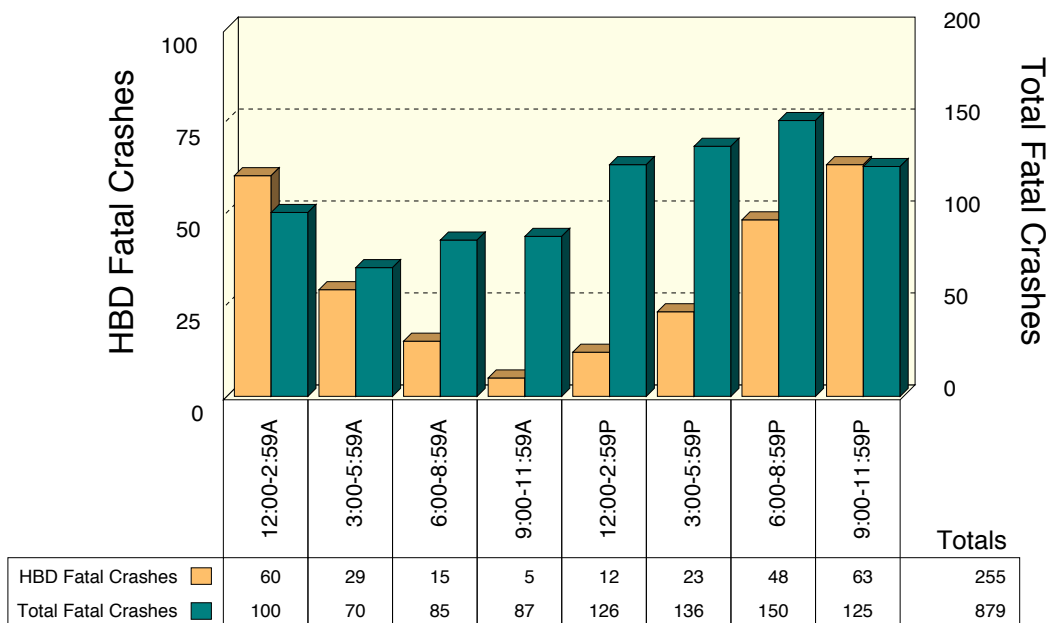
Note: An alcohol-involved fatality is any person killed in an HBD crash.

HBD Fatal Crashes by Day of Week



Friday and Saturday had the most fatal crashes while Saturday and Sunday had the highest proportions of drinking-related fatal crashes in 2013. On Sunday, 46.5 percent of the fatal crashes involved drinking, while only 16.7 percent of the fatal crashes on Tuesday involved drinking.

HBD Fatal Crashes by Time of Day



Not surprisingly, the 12:00 AM to 2:59 AM time period had the highest rate of drinking involvement (60.0%), while the 9:00 AM to 11:59 AM time period had the lowest (5.7%).

Note: This chart excludes two HBD fatal crashes where time of day was unknown.