

# MTCF

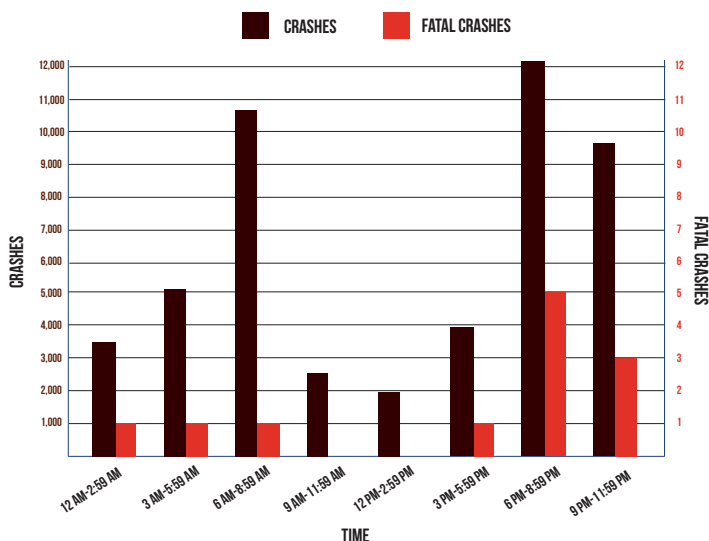
## Michigan Traffic Crash Facts

# DEER

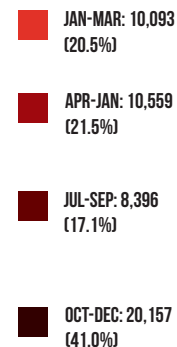
# 2013

*Deer crashes include situations where a deer is a contributing factor, but does not necessarily come in contact with a traffic unit.*

### MOTOR VEHICLE-DEER CRASHES BY TIME OF DAY



### MOTOR VEHICLE-DEER CRASHES BY TIME OF YEAR



Michigan had 49,205 (17.0% of the total crashes) motor vehicle-deer crashes.

Passenger cars represented 75.9 percent (37,485) of the vehicles involved.

As a result of vehicle-deer crashes, 1,212 people were injured and 12 people were killed. Seven (58.3%) of those killed were motorcyclists.

Motor vehicle-deer involved crashes peaked during the 6:00-8:59 PM time period (12,073). Fatal deer crashes also peaked during the 6:00-8:59 PM time period (5).

The top 10 counties experiencing vehicle-deer crashes were: Oakland 1,801; Jackson 1,480; Kent 1,447; Lapeer 1,229; Eaton 1,076; Montcalm 1,073; Sanilac 1,071; Calhoun 1,059; Washtenaw 1,058; and Clinton 1,056.

The highest number of vehicle-deer crashes occurred during November (8,933).

Of the motor vehicle-deer crashes, 20,157 (41.0%) occurred during the fourth quarter of the year.

Michigan Department of State Police  
Criminal Justice Information Center - Traffic Crash Reporting (517) 241-1699  
Office of Highway Safety Planning - Traffic Safety Programs (517) 241-1505  
WWW.MICHIGAN.GOV/OHSP

