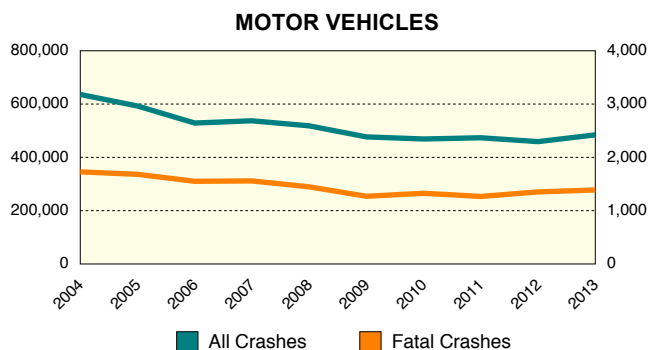


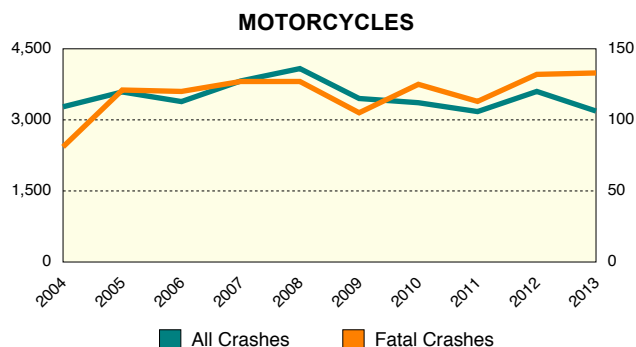
# 10 YEAR TRENDS (continued)

MOTOR VEHICLES		
	All Crashes	Fatal Crashes
2004	635,913	1,728
2005	592,671	1,682
2006	528,763	1,551
2007	537,228	1,558
2008	518,240	1,447
2009	476,801	1,270
2010	468,968	1,326
2011	473,501	1,267
2012	459,030	1,352
2013	484,446	1,388



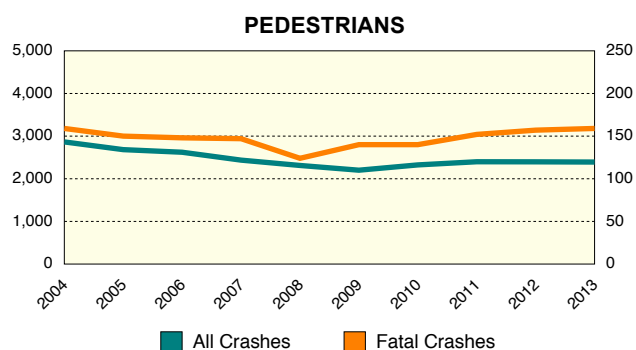
There were 484,446 motor vehicles involved in all crashes in 2013, down 23.8 percent from 2004. There were 1,388 motor vehicles involved in fatal crashes in 2013, down 19.7 percent from 2004.

MOTORCYCLES		
	All Crashes	Fatal Crashes
2004	3,276	81
2005	3,589	121
2006	3,386	120
2007	3,821	127
2008	4,082	127
2009	3,451	105
2010	3,362	125
2011	3,175	113
2012	3,600	132
2013	3,186	133



There were 3,186 motorcycles involved in crashes in 2013, a 2.7 percent decrease from 2004. There were 133 motorcycles involved in fatal crashes in 2013, up 64.2 percent from 2004.

PEDESTRIANS		
	All Crashes	Fatal Crashes
2004	2,864	159
2005	2,683	150
2006	2,622	148
2007	2,437	147
2008	2,312	124
2009	2,201	140
2010	2,325	140
2011	2,399	152
2012	2,397	157
2013	2,392	159



There were 2,392 pedestrians involved in crashes in 2013, down 16.5 percent from 2004. There were 159 pedestrians involved in fatal crashes in both 2004 and 2013.