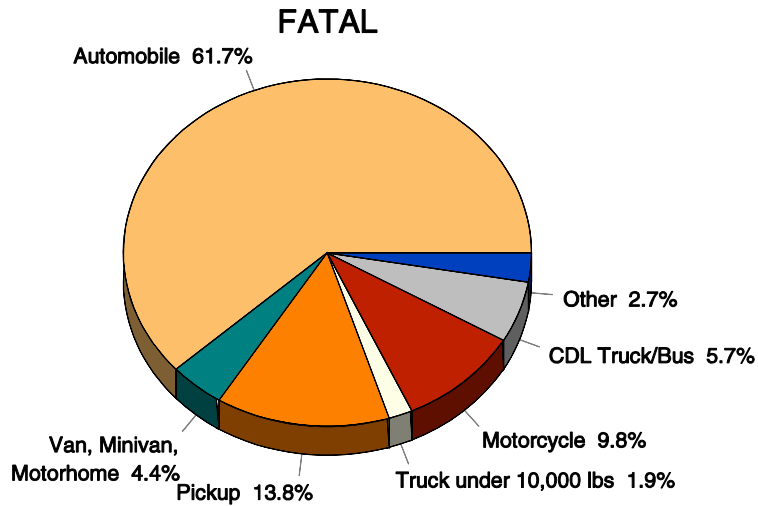
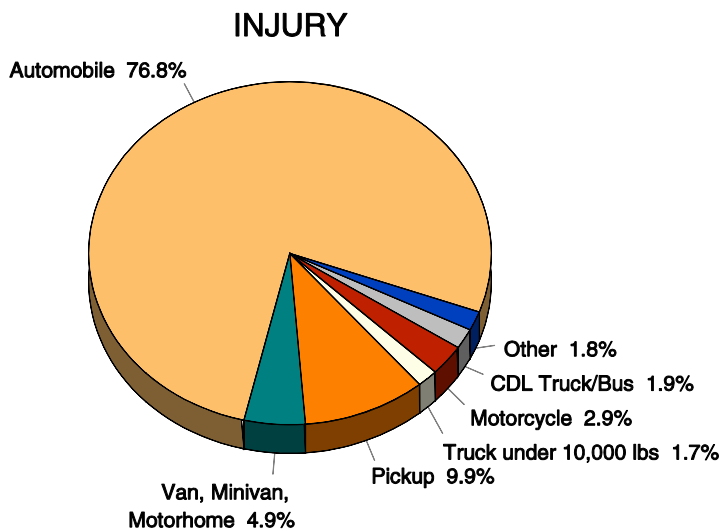


VEHICLE TYPES IN CRASHES BY CRASH SEVERITY



The top chart shows that 75.5 percent of vehicles involved in fatal crashes are automobiles or pickups. Van/minivan/motorhome has a fatal crash involvement of 4.4 percent. Motorcycles have a fatal crash involvement of 9.8 percent.



Special Note:
"Other" consists of
moped, go-cart,
snowmobile,
off-road vehicle,
other, and unknown.

As with fatal crashes, injury and property damage only (PDO) crashes are represented primarily by automobiles and pickups.

