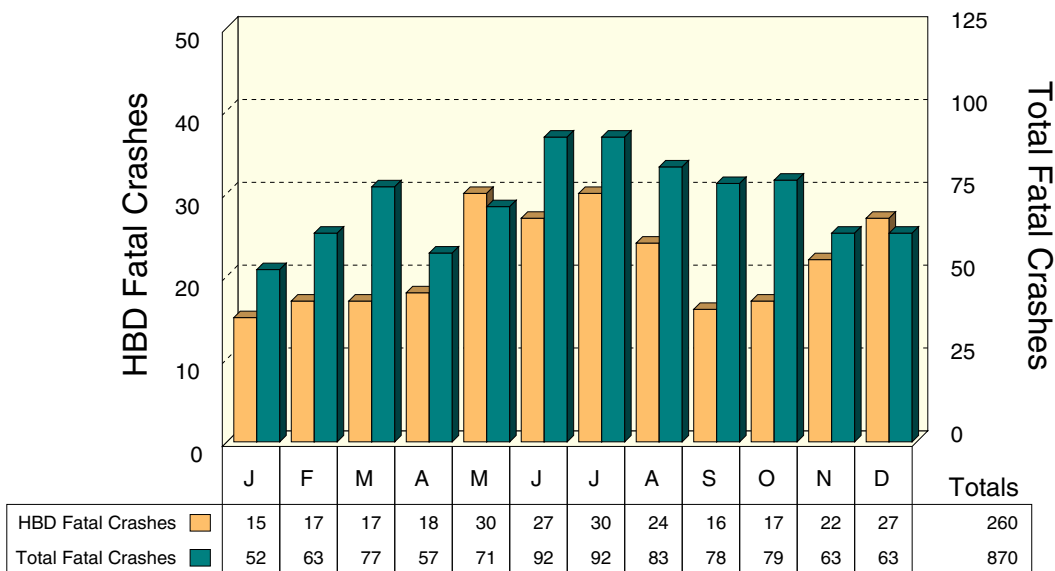


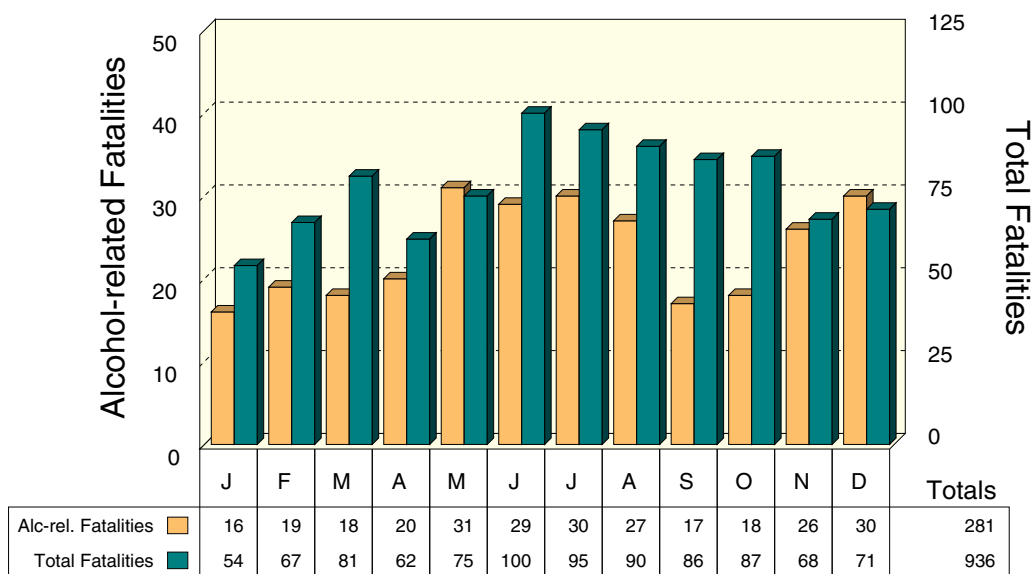
ALCOHOL INVOLVEMENT IN FATAL CRASHES

Fatal crashes (total of non-HBD and HBD fatal crashes) were lowest in January. HBD fatal crashes were highest in number during the months of May and July. The number of total fatal crashes reached highest levels in June and July.

HBD Fatal Crashes by Month

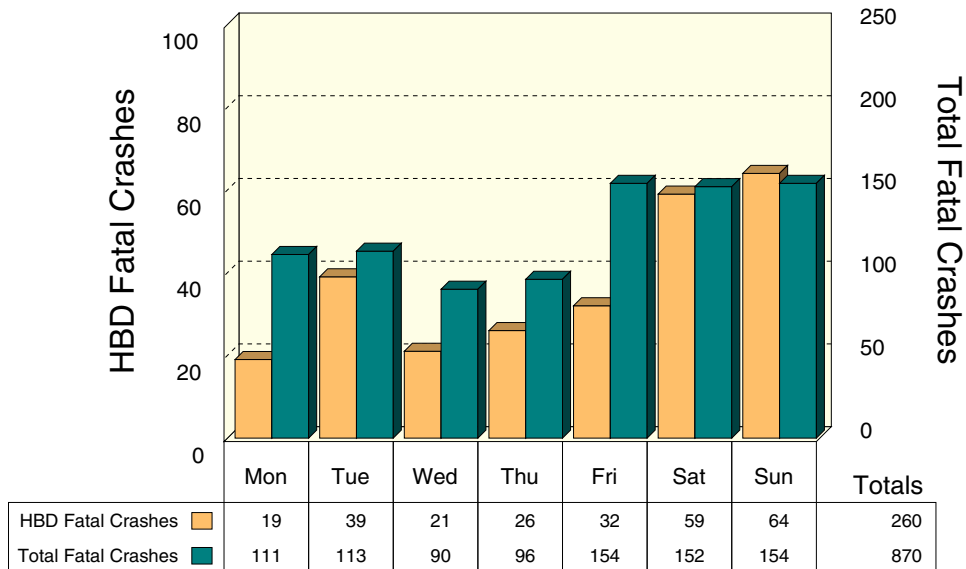


Alcohol-related Fatalities by Month



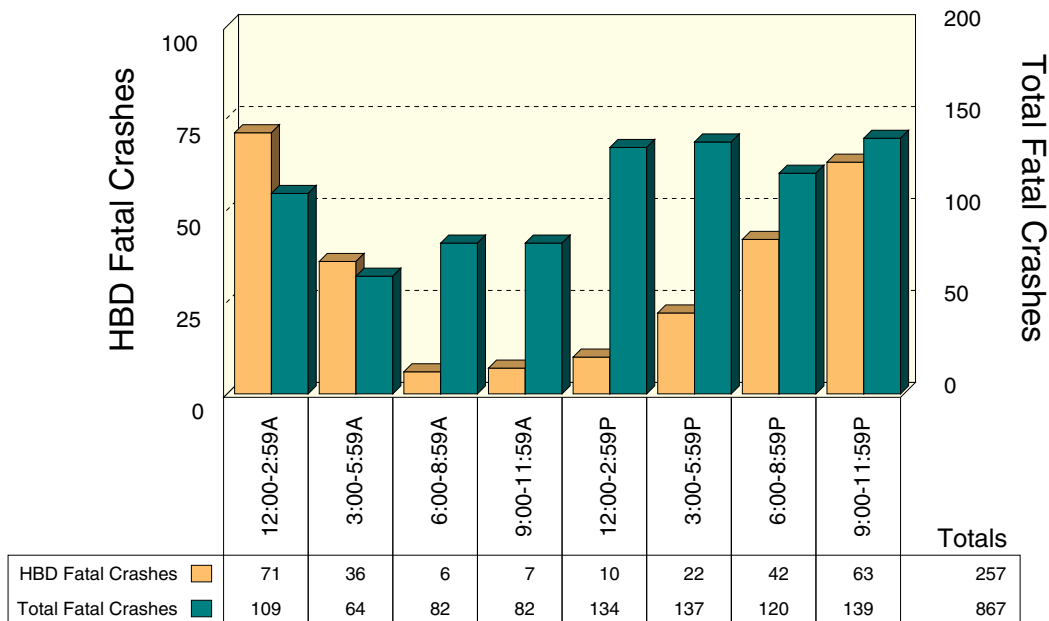
Note: An alcohol-related fatality is any person killed in an HBD crash.

HBD Fatal Crashes by Day of Week



Friday and Sunday had the most fatal crashes while Saturday and Sunday had the highest proportions of drinking-related fatal crashes in 2012. 41.6 percent of the fatal crashes on Sunday involved drinking, while only 17.1 percent of the fatal crashes on Monday involved drinking.

HBD Fatal Crashes by Time of Day



Not surprisingly, the 12:00 AM to 2:59 AM time period had the highest rate of drinking involvement (65.1%), while the 6:00 AM to 8:59 AM time period had the lowest (7.3%).

Note: This chart excludes three HBD fatal crashes where time of day was unknown.