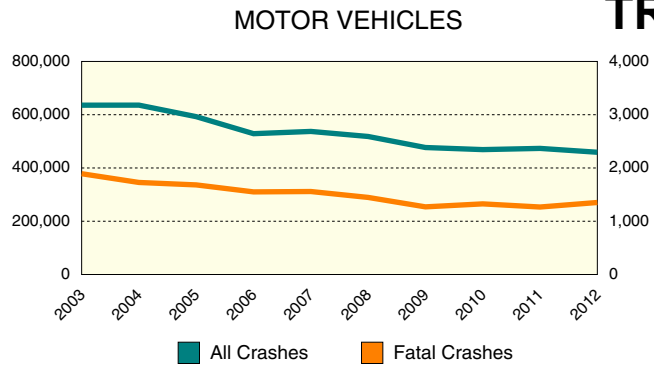


# 10

## YEAR

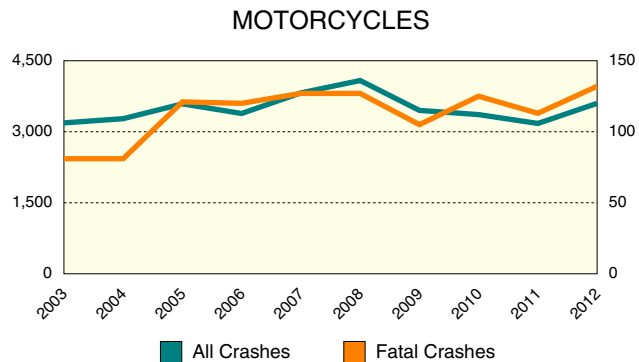
## TRENDS

MOTOR VEHICLES		
	All Crashes	Fatal Crashes
2003	635,767	1,892
2004	635,913	1,728
2005	592,671	1,682
2006	528,763	1,551
2007	537,228	1,558
2008	518,240	1,447
2009	476,801	1,270
2010	468,968	1,326
2011	473,501	1,267
2012	459,030	1,352



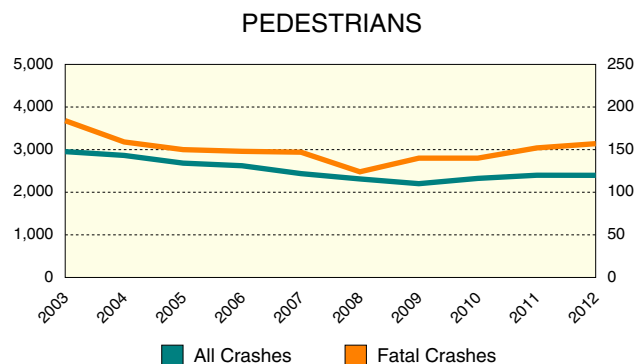
There were 1,352 motor vehicles involved in fatal crashes in 2012, down 28.5 percent from 2003. There has been a 27.8 percent decrease in all crashes.

MOTORCYCLES		
	All Crashes	Fatal Crashes
2003	3,187	81
2004	3,276	81
2005	3,589	121
2006	3,386	120
2007	3,821	127
2008	4,082	127
2009	3,451	105
2010	3,362	125
2011	3,175	113
2012	3,600	132



The number of motorcycles involved in fatal crashes has increased 63.0 percent during the 10-year period. There has been a 13.0 percent increase in all crashes involving motorcycles.

PEDESTRIANS		
	All Crashes	Fatal Crashes
2003	2,953	184
2004	2,864	159
2005	2,683	150
2006	2,622	148
2007	2,437	147
2008	2,312	124
2009	2,201	140
2010	2,325	140
2011	2,399	152
2012	2,397	157



There were 157 pedestrians involved in fatal crashes in 2012, down 14.7 percent from 2003. There has been a 18.8 percent decrease in pedestrians involved in all crashes.