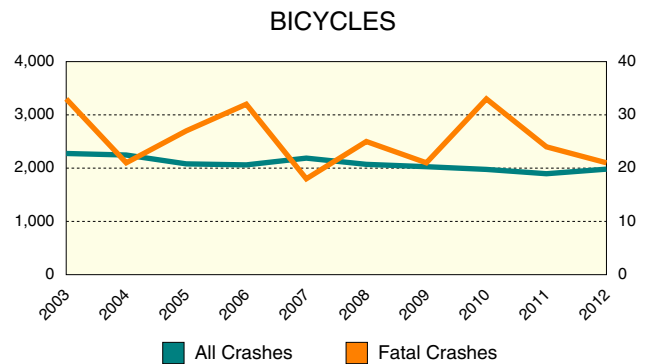


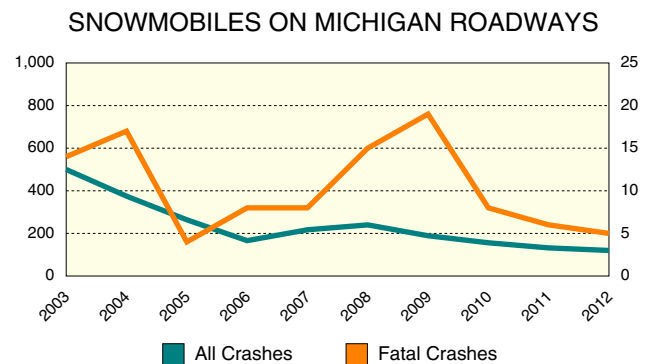
## 10 YEAR TRENDS (continued)

BICYCLES		
	All Crashes	Fatal Crashes
2003	2,275	33
2004	2,246	21
2005	2,080	27
2006	2,061	32
2007	2,188	18
2008	2,071	25
2009	2,027	21
2010	1,976	33
2011	1,895	24
2012	1,981	21



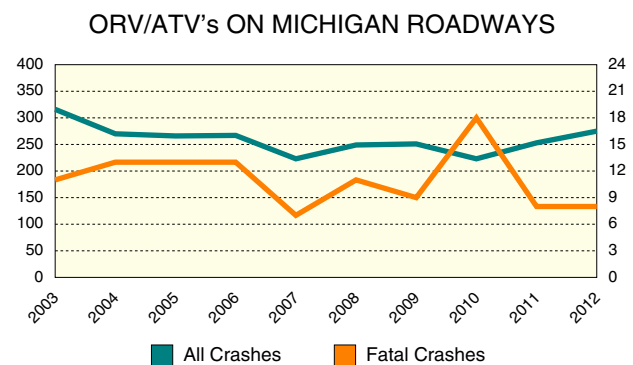
There were 21 bicycles involved in fatal crashes in 2012, down 36.4 percent from 2003. There was a 12.9 percent decrease in all bicycle-involved crashes in the 10-year period.

SNOWMOBILES ON MICHIGAN ROADWAYS		
	All Crashes	Fatal Crashes
2003	500	14
2004	375	17
2005	264	4
2006	166	8
2007	217	8
2008	240	15
2009	189	19
2010	156	8
2011	132	6
2012	120	5



Snowmobile crashes are down 76.0 percent from 2003. Fatal snowmobile crashes are down 64.3 percent from 2003.

ORV/ATV's ON MICHIGAN ROADWAYS		
	All Crashes	Fatal Crashes
2003	316	11
2004	270	13
2005	266	13
2006	267	13
2007	223	7
2008	249	11
2009	251	9
2010	223	18
2011	253	8
2012	275	8



The number of all ORV/ATV-involved crashes has decreased 13.0 percent over the 10-year period. The number of ORV/ATV-involved fatal crashes on Michigan public roadways has ranged between seven and 18 over the 10-year period.