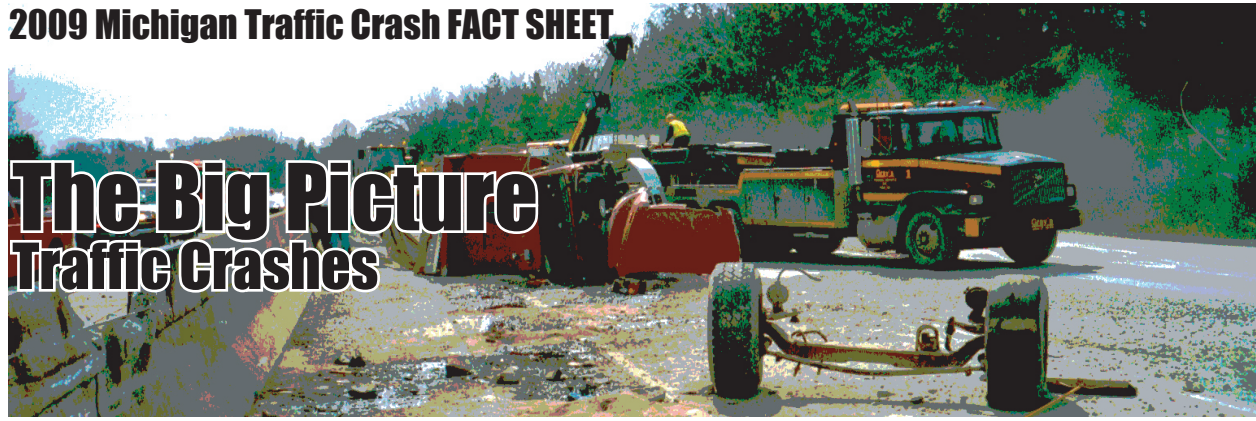


The Big Picture Traffic Crashes



Revised June 7, 2011

The driver, the roadway, and the motor vehicle contribute in some measure to every crash. A preponderance of evidence, however, points to driver error as a chief cause in the majority of crashes.

- There were 290,978 reported crashes, of which 806 were fatal, 52,283 were personal injury, and 237,889 were property damage only. Compared to 2008 this is a 7.9 percent decrease in total reported crashes, a 11.9 percent decrease in fatal crashes, a 5.9 percent decrease in personal injury crashes, and a 8.4 percent decrease in property damage crashes.
- 871 persons were killed as a result of the 806 fatal crashes for an average of 1.1 deaths per fatal crash.
- One out of every 11,446 persons in Michigan was killed in a traffic crash; one out of every 141 persons was injured.
- A traffic crash was reported every 1 minute and 48 seconds.
- One person was killed every 10 hours and 3 minutes as a result of a traffic crash.
- One person was injured every 7 minutes and 25 seconds in a traffic crash.
- For each person killed, 81.4 persons were injured in crashes.
- 6,511 persons received A-injuries. An A-injury is incapacitating. It prevents normal activities and requires hospitalization.

The estimated economic loss due to traffic crashes was \$7.9 billion. If costs were spread across the state's population this would translate into a loss of \$791 per state resident.